



DIRECTED BY
**DANYA
TAYMOR**

**APRIL 14 —
MAY 23**

BY
**SARAH
GANCHER**

the
flea



THE FLEA THEATER

NIEGEL SMITH ARTISTIC DIRECTOR

CAROL OSTROW PRODUCING DIRECTOR

PRESENTS THE WORLD PREMIERE OF

THE PLACE WE BUILT

WRITTEN BY **SARAH GANCHER**

DIRECTED BY **DANYA TAYMOR**

FEATURING **THE BATS**

**BRITTANY K. ALLEN, LYDIAN BLOSSOM, TOM COSTELLO, BRENDAN DALTON,
TAMARA DEL ROSSO, PHILIP FELDMAN, KRISTIN FRIEDLANDER, CLEO GRAY,
RACHEL INGRAM, BEN LORENZ, ASH MCNAIR, SONIA MENA, ISABELLE PIERRE,
XAVIER REMINICK, LETA RENÉE-ALAN, TESSA HOPE SLOVIS**

THE BENGSONS ARRANGEMENTS/MUSIC CONSULTANTS

ARNULFO MALDONADO & FELI LAMENCA SCENIC DESIGN

MASHA TSIMRING LIGHTING DESIGN **CLAUDIA BROWN** COSTUME DESIGN

BEN TRUPPIN-BROWN SOUND DESIGN **MARTE JOHANNE EKHOUGEN** PUPPET DESIGN

ZACH SERAFIN PROPS MASTER **ALEX J. GOULD** FIGHT CHOREOGRAPHY

JOCELYN CLARKE DRAMATURG **CHARISE GREENE** VOICE/DIALECT COACH

BECKY HEISLER ASSOCIATE LIGHTING DESIGN **IZZY FIELDS** COSTUME ASSISTANT

JAKE BECKHARD ASSISTANT DIRECTOR

TZIPORA REMAN STAGE MANAGER **KAILA HILL** ASSISTANT STAGE MANAGER

BRADLEY MEAD/WIIDE GRAPHIC DESIGNER

RON LASKO/SPIN CYCLE PRESS REPRESENTATIVE

CAST

Aniko	Leta Renée-Alan
Julia	Cleo Gray
Kata	Kristin Friedlander
Szuszanna.....	Lydian Blossom
Aisha.....	Isabelle Pierre
Ilona.....	Tamara Del Rosso
Female Utility.....	Brittany K. Allen
Ben.....	Tom Costello
Zoltan.....	Ash McNair
Mihaly	Brendan Dalton
Male Utility.....	Xavier Reminick
Mária (u/s Kata, Ilona, Szuszanna).....	Sonia Mena
Lacko (u/s Mihaly).....	Ben Lorenz
Kristián (u/s Ben, Male Utility).....	Phil Feldman
Szilvia (u/s Aisha).....	Rachel Ingram
Csilla (u/s Aniko, Julia).....	Tessa Hope Slovis

SPECIAL THANKS:

Kyle Chepulis, Soho Rep, Materials for the Arts,
 New York Theatre Workshop, Souths, Petrarca, Access Theater,
 10 Thousand Steps Bookstore, Dave Bova Wig Design

This is the World Premiere for *The Place We Built*.
The Place We Built was a Clifford Odets Ensemble Play Commission.
The Place We Built was developed by
 the Jewish Plays Project & The Playwrights Realm
 (Katherine Kovner, Artistic Director, Roberta Pereira, Producing Director).

This program is supported, in part, by public funds from the
 New York City Department of Cultural Affairs in partnership with the city council.

CREATIVE TEAM

Playwright.....	Sarah Gancher
Director	Danya Taymor
Music Consultants & Arrangements.....	The Bengsons
Scenic Design.....	Arnulfo Maldonado & Feli Lamenca
Lighting Design.....	Masha Tsimring
Costume Design	Claudia Brown
Sound Design	Ben Truppin-Brown
Puppet Design.....	Marte Johanne Ekhougen
Fight Choreographer	Alex J. Gould
Props Master	Zach Serafin
Associate Lighting Design.....	Becky Heisler
Costume Assistant.....	Izzy Fields
Assistant Director	Jake Bekhard
Dramaturg.....	Jocelyn Clarke
Dialect Coach.....	Charise Greene
Stage Manager.....	Tzipora Reman
Assistant Stage Manager	Kaila Hill

FLEA STAFF

Artistic Director	Niegel Smith
Producing Director	Carol Ostrow
General Manager.....	Joshua Cohen
Capital Project Manager	Tim Catlett
Artistic Associate	Erin Daley
Marketing Associate.....	Olivia Lloyd
Audience Development Associate.....	Kayla Sklar
Development Associate	Charlie Madison
Technical Director	Ali Akbarian
Assistant Technical Director.....	Jen Medina-Gray
Costume Manager	Grace Interlichia
Key Art Design	Bradley Mead/WIIDE
Videographer.....	Scott Fetterman & Crystal Arnette
Photographer.....	Hunter Canning
Accountant.....	Joel Faden & Company, Inc.
Attorney.....	Carol M. Kaplan/Loeb and Loeb
Development Consultant.....	Rachel Colbert
Theater, Technical & Production Consultant.....	Kyle Chepulis
Press Representative	Ron Lasko/Spin Cycle

THE COMPANY



BRITTANY K. ALLEN (Female Utility) Brittany K. Allen is an actress, writer, and library goblin. Recent New York credits include *Let's Play Play* (The Brick), *Minor Character* (Invisible Dog/New Saloon) and *Ambition: The Musical* (Dixon Place). Though, Britt can often be found mugging in basements with her long-form improv team, Big Hot Mess. B's essays and fiction are published or forthcoming in The Toast, The Tishman Review (Pushcart Prize Nominee), Mercer Street, and other places. She's a proud member of Youngblood, the emerging playwrights collective at the Ensemble Studio Theatre. XO my great cast and crew! BFA: NYU/Tisch



LYDIAN BLOSSOM, (Szuszanna) has been a Bat for over three years and is thrilled to be making her Upstairs debut! Stage credits include: *Women* by Chiara Atik (The PIT and Hollywood Fringe, Original Cast), *Camp Kappawanna*, (Atlantic), *True Bible Tales* (by Robert Askins, 14th St Y), *Helping People*, (IRT), *The Flying Latke*, (The Flea,) *Stop the Virgens* (St. Anns Warehouse), Calliope Theatre Company's *Eye Made Quiet*, *Six Windows Presents a Hero of Our Time*, and many many cycles of *Serials@TheFlea*. She has acted in workshops and readings with ColtCoeur, The Vineyard Theater, Soho Rep Writer/Director Lab, and Studio 42. She also played Becca in a workshop of Jenny Schwartz and Todd Almond's musical *Iowa* here at The Flea Theater. Graduate of Sarah Lawrence College and The British American Drama Academy.



TOM COSTELLO (Ben) This is Tom's first time acting in a Flea production. A Resident Director since 2011, he has directed *Smoke* by Kim Davies; *The Wundelsteipen (and other difficult roles for young people)* by Nick Jones; *The Flying Latke* (co-director, 2011); *The Shakes -- The Honest Whore* and *Romeo and Juliet*; *#serials@theflea -- Lucifer ex Machina* by Sevan K. Greene, *Undesirables* by Jeff Ronan. Elsewhere, he has directed Libra Theater Company's *The Thirteenth Commandment* by Joshua H. Cohen; Pipeline Theatre Company's productions of *Sleepless City* by Tim Chawaga, *Shakespeare the Dead* by Alex Mills and *Bubble and Squeak* by Evan Twohy which was a finalist in the Samuel French Off-Off Broadway Festival. He has also directed numerous productions for Atlantic Acting School where he is a member of the faculty. BFA: NYU/Tisch



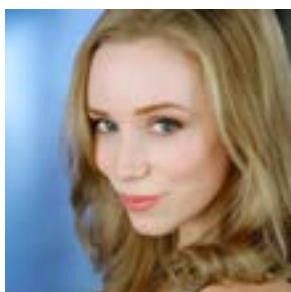
BRENDAN DALTON (Mihaly) Brendan is very excited to be making his Flea debut with this truly wonderful team of artists. Off-Broadway: *Blue Man Group* (NYC/Orlando/Chicago). Regional: *Dutch Masters*, *Failure: A Love Story* (Azuka Theatre), and *Timon of Athens* (Philadelphia Artists' Collective). BFA Theater Arts: The University of the Arts. www.brendan-dalton.com



TAMARA DEL ROSSO (Ilona) Tamara has performed and participated in the development of new work through The Ice Factory at The New Ohio Theatre, INTAR Theatre, SPACE at Ryder Farm, The Samuel French OOB Short Play Festival, with the Woodshed Collective, and as part of the 2013 Actors Theater of Louisville Apprenticeship Company. Regional credits include: *Sleep Rock Thy Brain* (Part of the 37th Annual Humana Festival), *Christmas Carol* and *Romeo and Juliet* (ATL). Education: B.A. Brown University.



PHIL FELDMAN (Kristián) is extremely excited to be making his Flea debut. It has been a true pleasure to have worked with such a talented community of Artists. Regional: *Fiddler on the Roof* (Priscilla Beach Theatre), *The Diary of Anne Frank* (Pittsburgh Playhouse). B.A. Theatre Arts: Point Park University. Many thanks to Danya, Sarah, the cast, crew, my family and friends.



KRISTIN FRIEDLANDER (Kata) Also currently in *Wolf in the River* at The Flea. Recently seen as Lady Macbeth in *Drunk Shakespeare*. Other NYC/regional credits include Chicago Shakespeare, Chautauqua Theatre Company, Slant Theatre, Eclipse, Appletree and The New Harmony Project. BFA: University of Evansville.



CLEO GRAY (Julia) was a co-producer of the hit late night series #serials@theflea (2015-16). Cleo's credits at The Flea include a *cautionary tail* by christopher oscar peña, Thomas Bradshaw's *JOB* (both directed by Benjamin Kamine), and Qui Nguyen's *She Kills Monsters* (directed by Robert Ross Parker), as well as *These Seven Sicknesses* by Sean Graney and Amy Freed's *Restoration Comedy* (both Drama Desk nominations for dir. Ed Sylvanus Iskandar). Other New York credits include Ma-Yi Theatre Co's *Soldier X* by Rehana Lew Mirza, directed by Lucie Tiberghien; Ivy Theatre Co.'s *DONKEY PUNCH* by Micheline Auger (Soho Playhouse) directed by Audrey Alford, Youngblood's *Asking For Trouble* ('12, '13, '14, '15 @ The Ensemble Studio Theatre) www.cleogray.com IG: cleo16. Cleo is currently seeking representation.



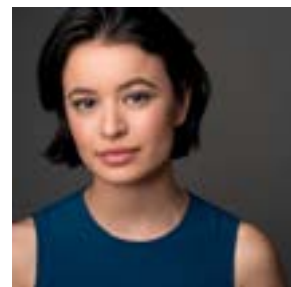
RACHEL INGRAM (Szilvia) Rachel is a brand new Bat and so excited to be making her debut with The Flea and this dreamy cast and crew! Recent/Favorite Credits: (Carol) *Oleanna*, (Beatrice) *Much Ado About Nothing*, and (Patricia) *Extremities*. She is a proud alumna of Syracuse University's BFA Acting program and Shakespeare's Globe (UK). You can read her uncomfortably candid thoughts at thespinaria.com.



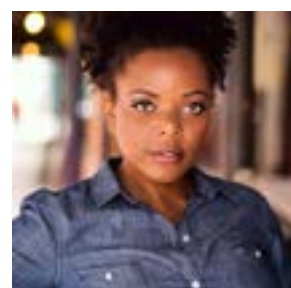
BEN LORENZ (Lacko) is a new Bat, who has performed in NYC at Dixon Place, Ars Nova, and in a wooden spaceship. Favorite roles include: Katurian in *The Pillowman*, Graham in *Cleansed*, Alan in *Play it Again*, Sam, Marty (and later Anthony) in *The House of Yes*, Father in *Eurydice*, and Haimon in *Antigonick*. He studied literature at Harvard, has trained at the Atlantic, and is returning from a year teaching Shakespeare to the Brits at Eton College.



ASH McNAIR (Zoltan) is making his Flea debut with this play and can't wait to share the journey with you. Love and thanks to our cast and crew - my desert island family, you are all absolute legends. Danya Taymor, you are our light and a total badass. Thanks for casting me, hopefully you don't regret that decision too much now. Thanks to Sarah Gancher for your story, these people and this experience. In the words of Brendan Dalton, "We're really doing it, guys." Welcome to the party. Kindness is magic. Cheers! Credits include "Entourage" (HBO), "The Protector" (ABC), "Difficult People" (Hulu) and *A Midsummer Night's Dream* (Gallery Players, Brooklyn). Training: The American Academy of Dramatic Arts, Los Angeles.



SONIA MENA (Mária) Sonia Mena is thrilled to be making her debut at The Flea Theater. Originally from California, she received her training at both Sarah Lawrence College and the British American Drama Academy. Favorite roles include Masha (Three Sisters), Veronica (Motherf***er with the Hat), Lady Macbeth, and Anna (Closer). She would like to thank everyone who worked on this show for their incredible faith and bravery in making this piece, and her friends, teachers, and family for their bottomless sass and support.



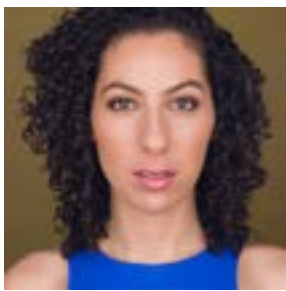
ISABELLE PIERRE (Aisha) NYC born, Isabelle Pierre is an actress, writer and a graduate of the Brooklyn College MFA Acting program. She was previously featured on the webseries' No Method and Finding Me: The Series. Recently on, NBC's *Shades of Blue* and Hulu's *The Path*.

Isabelle has performed off-off Broadway at the American Theatre of Actors, HERE Arts Center and The Flea Theatre.

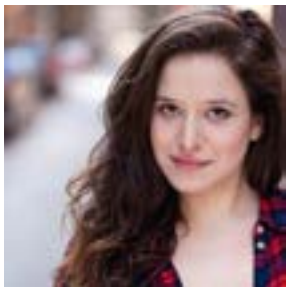
IsabellePierre.com



XAVIER REMINICK (Eurotrash/D) is atingle making his Flea debut in this Hungar-ican epic. NYC credits include the solo-show *(Mary)Todd* (Fresh Fruit Festival Best Actor award), *The Lost*, and productions at La MaMa, the Connelly, the Access, TheatreLab and T.J. Byrnes Bar. He's worked regionally with Great Lakes Theater and Cleveland Shakespeare Festival, and his hip-hop side piece Paan Beedi recently released their debut "Dirty Verses EP" on Soundcloud. Pace University, BFA. Love&Beijos to RAD, and all these sexy Bats who've metaphorically bitten the kid.



LETA RENÉE-ALAN (Aniko) Leta Renée-Alan is a native New Yorker. Some of her favorite roles that she's played include Grace in *Dreamland*, Farah in *Red Wednesday*, Joanna in *Home Free!*, and Betsy/Lindsey in *Clybourne Park*. She has performed around New York City in such venues as The Laguardia Performing Arts Center, The Brooklyn Lyceum, The Whitney Museum of American Art, and Dixon Place. She holds her MFA in Acting from Brooklyn College and a BA in Theater and Ethnic Studies from Brown University. When not on stage you can find Leta dancing, cooking, and traveling as much as possible.



TESSA HOPE-SLOVIS (Csilla) Tessa Hope Slovis is an EMC/ SAG-AFTRA actor and writer. Select TV: *The Affair*, *Law and Order: SVU*, *Breaking Bad*. Select Theater: *A Class Act* (Robert Moss Theater), *#LoveStory The Musical* (NYC Fringe), *The Who's Tommy* (Berkshire Theater Group). Tessa is also the co-creator of the recurring cabaret *Swipe Right Swipe Left* seen at The Duplex and 54 Below. She will be pursuing her MFA at USC's School of Dramatic Arts in the Fall of 2016. Thank you to the entire cast and crew of TPWB! TessaHopeSlovis.com

CREATIVE TEAM

SARAH GANCHER (Playwright) is a playwright who loves epic stories, big ideas, and deep comedy. Her most frequent subject is how history is reflected in individual lives—how places, communities, and debates evolve over time. Her plays have been produced or developed at London's National Theatre, Edinburgh's Traverse Theatre, Budapest's Quarter6Quarter7 Festival, Steppenwolf, PS122, Ars Nova, P73, New York Stage and Film, the Women's Project, NYC SummerStage, the Great

Plains Theater Conference, and Telluride Theatre, among others. She has been a Time Warner Fellow at the Women's Project Playwrights Lab, a member of P73's writer's group Interstate 73, a Writing Fellow with The Playwrights' Realm, and a member of the Ars Nova Play Group.

Sarah is the winner of the New York Stage and Film Founder's Award, the Clifford Odets Ensemble Play Commission, and residencies from the Jewish Plays Project, Tofte Lakes, and SPACE at Ryder Farm. She has been a playwright-in-residence at Budapest's Quarter6Quarter7 Festival, which presented Hungarian language staged readings of three plays from her 7th cycle (Seder, Klauzál Square, and Five Mothers) and continues to provide support for that project.

She frequently collaborates with devising ensembles such as Colorado's Telluride Theatre, Hand2Mouth from Portland, Oregon, NYC's The TEAM, and Blue Man Group. She is the collaborating playwright on *Mission Drift*, a musical about capitalism and the myth of the frontier written with director Rachel Chavkin, composer Heather Christian, and The TEAM (Coimbra, Lisbon, Salzburg, Edinburgh Fringe, PS 122 COIL Festival, Perth, Hong Kong, and London's National Theatre; winner of Edinburgh International Festival Fringe Award, Scotsman Fringe First, Herald Angel, Guardian Best of 2011, nom, Drama League for Distinguished Production of a Musical.) She is currently under commission from Ars Nova, writing a musical with The Bengsons.

She has worked behind the scenes at "The Colbert Report", The Metropolitan Opera Guild, The Big Apple Circus, and Norway's Stellapolaris, among others. As a jazz violinist, Sarah has played in groups from New Orleans to Budapest. A proud Oakland native, she currently lives in Queens. MFA: NYU.

DANYA TAYMOR (Director) is a director and translator. She is an Associate Artist at The Flea Theater, where she served as a Resident Director from 2011-2015 and received the Van Lier fellowship. Work at the Flea includes: Brian Watkins' *My Daughter Keeps Our Hammer* (NY Times/Time Out Critics Pick) and Luis Enrique Guitiérrez Ortiz Monasterio's *I Hate Fucking Mexicans*. She co-created *The Shakes*, The Flea's late night classical theater series, where she directed Shakespeare's *Romeo and Juliet* and Dekker and Middleton's *The Honest Whore* and is a frequent director of *#serials@theflea*.

Other recent work includes Brian Watkins' *Wyoming* (Lesser America), Susan Soon-He Stanton's *Cygnus* (Women's Project), Anna Moench's *In Quietness* (Dutch Kills/Walkerspace) and *Wildrose* (Sheen Center/The Claque), Lucy Teitler's *Engagements* (Ensemble Studio Theater), Shakespeare's *The Tempest* (NYU/Stella Adler) and Anton Chkehov's *The Cherry Orchard* (Stella Adler). She is a 2014-2016 Time Warner Directing Fellow at Women's Project, a 2050 fellow at New York Theatre Workshop, a 2015 Artist in Residence at Theatre for a New Audience, a New Georges Affiliated Artist, a Visiting Artist at Strasberg/NYU and an alumna of the Lincoln Center Directors Lab.

Upcoming work: Justin Kuritzkes' *The Sensuality Party* (The New Group).

THE BENGSONS (Arrangements/Music Consultants) Married duo The Bengsons have appeared across the country and around the world at such venues as Joe's Pub (NYC), NYU's Skirball Center (NYC), MASS MoCA (North Adams, MA), On The Boards (Seattle), FlynnSpace (Burlington, VT), and the Market Theater (Johannesburg, South Africa). Their indie folk opera, *HUNDRED DAYS* (Z Space, San Francisco; Know Theatre, Cincinnati) was awarded the TBA Award for Best New Musical. They have had three singles featured on national television on So You Think You Can Dance (FOX). Most recently their music was featured in Anne Washburn and Rachel Chavkin's *Iphigenia in Aulis* at Classic Stage Company. They are founding members of the Real Make Collective with Sonya Tayeh and Jo Lampert. Abigail Nessen Bengson has toured as a member of tUnE-yArDs, including an appearance on Late Night with Jimmy Fallon. Upcoming works include commissions with Ars Nova and New York Live Arts.

ARNULFO MALDONADO (Scenic Design) is a New York City based set and costume designer. Notable credits include: The world premiere of Anne Washburn's transadapted *Iphigenia In Aulis* (Classic Stage Company), the world premiere of Jenny Schwartz and Todd Almond's *IOWA* (Playwrights Horizons) and the U.S. premiere of debbie tucker green's *generations* (Soho Rep). New York credits include: Baryshnikov Arts Center, BAM, Classic Stage Company, EST, HERE Arts Center, Fisher Center for the Performing Arts, Soho Rep. Regional credits include: Anchorage Opera, Barrington Stage Company, Baltimore Center Stage, Central City Opera, Cleveland Play House, Opera Theater of St Louis, Peak Performances, Perseverance Theatre, San Francisco Ballet, Studio Arena, Two River Theater, Westport Country Playhouse. Arnulfo is a recipient of a Princess Grace Theater Fellowship (*Faberge Theater Award*) and a Clubbed Thumb affiliated artist. MFA: NYU Tisch. www.arnulfomaldonado.com

FELI LAMENCA (Scenic Design) Feli Lamenca is a production set designer originally from Barcelona. She received her Bachelor's degree in Architecture from UPC and worked as an architect prior to getting her MFA. Feli participated in international workshops and exhibitions in Sweden, France and Scotland. In 2008, Feli moved to New York to gain experience as a beginning architect. She later became a set designer. Since then, she collaborated in short film projects such as *Afronauts*, directed by Frances Bodomo that was presented at many film festivals, and got great response at Sundance and Berlinale. She also collaborated outside NYU with off-off Broadway theaters such as La Mama.

MASHA TSIMRING (Lighting Design) is a Brooklyn based lighting designer for performance. Recently: *The Bachelors*, *Wyoming* (Lesser America); *Hand, Foot, Fizzle, Face* (Piehole/JACK); *Three Translations of Uncle Vanya* (New Saloon/Invisible Dog); *Agua Furiosa* (CONTRA-TIEMPO); *The Universe is A Small Hat* (Babycastles/

Sarah Lawrence), *So Long Willy, Let's Go Home* (I AM A BOYS CHOIR); *Cat on A Hot Tin Roof* (Triad Stage); *The Way West* (Marin Theatre Co); *American Night: The Ballad of Juan Jose* (Yale Repertory Theatre); *4000 Miles* (Hangar Theatre). www.mashald.com

CLAUDIA BROWN (Costume Design) Past Work: *Tthiake Care, Family Furniture, I See You, The Vandal, Dawn, Oh, The Humanity, Mrs Farnsworth* (The Flea Theater); *What I Did Last Summer* (Signature Theater); *Basetrack, Basetrack Live, Crowbar, Bad Penny* (EnGarde Arts); *Crazy Mary* (Playwrights Horizon) Regional: Hartford Stage, Williamstown. Regional Ballet: Hartford Ballet, Arizona Ballet and Zig Zag Ballet. Film credits: *River's Edge, Trust, The Ballad of Little Jo, Smoke, Copycat, Starting Out in the Evening*.

BEN TRUPPIN-BROWN (Sound Design) New York: *Horse Girls* (The Cell), *That Poor Dream* (The Assembly), *A Free Man of Color* (NYU Graduate Acting), *Blackbird* (Schmucks Theatre Company), *Blood Play* (The Debate Society), *The Marriage of Figaro* (Atlantic Acting School). Regional: Williamstown Theatre Festival, Kitchen Theater Company. London: The Circus Space.

ALEX J. GOULD (Fight Director) Alex is an actor/fight director in New York and is former member of the Bats. Fight Director: *Horse Girls* (The Cell), *Happily After Ever* (59E59). He's also choreographed for The Flea Theater, Ensemble Studio Theater, The New School, Fordham/Primary Stages, Partial Comfort, Blogologues, and Pulse Ensemble Theater. And he's worked regionally at the Williamstown Theater Festival. Alex is currently performing in *The Woodsman* at New World Stages. Edu. AMDA

MARTE JOHANNE EKHOUGEN (Puppet Design) aka Doctor Superhelga has designed sets, puppets and costumes in Norway and New York. Most notable recent work is the puppets for the Tony nominated *Hand To God* (by Robert Askins), currently playing at London's West End. Marte holds a M.F.A in set design from NYU and comes from a background of producing devised, experimental theater in Norway. Marte is also a sculptor, illustrator and the proprietor of "Doctor Superhelgas Toy Imperium (and Petting Semetary)". She lives in a house full of benign monsters. www.superhelga.com

ZACHARY SERAFIN (Props Master) is a New York based scenic designer/carpenter/props master/artist/maker, who holds a Bachelor of Arts degree from Buffalo State College. Currently, he is the Resident Set Designer for Red Monkey Theater Group and the Children's Acting Academy. Previously Zach has propped *Neighborhood 3: Requisition of Doom* for The Flea. Zach's ambitions are expansive, with interests in the entertainment field as well as performance art, event and exhibit design, visual merchandising and theme park design. For more please visit www.zachserafindesigns.com

JOCELYN CLARKE (Dramaturg) Jocelyn Clarke is a freelance dramaturg and writer. He is currently Theatre Adviser to the Arts Council of Ireland and dramaturg at the American Voices New Play Institute at Arena Stage in D.C. He has taught dramaturgy at the John Kennedy Centre for the Performing Arts, Columbia University and Trinity College Dublin. He has worked as a dramaturg on several productions by The Blue Raincoat Theatre in Sligo, and has written five adaptations for the company – *Alice in Wonderland*, *Alice Through the Looking Glass*, *The Third Policeman*, *At Swim Two Birds* and *The Poor Mouth*. He has written six plays for Anne Bogart and the SITl Company – *Bob*, *Alice's Adventures Underground*, *Room*, *Score*, *Antigone*, and *Trojan Women (After Euripides)*

CHARISE GREENE (Dialect Coach) NY Acting: The Flea, New York Theatre Workshop, EST, Dixon Place, Living Theatre, Interart, Theatre for the New City, Access, Canal Park Playhouse, Jack, The Connelly. Coaching: Dominic West & Ruth Wilson (“The Affair,” Showtime), Anne Hathaway (*Grounded*, The Public), Ruth Wilson (*I Am The Pretty Thing That Lives in the House*), & productions at The Atlantic, The Flea, IATI and more. Associate Artist: Blessed Unrest and Fault Line Theatre. Charise has taught acting at numerous universities & conservatories. www.charisegreene.com.

TZIPORA REMAN (Stage Manager) Selected Credits: Edinburgh Fringe (Production Manager) Deluxe Digital Studios (Project Manager), Iaml (Production Manager).

JAKE BECKHARD (Assistant Director) Jake Beckhard is a director, deviser, and the producing artistic director of Artilliers (www.artilliers.org). He is the 2016 Westport Country Playhouse Directing Fellow, and a member of the 2013-14 SDC Observership class. His work has been seen at Theater for the New City, #serials@theFLEA, The Bridge at Shetler, The Davenport Theater, Atlantic Stage Two, Chinatown Soup, and apartments across Manhattan. He has been an assistant to directors including Mia Rovegno (*The Civilians*), Paul Bedard (*Theater in Asylum*), and Molly Smith (*Arena Stage*, Washington DC). He likes plays that are like a rain dance. www.jake-beck.com

BECKY HEISLER (Assistant Lighting Designer) Becky Heisler is a Lighting Designer based in Queens. She has BFA in Lighting Design from Penn State in 2013. This is her third show with The Flea, the first being *The Nomad* last year and she is also the Assistant on The Flea's current production of *Wolf in the River*. Her previous credits include Lighting Designer for *Bamboula! Musician's Brew*, *Mor Dance Spring Performance*, and *A Brief History of the Soviet Union*. She has also acted as Assistant Lighting Designer on *Company!* for the Bucks County Playhouse and *A Funny Thing Happened on the Way to the Forum* at Two River Theater.

KAILIA HILL (Assistant Stage Manager) is a recent graduate from Otterbein University with a BFA in Theatre: Design/Technology. She has previously worked with the Williamstown Theatre Festival in their 2014 season, the Sanguine Theatre

Project Playwright Festival, Hard Spark's R&J&Z, The Flea, the Public Theatre, the NYC Fringe Festival, and Half Moon Theater

A NOTE FROM THE PLAYWRITER:

The Place We Built is broadly based on the true story of Sirály, a bar/café/theater/music space in the heart of the 7th that was shut down in Spring 2013. The political and historical events in the play are true, but the story of the bar combines fact with fiction and the characters are my own invention. This version of the play is intended for an American audience. I'll eventually create a version intended for a Hungarian audience in partnership with the Quarter6Quarter7 Festival. If you're ever in Budapest, visit the founders of Sirály at their new place, Aurora.

SPECIAL THANKS TO

Eszter Súsán, Adam Schonberger, Bob Cohen, Lackó Bernáth, Levente Littvay, Andrea Ausztrics, Eszter Balassa, Anita Rackoczy, András Dömötör, Tamás Halász, György Baráthy, Gergely Zöldi, Garth Silberstein, and Barb Lanciers, and the numerous other friends who shared their stories with me. Thanks to Jocelyn Clark, Portia Krieger, Ben Kamine, Emily Shooltz, Alex Barron, Katherine Kovner, Kate Pines, David Winitzky, Jeremy Stoller, Johanna Pfaelzer, Becca Kahane, and Ari Roth for their crucial roles in helping this play come to life.
And as always, thanks to Rick Stinson.

ORIGINAL AND ADAPTED MUSIC (IN ORDER OF PERFORMANCE)

Letter Song

Lyrics by Sarah Gancher
Music by The Bengsons

Tuk Mi Kazaha

Traditional from Bulgaria
Arranged by The Bengsons

THE FLEA STAFF



NIEGEL SMITH (Artistic Director) is a theater director & performance artist. His theater work has been produced by Classical Theatre of Harlem, HERE Arts Center, Hip Hop Theatre Festival, The Invisible Dog, Luna Stage, Magic Theatre, Mixed Blood, New York Fringe Festival, New York Live Arts, Phoenix Theatre Ensemble, The Public

Theater, Summer Play Festival, Todd Theatre and Under the Radar, and his participatory performances have been produced by Abrons Arts Center, American Realness, Dartmouth College, Elastic City, The Invisible Dog, Jack, The New Museum, Prelude Festival, PS 122, the Van Alen Institute and Visual AIDS. He often collaborates with artist Todd Shalom and playwright/performer Taylor Mac.

Smith, a graduate of Dartmouth College, was the associate director of the Tony Award winning musical *FELA!*, assistant directed the off-broadway production of *The 25th Annual Putnam County Spelling Bee* and both the Broadway and off-broadway productions of Tony Kushner's *Caroline, or Change*. He has received residencies, grants and/or fellowships from Brooklyn Arts Council, Brooklyn Arts Exchange, Lower Manhattan Cultural Council, Sundance Theatre Lab, Theater Communications Group, Tucker Foundation, Van Lier Fund and VoxFest. Before surviving high school in Detroit, he grew up in the North Carolina piedmont, fishing with his dad, shopping with his mom and inventing tall-tale fantasies with his two younger brothers.



CAROL OSTROW (Producing Director) Carol Ostrow (Producing Director) joined founder Jim Simpson at the helm of The Flea in 2001 and *The Guys* marked her return to Off-Off-Broadway. She was the OBIE-award winning Producing Director of the Classic Stage Company as well as the founder and original Producing Director of The Powerhouse Theater at Vassar, now

in its 31st season. In between, she has been an adjunct professor of theater at Vassar College, Chatham College and McGill University. For The Flea, Carol has produced 15 seasons of world premiere productions and has been responsible for the sound management of the theater's increasing programming and budget. She is also overseeing The Flea's capital campaign that will result in a new performing arts center for The Flea to be launched in 2017. (Stay tuned!) Carol is a graduate of Vassar College and the Yale Drama School. She is a new trustee of Vassar and she also serves on the Board of Advisors of the Yale Drama School. Beyond her alma maters, she is a member of the board of Central Synagogue, the National Psoriasis Foundation, the MacDowell Colony and LAVA, an acrobatic dance collective in Brooklyn. She is also a Wall Street Journal Expert, where she writes on small business for the paper's online edition. Married and the mother of four incredible and launched young adults, she and her family count Pittsburgh, London, Montreal and now New York City once again as home.



TIM CATLETT (Capital Project Manager) Tim Catlett's life has involved many twists and turns. A military upbringing took him around the world preparing him for the crazy life of a theater professional. Back in New York after almost 30 years, his time was spent in national touring, television, radio, independent and studio films, and no little amount of his first love; the stage, variously as designer, technical director, and/or director. He is a WI-certified Theater Teacher; a dearly loved 16 years of the hardest theater ever. He also has a passion for being creative safely, consulting and lecturing on theater safety programs. Additionally, he has been a magician and magic consultant for over 30 years. Most importantly, he is the proud father of a young lady who is a Shakespeare fanatic, and a young man who thinks working backstage would be awesome. He relishes the prospects of his time to come with The Flea.



ERIN DALEY (Artistic Associate) Prior to The Flea, Erin produced the Eugene O'Neill festival at Arena Stage and spent three years as a coordinator in Los Angeles working in film and commercials. After cutting her teeth as an independent producer and director, Erin is thrilled to have found a home at The Flea where she can continue to work with exciting and innovative artists. Erin is proud to have graduated from Skidmore College.



KAYLA SKLAR (Audience Development Associate) Passionate about non-profit theater, Kayla has previously worked at 59E59, Ars Nova, and The Public. She graduated from the University of Georgia with degrees in Digital Marketing and Mass Media, and is proud to have been the Artistic Director of The Thalian Blackfriars, one of UGA's oldest organizations. Having lived in Atlanta for most of her life, she's excited to finally call this wonderful city her home.



CHARLIE MADISON (Development Associate) is a recent graduate from Brandeis University, where he majored in both Psychology and Musical Theater Writing. While at Brandeis, Charlie wrote and directed an original play, *Lost Girls*, and an original full length musical, *Grace*. Other notable accomplishments include music directing his undergraduate a cappella group, Company B, and serving as Programs Assistant in the Brandeis Office of the Arts. Charlie began his experience in not-for-profit theater as an Artistic Intern at Central Square Theater (Cambridge, MA); since

then he has served as the inaugural Summer Apprentice at the Arden Theatre Company (Philadelphia, PA) and was Manhattan Theatre Club's Fall 2015 Institutional Giving Intern. Out the office, Charlie enjoys singing his heart out, writing musicals and plays, and thrifting: his inspirations include Jeanine Tesori, Janet Jackson, Adam Guettel, and the one and only Mariah Carey.



OLVIA LLOYD (Marketing Associate) is a West Virginia native, based in New York since 2014. Both a director and marketing whiz, Olivia has worked with Girl Be Heard, The Secret Theater, New York New Works, and the Weeksville Heritage Center in Crown Heights. Olivia is a proud alumnae of the University of Michigan (BFA Directing, 2013).



ALI AKBARIAN (Technical Director) Born in Canada, Ali has always been captivated by the mechanics of his surroundings and curious as to how things work on the inside; logically and emotionally. After a glimpse of potential in 2006, Ali set out to the University of Florida and found a path in theatre. Immediately following his graduation at the top of his class in Scenic Design; he was contracted for a year long residency at one of the most successful regional theatres in the southeast, The Hippodrome. Ali was contracted as Production Manager by a leading Event Decor company in the southeast region months before the end of his residency. Excelling in the commercial market while managing over eight productions a week with over thirty staff members and over-hire in multiple spaces; Ali's future in theatre was fading away quickly. On December 20th, 2015 this realization was cemented into his soul and so the following week he sold his motorcycle, car, and three quarters of his apartment. By December 27th, 2015 Ali moved home, Brooklyn, New York!



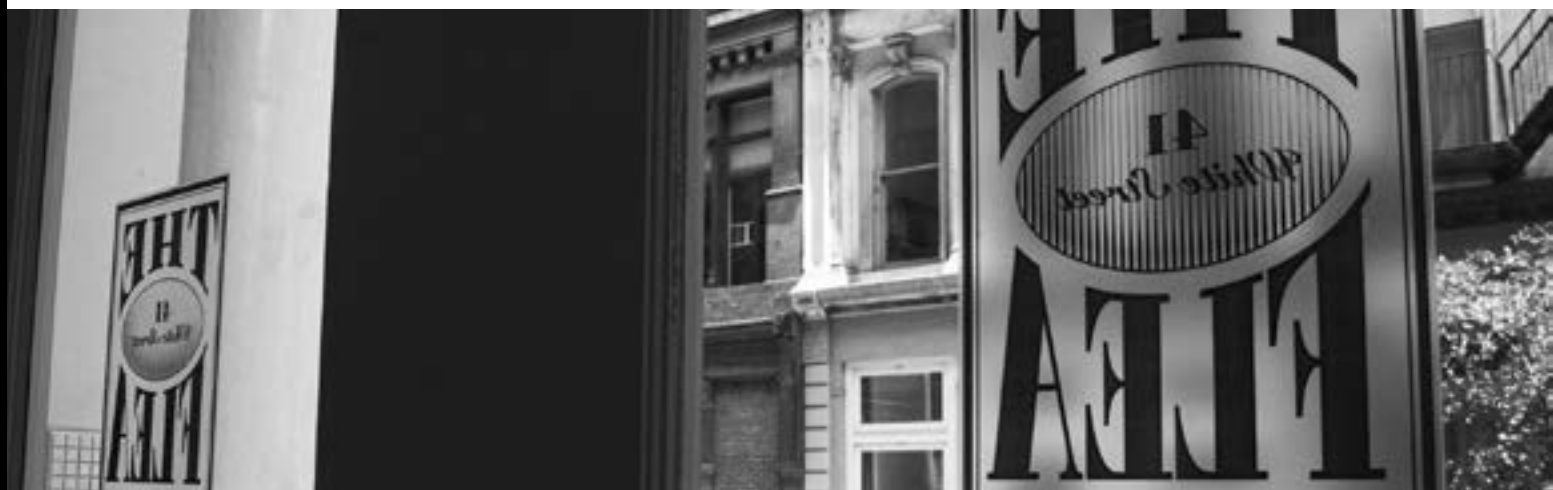
JEN MEDINA-GRAY (Assistant Technical Director) is a 2014 graduate of Syracuse University with a BFA in Design and Technical Theatre. She studied set design and technical direction in school and aspires to be a positive force in the technical theatre world. After living in Portland, Maine for a year after school and going on a soul searching trip through Eastern Europe, Jen landed in NYC in September 2015 and has been at The Flea ever since.

WHAT IS THE FLEA?

The Flea is our theater: two unique and intimate performance spaces, located here at 41 White Street in Tribeca. But The Flea is also an award-winning producing organization, founded in 1996, that offers more than 250 cutting-edge theatrical and multi-disciplinary performances each year and gives voice to some of the most exciting and innovative writers of our time.

Founded from the purely artistic impulse to create “joyful hell in a small space,” our body of work has earned us accolades from across the globe including two Obie Awards for Best Production, an Otto for Courageous Political Theater, and a Drama Desk Award Special Award for our commitment to adventurous theater. Our 2001 production of *The Guys*, a raw artistic response to the events of 9/11, became a phenomenon that played to sold-out houses for 13 months and quickly cemented our leadership role in the downtown, Off-Off-Broadway and Lower Manhattan communities.

The Flea is a beacon for adventurous audiences and creative artists of all stripes, from the young striver to the legendary veteran. More than 150,000 people have come to The Flea to witness the rare spark created when artists are given free rein to play, experiment and invent—often in ways that the commercial theater can’t support. And it is that spark that fulfills our mission, pure and simple: to embody the spirit of adventure and excitement that has defined Off-Off-Broadway since its inception.



WHO & WHAT ARE THE BATS?

The Bats is our critically acclaimed resident company, cast anew each year from over 1,000 aspiring young actors. Voted “Best Off-Off-Broadway Company to Act In” by Backstage, being a Bat offers young artists the rare opportunity to break into the field with real life experience, performing in front of an audience on a regular basis and working to support The Flea and its visiting artists. All in one night, a Bat may tear your ticket, pour you a drink and rivet your soul to the stage.



WHAT IS OFF-OFF-BROADWAY?

Dating back over fifty years, Off-Off-Broadway began informally--an alternative, non-commercial environment where new ideas and projects were born out of energetic and often happenstance encounters. Hundreds of well-known artists credit this adventurous and free-spirited time with their falling in love with theater, and getting good at what they do.

Visit www.theflea.org for information on all things Flea!

Find The Flea Theater on Facebook, Instagram, Twitter & Tumblr.

THE BOARD OF DIRECTORS

Chair

Linda Schupack

President

Carol Ostrow

Secretary

Douglas Liebhafsky

Treasurer

Joanna Smith

Kyle Chepulis

Michael Graff

Jamie Harris

Wendy Harrison Hashmall

Andrea Miller

Stephanie Morimoto

David Prittie

Nanahya Santana

Jim Simpson

Jeremy Smith

Niegel Smith

Tony Tramontin

Basil Walter

Sigourney Weaver

Katherine White Weinhoff

Stephen Weinroth

Davis Weinstock

Emmeline Wexer

THE FLEA I.P.'S

In June of 2009 The Flea launched a unique patron program called The Flea IPs - an elite and dedicated group that helps to make the dreams of The Flea a reality. Flea IPs gain insider access through exclusive events including private talk-backs, intimate artist dinners, master classes and first-look readings. Flea IPs commit their support by generously pledging \$5,000 each year.



Interested? We'd love to make you a Flea IP too!

Please contact Carol Ostrow at 212.226.0051 x104 or carolo@theflea.org for more information.

The Flea proudly salutes our Flea I.P. members and thanks them for their unwavering support.

THE FLEA CAPITAL CAMPAIGN

Twenty years ago The Flea's founders undertook an artistic experiment, renting an old TriBeCa factory in the wilds of Lower Manhattan and opening the doors to the most iconoclastic and talented artists they could find. Since then The Flea has evolved into an award-winning theater known for presenting the very best of Off-Off-Broadway theater, music and dance.

We have also become an emblem for the resilience of Lower Manhattan, drawing more than 150,000 people to the area since the 9/11 attacks. To continue in that leadership role, we recently purchased a site nearby that is soon to become our permanent new home. Our goal is to continue producing our own intimate and exhilarating work while providing stability to dozens of other artists and performance groups. We are grateful to the following for their lead gifts to the project:

INSTITUTIONAL SUPPORT

The Shana Alexander
Charitable Foundation
Bloomberg Philanthropies
Booth Ferris Foundation
Borough of Manhattan New York
Scott M. Stringer, President
The Irene Diamond Fund

Dormitory Authority
of the State of New York
Paul T. Williams, Jr., President
City of New York
Michael R. Bloomberg, Mayor
Empire State Development Corporation
Julie Shimer, Chairman
Ford Foundation

Howard Gilman Foundation
 International Creative
 Management, Inc.
 Lower Manhattan Cultural Council
 The Lower Manhattan
 Development Corporation
 LuEsther T. Mertz Advised Fund
 Massey Knakal Real Estate
 William Morris Endeavor Entertainment
 Newman's Own Foundation
 New York City Council
 Christine C. Quinn, Speaker
 Margaret Chin, Council Member
 James Van Bramer, Council Member
 New York State Council on the Arts
 Aby Rosen, Chair
 Lisa Robb, Executive Director
 Pakula Productions, Inc.
 The Prospect Hill Foundation
 Emma Sheaffer Charitable Trust
 The September 11th Fund
 The Fran & Ray Stark Foundation
 State of New York
 Andrew M. Cuomo, Governor
 George E. Pataki, Governor
 The Dorothy Strelsin Foundation
 United Talent Agency

VISIONARIES (\$500K+)

Anonymous
 Carol Ostrow & Michael Graff
 A.R. & Molly Gurney

ANGELS (\$250K+)

Anonymous
 LuEsther T. Mertz Advised Fund
 Paul Elston & Frances Beinecke
 Douglas Liebhafsky & Wendy Gimbel
 Sigourney Weaver & Jim Simpson

GUARDIANS (\$100K+)

Bloomberg Philanthropies
 Dormitory Authority
 of the State of New York
 Paul T. Williams, Jr., President
 Booth Ferris Foundation
 International Creative
 Management, Inc.
 The Prospect Hill Foundation
 Kenes Rakishev &
 Aselle Tasmagambetova

Katherine & Samuel Weinhoff
 Stephen & Cathy Weinroth
 Davis & Betsy Weinstock

PRODUCERS (\$50K+)

The Irene Diamond Fund
 Lower Manhattan Cultural Council
 United Talent Agency
 Lauralee & Walter N. Howley
 Dennis Mehiel
 All The Way Foundation
 Liam Neeson
 In Memory of Natasha Richardson
 David Richenthal
 Celeste & Tony Tramontin

DIRECTORS (\$25K+)

Massey Knakal Real Estate
 New York State Council on the Arts
 Aby Rosen, Chair
 Lisa Robb, Executive Director
 The Fran & Ray Stark Foundation
 Jim & Suzy Cameron
 Kyle Chepulis
 Susan Cooper Cronyn
 Wendy & David Hashmall
 Marilyn & Jeffrey Katzenberg
 Kathleen Kennedy & Frank Marshall
 Ed & Patricia Matthews
 Gould Family Foundation
 David Prittie
 Daryl Roth & Jordan Roth
 Dan & Sue Rothenberg
 Linda Schupack & David Good
 Ted Snowdon
 Edward Trach
 Basil Walter

ARTISTS (\$10K+)

Newman's Own Foundation
 Emma Sheaffer Charitable Trust
 Roger Berlind
 André Bishop
 The Lecomte du Noüy Foundation
 Kent Lawson & Carol Tambor
 Ellen McCourt
 Andrea & George Miller
 Nanahya Santana & Hume Steyer
 Jeremy Smith
 Monica Gerard-Sharp & Ali Wambold

PATRONS (\$5K+)

Anonymous
 William Morris Endeavor Entertainment
 The Dorothy Strelsin Foundation
 Marshall & Nina Brickman
 Lois Chiles
 Leslee G. Dart
 E.L. & Helen Doctorow
 William H. Draper III &
 Phyllis C. Draper
 Robert Eimicke & Roslyn Black
 Kristin & Gary Friedman
 Jane Gelfman
 Edwin & Lorna Goodman
 The Anrol Foundation
 Mary G. Gurney
 Sylvia G. & Benjamin F. Johnson and
 Sarah East Johnson
 Mark Kaplan
 Kath Lavidge & Edward McKinley
 Cassie Murray & William Plapinger
 Susan Sarandon
 Mike Nichols & Diane Sawyer
 Lawrence Shainberg & Vivian Bower
 George Sheanshang
 Jeanne S. & Herbert J. Siegel
 Julie & Andrew Stanton
 Becky Tesich
 Emily & Lily Wiest

FRIENDS (\$1K+)

The Shana Alexander
 Charitable Foundation
 Pakula Productions, Inc.
 Robert & Betsy Barbanell
 Agnes Martin Barley
 Tom & Meredith Brokaw
 Arthur H. Brooks
 David C. Bryan
 Beth Burnam
 Arthur & Linda Carter
 Michael J. Chepiga &
 Pamela Rogers Chepiga
 in honor of Kathy White
 Blythe Danner
 Robert L. Denton
 Arlene Donovan
 John & Karen Erickson
 Mr. & Mrs. John Galen
 Joseph F. Godfrey & Keith Halstead

James & Toni Goodale
 Sarah C. Goodyear
 Jane Whitney Gruson
 Christopher Bumcrot & Evelyn R. Gurney
 Lynne Halliday & B.H. Barry
 Robert & Marilyn Harbage
 Patrick Herold
 Fenita Bilgoraj Heyman
 Cindy & Alan Horn
 Lise Jeantet
 Emily F. Johnson
 Marsha Berkowitz & Wayne Kabak
 Marianne & David Kaplan
 Jerome B. Kauff
 Stephen & Marina P. Kaufman
 Louise Lamphere
 in honor of Basil Walter
 Claire & David Lane
 Jerry Levine & Nina Tassler
 Paige & Nicky L'Hommedieu
 Kate H. Marber
 Israela Margalit
 Marla Mayer & Chris Ahearn
 Julian Mazor
 Michael Miller
 Robert & Evelyn Miller
 Susan Monserud & Ric Sonder
 Harry Moses & Randy Lehrer
 Bernard W. Nussbaum
 Gilbert Parker
 Juliet & Michael Patsalos-Fox
 David B. Pearce, M.D.
 Mary Ann & Bruno A. Quinson
 Ivan Reitman
 In Memory of Harold Ramis
 Deborah Schneider & Jim Tilley
 Eleanor Shakin
 Jonathan Sheffer
 Barry Skovgaard & Marc Wolinsky
 Bernadette Speach &
 Jeffrey Schanzer
 Andrew & Julie Stanton
 Scott & Dhuane Stephens
 Michael & Marjorie Stern
 Bruce Sunstein
 Holland Taylor
 David & Deborah Trainer
 Victoria G. Traube
 Ginny & Bob Walther
 Emmeline Wexer

Marguerite C. Whitney
Rachael Worby
F.A. Zunino

We apologize if you have been left off this list.
Please contact Charlie Madison at
charliem@theflea.org for any corrections.

List as of 4/15/16

THE FLEA ANNUAL FUND

National Endowment for the Arts
New York State Council on the Arts
New York City Department
of Cultural Affairs
Axe-Houghton Foundation
The Barbara Bell Cumming Foundation
Dramatists Guild Fund
The Educational Foundation of America
The Fan Fox
& Leslie R. Samuels Foundation
Friars Foundation
Howard Gilman Foundation
Distracted Globe Foundation
Gurney Playwrights Prize Fund
The Janey Fund
The John Golden Foundation
Leon Levy Foundation
Lucille Lortel Foundation
The Dorothy Loudon Foundation
The Maurer Family Foundation
Mertz Gilmore Foundation
The Poses Family Foundation
The Prospect Hill Foundation
The Shubert Foundation
The Harold & Mimi Steinberg
Charitable Trust
The Dorothy Strelsin Foundation
Venturous Theater Fund
of the Tides Foundation
Warburg Pincus

List as of 4/15/16

We apologize if you have been left off this list.

Please contact Charlie Madison at charliem@theflea.org for any corrections.

For more information on our Capital Project, please contact Carol Ostrow, (212) 226-0051 x104



FLEA MEMBERS

\$5,000 Flea I.P.

James Cameron
Lois Chiles
Lauralee & Walter N. Howley
Kristina & Stephen Lang
Sahra Lese
Barbara Vogelstein

\$2,500 Vanguard

Monica Gerard Sharp & Ali Wambold
Cassie Murray & William Plapinger
Miles Nordin
Esme Usdan
Mary & Jerome Vascellaro

\$1,000 Iconoclast

John & Gaily Beinecke
Virginia Benzak
Jackie Brody
Beth Burnam
Larry Condon
Bill & Phyllis Draper
Elizabeth Duggal Taghipour
Karen and Peter Jakes
Mark Lebwhol
Julian Mileta
Shelly & Neil Mitchell
Linda Carlson & Robert Santos
Souths
Alberta & Henry Strage
Aida & Charbel Tagher
Cynthia King Vance & Lee Vance
Beau Willimon

\$500 Partner

Marilyn Armel
Henry Finder & Kwame Anthony Appiah
Lois Conway
Blythe Danner
Robert J. & Katherine N. Del Tufo
Christopher Durang
George L. Fleming
Bobby & Vicki Freeman
Cammy Grusd & Dan Zamlong
Jan Guifarro
The Geoffrey Gund Foundation

Evie Gurney & Chris Bumcrot
Carol M. Kaplan
Marina & Stephen Kaufman
Claire & David Lane
Gregory Long
Payne Middleton
Douglas & Nancy Ostrow
Marcia & William Pade
Petrarca
Betty Robbins
Carla Solomon & Antonio Magliocco Jr.
Judith Tatenbaum

\$250 Donor

Anonymous
Clay B.
Robert & Betsy Barbanell
Deborah & Bruce Berman
Linda Blacken
Rich Bornstein & Sarah Reines
Tracy & Spencer Brog
C&S International Insurance Brokers, Inc.
Jeffrey Cane
Lucy & David Carson
Kenneth G. Bartels & Jane Condon
Ellen Davis
Joanna Dean
Christine Doudna & Richard Grand-Jean
Sara & Fred Epstein
Alice Ericsson
William Farkas
Joe Godfrey & Keith Halstead
Bruce Goodrich
Howard & Bonnie Graff
John & Diane Haney
Harris & Randee Horowitz
International Creative Management, LLC
Dr. Daryl Isaacs
Irina Kashan
Staci Levine
Seth Meyer
Cherrie Nanninga
Harriet & Gregg Orley
John Rosenmiller
Marjorie Rosenthal
Ellen & Norman Roth

Laurie & Arthur Sackler
 Kathleen E. Shannon
 Caroline & Kevin Smith
 Peter Stamos
 Marjorie & Michael Stern
 Gordon Stewart
 Joel Stillerman & Sue Hollenberg
 Jonathan Weiner
 Anita & Byron Wien
 Melissa Wohlgemuth

Contributor \$100

Anonymous (8)
 Edward Albee
 Claudia Alcorn
 Misty Anderson
 Ellie & Bob Berlin
 Nadia Bernstein
 Monty Blanchard & Leslie Tcheyan
 Barbara & Gary Bloom
 Rose Bonczek
 Sarah Bond
 Jonthan Brady
 George Bunn
 Linda Casper
 Ronni Casty
 Susan & Jeffrey Chase
 Debra & Robert Chavez
 Joshua & Anne Cohen
 Ann & John Costello
 Sue B. Dorn
 Joe Dowling
 Frank & Helga Doyle
 Donna Epstein & Monte Peterson
 Bruce Fagin
 Susan Fleischer
 Martha J. Fleischman
 Charles Forma
 Henry Fraimow & Jacqueline French
 Tilo Fruth
 Walter Gilbert
 Sealy & Timothy Gilles
 Betty & Joshua Goldberg
 Joan Goldfield
 April Gornick
 Gordon Gould
 Nan Graham
 Zach Grenier
 Jennifer Haley

Kathleen Halvey
 Katherine Hanson & James Fraser
 Mary R. Hardin
 Joe Hardy
 Julie Harris
 Jonathan Harrison
 Susan Hilferty
 Douglas Hillmer
 Willy Holtzman
 Gale Jacobsohn
 Katherine Janca
 Sarah East Johnson
 Emily Johnson
 Benjamin Kamine
 Douglas Kreitzberg
 JoAnn Kruger
 Richard Kuczkowski
 Rosanne Kumins
 Ronald Laeremans
 Susan Lagomarsino
 Charles Linzner
 Mark & Susan Lippitt
 Murray Luftglass
 Jane Macan
 Cecil Mackinnon
 M. Gaston
 Mike & Giselle Mahoney
 Malikha Mallette
 Kate H. Marber
 Jeffrey Matchen
 Jill Matichak
 Patricia Mcelhone
 Elaine Montgomery
 Ellen & Michael Mullen
 Drs. Benjamin Natelson & Gudrun Lange
 Julia Noulin Merat
 Teri & Glenn Jampol
 Elizabeth Propp
 Gary Purwin
 Christopher & Lynne Ramsey
 Wayne A. Ransier
 Joe Regan
 Debbie Schrager
 Roberta Lee Scott
 Michael Seel
 Eleanor Shakin
 Todd Shalom
 Peter Simon
 Fran Smyth

Matthew Smyth
 Preston Stahly
 Robert Stuart
 Douglas Stumpf
 Edward & Miranda Tinsley
 Craig Troyer
 Phyllis Urman-Klein
 Lisa Van Curen
 Kathryn Wagner
 Sturgis Warner
 Alan Wertheimer
 Edward Whitney
 Maury Wind
 Cynthia Yang
 Patricia Yarberry-Allen
 Jeremy Zimmer
 Peter Zingg

\$50 Supporters

Anonymous (6)
 Marvin H. Albert
 Da Arvig
 Karen Bernard
 Susan Bernfield
 Michael Borgmann
 Gary Bradley
 Steven Charen
 Evelyn Chen & Johnson Tang
 Fred Chernoff
 John Cipoletti
 Dr. Robert R. Cole
 Phyllis Dalton
 Martin Domb
 Malcolm Duffy
 Diane & Barry Eisenstat
 Megan Ferguson
 Andrew Fink
 MK Fischer
 Helene Foley
 Judi Forman
 Cly Fowkes
 Stephen Friedman
 Bill Gill
 Carl Gonzalez
 Emily Graff
 John Graffeo
 Jodi & Robert Harrison
 Joanne C. Higgins
 Paul & Joanne Howard

Allen Hubby
 Stuart Hutchison III
 Steven Ingerman
 Chris Jacob
 Cathy & Andy Jacobs
 Carol W. Kelley
 Ann Krsul
 John Langdon
 Allan Lefcowitz
 Bernard & Steffi Liberman
 Warren Liebold
 Dayna Lucas
 Anita Mandl
 Stephen Marchetta
 Edwin Martin
 Julie Mellby
 Audrey E. Moore
 Karla Morse
 Barbara & Ian O'Connell
 Daniel & Lola O'Connell
 Brandon J. Ortiz
 Carole Pesner
 Jody Peterson
 Susan C. Philips
 William Pike
 Catherine Powell
 Nancy Reynolds
 Mary Schwab
 Robert D. Sholiton
 Jeanne & Steve Stellman
 Alvin Taylor
 Mary Voce
 Kevin Walz
 J. Marvin Watts
 Leonora Wiener
 Graham Winter
 Rita Wolf
 Ruth S. Zachary
 Ellen & Allen Zarkin

List as of 4/15/16

We apologize if you have been left off this list.
 Please contact Kayla Sklar at
kaylas@theflea.org for any corrections.

FLEA REWARDS

Use your Flea Member Card or ticket stub to take advantage of these special offers from our downtown partners.

Petrarca (34 White St.)

212-625-2800 / petrarcatribeca.com

Italian Restaurant & Wine Bar

Receive a 10% discount on your bill

Da Mikele (275 Church St.)

212-925-8800 / damikele.com

Neapolitan-Inspired Italian Restaurant

Receive a 10% discount on the bill

Souths (273 Church St.)

212-219-0640 / southsnyc.com

Neighborhood Bar and Restaurant

A complimentary glass of wine with the order of an entrée

Billy's Bakery (75 Franklin St.)

212-647-9958 / billysbakerynyc.com

Deserts and Other Baked Goodies

Buy one cupcake & get the second 1/2 off

Añejo (301 Church St. at Walker)

212-920-6270 / anejotribeca.com

Mexican

A complimentary Plata margarita with any food purchase

Church Street Tavern (313 Church St.)

212-804-7766 / churchstreettavern.com

Modern Manhattan Tavern

Recieve 10% off your bill

TriBeCa Grill (375 Greenwich St.)

212-941-3900/myriadrestaurantgroup.com

American Grill

Enjoy a complimentary sommelier's choice glass of wine with dinner.

Nish Nush

(88 Reade Street, corner of Church)

212-964-1318/www.nishnushnyc.com

Fresh, gourmet hummus, falafel, baklava and more – 10% off with your membership card!

Sun In Bloom (165 Church St.)

212-791-6700/suninbloom.wordpress.com

Gluten-Free, Vegan & Raw Food Kitchen in Tribeca & Brooklyn- 10% off with your membership card!

**CHECK THEFLEA.ORG OR CALL
212-226-0051 x101 FOR
THE LATEST UPDATES & DEALS.**

THE FLEA THEATER MEMBERS PROGRAM

Get Special Attention. Support The Flea. Be a Member.

Our theater is tiny and we sell out...fast. Members get guaranteed seats plus exclusive discounts, invites, drinks & inside info! All levels of membership are 100% tax-deductible.

Become a Member

\$25 Member

No booking or convenience fees
VIP ticket processing

\$50+ Supporter

All of the above, plus:
Exclusive discounts & deals to partner businesses
First to know of exciting post or pre-show Flea events
Special thanks in Flea programs

\$100+ Contributor

All of the above, plus:
Reserved seating for you and your guests
Exchange tickets up to 24 hours in advance
One complimentary drink at our bar before every show

\$250+ Donor

All of the above, plus:
Invitations to readings and special Flea events
One complimentary drink at our bar for your entire party

\$500+ Partner

All of the above, plus:
Dinner reservations at select Flea Partner restaurants
Unlimited complimentary drinks

\$1,000+ Iconoclast

All of the above plus:
Invitation to select Opening Night performances, select Flea Fêtes, and cast parties
Access to Broadway house seats (purchase necessary)

\$2,500+ Vanguard, Flea I.P.'s

Interested? Email carolo@theflea.org for more information!

CALL 212.226.0051 x101, or MAIL/FAX the form below to join!

I WANT TO JOIN THE FLEA! (Please check membership level below)

_____ \$25 Member

_____ \$50 Supporter

_____ \$100 Contributor

_____ \$250 Donor

_____ \$500 Partner

_____ \$1,000 Iconoclast

NAME (as should be listed) _____

ADDRESS _____

CITY, STATE, ZIP _____

EMAIL _____ PHONE _____

CREDIT CARD # _____ EXP. _____ SECURITY CODE _____

Mail this form with a check to THE FLEA MEMBERS PROGRAM, 41 White Street, New York, NY 10013 or fax this form with your credit card information to (212) 965-1808. Questions or concerns? Call us at 212-226-0051 x107.