A bloody knife lies on a green lawn. The blade is stained with red blood, and the handle is dark. The background is a lush green lawn with some scattered leaves and a path leading into the distance.

NEIGHBORHOOD 3: REQUISITION OF DOOM

BY JENNIFER HALEY

DIRECTED BY JOEL SCHUMACHER

FEATURING THE BATS

NOV 9 — DEC 20





THE FLEA THEATER

NIEGEL SMITH ARTISTIC DIRECTOR **CAROL OSTROW** PRODUCING DIRECTOR

PRESENTS THE NEW YORK PREMIERE OF

NEIGHBORHOOD 3: REQUISITION OF DOOM

BY **JENNIFER HALEY**

DIRECTED BY **JOEL SCHUMACHER**

FEATURING **THE BATS**

JUSTIN AHDOOT, SYDNEY BLAXILL, ALEXANDRA CURRAN, ERIC FOLKS,
ADAM ALEXANDER HAMILTON, ALEX HAYNES, ADELIND HORAN, LINDSLEY HOWARD, KERRY IPEMA,
OLIVIA JAMPOL, CONNOR JOHNSTON, HANK LIN, MADELINE MAHONEY, CRISTINA PITTEr,
BRENDAN SOKLER, KEVIN ARGUS, THOMAS MUCCIOLI

SIMON HARDING SCENIC DESIGN **BRIAN ALDOUS** LIGHTING DESIGN

JESSICA PABST COSTUME DESIGN **GRACE INTERLICHIA** ASSISTANT COSTUME DESIGN

JANIE BULLARD SOUND DESIGN **JOHN MCKENNA** ASSISTANT SOUND DESIGN

J. DAVID BRIMMER FIGHT CHOREOGRAPHY **ZACH SERAFIN** PROP MASTER

DAVID MONTEAGUDO ASSISTANT DIRECTOR **ZACHARY GOLDEN** ASSISTANT TO THE DIRECTOR

ABBIE BAY PRODUCTION STAGE MANAGER **KAILA HILL** ASSISTANT STAGE MANAGER

RON LASKO/SPIN CYCLE PRESS REPRESENTATIVE

CAST

Voiceover	Justin Ahdoot
Makaela	Adelind Horan
Trevor	Alex Haynes
Steve	Eric Folks
Leslie.....	Olivia Jampol
Vicki	Cristina Pitter
Kaitlyn.....	Alexandra Curran
Doug.....	Brendan Sokler
Ryan.....	Justin Ahdoot
Jared	Adam Alexander Hamilton
Madison	Lindsley Howard
Tobias.....	Hank Lin
Barbara.....	Sydney Blaxill
Chelsea	Madeline Mahoney
Blake.....	Connor Johnston
Joy	Kerry Ipema

UNDERSTUDIES

Steve	Kevin Argus
Tobias.....	Thomas Muccioli

SPECIAL THANKS:

South’s, Steven Klein, Kyle Chepulis, Bestype Imaging, Syn Lawn

CREATIVE TEAM

Playwright	Jennifer Haley
Director	Joel Schumacher
Scenic Design.....	Simon Harding
Lighting Design.....	Brian Aldous
Costume Design	Jessica Pabst
Sound Design	Janie Bullard
Fight Choreographer	J. David Brimmer
Props Master	Zach Serafin
Assistant Costume Design	Grace Interlichia
Assistant Sound Design	John McKenna
Assistant Director	David Monteagudo
Assistant to the Director	Zachary Golden
Production Stage Manager.....	Abbey Bay
Rehearsal Stage Manager.....	Kaila Hill

FLEA STAFF

Artistic Director	Niegel Smith
Producing Director	Carol Ostrow
General Manager.....	Joshua Cohen
Company Manager	Erin Daley
Development Associate	Alvin C. Taylor
Marketing Associate.....	Ellie Philips
Audience Development Associate.....	Kayla Sklar
Technical Director	Reece Arthur
Assistant Technical Director.....	Jen Medina
Costume Manager	Holly Chayes
Graphic Designer.....	Bradley Mead/WIIDE
Videographer.....	Crystal Arnette
Photographer.....	Hunter Canning
Accountant.....	Joel Faden & Company, Inc.
Attorney.....	Carol M. Kaplan/Loeb and Loeb
Development Consultant.....	Rachel Colbert
Theater, Technical & Production Consultant.....	Kyle Chepulis
Press Representative	Ron Lasko/Spin Cycle

CAST

(IN ALPHABETICAL ORDER)



JUSTIN AHDOOT (*Ryan, V/O Walkthroughs, u/s Trevor*) NYC: Off-Broadway: *Sleep No More* (Punch Drunk); Off-Off Broadway: *The Mysteries* (The Flea Theater); Regional: *Cymbeline* (Richmond Shakespeare); performed his solo show *Justin versus* at Richmond Triangle Players, and *Uncle Tom: Deconstructed* at the Edinburgh Fringe Festival. TV: “The Americans”, “Blue Bloods”. He also appeared in a short film *Army of God* (Hayden 5) currently awaiting admission to the Sundance Film Festival. In March 2016 he will be involved in *Disgraced* at The Pittsburgh Public Theater. Graduated Virginia Commonwealth University BFA. www.justinahdoot.com



SYDNEY BLAXILL (*Barbara, u/s Leslie*) Recent Flea credits: *Student Body* (dir. Michelle Tattenbaum), *The Nomad* (dir. Liz Swados) and *#serials (Notes to a Ghost)*. Sydney is a co-founding producer of Unabridged Productions with Zachary Infante, having just played Becca while producing the second reading of *In Real Life* (dir. Ashley Brooke Monroe) at Theatre for a New Audience. She is also a founding member of Madcap Repertory Theatre and co-directed (*I think I made you up inside my head.*) for the company’s inaugural season in September. BFA: NYU Tisch (New Studio on Broadway, RADA, Strasberg, and the International Theatre Workshop in Amsterdam).



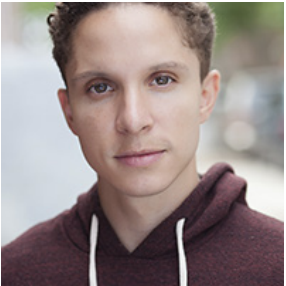
ALEXANDRA CURRAN (*Kaitlyn, u/s Makaela*) is a NYC-based actress. She is very excited to be a part of this project and would like to thank Joel, Jenn, the incredible cast and crew, and the inspiring community of artists at The Flea. The Flea: *Student Body*. Film/TV: “Hawaii 5-0” (CBS), *Femmes*, *Midori* (Columbia Film).



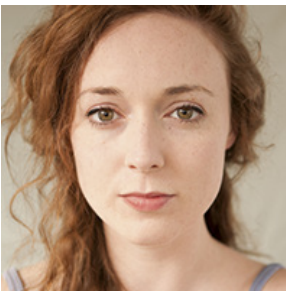
ERIC FOLKS (*Steve, u/s Doug*) Previous Flea credits include *Private Room Number 6*, *Job*, *The Wundelsteipen*, *Just Cause*, *The Flying Latke*. Other New York credits: *The Killer* (TFANA), *The Starter* (The C.O.W.), *We Are Animals* (The Brick), *A Man of No Importance* (Gallery Players). Regional: *columbinus* (American Theater Company), *Singin’ in the Rain* (New London Barn Playhouse), *Mrs. Mannerly* (Dixie Theater), *Don’t Dress For Dinner* (Lake Dillon Theater Co.) Eric is a graduate of Otterbein College.



ADAM ALEXANDER HAMILTON (*Jared*) NY Theater: Student Body by Frank Winters (Flea Theater, dir. Michelle Tattenbaum). TV: Disney/ABC's Diversity Talent Showcase, with Ted Sluberski and Marci Phillips. Training: William Esper Studio, Upright Citizens Brigade, and British American Drama Academy; alma mater, University of Pennsylvania. Adam performs stand-up comedy. He co-created the original comedy pilot, "Couch Potatoes: An Alternative Post-Progressive Neo-Modern Deconstruction of Cinema," and is co-writing an original animated comedy pilot, "Gym Demons".



ALEX HAYNES (*Trevor, u/s Blake, Jared*) made his Flea debut in last year's 5-hour epic, *The Mysteries*. He recently completed a life goal when he became the voice of Talonflame, a flying Pokemon on "Pokemon XY". Alex is a graduate of the University of Kansas and the Upright Citizens Brigade. Stop by his website www.Alex-Haynes.com the next time you're bored at work.



ADELIND HORAN (*Makaela, u/s Madison*) The Flea: *The Old Masters, Smoke, The Mysteries*. Other NY: *The Dubliners: A Quartet* (The Green Space/ NPR), *Unsex Me Here* (Dixon Place), *Equus* (Gallery Players). The tour of her award-winning documentary solo show about mountaintop removal in Appalachia, *Cry of the Mountain* included: United Solo, Judson Church, Edinburgh Fringe (Pleasance), and Capital Fringe. Film: *Goldbricks in Bloom, Flytrap, Silo*, many shorts. Trained in classical acting at LAMDA, UCB alum, BA from Hampshire College. Adelind is co-creating and starring in the original comedy series, "The Pioneers." adelind.com



LINDSLEY HOWARD (*Madison, u/s Chelsea*) has a BFA in Acting from St. Edwards University, in Austin TX. The Flea: *The Mysteries*. Select NY Credits: Soho Rep, Buran Theater, Playwright's Realm, Jewish Plays Project and Columbia Stages. Regional: Austin Shakespeare, Salvage Vanguard, and Mary Moody Northen Theatre. Special thanks to Joel, the cast, and our marvelous crew! lindsleyhoward.com



KERRY IPEMA (*Joy, u/s Vicki*) is an actor and improviser in New York City. Previous shows at The Flea include *Restoration Comedy* and *#serials*. She performs weekly in the interactive Off-Broadway show *Accomplice* and with house team Madam Vice at The PIT. She studied improv with the Upright Citizens Brigade, Shakespeare in Oxford at BADA's Midsummer Intensive, and has a BFA from Indiana University in

Musical Theatre. Favorite roles include Rosalind in *As You Like It*, Lil' Bit in *How I Learned to Drive*, and Laurey in *Oklahoma*. Although originally from the burbs of Chicago, Kerry has lived in Brooklyn since becoming an adult. www.kerryipema.com



OLIVIA JAMPOL (*Leslie, u/s Barbara*) grew up in Costa Rica and studied filmmaking at Harvard. Recent theater credits include: *ANTI* (Barrow Street Theater), *Good Men Wanted* (Ars Nova/ANT Fest), *Tics, or Doing the Deed* (Cutthroat Series, The Flea), *Stranger Odds* (The Wild Project). She has starred in many short film and web projects and is co-creator of Five Minutes Late, a platform for original comedic content. As a filmmaker, she has written and directed a handful of shorts and her film, *JEANNIE*, shot on 16mm, has garnered multiple accolades. She is very excited about being part of this production! www.oliviajampol.com



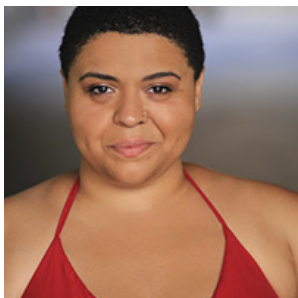
CONNOR JOHNSTON (*Blake, u/s Ryan*) graduated from NYU Tisch this past December, studying at The Meisner Studio, The Classical Studio, and the International Theatre Workshop in Amsterdam. Theatre credits include: *Snow Falling on Cedars* (Portland Center Stage), *Oliver!* (NAAP), *House & Variations* (Dixon Place). Film/TV credits include a co-starring role on NBC's "Grimm", and a supporting role in the independent film, *Something Like Summer*, coming out in 2016. Thanks to friends, family, Joel, and the #N3RDs. www.connorjohnston.com



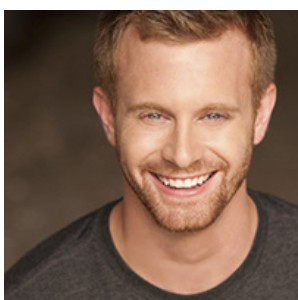
HANK LIN (*Tobias*) has previously appeared at the Flea in *Sarah Flood in Salem Mass* and *#serials@theflea*. He has additionally collaborated with Classic Stage Company, Plastic Theatre, WNYC, the PIT, and Peculiar Works, among others. He is a graduate of Brandeis University.



MADELINE MAHONEY (*Chelsea, u/s Kaitlyn*) is overjoyed to be making her Flea Theater debut as Chelsey! A recent graduate of NYU's Tisch School of the Arts, where she studied at the Stella Adler Studio and Stonestreet Studio, she is a founding member of Cue for Passion Collaborative, where she last appeared in the company's production of *A Midsummer Night's Dream* as Helena. Many thanks to Joel, David, and Zach, and to her ever-supportive parents! www.madelinemahoney.com



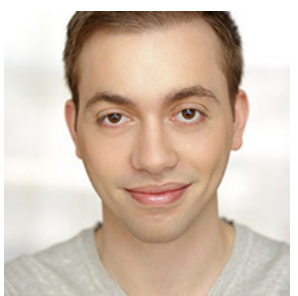
CRISTINA PITTER (*Vicki, u/s Joy*) Cristina is a Brooklyn based storyteller and artist of all mediums. She also has the best laugh ever. Credits include “Community Policing” (“Law & Order SVU”), *Shooting Blanks In The Afterlife* (EST Youngblood Brunch), *WE ARE ANIMALS: F*CKIN* (The PIT), *See With Vision* (Woodshed Collective), *Kapowi-GoGo* (The PIT). Member of The Bats with many a stint done within *#serials@theflea*, ensemble member of Barefoot Theatre Company, and recent NBC/PIT Diversity Scholar. BFA Brooklyn College. Feel free to follow her antics on Twitter @isisgypsy or Instagram @lavidagypsy.



BRENDAN SOKLER (*Doug*) is a Brooklyn resident and a proud new member of The Bats. His favorite roles have been Darren in *Happily After Ever*(Edinburgh,59E59,Signature) Hamlet in *Hamlet*(Chashima/Spontaneous Shakespeare Players), CB in *Dog Sees God*(The Barrow Group), and of course this one. Brendan got his BFA in Acting at the University of Miami in Florida...not Ohio. He has also trained at Shakespeare and Company, UCB, Scott Freeman Studios, and The Barrow Group.



KEVIN ARGUS (*u/s Steve*) is excited to be a part of *Neighborhood 3: Requisition of Doom*! Originally from Indiana, Kevin performed with Iowa Summer Rep, Riverside Theatre in the Park, and Notre Dame Shakespeare Festival before moving to NYC. Most recently Kevin was seen in *#serials@the flea*. BA University of Notre Dame. MFA University of Iowa.



THOMAS MUCCIOLI (*u/s Tobias*) is a theatre artist from Sunnyside, Queens. He has produced, directed, performed or developed work at several theatre companies including New Ohio Theater, New Georges, Brooklyn Generator, Paradise Factory, The Flea Theater, Atlantic Stage 2, The Bushwick Starr, Crashbox Theater, The Tank, HIT, Theatre Row (The Samuel French OOB Short Play Festival), lthe claquel, Dirty Blondes, Dixon Place and Fresh Ground Pepper. He is a founding member of Crashbox Theater Company, a member of The Bats and an alum of The Atlantic Theater Company’s conservatory program.

CREATIVE TEAM

JENNIFER HALEY (*Playwright*) is a playwright whose work delves into ethics in virtual reality and the impact of technology on our human relationships, identity, and desire. She won the 2012 Susan Smith Blackburn Prize, a Los Angeles Ovation Award and Drama Critics Circle Award for her play, *The Nether*, which premiered at Center Theatre Group and was subsequently produced at The Royal Court Theatre with Headlong in London. *Neighborhood 3: Requisition of Doom* premiered at the Actors Theatre of Louisville 2008 Humana Festival, and *They Call Her Froggy* was produced in development with Center Theatre Group and American Conservatory Theater. Jennifer’s work has been developed at The Banff Centre, the Sundance Theatre Lab, O’Neill National Playwrights Conference, Lark Play Development Center, Ojai Playwrights Conference, PlayPenn, Page 73, and the MacDowell Colony. She is a member of New Dramatists in New York City and lives in Los Angeles, where she founded the Playwrights Union.

JOEL SCHUMACHER (*Director*) is renowned for his versatility, style and ability to move seamlessly between film genres with equal popular success and critical acclaim. He began his film career as a costume designer for such legendary directors as Woody Allen (*Sleeper*, *Interiors*) and Herbert Ross (*The Last of Sheila*), before making his own name as a screenwriter with *Sparkle* and *Car Wash*. After cutting his teeth directing two television movies, Joel made his feature film directorial debut on *The Incredible Shrinking Woman* in 1981. His career soon took off with such iconic fare as *St. Elmo’s Fire* and *The Lost Boys*, followed by other successes – *Cousins*, *Flatliners*, *Dying Young*, and *Falling Down*. He would go on to direct film versions of two best selling novels by John Grisham (*The Client* and *A Time to Kill*) as well as two installments of the blockbuster Batman film series, *Batman Forever* (at the time, the #1 box office opening of all time, with Jim Carrey as ‘The Riddler’) and *Batman & Robin*. As his career entered the 21st century, Joel brought audiences the films *8MM*, *Flawless* (which he also wrote), *Tigerland*, *Phone Booth*, *Bad Company*, *Veronica Guerin*, *The Number 23*, and *Trespass*. In 2004 he adapted Andrew Lloyd Webber’s hit musical, *The Phantom of the Opera*, for the screen. The film was nominated for three Academy Awards and a Golden Globe for Best Musical

or Comedy. *Twelve*, based on the groundbreaking novel by Nick McDonell, was honored as the closing night presentation of the 2010 Sundance Film Festival. Since then, Joel returned to television, directing two episodes of the Emmy-nominated Netflix series “House of Cards”, starring Kevin Spacey and executive produced by David Fincher. Most recently, Joel acted as Executive Producer on *Do Not Disturb: Hotel Horrors*, a true-crime series for Investigation Discovery.

SIMON HARDING (Scenic Design) is an award-winning designer for live performance. He has designed nationally and internationally for theater, dance, and performance art work. Harding was a co-founder and the resident designer for SaBooge Theatre, designing all of their productions including the critically acclaimed shows *Hatched*, *Fathom*, and *Every Day Above Ground*. Upcoming/Recent: *Up and Away* (Trusty Sidekick), *BAM Poetry Project* (BAM), *Custodians of Beauty* (Palissimo). www.simonhardingdesign.com

BRIAN ALDOUS (*Lighting Design*) has been with the Flea since its inception. Plays he’s designed here include Kate Robin’s *I See You*, Hamish Linklater’s *The Vandal*, *Future Anxiety* by Laurel Haines, Bathsheba Doran’s *The Parent’s Evening*, and A.R. Gurney’s *Post Mortem*, *Heresy* and *Mrs. Farnsworth*. Other NYC theatres he has designed at include Signature, MCC, Playwrights’ Horizons and Dixon Place. He is resident designer for Symphony Space, on the board of Triskelion Arts and teaches at CCNY.

JESSICA PABST (*Costume Design*) Broadway; *The Heidi Chronicles*. At the Flea: *She Kills Monsters* (Drama Desk nomination), *The Great Recession*, *Office Hours*, *Love Stories*. Recent Off-Broadway: *Kill Floor* (Lincoln Center); *King Liz* (Second Stage Theatre); *The Qualms*, *Grand Concourse*, *Pocatello*, *Assistance*, *The Whale* (Lucille Lortel Award)(Playwrights Horizons); *The Nether* (MCC Theater); *I’m Going to Pray for You So Hard* (Atlantic Theater Company); *Fortress of Solitude* (Public Theater); Many productions with Manhattan Theater Club, The Rattlestick Theatre, Clubbed Thumb. Regionally; Williamstown Theatre Festival

GRACE ELIZABETH INTERLICHIA (*Assistant Costume Design*) is an independent professional specializing in costumes, wardrobe, hair, and makeup. She has

contributed to a variety of Manhattan based theatre and film projects, most recently working as Assistant Costume Designer for off-Broadway theatre companies including Second Stage Uptown, Primary Stages, Ars Nova, and the Claire Tow at Lincoln Center. Grace was also Wardrobe Supervisor for Ars Nova’s productions of *Small Mouth Sounds* and *Jacuzzi*. Grace is a graduate of the International Theatre Program at the University of Rochester.

JANIE BULLARD (*Lighting Design*) Recent: *DISGRACED* at The Goodman (associate), *What I Did Last Summer* with The Signature Theatre Company and Assistant Sound Design for *Hand To God on Broadway*. Off-Broadway: Rattlestick Playwrights Theater, Cherry Lane Theatre, The Flea, Ensemble Studio Theatre, Flux Theatre Ensemble, Sonnet Repertory Theatre, The York Theatre Company, Lesser America, Rising Phoenix Rep. Janie was the recipient of the USITT/LDI Rising Star Award for 2014, and was named an Indie Theatre Person of the Year for 2013. She also received 3 Best Sound Design nominations for the 2014 NYIT awards for *Jane The Plain*, *Pirira*, and *Sans Merci*. Janie received her MFA in Theatre Sound Design from the North Carolina School of the Arts. www.janiebullard.com

JOHN MCKENNA (*Assistant Lighting Design*) hasn’t given me a bio. So here’s some placeholder text. Talking about theater. Talking about art. Talking about credits. I’ve worked here and here and there. And over there as well. Here are more words so that I can space things out. Spacing spacing spacing. Words words words. Spacing spacing spacing. Words words words. Spacing spacing spacing. Words words words. Spacing spacing spacing. Words words words.

J. DAVID BRIMMER (Fight Director, Fight Master, SAFD) has choreographed some stuff (Broadway: *Spring Awakening*, *The Lieutenant of Inishmore*, *Grace*, *Wit*, *Speed the Plow*, NY Premieres: *An Octoroon*, *Gloria*, *Punk Rock*, *We are Proud to Present*, *Bethany*, *Mr. Burns*, *Blasted*, *The Whipping Man*, *Bug*, *Killer Joe*, *Fulfillment*), and worked with some great folks (David Mamet, Sam Shepard, Branden Jacobs-Jenkins, Ethan Coen, Conor McPherson, Martin McDonough, Tracy Letts, Kenneth Lonergan, Neil LaBute, Ken Russell, Franco Zeffirelli). “Walk cheerfully over the world, answering that of God in everyone.” G. Fox

ZACH SERAFIN (*Props Master*) Zach is a scenic designer/carpenter/props master/artist/maker, who holds a Bachelor of Arts degree from Buffalo State College. Currently he is the resident set designer for Red Monkey Theater Group at Mount St. Vincent College in the Bronx. This is his first gig with the Flea and he has previously propped shows at Rattlestick Playwrights Theater. For more info please visit www.zachserafindesigns.com.

DAVID MONTEAGUDO (*Assistant Director*) is a brooklyn-based director and producer. He has developed and produced work with The Flea, The Atlantic, Theater for the New City, and Ma-Yi Theaters amongst others. His project *Under the Hood* which melds game theory and theatrical conventions was featured in the 2014 Come out and Play Festival and will be presented as part of The Best Games Festival in Pittsburgh. He is a founding member of State of Play.

ABBEY BAY PRODUCTION (*Production Stage Manager*) This is Abbey's first production at The Flea. Select Recent Productions: *Las Polacas* (GALA Hispanic Theatre), *R&J&Z* (Hard Sparks), *I Like To Be Here* (Theatre 167), *Normalcy* (Theatre East), *My Name is Rachel Corrie* (Culture Project)
Thanks to the cast, crew, and design team. Extra thanks to the most stellar ASM, Kaila. Lots of love to James! It's a beautiful day in the Neighborhood.

KAILA HILL (*Assistant Stage Manager*) is a recent graduate from Otterbein University with a BFA in Theatre: Design/Technology. She has previously worked with the Williamstown Theatre Festival in their 2014 season, the Sanguine Theatre Project Playwright Festival, Hard Spark's *R&J&Z*, The Flea Theater, the Public Theatre, the NYC Fringe Festival, and Half Moon Theatre.

THE FLEA STAFF



Niegel Smith (Artistic Director) is a theater director & performance artist. His theater work has been produced by Classical Theatre of Harlem, HERE Arts Center, Hip Hop Theatre Festival, The Invisible Dog, Luna Stage, Magic Theatre, Mixed Blood, New York Fringe Festival, New York Live Arts, Phoenix Theatre Ensemble, The Public Theater, Summer Play Festival, Todd Theatre and Under the Radar, and his participatory performances have been produced by Abrons Arts Center, American Realness, Dartmouth College, Elastic City, The Invisible Dog, Jack, The New Museum, Prelude Festival, PS 122, the Van Alen Institute and Visual AIDS. He often collaborates with artist Todd Shalom and playwright/performer Taylor Mac.

Smith, a graduate of Dartmouth College, was the associate director of the Tony Award winning musical FELA!, assistant directed the off-broadway production of The 25th Annual Putnam County Spelling Bee and both the Broadway and off-Broadway productions of Tony Kushner's *Caroline, or Change*. He has received residencies, grants and/or fellowships from Brooklyn Arts Council, Brooklyn Arts Exchange, Lower Manhattan Cultural Council, Sundance Theatre Lab, Theater Communications Group, Tucker Foundation, Van Lier Fund and VoxFest. Before surviving high school in Detroit, he grew up in the North Carolina piedmont, fishing with his dad, shopping with his mom and inventing tall-tale fantasies with his two younger brothers.



Carol Ostrow (Producing Director) Carol Ostrow (Producing Director) joined founder Jim Simpson at the helm of The Flea in 2001 and *The Guys* marked her return to Off-Off-Broadway. She was the OBIE-award winning Producing Director of the Classic Stage Company as well as the founder and original Producing Director of The Powerhouse Theater at Vassar, now in its 30th season. In between, she has been an adjunct professor of theater at Vassar College, Chatham College and McGill University. For The Flea, Carol has produced 15 seasons of world premiere productions and has been responsible for the sound management of the theater's increasing programming and budget. She is also overseeing The Flea's capital campaign that will result in a new performing arts center for The Flea to be launched in 2017. (Stay tuned!) Carol is a graduate of Vassar College and the Yale

Drama School. She is a new trustee of Vassar and she also serves on the Board of Advisors of the Yale Drama School. Beyond her alma maters, she is a member of the board of Central Synagogue, the National Psoriasis Foundation, the MacDowell Colony and LAVA, an acrobatic dance collective in Brooklyn. She is also a Wall Street Journal Expert, where she writes on small business for the paper's online edition. Married and the mother of four incredible and launched young adults, she and her family count Pittsburgh, London, Montreal and now New York City once again as home.



Joshua Cohen (General Manager) previously worked at Roundabout, holds degrees from Amherst College and NYU/Tisch, and has been a stage manager/lighting designer in downtown modern dance. He is also a writer for the theater, a Jonathan Larson Grant winner whose work includes *The Thirteenth Commandment* (Libra Theater Co., seven NYIT Award nominations, two wins); lyrics, *Keep On Walkin'* (Anna Zornio Children's Theater Playwriting Award); and book/lyrics, *Tamar of the River* (Prospect Theater Co., two Drama Desk nominations; world premiere recording, Yellow Sound Label). He lives in Washington Heights with his wife Anne and two children.



Erin Daley (Company Manager) Prior to The Flea, Erin produced the Eugene O'Neill festival at Arena Stage and spent three years as a coordinator in Los Angeles working in film and commercials. After cutting her teeth as an independent producer and director, Erin is thrilled to have a found a home at The Flea where she can continue to work with exciting and innovative artists. Erin is proud to have graduated from Skidmore College.



Ellie Philips (Marketing Associate) is a native New Yorker with a deep love for both acting and marketing. An alumna of Oberlin College, Ellie has worked as a graphic designer, marketing associate, social media advisor, and press rep with and for a variety of companies and productions, including her alma mater, Boneau/Bryan-Brown, Slightly

Altered States, and Hedgepig Theater Ensemble. She is a proud former-member of the Bats, and is very excited to promote the fantastic work happening at The Flea. www.eleanorphilips.com



Kayla Sklar (Audience Development Associate) Passionate about non-profit theater, Kayla has previously worked at 59E59, Ars Nova, and The Public. She graduated from the University of Georgia with degrees in Digital Marketing and Mass Media, and is proud to have been the Artistic Director of The Thalian Blackfriars, one of UGA's oldest organizations. Having lived in Atlanta for most of her life, she's excited to finally call this wonderful city her home.

Alvin C. Taylor (Development Associate) comes to The Flea Theater from Carnegie Hall's Weill Music Institute where he served as their first Fellow. He holds a Bachelor of Arts degree in Instrumental Music from Mississippi State University and a Masters of Education in Higher Education Administration from The University of Southern Mississippi. He also serves as Program Assistant for Jazz at Lincoln Center's youth music education program, WeBop. Alvin is excited to call New York City and The Flea home. He currently lives in the Upper West Side with his wife, Annie, a lighting designer and production manager.

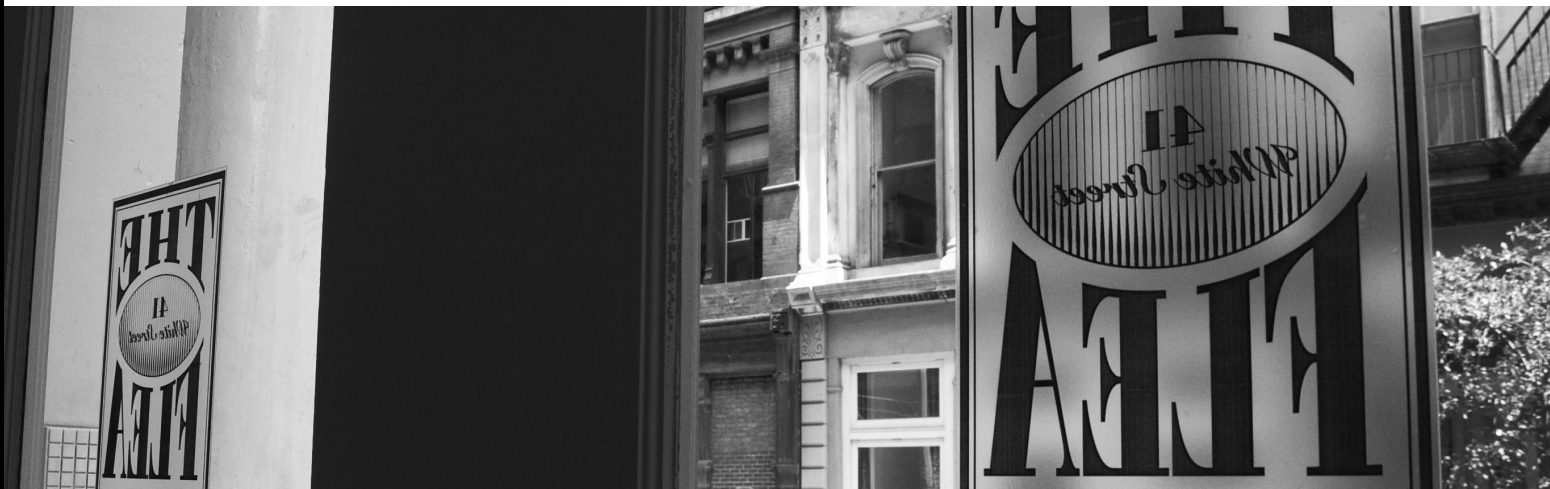
Reece Arthur (Technical Director) has been living and working in New York for the past three years. Past credits include *Our Lady Of Kibeho* and *And I And Silence*, at The Signature Theatre, *The Three Penny Opera* at The Atlantic, and has been a regular electrician for the BAM Fisher venue. I would like to thank The Flea for this opportunity and I'm looking forward to many more.

WHAT IS THE FLEA?

The Flea is our theater: two unique and intimate performance spaces, located here at 41 White Street in Tribeca. But The Flea is also an award-winning producing organization, founded in 1996, that offers more than 250 cutting-edge theatrical and multi-disciplinary performances each year and gives voice to some of the most exciting and innovative writers of our time.

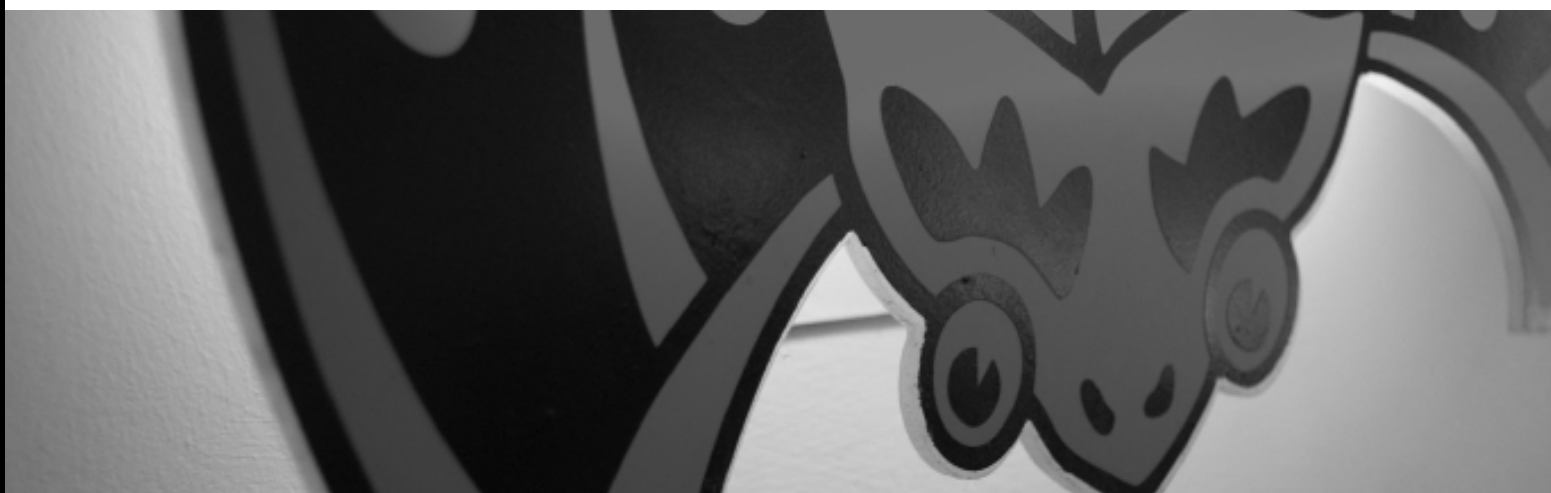
Founded from the purely artistic impulse to create “joyful hell in a small space,” our body of work has earned us accolades from across the globe including two Obie Awards for Best Production, an Otto for Courageous Political Theater, and a Drama Desk Award Special Award for our commitment to adventurous theater. Our 2001 production of *The Guys*, a raw artistic response to the events of 9/11, became a phenomenon that played to sold-out houses for 13 months and quickly cemented our leadership role in the downtown, Off-Off-Broadway and Lower Manhattan communities.

The Flea is a beacon for adventurous audiences and creative artists of all stripes, from the young striver to the legendary veteran. More than 150,000 people have come to The Flea to witness the rare spark created when artists are given free rein to play, experiment and invent—often in ways that the commercial theater can’t support. And it is that spark that fulfills our mission, pure and simple: to embody the spirit of adventure and excitement that has defined Off-Off-Broadway since its inception.



WHO & WHAT ARE THE BATS?

The Bats is our critically acclaimed resident company, cast anew each year from over 1,000 aspiring young actors. Voted “Best Off-Off-Broadway Company to Act In” by Backstage, being a Bat offers young artists the rare opportunity to break into the field with real life experience, performing in front of an audience on a regular basis and working to support The Flea and its visiting artists. All in one night, a Bat may tear your ticket, pour you a drink and rivet your soul to the stage.



WHAT IS OFF-OFF-BROADWAY?

Dating back almost fifty years, Off-Off-Broadway began informally--an alternative, non-commercial environment where new ideas and projects were born out of energetic and often happenstance encounters. Hundreds of well-known artists credit this adventurous and free-spirited time with their falling in love with theater, and getting good at what they do.

Visit www.theflea.org for information on all things Flea!

Find The Flea Theater on Facebook, Tumblr, Twitter & YouTube

THE BOARD OF DIRECTORS

Chair

Linda Schupack

President

Carol Ostrow

Secretary

Douglas Liebhafsky

Treasurer

Joanna Smith

Kyle Chepulis

Michael Graff

Jamie Harris

Wendy Harrison Hashmall

Andrea Miller

Stephanie Morimoto

David Prittie

Nanahya Santana

Jim Simpson

Jeremy Smith

Niegel Smith

Tony Tramontin

Basil Walter

Sigourney Weaver

Katherine White Weinhoff

Stephen Weinroth

Davis Weinstock

Emmeline Wexer

THE FLEA CAMPAIGN

Fifteen years ago The Flea’s founders undertook an artistic experiment, renting an old TriBeCa factory in the wilds of Lower Manhattan and opening the doors to the most iconoclastic and talented artists they could find. Since then The Flea has evolved into an award-winning theater known for presenting the very best of Off-Off-Broadway theater, music and dance.

We have also become an emblem for the resilience of Lower Manhattan, drawing more than 150,000 people to the area since the 9/11 attacks. To continue in that leadership role, we recently purchased a site nearby that is soon to become our permanent new home. Our goal is to continue producing our own intimate and exhilarating work while providing stability to dozens of other artists and performance groups. We are grateful to the following for their lead gifts to the project:

VISIONARIES (\$500K+)

Anonymous
 State of New York
 Andrew M. Cuomo, Governor
 George E. Pataki, Governor
 Empire State Development Corporation
 Julie Shimer, Chairman
 Ford Foundation
 Howard Gilman Foundation
 City of New York
 Michael R. Bloomberg, Mayor
 New York City Council
 Christine C. Quinn, Speaker
 Margaret Chin, Council Member
 James Van Bramer, Council Member
 Borough of Manhattan New York
 Scott M. Stringer, President
 The Lower Manhattan
 Development Corporation
 Carol Ostrow & Michael Graff
 Paul Elston & Frances Beinecke
 A.R. & Molly Gurney
 The September 11th Fund

ANGELS (\$250K+)

Anonymous
 Douglas Liebhafsky & Wendy Gimbel
 LuEsther T. Mertz Advised Fund
 Sigourney Weaver & Jim Simpson

PRODUCERS (\$50K+)

Bloomberg Philanthropies
 Booth Ferris Foundation
 The Irene Diamond Fund

Dormitory Authority
 of the State of New York
 Paul T. Williams, Jr., President
 Walter Nick Howley
 Lower Manhattan Cultural Council
 Dennis Mehiel
 All The Way Foundation
 International Creative
 Management, Inc.
 Liam Neeson
 In Memory of Natasha Richardson
 Omnicom
 Prospect Hill Foundation
 David Richenthal
 Kenes Rakishev &
 Aselle Tasmagambetova
 United Talent Agency
 Katherine & Samuel Weinhoff
 Stephen & Cathy Weinroth
 Davis & Betsy Weinstock

DIRECTORS (\$25K+)

New York State Council on the Arts
 Aby Rosen, Chair
 Lisa Robb, Executive Director
 Jim & Suzy Cameron
 Kyle Chepulis
 Susan Cooper Cronyn
 Linda Schupack & David Good
 Wendy & David Hashmall
 Marilyn & Jeffrey Katzenberg
 Kathleen Kennedy & Frank Marshall
 Massey Knakal Real Estate
 Ed & Patricia Matthews
 Gould Family Foundation

David Prittie
 Daryl Roth & Jordan Roth
 Dan & Sue Rothenberg
 Ted Snowdon
 The Fran & Ray Stark Foundation
 Edward Trach
 Celeste & Tony Tramontin
 Basil Walter

ARTISTS (\$10K+)

Roger Berlind
 André Bishop
 The Lecomte du Noüy Foundation
 Ellen McCourt
 Andrea & George Miller
 Newman’s Own Foundation
 Nanahya Santana & Hume Steyer
 Emma Sheaffer Charitable Trust
 Kent Lawson & Carol Tambor
 Monica & Ali Wambold

PATRONS (\$5K+)

Anonymous
 Robert Eimicke & Roslyn Black
 Lawrence Shainberg & Vivian Bower
 Marshall & Nina Brickman
 Lois Chiles
 Leslee G. Dart
 E.L. & Helen Doctorow
 William H. Draper III &
 Phyllis C. Draper
 Kristin & Gary Friedman
 Jane Gelfman
 Edwin & Lorna Goodman
 The Anrol Foundation
 Mary G. Gurney
 Sylvia G. & Benjamin F. Johnson and
 Sarah East Johnson
 Mark Kaplan
 Kath Lavidge & Edward McKinley
 Cassie Murray & William Plapinger
 Susan Sarandon
 Mike Nichols & Diane Sawyer
 George Sheanshang
 Jeanne S. & Herbert J. Siegel
 Julie & Andrew Stanton
 The Dorothy Strelsin Foundation
 Becky Tesich
 Emily & Lily Wiest
 William Morris Endeavor Entertainment

FRIENDS (\$1K+)

Marla Mayer & Chris Ahearn
 Robert & Betsy Barbanell
 Agnes Martin Barley
 Tom & Meredith Brokaw
 Arthur H. Brooks
 David C. Bryan
 Beth Burnam
 Arthur & Linda Carter
 Michael J. Chepiga &
 Pamela Rogers Chepiga
 in honor of Kathy White
 Marya Cohn
 Al & Roma Connable
 Blythe Danner
 Robert L. Denton
 Arlene Donovan
 John & Karen Erickson
 Juliet & Michael Patsalos-Fox
 Mr. & Mrs. John Galen
 Joseph F. Godfrey & Keith Halstead
 James & Toni Goodale
 Sarah C. Goodyear
 Jane Whitney Gruson
 Christopher Bumcrot & Evelyn R. Gurney
 Lynne Halliday & B.H. Barry
 Robert & Marilyn Harbage
 Patrick Herold
 Fenita Bilgoraj Heyman
 Cindy & Alan Horn
 Lise Jeantet
 Emily F. Johnson
 Marsha Berkowitz & Wayne Kabak
 Marianne & David Kaplan
 Jerome B. Kauff
 Stephen & Marina P. Kaufman
 Louise Lamphere
 in honor of Basil Walter
 Claire & David Lane
 Harry Moses & Randy Lehrer
 Jerry Levine & Nina Tassler
 Paige & Nicky L’Hommedieu
 Kate H. Marber
 Israela Margalit
 Julian Mazor
 Michael Miller
 Robert & Evelyn Miller
 Susan Monserud & Ric Sonder
 Bernard W. Nussbaum
 Pakula Productions, Inc.

Gilbert Parker
 David B. Pearce, M.D.
 Mary Ann & Bruno A. Quinson
 Ivan Reitman
 In Memory of Harold Ramis
 Eleanor Shakin
 Andrew & Julie Stanton
 Holland Taylor
 Deborah Schneider & Jim Tilley
 The Shana Alexander
 Charitable Foundation
 Jonathan Sheffer
 Barry Skovgaard & Marc Wolinsky

Bernadette Speach &
 Jeffrey Schanzer
 Scott & Dhuane Stephens
 Michael & Marjorie Stern
 Bruce Sunstein
 David & Deborah Trainer
 Victoria G. Traube
 Ginny & Bob Walther
 Emmeline Wexer
 Marguerite C. Whitney
 Rachael Worby
 F.A. Zunino

List as of 10/01/15

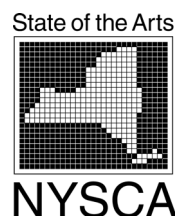
We apologize if you have been left off this list.

Please contact Alvin C. Taylor at alvint@theflea.org for any corrections.

For more information on our Capital Project, please contact Carol Ostrow, (212) 226-0051 x104

The September  **th Fund**

**Lower
 Manhattan
 Cultural
 Council**



THE FLEA I.P.'S

In June of 2009 The Flea launched a unique patron program called The Flea IPs - an elite and dedicated group that helps to make the dreams of The Flea a reality. Flea IPs gain insider access through exclusive events including private talk-backs, intimate artist dinners, master classes and first-look readings. Flea IPs commit their support by generously pledging \$5,000 each year.

Interested? We'd love to make you a Flea IP too!

Please contact Carol Ostrow at 212.226.0051 x104 or carolo@theflea.org for more information.

The Flea proudly salutes our Flea I.P. members and thanks them for their unwavering support:

Barbara Vogelstein
Carol Ostrow & Michael Graff
Edwin A. & Lorna B. Goodman
James Cameron
James L. Melcher
Jeremy Smith
John & Gaily Beinecke

Jonathan Reynolds & Heidi Ettinger
Katherine & Sam Weinhoff
Larry Kanter & Shelly J. London
Lauralee & Walter N. Howley
Linda Schupack
Lois Chiles
Monica & Ali Wambold





Pete & Molly Gurney
 Sahra Lese
 Stephen & Kristina Lang
 Stephen & Cathy Weinroth
 Sue Rothenberg

THE
 FLEA
 I.P.'S

FOUNDATIONS, CORPORATIONS, GOVERNMENT & INDIVIDUAL SUPPORT

\$50,000+

Albert R & Molly Gurney
 Carol Ostrow & Michael Graff
 The National Endowment for the Arts
 The Poses Family Foundation

\$25,000 - \$49,999

International Creative Management, LLC
 The Shubert Foundation
 Venturous Theater Fund of the Tides
 Foundation
 Warburg Pincus

\$10,000 - \$24,999

Celeste & Tony Tramontin
 Douglas Liebhafsky & Wendy Gimbel
 Edwin A. & Lorna B. Goodman
 James Cameron
 Jamie & Jeffrey Harris
 Jeremy Smith
 Katherine & Sam Weinhoff
 Kristina & Stephen Lang
 The Educational Foundation of America
 The Edward & Sally Van Lier Fund
 of the New York Community Trust
 The Fan Fox & Leslie R. Samuels
 Foundation
 The Harold & Mimi Steinberg Charitable
 Trust
 The Janey Fund
 The Prospect Hill Foundation
 Stephen & Cathy Weinroth

\$5,000 - \$9,999

Barbara Vogelstein
 Celeste Guth
 James L. Melcher

John & Gaily Beinecke

John Bernstein
 Jonathan Reynolds & Heidi Ettinger
 Larry Kanter & Shelly J London
 Lois Chiles
 Lucille Lortel Foundation
 Monica & Ali Wambold
 Sahra Lese

\$2,500 - \$4,999

Axe-Houghton Foundation
 Barbara Bell Cumming Foundation
 Esme Usdan
 Jennie L. & Richard K. DeScherer
 Leon Levy Foundation
 Mertz Gilmore Foundation
 Miles Nordin
 The Dorothy Strelsin Foundation
 The John Golden Foundation

\$1,000 - \$2,499

Alberta & Henry Strage
 American Express
 Anna & Bob Kelly
 Barbara & Mark Gerson
 Beau Willimon
 Beth Burnam
 Bradley Radoff
 Cassie Murray & William Plapinger
 Christopher Durang
 Cindy & Alan Horn
 Darlene & Thomas Fridstein
 David Ray
 Dorothy Loudon Foundation
 Dramatists Guild Fund
 Eleanor W. Shakin
 Elizabeth Duggal Taghipour

Friars Foundation
 Jerome & Mary Vascellaro
 Larry Condon
 Marilyn Armel
 Mark Lebwohl
 Nina Tassler & Jerry Levine
 Robert Santos & Linda Carlson
 Souths
 The Edith Meiser Foundation
 The Mary Duke Biddle Foundation
 The New York Stock Exchange Foundation
 Tom & Michelle Bradley
 Virginia Benzak
 Wendy & David Hashmall

\$500+

Bernard & Marcia Kamine
 Betty Robbins
 Bobby & Vicki Freeman
 Bruce Geismar
 Bruce Sunstein
 Carla Solomon & Antonio Magliocco Jr
 Catherine A. Van Emon
 Charbel Tagher
 Deborah & John Evangelakos
 Donna Green & Michael Sternberg

Douglas & Nancy Ostrow
 Dr. Patricia Thomas & Martin Haynes
 Ellen Davis
 George L. Fleming
 Gregory Long
 Henry Finder & Kwame Anthony Appiah
 Jacqueline Brody
 John Kilgore
 Julius Leiman-Carbia & Kyle T. Smith
 Kenneth Levien
 Lee Vance & Cynthia King Vance
 Marc Lesnick & Jane Willkomm
 Marcia & William Pade
 Nate Grubb
 Petrarca
 Steve & Livia Russell
 The Geoffrey Gund Foundation

List as of 11/05/15



We apologize if you have been left off this list.
 Please contact Alvin C. Taylor at
 alvint@theflea.org for any corrections.

FLEA MEMBERS

\$250 Donor

Anonymous (3)
 Clay B
 Robert & Betsy Barbanell
 Linda Blacken
 Nancy and Alan Brenner
 Tracy & Spencer Brog
 Kenneth G. Bartels & Jane Condon
 Sharon M. Connelly
 Joanna Dean
 Sara and Fred Epstein
 Alice Ericsson
 George L. Fleming
 Joe Godfrey & Keith Halstead
 Bruce Goodrich
 Jan M. Guifarro
 John & Diane Haney
 Bert & Laura Hart
 Dr. Daryl Isaacs
 Sarah East Johnson
 Benjamin F. & Sylvia G. Johnson

Carol M. Kaplan
 Irina Kashan
 Seth Meyer
 Cherrie Nanninga & Reno Cappello
 Gilbert Parker
 Laurie & Michael Pepe
 Diana Prechter
 Missie Rennie
 Ellen & Norman Roth
 Kathleen E. Shannon
 Kevin & Caroline Smith
 Bernadette Speach
 Gordon Stewart
 Arthur C. Tatge & Stephanie Garry Tatge
 Anita & Byron Wien
 Rosemary Williams
 Melissa Wohlgemuth

\$100 Contributor

Anonymous (8)
 Edward Albee

Claudia Alcorn
 Abby & Michael Auerbach
 Judith and DeWitt Baker
 Richard & Susan Baldwin
 Gerald G. Bamman & Cecil Mackinnon
 Deborah & Bruce Berman
 Nadia Bernstein
 Peter & Helena Bienstock
 Emma Rajkovic
 Barbara & Gary Bloom
 Jonathan Blum
 Rose Burnett Bonczek
 Sarah Bond
 Jonthan Brady
 Julie Brown & Zachary Morowitz
 George Bunn
 Lucy & David Carson
 Linda Casper
 Ronni Casty
 Susan & Jeffrey Chase
 Debra & Robert Chavez
 Bob Chlebowski
 Melissa Cohen
 Laurie Cohen
 Rachel Colbert
 Paul Cunningham
 Michael Diener
 Sue B. Dorn
 Joe Dowling
 Frank & Helga Doyle
 Susan B. Dugan
 William Faarkas
 Bruce Fagin
 Clarice Feinman
 Martha J. Fleischman
 Charles A. Forma
 Katherine Hanson & James Fraser
 Divyesh Gadhia
 Judith Ginsberg
 Betty and Joshua Goldberg
 Jason Goldstein
 Gordon Gould
 Susan Grant
 Zach Grenier
 Kathleen Halvey
 Mary Hardin
 Joseph Hardy
 Ryan Hart
 Carl Hedin & John Wiecks
 Ellen & David Hirsch
 C&S International Insurance Brokers, Inc.
 Willy Holtzman

Randee & Harris Horowitz
 International Creative Management, LLC
 Gale Jacobsohn
 Katherine Janca
 Emily F. Johnson
 Jeffrey Kalman
 Benjamin Kamine
 Douglas Kreitzberg
 Rosanne Kumins
 Susan Lagomarsino
 Frank & Patricia Lenti
 Bernard & Steffi Liberman
 Charles Linzner
 Mark and Susan Lippitt
 Keith Long
 Murray Luftglass
 Jane Macan
 Mike & Giselle Mahoney
 David & Sheila Manischewitz
 Kate H. Marber
 Don Marcus & Lisa Milligan
 Tom Marvel
 Jeffrey Matchen
 Jill H. Matichak
 The McElhone Family
 Christopher McElroen
 Richard Merbaum
 Elaine Montgomery
 Beth & Ira Nash
 Gudrun Lange & Benjamin Natelson
 Julia Noulin Merat
 Gregg L. Orley & Harriet L. Orley
 William H. Pike & Janice L. Pike
 Marjorie Pollack
 Christopher A. & Lynn B. Ramsey
 Wayne Ransier & Sharon Tomaselli
 Todd & Lori Rosen
 Marjorie Rosenthal
 Jeannette Rossoff
 Wendy & Charlie Roth
 Rabbi Peter J. Rubinstein & Kerry
 Rubinstein
 J. Sadove & J. Genin
 Roberta Lee Scott
 Michael Seel
 Amy Ralston Seife
 Eleanor W. Shakin
 Peter Simon
 Ann & Bill Smith
 Fran Smyth
 Preston Stahly
 Alec Stais

Robert Stuart
 Alvin Taylor
 Craig Troyer
 Phyllis Urman-Klein
 Lisa Van Curen
 Kathryn Wagner
 Robert Walport
 Tobi & Scott Weinstein
 Claire Werner
 Alan Wertheimer
 Edward B. Whitney
 Maury Wind
 Patricia Yarberry-Allen
 Jeremy Zimmer

\$50 Supporters

Anonymous (4)
 Misty Anderson
 Arlette Baker
 Ellie & Bob Berlin
 Susan Bernfield
 Rosemary Bialek
 Frances Strauss
 Michael Borgmann
 Gary Bradley
 Susan Brittingham
 Robert Buck
 Jonathan Caren
 Anjeli Chapman
 Steven Charen
 Evelyn Chen & Johnson Tang
 Paul Cole
 Bob & Debbie Cox
 Albert M. D’Souza & Mariet E.R. D’Souza
 Jack & Johanna Hoey
 Malcolm Duffy
 Diane & Barry Eisenstat
 Annette Ferstenberg & Jesse Goodman
 Andrew Fink
 MK Fischer
 Susan Fleischer
 Helene Foley
 Paul Fontana
 Cly Fowkes
 Henry Fraimow
 Stephen Friedman
 Bill Gill
 Carl Gonzalez
 Adam Snetman & Sarah Graff
 Joanne C. Higgins

Douglas Hillmer
 William Hollingsworth
 Paul & Joanne Howard
 Drama Book Shop
 Buzz & Mary Lou Hutchison
 Steven Ingerman
 Ondree Israel
 Cathy & Andy Jacobs
 Jeffrey Jones
 Elizabeth Kahn
 Samantha Kaplan
 Kaori Kitao
 Ann Krsul
 Mia Leo & Dick Kuczkowski
 Elaine Loeser
 Dayna Lucas
 Gaston Magrinat
 Anita Mandl
 Anne Moradpour
 Karla Morse
 Barbara & Dan O’Connell
 Roberto F. Ortiz
 Brandon J. Ortiz
 David Pasteelnick
 Sam Perkins
 Carole Pesner
 Jody Peterson
 Catherine Powell
 Nancy Reynolds
 MaryAnn & John Routledge
 Susan & Stephen Schneider
 Bernard Schneider
 Debbie & Ralph Schrager
 Mary Schwab
 Ian Smedley
 Jeanne & Steve Stellman
 Mary Voce
 Kevin Waltz
 John Marvin Watts
 Nancy Wender
 Leonora Wiener
 Abby Winship
 Graham Winter
 Elizabeth Witten

List as of 11/04/15

We apologize if you have been left off this list.
 Please contact Kayla Sklar at
 kaylas@theflea.org for any corrections.

FLEA REWARDS

Use your Flea Member Card or ticket stub to take advantage of these special offers from our downtown partners.

Petrarca (34 White St.)
 212-625-2800 / petrarcatribeca.com
 Italian Restaurant & Wine Bar
 Receive a 10% discount on your bill

Da Mikele (275 Church St.)
 212-925-8800 / damikele.com
 Neapolitan-Inspired Italian Restaurant
 Receive a 10% discount on the bill

Souths (273 Church St.)
 212-219-0640 / southsnyc.com
 Neighborhood Bar and Restaurant
 A complimentary glass of wine with the order of an entrée

Billy’s Bakery (75 Franklin St.)
 212-647-9958 / billysbakerynyc.com
 Deserts and Other Baked Goodies
 Buy one cupcake & get the second 1/2 off

Añejo (301 Church St. at Walker)
 212-920-6270 / anejotribeca.com
 Mexican
 A complimentary Plata margarita with any food purchase

Church Street Tavern (313 Church St.)
 212-804-7766 / churchstreettavern.com
 Modern Manhattan Tavern
 Recieve 10% off your bill

TriBeCa Grill (375 Greenwich St.)
 212-941-3900/myriadrestaurantgroup.com
 American Grill
 Enjoy a complimentary sommelier’s choice glass of wine with dinner.

Nish Nush
(88 Reade Street, corner of Church)
 212-964-1318/www.nishnushnyc.com
 Fresh, gourmet hummus, falafel, baklava and more – 10% off with your membership card!

Sun In Bloom (165 Church St.)
 212-791-6700/suninbloom.wordpress.com
 Gluten-Free, Vegan & Raw Food Kitchen in Tribeca & Brooklyn- 10% off with your membership card!

CHECK THEFLEA.ORG OR CALL 212-226-0051 x101 FOR THE LATEST UPDATES & DEALS.

THE FLEA THEATER MEMBERS PROGRAM
Get Special Attention. Support The Flea. Be a Member.
Our theater is tiny and we sell out...fast. Members get guaranteed seats plus exclusive discounts, invites, drinks & inside info! All levels of membership are 100% tax-deductible.

Become a Member

\$25 Member

- No booking or convenience fees
- VIP ticket processing

\$50+ Supporter

- All of the above, plus:
- Exclusive discounts & deals to partner businesses
- First to know of exciting post or pre-show Flea events
- Special thanks in Flea programs

\$100+ Contributor

- All of the above, plus:
- Reserved seating for you and your guests
- Exchange tickets up to 24 hours in advance
- One complimentary drink at our bar before every show

\$250+ Donor

- All of the above, plus:
- Invitations to readings and special Flea events
- One complimentary drink at our bar for your entire party

\$500+ Partner

- All of the above, plus:
- Dinner reservations at select Flea Partner restaurants
- Unlimited complimentary drinks

\$1,000+ Iconoclast

- All of the above plus:
- Invitation to select Opening Night performances, select Flea Fêtes, and cast parties
- Access to Broadway house seats (purchase necessary)

\$2,500+ Vanguard, Flea I.P's

Interested? Email carolo@theflea.org for more information!

CALL 212.226.0051 x101,or MAIL/FAX the form below to join!

I WANT TO JOIN THE FLEA! (Please check membership level below)

☐ \$25 Member

☐ \$50 Supporter

☐ \$100 Contributor

☐ \$250 Donor

☐ \$500 Partner

☐ \$1,000 Iconoclast

NAME (as should be listed)

ADDRESS

CITY, STATE, ZIP

EMAIL PHONE

CREDIT CARD # EXP. SECURITY CODE

Mail this form with a check to THE FLEA MEMBERS PROGRAM, 41 White Street, New York, NY 10013 or fax this form with your credit card information to (212) 965-1808. Questions or concerns? Call us at 212-226-0051 x107.