

PLAYING
NOV 1 - DEC 8

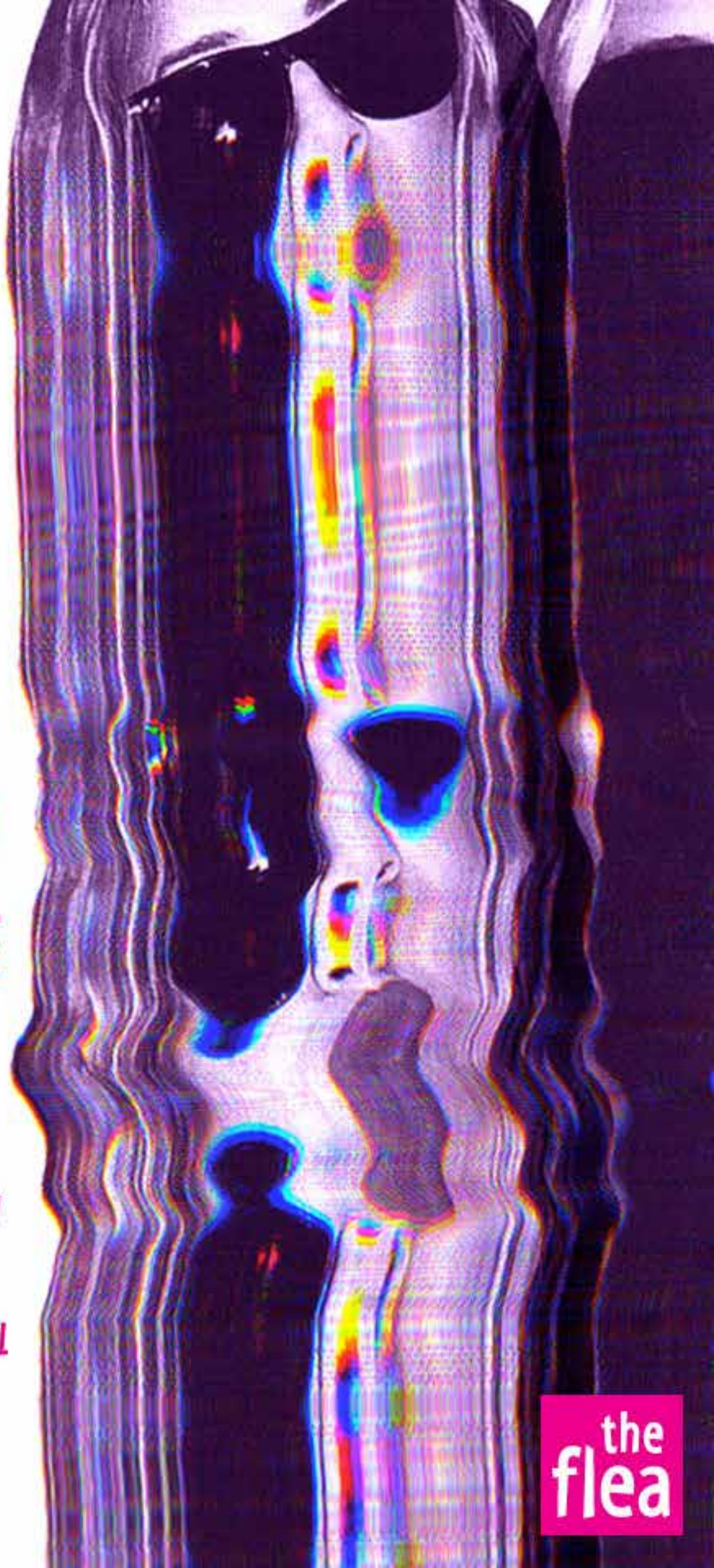
MARY-
KATE
OLSEN
IS
IN
LOVE

WRITTEN BY
MALLERY AVIDON

DIRECTED BY
KRISTAN SEEMEL

FEATURING
THE BATS

the
flea





THE FLEA THEATER

JIM SIMPSON ARTISTIC DIRECTOR **CAROL OSTROW** PRODUCING DIRECTOR

BETH DEMBROW MANAGING DIRECTOR

PRESENTS THE WORLD PREMIERE OF

MARY-KATE OLSEN IS IN LOVE

WRITTEN BY **MALLERY AVIDON**

DIRECTED BY **KRISTEN SEEMEL**

FEATURING **THE BATS**

SCOTT TEDMON-JONES SET DESIGN **JOHN ECKERT** LIGHTING DESIGN
ÁSTA HOSTETTER COSTUME DESIGN **KEVIN BROUDER** SOUND DESIGN
MICHAEL WIESER FIGHT DIRECTION **ANNE HUSTON** STAGE MANAGEMENT

CAST

(IN ALPHABETICAL ORDER)

Grace.....**Katherine Folk-Sullivan**
 Tyler.....**Alex Grubbs**
 Ashley Olsen.....**Kana Hatakeyama**
 Mary-Kate Olsen.....**Christine Lee**
 Soldier.....**Alex Mandell**
 The Amazing Girls.....**Crystal Arnette, Rachel Lin,
 Elizabeth May, Vicki Rodriguez, Bonnie White**

UNDERSTUDIES

Ashley Olsen.....**Crystal Arnette**
 Grace.....**Rachel Lin**
 The Amazing Girls.....**Elizabeth May**
 Mary-Kate Olsen.....**Bonnie White**
 Tyler, Soldier.....**John Paul Harkins**

CREATIVE TEAM

Playwright.....**Mallery Avidon**
 Director.....**Kristan Seemel**
 Set Designer.....**Scott Tedmon-Jones**
 Lighting Designer.....**John Eckert**
 Costume Designer.....**Ásta Bennie Hostetter**
 Sound Designer.....**Kevin Brouder**
 Fight Director.....**Michael Wieser**
 Actor Coach.....**Jennifer McKenna**
 Stage Manager.....**Anne Huston**
 Assistant to the Director.....**Rachel Levens**

SPECIAL THANKS:

Mary-Kate Olsen is in Love was developed by:
 Caitlin Sullivan & The Williams College Summer Theater
 Lab, Monica Hammond & The Attic Theater Co, David Perez &
 Pavement Group, David Herskovits & Target Margin Theater,
 Richard E.T. White & Cornish College of the Arts

Additional Thanks: Merlin Whitehawk, Jeff Bryant, Hans Vermy,
 Jon Regan, Adam Greenfield, and Dan Schneier

FLEA STAFF

Artistic Director.....	Jim Simpson
Producing Director.....	Carol Ostrow
Managing Director.....	Beth Dembrow
Technical Director.....	Liz Blessing
Company Manager.....	Erin Daley
Development Associate.....	Alek Deva
Marketing Associate.....	David Sernick
Audience Development Associate.....	Dominic Spillane
Assistant Technical Director.....	Brandon Stock
Graphic Designer.....	Maria Shaplin
Videographer.....	Crystal Arnette
Photographer.....	Hunter Canning
Costume Manager.....	Josh Boerman
Sarah Flood Costume Manager.....	Sarah Anderson
Theater, Technical & Production Consultant.....	Kyle Chepulis
Accountant.....	Joel Faden & Company, Inc.
Attorney.....	Carol M. Kaplan/Mitchell, Silberberg & Knupp LLP
Development Consultant.....	Rachel Colbert
Press Representative.....	Ron Lasko/Spin Cycle

CAST

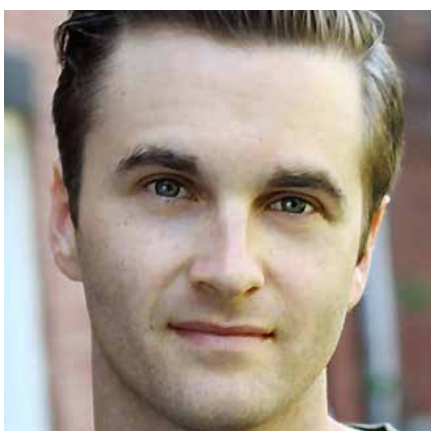
(IN ALPHABETICAL ORDER)



Crystal Arnette (Amazing Girl) has been happy to call The Flea home for the past 3 seasons and is utterly stoked to bring this badass play to life! The Flea Theater: *#serials@theflea*, *Just Cause*, *Looking At Christmas*. Elsewhere: *Certifiable* (FringeNYC), *The House Of Von Macramé* (The Bushwick Starr), *The Consequences* (Wellfleet Harbor Actors Theater), *F#@king Up Everything* (Woolly Mammoth), *Hamlet* (Webster Hall). Films: *You Can't Kill Stephen King*, *Polaroid Girl*, *Requited*, *Dear Lucas*, and *Yesterday Is Here*. When not biking around Bushwick Crystal plays with her band Ladybird and makes films with her production collective Adventure We Can (including the trailers for this show!) BFA: North Carolina School of the Arts. crystalarnette.com @crystalarnette



Katherine Folk-Sullivan (Grace) The Flea: Antigone in *These Seven Sicknesses* (Sean Graney), *Office Hours* (World Premiere by A.R. Gurney), *Future Anxiety*, as well as the world premieres of short plays by Will Eno, Nick Jones and many others. She has participated in readings and workshops at EST, Exit Pursued By a Bear, The Attic, The Assembly and others. B.A. in English from McGill University.



Alex Grubbs (Tyler) The Flea: *a cautionary tail*, *These Seven Sicknesses*, *Passing Through*, *Sin in the City* (The Dirty Blondes), *Acedia* (TheaterlabNYC), *Tea Party* (Columbia's Schapiro Theater) over a dozen plays with *#serials@theflea* written by Chris Dimond,

Krista Knight, Willie Orbison, Christopher Sullivan, Eric Dufault and Tommy Smith. He's participated in readings at Cherry Lane, Naked Angels, Culture Project NYC and Exit Pursued by a Bear. Other credits include: *Ajax*, *Philoctetes* and *Women of Trachis* (Theater of War), *Rum and Vodka* (Outside the Wire), *The 39 Steps* and *Barefoot in the Park* (Heritage Theater Festival) and *The Merchant of Venice* and *Much Ado About Nothing* (Oxford Shakespeare Festival) M.F.A in Acting from the University of Virginia.



John Paul Harkins (u/s Tyler, Soldier) has appeared in over 40 productions in New York City, favorite roles include: Richard II, Horatio, John the Baptist, and Ensemble in Judith Malina's *Here We Are* at the Living Theater. Previous Flea credits include: *Sarah Flood in Salem Mass*, *#serials@theflea*, *Just Cause*, *The Shakes* (Madman, County Paris), *I Hate Fucking Mexicans*. John Paul also works in film, television, voice over, and modeling. He is also lead singer of the 90's grunge cover band 90 Proof.



Kana Hatakeyama (Ashley Olsen) The Flea: *Sarah Flood in Salem Mass*, *The Shakes: The Honest Whore* (dir. Danya Taymor), *The Flying Latke*, *#serials@theflea*. Other NYC Theatre credits include: *The Sonic Life of Giant Tortoises* (La MaMa ETC), Tommy Smith's *Tangerine EP* (The Brick). Film: *Split* (dir. Deborah Kampmeier). A Duke University graduate with a BA in Theater & International Studies, Kana also trained at The Eugene O'Neill Theater Center & Michael Howard Studios and has studied traditional theater in her native country of Japan.



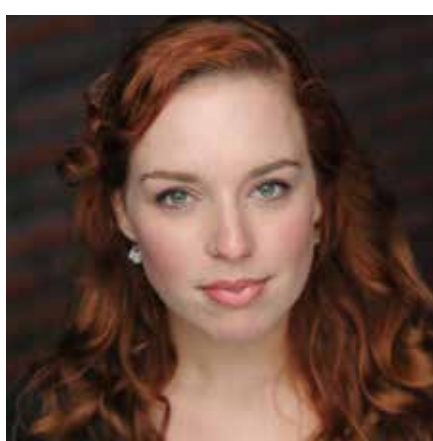
Christine Lee (Mary-Kate Olsen) is a singer, dancer, actor, and a Bat. The Flea Theater: *Sarah Flood in Salem Mass*, *Nectarine EP* (dir. Tommy Smith), *a cautionary tail*, *The Shakes: The Honest Whore* (dir. Benjamin Kamine). New York: *Show Way the Musical* (dir. Melissa Maxwell), Lola Luning's *First Steps* (dir. Andrea Andresakis). *Hecuba* (dir. Joyce Laoagan) Webseries: "Into Girls." www.actorchristinelee.com



Rachel Lin (Amazing Girl) New York: *We Are Samurai* (Marrow's Edge, dir. Ria Dilullo), *Iva: the Myth of Tokyo Rose* (Asian American Arts Alliance, dir. Soriya Chum), *Passing Through* (The Dirty Blondes, dir. Alex Siladi), *Much Ado About Nothing* (Random Access Theater, dir. Casey Cleverly). Readings: Iphigenia in *Aulis* (HotINK! 2013, dir. Lisa Peterson), *The Captain* (Signature Theatre, dir. Josh Hect). B.F.A. from NYU. www.rachelmlin.com



Alex Mandell (Soldier) The Flea: *Restoration Comedy*, *The Shakes: Romeo and Juliet*, *#serials@theflea*; Other NY: *Sleep No More* (Punchdrunk); *It's a Wonderful Life: A Live Radio Play* (Queens Theatre); Regional: *Shakespeare's R&J* (1st Stage); *Macbeth* and *Twelfth Night* (Allentown Shakespeare in the Park); *Marisol* (Boston Center for the Arts); Upcoming Regional: *Pluto* (Forum Theatre), *Awake and Sing* (Olney Theatre); Training: Boston University; LAMDA. Founding member: Marrow. www.alexmandell.com

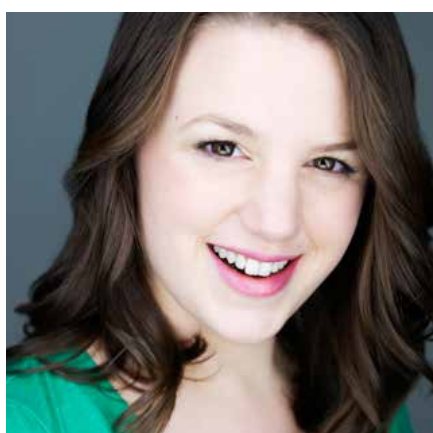


Elizabeth May (Amazing Girl) The Flea Theater: *Sarah Flood in Salem Mass*, *These Seven Sicknesses* and *#serials@theflea*. New York: *Stop the Virgens* at St. Ann's Warehouse, *Missionary in Manhattan* at Theatre for a New City, and *Musical Chairs* at The Brooklyn Lyceum. Regional: *Steel Magnolias* at Triad Stage, *Missionary in Manhattan* at Plays and Players, *The Adrienne*, *Cirque de Vol*, *Elsewhere*, and *Marcus JCCA*. Education: BFA in Acting from The University of North Carolina at Greensboro. Elizabeth is also a co-founder of The Ukulele Orchestra of Great Brooklyn. See more at www.GreatUke.com



Vicki Rodriguez (Amazing Girl) The Flea: *#serials@theflea*. New York: *An Evening of Radio Plays* (The Greene Space, dir. Jim Simpson), *Bloody Lullabies for Brave Women* (MagicFuturebox), *The Mystery Plays* (Secret Theater). B.F.A. from Ithaca College.

www.vickirodriguez.com, @vickisita



Bonnie White (Amazing Girl) is thrilled to be a part of *Mary-Kate Olsen is in Love*, she was last seen on stage at The Flea in *#serials@theflea* and *The Shakes: The Honest Whore*. Other credits include *The Oedipus Project* (New Light Theater Project), *The Last Tree on Easter Island* (Berkshire Theater Festival reading). Bonnie performs often with her improv team The Works, for upcoming performances go to: www.facebook.com/theworksimprov. She is a graduate of Indiana University. www.BonnieRWhite.com

CREATIVE TEAM

Mallery Avidon's play *O Guru Guru Guru, or why I don't want to go to yoga class with you* received its world premiere at the 2013 Humana Festival of New American Plays, and will be produced by Carolina Actors Studio Theatre in November. Her play *queerSpawn* (a commission from the COLAGE foundation) premiered spring 2013, produced by a Collection of Shiny Objects at HERE Arts Center, NYC. Mallery's work has been produced by Pavement Group and Target Margin Theater, among others. Mallery is an alumna of Soho Rep's Writer/Director Lab, co-curator of The Bushwick Starr's monthly reading series and a dramaturge for the company Saint Genet. She holds an M.F.A. in playwriting from Brown University.

Kristan Seemel (Director) has directed premieres of *The Electric Lighthouse* by Ed Himes (The Flea), *MUTT* by Lava Alapai and *The Vespiary* by Matthew Zrebski as well as Northwest regional premieres of Carlos Murillo's *Mimesophobia* and Paula Vogel's *The Long Christmas Ride Home*. Favorite recent revivals include *The Threepenny Opera*, *The Duchess of Malfi* and Gertrude Stein's *Doctor Faustus Lights the Lights* (Portland Dramatic Critics Circle Award for Directing). Kristan has developed plays at Playwrights Horizons/Clubbed Thumb (SuperLab), Target Margin Theater, Brave New World Repertory Theatre and Portland Center Stage. He is an alumnus of the Soho Rep Writer/Director Lab and a Resident Director at The Flea. MFA Directing Brown/Trinity Rep. www.kristanseemel.com

Scott Tedmon-Jones (Scenic Designer) NYC credits include *Rise and Fall of a Teenage Cyberqueen* (Access Theatre), *That Beautiful Laugh* (La MaMa E.T.C.), and *Harry and Pep* (Center Stage NY). Other credits include *The Rape of Lucretia* (Pittsburgh Opera),

Into the Woods (Carnegie Mellon University), and *Deathtrap* and *Later Life* (Snowy Range Summer Theatre). Working with Narelle Sissons, he has been associate designer for Juilliard Drama's 4th Year Repertory since 2012. He has also worked extensively with Dane Laffrey as an assistant and as an associate designer since 2010. MFA: Carnegie Mellon University. www.stjdesign.com

John Eckert (Lighting Designer) Two New Hampshire Theatre Awards (*Measure for Measure*, *Freud's Last Session*), LA Weekly Award (*Iphigenia... A Rave Fable*) Off Broadway: *From White Plains* (Fault Line Theatre). Other New York: *Soulographie*, *How and Why I Robbed My First Cheese Store* (La Mama), *A Crucible*, *Atta Boy* (Perfect Disgrace), *Frogs*, *From The Same Cloth* (Fault Line Theatre), *Wait. She Waits.* (HERE), *Moonlight & Love Songs and The Loves of Mr. Lincoln* (Gayfest NYC), *If [Or When] the Roof Falls In* (Rescue Agreement). Regional: *A Christmas Carol* 2011 & 2012 (Trinity Rep), *This Verse Business* (Merrimack Rep), *From White Plains* (Kitchen Theatre), *What To Wear* with Richard Forman (REDCAT), *Miss Julie* (Sledgehammer Theatre), *Tartuffe* (Boston Court), over 20 shows with Peterborough Players. MFA from CalArts. www.jeckert.com

Ásta Bennie Hostetter (Costume Designer) Recent work includes: *This Great Country* (600 Highwaymen, River to River), *Hotel Colors* (Bushwick Starr), *Pinkolandia* (dir. Jose Zayas, INTAR), *Furry* (William Burke,Jack), *O guru guru guru...* (dir. Lila Neugebauer, Humana Festival), (*) *Inn* (Target Margin Theater, Abrons Arts Center), *Grimly Handsome* (Julia Jarcho, Incubator Arts Project), *Tube* (Van Cougar, Incubator Arts Project). *Glass Menagerie* (dir. Anna Brenner, THEATREWORKS), *Strange Cargo* (Palissimo, PS 122). She received her MFA in Design from CalArts. www.astabennie.com

Kevin Brouder (Sound Designer) is a sound and video designer. Recent sound credits include *And they say Romance is Dead* (Structure XII) and *Sousepaw: A Baseball Story* (17 Frost). He has worked with Target Margin Theater, Pan-Asian Repertory Theater and the Submerged Collective. His last production at The Flea was sound and video design for *Dirty Paki Lingerie* by Aizzah Fatima. Kevin has a BFA from Sarah Lawrence College.

Anne Huston (Stage Manager) The Flea Theater: *a cautionary tail*, *#serials@theflea*, *The Shakes: Romeo and Juliet*, *I Hate Fucking Mexicans*. New York: *The Importance of Being Ernest Hemingway* (M-34), *Ludic Proxy* (The Play Company), *R/evolution* (Tisch School for the Arts), *Curmudgeons in Love* (EST Marathon), *As You Like It* (The New School), *Staging Success* (Atlantic Acting School). Regional: *Avenue Q*, *Chicago*, *39 Steps*, *Boeing, Boeing* (Mason Street Warehouse).

Jennifer McKenna (Actor Coach) is an arts activist and consultant in the theatrical and artistic communities. She has worked directly with the The Flea for the past 5 years to cultivate a resource for the resident company in which the actors can equip and prepare themselves to live fully inspired lives on and off stage in New York City. She is striving to address and progress beyond the starving artist paradigm that so often adheres itself to creative people in our culture today. Jennifer also works privately outside The Flea with creators of varying artistic mediums.

THE FLEA STAFF



Jim Simpson (Artistic Director and Founder) Jim was a child actor in his hometown of Honolulu, as a teenager worked with Jerzy Grotowski in Poland, and holds degrees from Boston University School for the Arts and the Yale Drama School. He's worked at many venues in New York City, Nationally and Internationally. Drama Desk cited for Downtown Adventurous Theater, Two-time OBIE-award winner, National Board of Review Excellence in Filmmaking, and cited for artistic leadership in Downtown New York by the Lower Manhattan Cultural Council.



Carol Ostrow (Producing Director) joined Jim Simpson at the helm of The Flea in 2001 and *The Guys* marked her return to Off-Off-Broadway. She was the OBIE-award winning Producing Director of the Classic Stage Company, where she produced *The Merchant of Venice*, directed by Jim Simpson, the world premiere of Ezra Pound's *Elektra*, directed by Carey Perloff as well as the acclaimed 30th anniversary production of Pinter's *The Birthday Party*, among others. She was also the founder and original Producing Director of The Powerhouse Theater at Vassar, now in its 28th season. In between, she has been an adjunct professor of theater at Vassar College, Chatham College and McGill University. For The Flea, Carol has produced dozens of world premieres and has been responsible for sound fiscal management of the theater's \$1M budget for eleven years. In addition to expanding and professionalizing infrastructure at The Flea, she helped to develop the theater's current 18-member board of directors and has overseen the launch of a patron program that has raised more than \$300,000 in the past three years. She has produced the theater's successful galas and has helped The Flea win prestigious grants from The Andrew W. Mellon

Theater Program, The National Endowment of The Arts, The Lower Manhattan Development Corporation, The Empire State Development Corporation and The Shubert Foundation, among many others. Carol is a graduate of Vassar College and the Yale Drama School. She is a board member of LAVA, an acrobatic dance collective, serves on the President's Advisory Council of Vassar College and the Board of Advisors of the Yale Drama School, and on the executive committee of one of the oldest congregations in New York City, Central Synagogue. Married and the mother of four incredible young adults, she and her family count Pittsburgh, London, Montreal and now New York City once again as home.



Beth Dembrow (Managing Director) has been with The Flea since 2007 working on *Oh, The Humanity and other exclamations* by Will Eno, *Lower Ninth* by Beau Willimon, *Kaspar Hauser* by Liz Swados & Erin Courtney, *Love/Stories (or But You Will Get Used to It)* by Itamar Moses, *The Great Recession*, an evening of short plays by Thomas Bradshaw, Sheila Callaghan, Erin Courtney, Will Eno, Itamar Moses and Adam Rapp, *Girls in Trouble* by Jonathan Reynolds, *Parents' Evening* by Bathsheba Doran, *She Kills Monsters* by Qui Nguyen, *These Seven Sicknesses* by Sean Graney and all other mainstage and downstairs productions. Prior to her arrival, she spent two and half years at Lincoln Center Theater where she worked on all mainstage and second stage productions, including the Tony-Award winning productions, *The Light in the Piazza* and Tom Stoppard's *The Coast of Utopia*. Other management experiences include various Broadway and Off Broadway with Snug Harbor Productions (Steven Chaikelson and Brannon Wiles). Beth holds a B.A. from Cornell University and an M.F.A. in Theater Management and Producing from Columbia University.



Liz Blessing (Technical Director) Liz is happy to have found a home at The Flea Theater. Before coming to the Flea she was the Draftsperson for I. Weiss, creating construction drawings for rigging system installation on Broadway and beyond. Previous to that she was an Engineering Assistant for City Theatrical, Inc, where she helped test the W-DMX system. Liz has a B.S. from The College of William and Mary.



Erin Daley (Company Manager) comes to The Flea after spending last year producing Arena Stage's Eugene O'Neill Festival in Washington D.C. Prior to this; she spent three years as a coordinator in Los Angeles working in film and commercials before her love of theater tore her away. After cutting her teeth as an independent producer and director, Erin is thrilled to have found a home at The Flea where she can continue to work on exciting and innovative new theater. Erin is proud to have graduated from Skidmore College, Class of 2008.



Dominic Spillane (Audience Development Associate) began working with The Flea Theater in 2009 as an actor in *The Great Recession* performing in Sheila Callaghan's *Recess* directed by Kip Fagan, *Classic Kitchen Timer* by Adam Rapp, and *Severed* by Erin Courtney. In 2011 he and partner Stephen Stout created and produced the hit late-night play competition *#serials@theflea*, now in its second year running. As a producer Dominic created the short film "Falling Down" which toured 4 international film festivals, and the one-act festival *Dancing With Myself* at the Working Stage theater in Los Angeles. In 2012 Dominic directed *Bea Arthur and the Knights of the Round Table* by Joe Tracz (Ars Nova's ANT Fest), and *Lighthouse* by Charlotte Miller (Rattlestick Playwrights Theater's TheaterJam). He has also directed short plays by Stacy Davidowitz and Leslye Headland.



David Sernick (Marketing Associate) graduated from Indiana University with a double BA in Political Science and Theatre & Drama along with a Certificate in Arts Administration. From 2009 – 2012 David was the Marketing Associate at Barrington Stage Company where he cultivated younger audiences with new media strategies thanks to a Future Audiences Grant from TCG. David founded Black Swan Theatre Project in Grand Rapids, MI and InPulse Productions in Bloomington, IN where he directed, produced and occasionally acted. Other directing credits include assistant directing at Barrington Stage Company and directing for Barrington Stage's inaugural 10×10 New Play Festival.



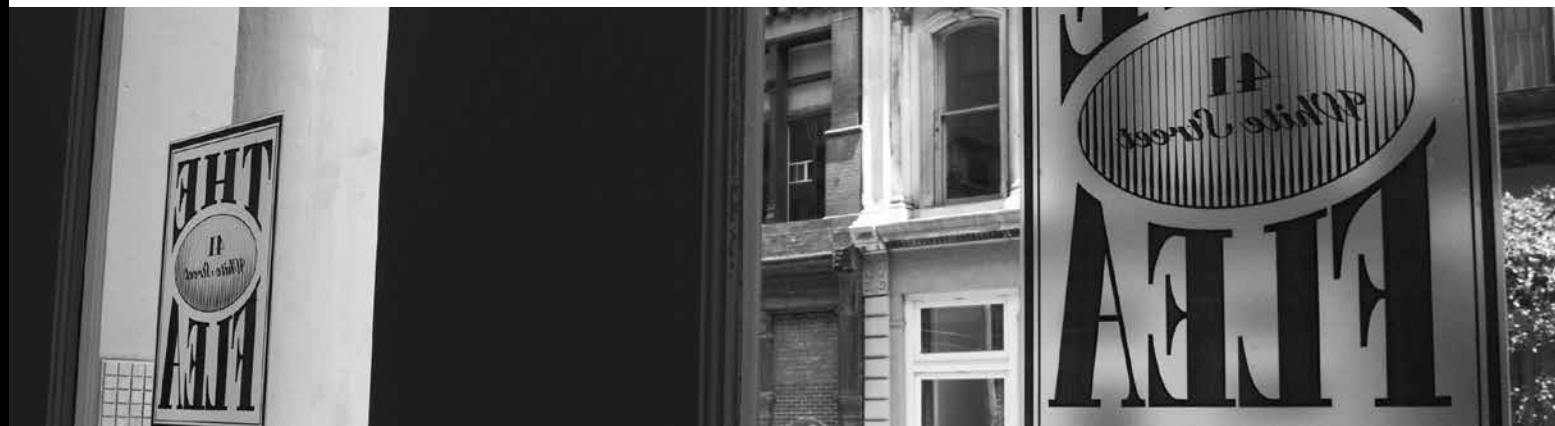
Alek Deva (Development Associate) received a degree in English with a focus in Poetry Writing from the University of North Carolina at Chapel Hill. During his tenure at UNC-CH, Alek worked nearly full time as the Master Electrician and in-house Lighting Designer at the University's world-class Memorial Hall, the main performance venue of Carolina Performing Arts. After working with numerous theater, dance, and music artists from around the world, he decided to make the transition to the other side of the curtain. Alek studied for a year at the University of North Carolina School of the Arts in their Performing Arts Management MFA program, during which time he produced a world premiere percussion and piano performance featuring award-winning percussionist Scott O'Toole and composer/pianist Alicia Willard. He most recently worked at the Weston Playhouse Theatre Company as their Marketing Associate, where he developed a dynamic and successful marketing campaign for world premiere musical *Pregnancy Pact* (by Gordon Leary and Julia Meinwald).

WHAT IS THE FLEA?

The Flea is our theater: two unique and intimate performance spaces, located here at 41 White Street in Tribeca. But The Flea is also an award-winning producing organization, founded in 1996, that offers more than 250 cutting-edge theatrical and multi-disciplinary performances each year and gives voice to some of the most exciting and innovative writers of our time.

Founded from the purely artistic impulse to create “joyful hell in a small space”, our body of work has earned us accolades from across the globe including two Obie Awards for Best Production, an Otto for Courageous Political Theater, and a Drama Desk Award Special Award for our commitment to adventurous theater. Our 2001 production of *The Guys*, a raw artistic response to the events of 9/11, became a phenomenon that played to sold-out houses for 13 months and quickly cemented our leadership role in the downtown, Off-Off-Broadway and Lower Manhattan communities.

The Flea is a beacon for adventurous audiences and creative artists of all stripes, from the young striver to the legendary veteran. More than 150,000 people have come to The Flea to witness the rare spark created when artists are given free rein to play, experiment and invent—often in ways that the commercial theater can’t support. And it is that spark that fulfills our mission, pure and simple: to embody the spirit of adventure and excitement that has defined Off-Off-Broadway since its inception.



WHO & WHAT ARE THE BATS?

The Bats is our critically acclaimed resident company, cast anew each year from over 1,000 aspiring young actors. Voted “Best Off-Off-Broadway Company to Act In” by Backstage, being a Bat offers young artists the rare opportunity to break into the field with real life experience, performing in front of an audience on a regular basis and working to support The Flea and its visiting artists. All in one night, a Bat may tear your ticket, pour you a drink and rivet your soul to the stage.



WHAT IS OFF-OFF-BROADWAY?

Dating back almost fifty years, Off-Off-Broadway began informally--an alternative, non-commercial environment where new ideas and projects were born out of energetic and often happenstance encounters. Hundreds of well-known artists credit this adventurous and free-spirited time with their falling in love with theater, and getting good at what they do.

Visit www.theflea.org for information on all things Flea!

Find The Flea Theater on Facebook, Tumblr, Twitter & YouTube

THE BOARD OF DIRECTORS

Chair

Jamie Harris

President

Jim Simpson

Secretary

Douglas Liebhafsky

Treasurer

Emmeline Wexer

Kyle Chepulis

Robert Eimicke

Paul J. Elston

Michael Graff

Wendy Harrison Hashmall

Andrea Miller

Carol Ostrow

David Prittie

Nanahya Santana

Linda Schupack

Bernadette Speach

Tony Tramontin

Basil Walter

Sigourney Weaver

Katherine White Weinhoff

Stephen Weinroth

Davis Weinstock

THE FLEA CIRCUS CAMPAIGN

Fifteen years ago The Flea's founders undertook an artistic experiment, renting an old TriBeCa factory in the wilds of Lower Manhattan and opening the doors to the most iconoclastic and talented artists they could find. Since then The Flea has evolved into an award-winning theater known for presenting the very best of Off-Off-Broadway theater, music and dance.

We have also become an emblem for the resilience of Lower Manhattan, drawing more than 150,000 people to the area since the 9/11 attacks. To continue in that leadership role, we recently purchased a site nearby that is soon to become our permanent new home. Our goal is to continue producing our own intimate and exhilarating work while providing stability to dozens of other artists and performance groups. We are grateful to the following for their lead gifts to the project:

VISIONARIES (\$500K+)

Anonymous
State of New York
Andrew M. Cuomo, Governor
George E. Pataki, Governor
Empire State Development Corporation
Julie Shimer, Chairman
City of New York
Michael R. Bloomberg, Mayor
New York City Council
Christine C. Quinn, Speaker
Margaret Chin, Council Member
James Van Bramer, Council Member
Borough of Manhattan New York
Scott M. Stringer, President
The Lower Manhattan
Development Corporation
Carol Ostrow & Michael Graff
Paul Elston & Frances Beinecke
A.R. & Molly Gurney
The September 11th Fund

ANGELS (\$250K+)

Anonymous
Douglas Liebhafsky & Wendy Gimbel
Sigourney Weaver & Jim Simpson

PRODUCERS (\$50K+)

The Irene Diamond Fund
Dormitory Authority
of the State of New York
Paul T. Williams, Jr., President
Walter Nick Howley
Lower Manhattan Cultural Council
Dennis Mehiel
All The Way Foundation
International Creative

Management, Inc.
Liam Neeson
In Memory of Natasha Richardson
Omnicom
David Richenthal
Kenes Rakishev &
Aselle Tasmagambetova
United Talent Agency
Katherine & Samuel Weinhoff
Stephen & Cathy Weinroth
Davis & Betsy Weinstock

DIRECTORS (\$25K+)

New York State Council on the Arts
Aby Rosen, Chair
Lisa Robb, Executive Director
Jim & Suzy Cameron
Kyle Chepulis
Linda Schupack & David Good
Wendy & David Hashmall
Marilyn & Jeffrey Katzenberg
Kathleen Kennedy & Frank Marshall
Massey Knakal Real Estate
Ed & Patricia Matthews
Gould Family Foundation
David Prittie
Daryl Roth & Jordan Roth
Dan & Sue Rothenberg
Ted Snowdon
The Fran & Ray Stark Foundation
Edward Trach
Basil Walter

ARTISTS (\$10K+)

Roger Berlind
André Bishop &
the Lecomte du Noüy Foundation

Ellen McCourt
 Andrea & George Miller
 Newman's Own Foundation
 Emma Sheaffer Charitable Trust
 Kent Lawson & Carol Tambor
 Celeste & Tony Tramontin

PATRONS (\$5K+)

Anonymous
 Robert Eimicke & Roslyn Black
 Lawrence Shainberg & Vivian Bower
 Marshall & Nina Brickman
 E.L. & Helen Doctorow
 William H. Draper III &
 Phyllis C. Draper
 Kristin & Gary Friedman
 Jane Gelfman
 Edwin & Lorna Goodman
 The Anrol Foundation
 Mary G. Gurney
 Sylvia G. & Benjamin F. Johnson and
 Sarah East Johnson
 Mark Kaplan
 Edward McKinley
 Susan Sarandon
 Mike Nichols & Diane Sawyer
 George Sheanshang
 Jeanne S. & Herbert J. Siegel
 The Dorothy Strelsin Foundation
 Becky Tesich
 Emily & Lily Wiest

FRIENDS (\$1K+)

Marla Mayer & Chris Ahearn
 Robert & Betsy Barbanell
 Agnes Martin Barley
 Tom & Meredith Brokaw
 Arthur H. Brooks
 David C. Bryan
 Beth Burnam
 Arthur & Linda Carter
 Michael J. Chepiga &
 Pamela Rogers Chepiga
 in honor of Kathy White
 Marya Cohn
 Al & Roma Connable
 Blythe Danner
 Robert L. Denton
 Arlene Donovan
 John & Karen Erickson
 Mr. & Mrs. John Galen
 Joseph F. Godfrey & Keith Halstead

James & Toni Goodale
 Sarah C. Goodyear
 Jane Whitney Gruson
 Christopher Bumcrot & Evelyn R. Gurney
 Lynne Halliday & B.H. Barry
 Robert & Marilyn Harbage
 Patrick Herold
 Fenita Bilgoraj Heyman
 Cindy & Alan Horn
 Emily F. Johnson
 Marsha Berkowitz & Wayne Kabak
 Marianne & David Kaplan
 Jerome B. Kauff
 Stephen & Marina P. Kaufman
 Louise Lamphere
 in honor of Basil Walter
 Claire & David Lane
 Harry Moses & Randy Lehrer
 Jerry Levine & Nina Tassler
 Paige & Nicky L'Hommedieu
 Kate H. Marber
 Israela Margalit
 Julian Mazor
 Michael Miller
 Robert & Evelyn Miller
 Susan Monserud & Ric Sonder
 Bernard W. Nussbaum
 Pakula Productions, Inc.
 Gilbert Parker
 David B. Pearce, M.D.
 Mary Ann & Bruno A. Quinson
 Holland Taylor
 Deborah Schneider & Jim Tilley
 The Shana Alexander
 Charitable Foundation
 Jonathan Sheffer
 Barry Skovgaard & Marc Wolinsky
 Bernadette Speech &
 Jeffrey Schanzer
 Scott & Dhuane Stephens
 Michael & Marjorie Stern
 Bruce Sunstein
 David & Deborah Trainer
 Victoria G. Traube
 Ginny & Bob Walther
 Emmeline Wexer
 Marguerite C. Whitney
 Rachael Worby
 F.A. Zunino

List as of 11/1/13

We apologize if you have been left off this list.

Please contact Alek Deva at alekd@theflea.org for any corrections.

For more information on our Capital Project, please contact Carol Ostrow, (212) 226-0051 x104



THE FLEA I.P.'S

In June of 2009 The Flea launched a unique patron program called The Flea IPs - an elite and dedicated group that helps to make the dreams of The Flea a reality. Flea IPs gain insider access through exclusive events including private talk-backs, intimate artist dinners, master classes and first-look readings. Flea IPs commit their support for three full years, generously pledging \$5,000 each year.



Interested? We'd love to make you a Flea IP too!

Please contact Carol Ostrow at 212.226.0051 x104 or carolo@theflea.org for more information.

The Flea proudly salutes our Flea I.P. members and thanks them for their unwavering support:

- Catherine Adler
- Trey Beck
- John & Gaily Beinecke
- Lois Chiles
- Larry Condon
- Frances Beinecke & Paul Elston
- Jonathan Reynolds & Heidi Ettinger
- Douglas Liebafsky & Wendy Gimbel
- Lorna B. & Edwin A. Goodman
- Carol Ostrow & Michael Graff
- A.R. & Molly Gurney
- Celeste Guth
- Wendy & David Hashmall
- Lorie & Nick Howley
- Ellen M. Iseman
- Eleanora & Michael Kennedy
- Sahra Lese
- Larry Kanter & Shelly J London
- Andrea & George Miller
- Elizabeth Olofson
- Dan & Sue Rothenberg
- Stephen & Livia Russell
- Jeremy T. Smith
- Nanhya C. Santana & Hume Steyer
- Tony & Celeste Tramontin
- Katherine & Sam Weinhoff
- Stephen & Cathy Weinroth
- Davis & Betsy Weinstock

FOUNDATIONS, CORPORATIONS, GOVERNMENT & INDIVIDUAL SUPPORT

\$50,000+

The National Endowment for the Arts
The Poses Family Foundation

Fred & Nancy Poses

David Good & Linda Schupack
The Dorothy Strelsin Foundation

\$25,000 - \$49,999

Catherine Adler
Bloomberg Philanthropies
New York City Department of
Cultural Affairs
Warburg Pincus

\$1,000 - \$2,499

Anonymous
Gay & Harry Abrams
Abrams Artists Agency
Claudia Baez
The Barbara Bell Cumming Foundation
Nancy & Alan Brenner
Beth Burnam
Ellen Davis
Jonathan & Margot Davis
Dramatists Guild Fund
Elizabeth B. Elston
The Friars Foundation
Thomas & Darlene Fridstein
Jane R. Gelfman
Mark & Madeline Lebwohl
The Mary Duke Biddle Foundation
Shelly & Neil Mitchell
William Plapinger & Cassie Murray
The New York Stock Exchange Foundation
Nick & Julie Sakellariadis
Robert Santos & Linda Carlson
Harry Stout
Cynthia King Vance & Lee Vance

\$10,000 - \$24,999

Anonymous
JPMorgan Chase Foundation
Douglas Liebhafsky & Wendy Gimbel
The Prospect Hill Foundation
Dan & Sue Rothenberg
The Fan Fox &
Leslie R. Samuels Foundation
The Shubert Foundation
Nanahya C. Santana & Hume Steyer
The Harold & Mimi Steinberg Charitable Trust
Katherine & Samuel Weinhoff
Stephen & Cathy Weinroth
The Edward & Sally Van Lier Fund
of the New York Community Trust

\$5,000 - \$9,999

Trey Beck
Larry Condon
Paul J. Elston & Frances Beinecke
The Ettinger Foundation
Edwin & Lorna Goodman
Wendy & David Hashmall
Lorie & Nick Howley
Ellen M. Iseman
in honor of Helen Frankenthaler
Larry Kanter & Shelly J. London
The Lucille Lortel Foundation
Andrea & George Miller
The New York State Council on the Arts
Celeste & Tony Tramontin

\$500+

Anonymous
Marita & Michael Altman
Lynn & Mark Angelson
Virginia Arcari
Suzanne Bales
Robert & Betsy Barbanell
Jacqueline Brody
George & Jane Bunn
Jean Fitzgerald
Christopher Flinn & Daniela Del Boca
Fred & Susan Foster
Bobby & Vicki Freeman
Andrew Frey
Steven & Donna Gartner
Mia Goldman & Michael Rotblatt
Geoffrey & Sarah Gund
Robbi D. Holman
Lise Jeantet
Mr. & Mrs. Bernard Kamine
Carol Kaplan
John Kilgore
Jame Willkomm & Marc Lesnick
Gregory Long

\$2,500 - \$4,999

The Angelson Family Fund
The Axe-Houghton Foundation
James Cameron
Richard & Jennie DeScherer
Robert Eimicke & Roslyn Black
The John Golden Fund
The Walter & Elise Haas Fund
Stephen & Kristina Lang
The Frederick Loewe Foundation

LuEsther T. Mertz Advised Fund
 Murray A. Luftglass
 Caroline McCandless
 Sherry McCutcheon
 Jane Read Martin & Douglas McGrath
 Stephen McNabb
 Payne Middleton
 Elaine Montgomery
 Laurence Hazell & Mimi Quillin
 Mitchell Rabinowitz & Roberta Weiss
 Steven Rand
 Benjamin & Alice Reiter
 Saluggi's
 Lyris Schonholz

Eric Seiler & Darcy Bradbury
 Gretchen Shugart
 South's Bar & Restaurant
 Eve Stuart
 Charbel & Aida Tagher
 Elizabeth Duggal Taghipour
 Stephanie Garry & Art Tatge
 Edward Trach
 Mary & Jerome Vascellaro
 Emmeline Wexer
 Ellen Freudenheim & Daniel Wiener
 Dan & Cammy Zamlong

List as of 11/1/13



We apologize if you have been left off this list.
 Please contact Alek Deva at alekd@theflea.org for any corrections.

FLEA MEMBERS

\$250 Donors

Anonymous (1)
 Richard & Susan Baldwin
 Catherine Cahill & William Bernhard
 Ronni J. Casty
 Linda & Tom Cauchois
 Frank & Helga Doyle
 Margaret Einhorn & Machel Lasky
 Sara & Fred Epstein
 Alice Ericsson
 John & Deborah Evangelakos
 Richard V. Girodano & Khairul E. Astwood
 Mrs. James B. Gubelman
 Bob Honsinger
 The Jacoby Family
 Wayne S. Kabak
 Virgie & Walter Klein
 Pat & Nathan Kornfeld
 Judith Krupp
 Kenneth D. Levien
 Alison Mandelker Burnett
 David & Sheila Manischewitz
 Kate Marber & Robert Norman
 Barbara & Alan Marks
 Peg McGetrick
 Seth J. Meyer & Nathaniel V. Speer
 Judy Myers & Ira Schwartz
 Douglas, Nancy, & Molly Ostrow
 Kent Cole & Diana Prechter
 Missie Rennie
 Lisa Roumell & Mark Rosenthal
 Ellen & Norman Roth
 Laurie Sackler
 Barbara J Smith & Lance Goberman
 Robert Stein
 Julie & Jim Tynion
 Chris Vroom
 Susan Wilen
 Melissa Wohlgemuth

\$100 Contributors

Anonymous (4)
 Edward Albee
 Joseph Allen
 Marilyn Armel
 Peter & Susan Axelrod
 Gerry Bamman
 Doug & Sarah Banker
 Judy & Ennius Bergsma
 Barbara & Gary Bloom
 John J. Bolebruch
 Sarah Bond
 Lesley Broder
 JuLondre Karlveon Brown
 David Budinger
 Jean Bundy
 Jane & George Bunn
 Christopher Cayaba
 Susan & Jeffrey Chase
 Mr. & Mrs. Coleman Conkling
 Douglas Cramer
 David Dallon
 Bonnie Milligan
 Laurie DeGrazia
 Judy & Ira Dembrow
 Sue B Dorn
 M. Burton Drexler
 Laurel Elliot
 Star Eonnet
 Clarice Feinman
 George Fleming
 Ken & Kay Folks
 Charles A. Forma
 James Fraser & Katherine Hanson
 Stephen Friedman
 Henry Frommer & Cheryl Tuttle
 Jack Gangi
 Barbara & Mark Gerson
 Betty & Joshua Goldberg

Randi Goldmann & Marty Forman
 Jason Goldstein
 Mary & Gordon Gould
 Emily C. Graff
 Bonnie Graff
 Anabel Graff
 Meaghan Gragg
 Sean Graney
 Kathleen A. Halvey
 Marc Happel
 Cynthia Harris
 Ryan Hart
 Anne & Gordon Herralld
 Blake & Catherine Holden
 Randee & Harris Horowitz
 Jim & Gale Jacobsohn
 Ashley Jacobson
 Katherine Janca
 Sarah East Johnson
 Gene Kilik
 Ralph Kleinman
 Susan Klock
 Wendie & Bud Kroll
 Susan Lagomarsino
 Billy Lazarus
 Ann Leary
 Jane Huey-Chai Lin
 Mark & Susan Lippitt
 Carla Lord
 Murray Luftglass
 Tom Marvel
 Stephen & Carolyn McCandless
 Loretta McCarthy
 Nello & Mary McDaniel
 John McDermott
 Andrew & Su-Ellyn McMaster
 Judith & Richard Merbaum
 Judith Milhous
 Harriet Millan
 Thomas Molner
 Elaine Montgomery
 Daria & David Moore
 Seth Moskowitz
 Eve Mykytyn
 Drs. Benjamin Natelson & Gudrun Lange
 Peter Chance
 Nelle Nugent
 Deborah O'Brien
 David & Siobhan Olson
 Harriet & Gregg Orley
 Roberto F. Ortiz
 Frances Pandolfi
 Judy & Gary Pasquinelli
 Christopher Patsiga
 Miriam Poser
 Elizabeth Propp
 Sarah H. Reines
 Richard & Mary Ronan

Todd & Lori Rosen
 James Rothman
 Peter & Lee Scott
 Amy Ralston Seife
 Eleanor Shakin
 Kathleen Shannon
 Philip Smith
 Marcia L Smith
 Dainni Spalding
 Preston Stahly
 Alec Stais
 Jeanne & Steven Stellman
 Thomas Synan
 Maria & Richard Thulin
 Jay Topkis
 Rahul Tripathi
 Indiana Market & Catering
 Douglas Ver Mulm
 Claire S. Werner
 Edward B. Whitney
 Rita Wolf, Kiran & Anjeli Chapman
 Elaine Yaffe
 Jeremy Zimmer

\$50 Supporters

Anonymous (6)
 Toshi Abe & Nancy Hall
 Joseph Ackerson
 Jeanette & Robert Aginian
 Marie & Harold Alexander
 Misty Anderson
 Judith & DeWitt Baker
 Stephanie D'Alton Barrett
 Carolyn Benbow
 Kenneth Brooks Wells & M. Christina Benson
 Margaret Berkes
 Elinor & Robert Berlin
 Nadia Bernstein
 Helena & Peter Bienstock
 Vincent Bivona
 Linda Blacken
 Judith & Alexander Blanton
 Jay & Dena Bock
 Christine Boeke
 Anna Bogyay
 Peter Brew
 Leslie Susan Brittingham
 Sheldon & Carolyn Bross
 Joan Budish
 Bridget K. Burke
 Carol & Allan Carlton
 Steven Charen
 Elizabeth Cho & Lucas Dixon
 Tom Costello
 John & Ann Costello
 Susan Crowe
 Marina Cruz
 Leslie Danoff

Kim Davies
 Emma Davis
 Alek Deva
 Mickey Diener & Lisa Bennett
 Charles Dische
 Martin Domb
 Josh & Kerry Dorf
 Diane & Barry Eisenstat
 Judith Ferber
 Annette Ferstenberg
 M. K. Fischer
 Paul Fontana
 Joyce Friedland
 Elizabeth Garnsey
 Walter Gilbert
 Marlowe Holden
 Alan & Susan Guma
 Jon Haber & Bonnie Levin
 Elizabeth Littlefield
 Robert & Jodi Harrison
 Walton Deva & Laurie Fendell
 Anne Herman
 Beverly Hodgson
 James Hoffman
 Donna Hogben
 John Holden
 Nina Horowitz
 Lily Hou
 Allen Hubby
 Alasdair Hunter
 Stuart N. Hutchison
 K.C. Hyland
 Benjamin Kamine
 Samantha Kaplan
 Andrea Kaplan
 Kaori Kitao
 Mia Leo & Dick Kuczkowski

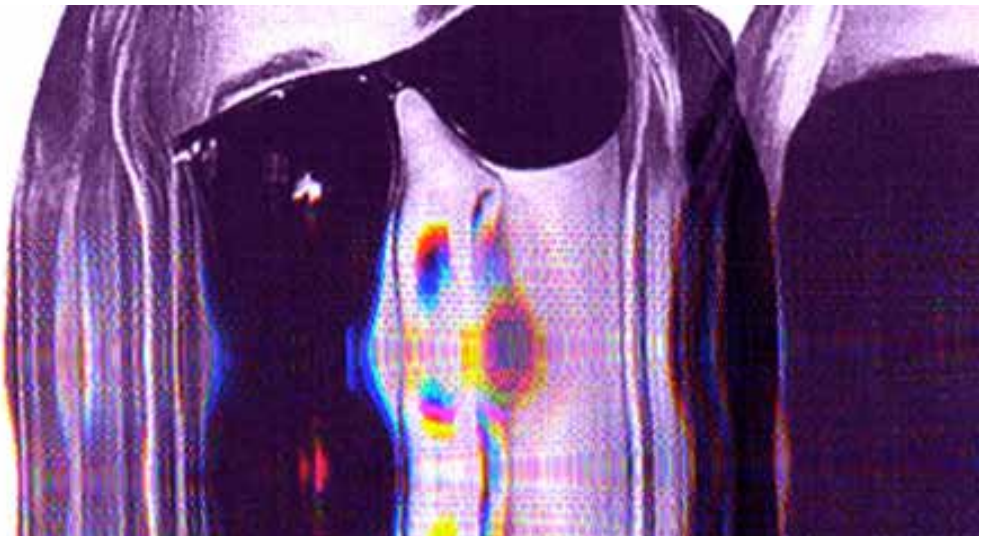
Rosanne Kumins
 Melissa & Peter Lacijan
 Ed & Marilyn Levin
 Warren Liebold
 Elizabeth Littlefield
 Dayna Lucas
 Melanie Matthews
 Jeanne C. Miller
 Audrey Moore
 Kirill Onishchenko
 Susan R. Peterson
 william pike
 Ron & Claire Radice
 Wayne Ransier & Sharon Tomaselli
 Bill & Chris Reynolds
 Lillian Roth
 Milton B. Rubin
 Sherry Schwartz
 Rosemarie Conforte & William Seizer
 Josie Sentner
 Anindita Sinha
 Dorothy Slater-Brown
 Sarah Jane Smedley
 Fran Smyth
 Dominic Spillane
 Gena Stein
 Clarke, Peggy & Claire Utermohle
 Catherine Versegi
 Judith & Robert Waldman
 Alan Watkins
 Barbara & Alex Waugh
 JoAnn Weisel
 John Wilkins
 Kelly Wines & Scott Freishtat
 John Moon & Abby Winship

List as of 11/1/13

UP NEXT @ THE FLEA

PLAYING
NOV 1 - DEC 8

MARY-



FLEA REWARDS

Use your Flea Member Card or ticket stub to take advantage of these special offers from our downtown partners.

Macao Trading Co (311 Church St.)

917-848-0117 / macaonyc.com
Portuguese-Asian Fusion Restaurant
Make a reservation to receive a complimentary pitcher of Sangria.

Pane Pannelle (305 Church St.)

212-219-4037 / panepannelle.com
Italian Tapas Restaurant
Get 10% off your bill with entree purchase

Bread TriBeCa (301 Church St.)

212-334-0200 / breadtribeca.com
Modern Italian Restaurant
Get 10% off your bill with entree purchase

Petrarca (34 White St.)

212-625-2800 / petrarcatribeca.com
Italian Restaurant & Wine Bar
Receive a 10% discount on your bill

Da Mikele (275 Church St.)

212-925-8800 / damikele.com
Neapolitan-Inspired Italian Restaurant
Receive a 10% discount on the bill

Souths (273 Church St.)

212-219-0640 / southsnyc.com
Neighborhood Bar and Restaurant
A complimentary glass of wine with the order of an entrée

Billy's Bakery (75 Franklin St.)

212-647-9958 / billysbakerynyc.com
Deserts and Other Baked Goodies
Buy one cupcake & get the second 1/2 off

Bubble Lounge (228 West Bway)

212-431-3433 / bubblelounge.com
Champagne Bar
Buy 1 drink & get 1 free or get 20% off a bottle of champagne

Sweet Lily Spa (222 West Bway)

212-925-5441 / www.sweetlilyspa.com
Nail Spa and Boutique
10% off of Sweet Lily manicures

Maslow 6 Wine Shop (211 West Bway)

212-226-3127 / www.maslow6.com
Wine Shop
Receive 10% off the price of wine

Dance New Amsterdam (280 Broadway)

212-625-8369 / www.dnadance.org
Progressive Dance Education
Take 10% off classes and workshops

Churrascaria (221 West Bway)

212-925-6969 / churrascariatribeca.com
Brazilian Steakhouse
Receive 10% off your meal

Cercle Rouge (241 West Bway)

212-226-6252 / cerclerougeresto.com
French Bistro
Receive 10% off bill on a pre-show dinner before 7pm

HERE Arts Center (145 Sixth Ave.)

212-647-0202 / www.here.org
Theater
No convenience fee for HARP productions

TriBeCa Grill (375 Greenwich St.)

212-941-3900 / myriadrestaurantgroup.com
American Grill
Enjoy a complimentary sommelier's choice glass of wine with dinner.

CHECK THEFLEA.ORG OR CALL 212-226-0051 x101 FOR THE LATEST UPDATES & DEALS.

THE FLEA THEATER MEMBERS PROGRAM

Get Special Attention. Support The Flea. Be a Member.

Our theater is tiny and we sell out...fast. Members get guaranteed seats plus exclusive discounts, invites, drinks & inside info! All levels of membership are 100% tax-deductible.

Become a Member

\$25 Member

No booking or convenience fees
VIP ticket processing

\$50+ Supporter

All of the above, plus:
Exclusive discounts & deals to partner businesses
First to know of exciting post or pre-show Flea events
Special thanks in Flea programs

\$100+ Contributor

All of the above, plus:
Reserved seating for you and your guests
Exchange tickets up to 24 hours in advance
One complimentary drink at our bar before every show
Reservations to #serials@theflea any night of performance

\$250+ Donor

All of the above, plus:
Invitations to readings and special Flea events
One complimentary drink at our bar for your entire party

\$500+ Partner

All of the above, plus:
Access to Broadway house seats (purchase necessary)
Dinner reservations at select Flea Partner restaurants
Unlimited complimentary drinks

\$1,000+ Patron

All of the above plus:
Invitation to select Opening Night performances and cast parties

Flea I.P's

Interested? Email carolo@theflea.org for more information!

CALL 212.226.0051 x101, or MAIL/FAX the form below to join!

I WANT TO JOIN THE FLEA! (Please check membership level below)

_____ \$25 Member

_____ \$50 Supporter

_____ \$100 Contributor

_____ \$250 Donor

_____ \$500 Partner

_____ \$1,000 Patron

NAME (as should be listed) _____

ADDRESS _____

CITY, STATE, ZIP _____

EMAIL _____ PHONE _____

CREDIT CARD # _____ EXP. _____ SECURITY CODE _____

Mail this form with a check to THE FLEA MEMBERS PROGRAM, 41 White Street, New York, NY 10013 or fax this form with your credit card information to (212) 965-1808. Questions or concerns? Call us at 212-226-0051 x107.