

PRITTE 2012

BY THOMAS BRADSHAW DIRECTED BY BENJAMIN KAMINE  
FEATURING THE BATS / AUGUST 31 THROUGH OCTOBER 7 @ THE FLEA



# THE FLEA THEATER

**JIM SIMPSON** ARTISTIC DIRECTOR **CAROL OSTROW** PRODUCING DIRECTOR

**BETH DEMBROW** MANAGING DIRECTOR

PRESENTS THE NEW YORK PREMIERE OF

# JOB

WRITTEN BY **THOMAS BRADSHAW**

DIRECTED BY **BENJAMIN H. KAMINE**

FEATURING **THE BATS**

**AARON GREEN** SET DESIGN **JONATHAN COTTLE** LIGHTING DESIGN

**ASHLEY FARRA** COSTUME DESIGN **JEREMY S. BLOOM** SOUND DESIGN

**JOYA POWELL** CHOREOGRAPHY **MICHAEL WIESER** FIGHT DIRECTION

**JUSTIN TYME** MAKEUP ARTIST AND SPECIAL EFFECTS

**COURTNEY ULRICH** STAGE MANAGEMENT

JOB WAS COMMISSIONED BY SOHO REPERTORY THEATRE, NYC

# CAST

(IN ORDER OF APPEARANCE)

|                  |                       |
|------------------|-----------------------|
| Joshua.....      | Jaspal Binning        |
| Matthew.....     | Edgar Eguia           |
| Jonas.....       | Adam Lebowitz-Lockard |
| Job.....         | Sean McIntyre         |
| Rachel.....      | Jennifer Tsay         |
| Esther.....      | Marie-Claire Roussel  |
| Andrew.....      | Bradley Anderson      |
| Miriam.....      | Layla Khoshnoudi      |
| God.....         | Ugo Chukwu            |
| Satan.....       | Stephen Stout         |
| Jesus.....       | Grant Harrison        |
| Dionysus.....    | Eric Folks            |
| David.....       | Jimmy Dailey          |
| Sarah.....       | Cleo Gray             |
| Messenger.....   | Timothy Craig         |
| Jeremiah.....    | Ivano Pulito          |
| Joseph.....      | Alex Coelho           |
| Son 1.....       | Abraham Makany        |
| Son 2.....       | Chester Poon          |
| New Wife.....    | Nicolle Medina        |
| Young Woman..... | Christin Eve Cato     |

## Understudies

Timothy Craig (*Satan, Joseph, Jonas, David, Son 1, Son 2*),  
 Christin Eve Cato (*Rachel, Miriam*), Abraham Makany (*Jesus, Messenger, Jeremiah, Andrew*),  
 Nicolle Medina (*Esther, Sarah*), Will Turner (*God, Job*),  
 Chester Poon (*Joshua, Matthew, Dionysus*)

**Note:** Portions of the play have been excerpted from the New International Version of The Bible.

## FLEA STAFF

|   |  |
|---|--|
| Artistic Director.....                          | Jim Simpson  |
| Producing Director.....                         | Carol Ostrow   |
| Managing Director.....                          | Beth Dembrow   |
| Technical Director.....                         | Liz Blessing   |
| Development Manager.....                        | Penn Genthner  |
| Company Manager.....                            | Erin Daley   |
| Marketing Associate.....                        | David Sernick  |
| Audience Development Associate.....             | Dominic Spillane   |
| Assistant Technical Director.....               | Kevin Rees   |
| Graphic Designer.....                           | David Prittie  |
| Costume Manager.....                            | Jeannie Williams   |
| Theater, Technical & Production Consultant..... | Kyle Chepulis  |
| Accountant.....                                 | Joel Faden & Company, Inc.                               |
| Attorney.....                                   | Paul, Weiss, Rifkind, Wharton & Garrison LP/Carol Kaplan |
| Development Consultant.....                     | Rachel Colbert   |
| Press Representative.....                       | Ron Lasko/Spin Cycle                                     |

Special Thanks Technical Artistry, ThinkSo, Tribeca Lighting, Souths

# THE CAST



**Bradley Anderson** (Andrew) Bradley has been a Bat since October 2011. He has been seen in various *#serials@theflea* episodes but he is happy to be making his Flea main stage debut in *Job*. He currently performs at the Peoples Improv Theater with the improv teams USA and Student Driver and performs sketch with National Scandal. Bradley holds an MFA from the University of Iowa.



**Jaspal Binning** (Joshua) Jaspal Binning hails from Birmingham, England where he studied at the London College of Music. He is a proud member of The Bats. He recently starred opposite Tony Nominated actress Condola Rashad in a workshopped play directed by David Staller. He was also a part of the musical *Requiem for a Lost Girl* which was a NYMF festival selection. You can see Jaspal in the TV series *The 39 Clues* as well as the movie musical *It Is What It Is*, an official selection of the Rhode Island International Film Festival,

the New York Independent International Film Festival along with many others including BAFF for which Jaspal won Best Actor in a Film Festival. NY Theatre credits include: Dave in *Almost Maine* (The Players), Apu in *What She Means* (Barrow Group Theater), Simran in *(Un)Missed Connections* (Planet Connections Theater Festival), Kundun in *Parts of Parts & Stitches* (14 Street Y Theater), Oberon in *A Midsummer Night's Dream* (American Theater of Actors), Man in *Madly in Love* (59E59 Theatre), Josh in *Fear* (45th Street Theater). Jaspal would like to thank his agency Innovative Artists.



**Christin Eve Cato** (Young Woman) is an actress, singer, songwriter, and emerging playwright from New York City. Her original creative work has a strong concentration on urban societies, cultural roots, and political issues. She is a graduate of Fiorello H. LaGuardia High School for Music and Art and the Performing Arts, and of Fordham University. She has performed in various regional and off-broadway theaters in NYC, including the Puerto Rican Traveling Theater, Medicine Show Theater, The Triad, and the Manhattan

Movement and Arts Center. She is excited to join The Bats with her first Flea Theater debut in the production of *Job!* She is also a member and outreach coordinator for Theater Resources Unlimited, a member of New York Women in Film & Television and a writer for the Forum Project.



**Ugo Chukwu** (God) Ugo's first project with The Flea Theater two years ago was a reading of *Job* in which he played God, and he's thrilled to be a part of this production! Credits: World Premieres of *Future Anxiety* by Laurel Haines, and the Drama Desk nominated plays *She Kills Monsters* by Qui Nyugen, and *These Seven Sicknesses* by Sean Graney (The Flea Theater). In addition to being a Bat, Ugo is also a member of The Amoralists Theater Company and was last seen in their off-broadway production of *The Bad and The Better*, directed by Obie-award winner Daniel Aukin. Education: Brooklyn College BFA in acting.



**Alex Coelho** (Josph) has been acting in New York since graduating from AMDA in 2006. He's performed with independent theater companies such as Haberdasher Theater where he's played roles as diverse as the King of Hearts in *Alice in Wonderland* and Van Helsing in Mac Wellman's *Dracula*. Recently he had a guest star role on *Law and Order: SVU* and did motion capture work for *Max Payne 3*. He's also studied at The Barrow Group and finally had a chance to join The Bats at The Flea Theater for which he is extremely proud. He would like to thank his parents for their support and the rest of the cast, Ben,

Courtney, Jim, Carol, and of course Mr. Bradshaw for making this a wonderful experience.

**Timothy Craig** (Messenger, u/s Satan, Joseph, Jonas, David, Son 1 and Son 2) is happy to be working with The Flea theater. He is a recent graduate of The University of Alabama at Birmingham in which he received his B.A. in the Arts. His mainstage credits include *Venus*, *Eurydice*, *Joe Turner's Come and Gone* and *In the Blood* for the Kennedy Center's American College Theatre Festival.



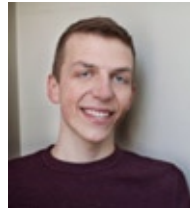
**Jimmy Dailey** (David) New York: *The American Play* (Planet Connections Nom., Outstanding Lead Actor in a Play. Winner, Best Play), *She's Gone Serious* (The Dirty Blondes), *Service of My Desire* (Barrow Group), *The Lost Light* (Sharkmother Arts Collective). Regional: *Glass Menagerie: Project* (Arena Stage). Workshops/Readings: *Iowa: The Musical* (The Flea Theater), *Bacha Posh* (Lark PDC), *Annenberg Project* (Arena Stage). Training: Georgetown University, BADA Midsummer at Oxford. Resident actor, The Bats, The Flea Theater. [www.jimmydailey.com](http://www.jimmydailey.com)



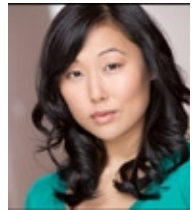
**Edgar Eguia** (Matthew) makes his second appearance at The Flea Theater after making his Bat debut in *She Kills Monsters*. He made his Off-Broadway debut in *The Bad And The Better* with The Amoralists earlier this summer and reprised his role in *Goliath* multiple times this year with Poetic Theater Productions at The Wild Project and Culture Project. He trained at the Stella Adler Studio of Acting. He doesn't know what he's got coming up next but he's sure it's going to be awesome and will continue writing bios in the third person.



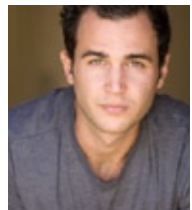
**Eric Folks** (Dionysus) Previous The Flea Theater Credits: *The Wundelsteipen*, *Just Cause*, *The Flying Latke*, and *#serials@theflea*. Other off-off-Broadway: *A Man of No Importance* (Gallery Players). Regional: *Almost Maine*, *The Unexpected Guest*, *Fiddler on the Roof* (New London Barn) *Don't Dress For Dinner*, *25th Annual Putnam County Spelling Bee*, and *The Last Night of Ballyhoo* (OST of Ohio). Eric is a graduate of Otterbein University.



**Cleo Gray** (Sarah) joined The Bats in June 2011 and has recently appeared in *These Seven Sicknesses* as Ismene, as u/s Lilith/Kalioppe for *She Kills Monsters* & multiple cycles of *#serials@theflea*. Cleo received her BFA in Acting from Montclair State University and has studied at Shanghai Theater Academy. She recently produced an evening of readings at Cherry Lane Theater for Asian and..., which she co-founded with fellow Bat Bobby Foley.



**Grant Harrison** (Jesus) is excited to be a part of this production. Recent credits at The Flea Theater include Ajax in *These Seven Sicknesses*, *#serials@theflea* & *Future Anxiety*; with Aporia Theater, *Woyzeck* (as Woyzeck); at The Access Theater; readings at E.S.T. (Youngblood) and The Play Co., proud mentor/volunteer at the 52nd Street Project in Hell's Kitchen. Edu: UCLA - B.A. in Theater.





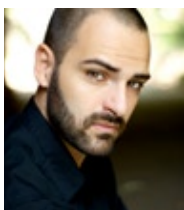
**Layla Khosnoudi** (Miriam) received her MFA in Acting from Brooklyn College where she appeared in *Rough Magic*, *Julius Caesar*, *In the Next Room (or the vibrator play)*, *Bright Room Called Day*, and *Marisol*. Her most recent work was in Lux in *Tenebris* at The Culture Project. She is very proud to have joined The Bats this year, as acting is her primary motivation for staying alive. She looks forward to a life in show biz filled with fame and glory. She also enjoys dancing, a lot.



**Adam Lebowitz-Lockard** (Jonas) is thrilled to be in this World Premiere at The Flea Theater after appearing in numerous *#serials@theflea* with Daytime Planet. Recent New York Credits Include: *Verano Place, NY #OMPF* (Primary Stages), *Decompression* (NY Fringe), *Twelfth Night* (Smith St. Stage), *The Maltinsky Cycle* (Soho Playhouse). Regional: *Fornicated From The Beatles* (American Repertory Theater), *Youth Ink! Festival* (McCarter Theater), *Christmas Present* (Williamstown Theater Festival), *Jacob and Jack* (Montgomery Theater). Internet: "The Audition," "Intervention," "Game Night," ([www.FunnyOrDie.com](http://www.FunnyOrDie.com)). [www.adamlebowitzlockard.net](http://www.adamlebowitzlockard.net)



**Abraham Makany** (Son 1, u/s Jesus, Messenger, Jeremiah, Andrew) Recent theater credits include *Another Life with George Bartenieff* (Theater Three Collaborative), *Advance Man* (Gideon Productions), *OverRuled* directed by Shirin Neshat (Performa), *The Birthday Boys* (ArtEffects Theatre Company), *Names*, *The Incumbent* (Berkshire Playwrights Lab), *Otty*, *Final Girl* (Nosedive Productions), *Three Eternal Days* (The Brick Theater), and the Obie Award winning production of *The Brig* directed by Judith Malina (The Living Theatre). Born in Houston, TX, he is a graduate of the Rutgers University B.F.A. Actor Training Program.



**Sean McIntyre** (Job) Previously at The Flea Theater: World premieres of *These Seven Sicknesses* (Agamemnon), *The Wundelstephen (and other difficult roles for young people)* (Swing), *She Kills Monsters* (Chuck, Miles u/s), *Just Cause* (Officer), and *#serials@theflea*, in which he has performed in new plays by Nick Jones, Crystal Skillman, Chris Dimond, Tim Drucker and Randy Blair, Stacy Davidowitz, Nathan Leigh, Sharyn Rothstein, and countless others. Other NYC Credits include: *Raw Love* (Theater for the New City), *Midsummer Nights Dream* (Pulse Ensemble), *Foreplays* (FullStop Collective), and Brian Watkins' one-man play *High Plains* (Richmond Shepard Theatre). Sean is an associated artist with FullStop Collective, and has a BA in Theatre from James Madison University.



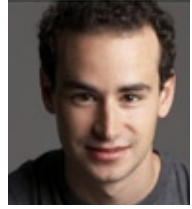
**Nicolle Medina** (New Wife, u/s Esther, Sarah) is thrilled to be a part of her first Flea Theater production as a new member of The Bats and is honored to be a part of this incredibly talented, dynamic and wonderful company of Actors. She is a recent graduate of The Maggie Flanigan Studio two year Acting Conservatory program and previously studied at The Lee Strasberg Theater and Film Institute. Her favorite stage roles so far have been: Darlene in *Hurlyburly*, Brandi in a staged reading of *Babylon NY* at Labyrinth Theater Company and Daniela in *Waxing West*. Favorite film roles so far have been: Judith, in the

Post Civil War Era independent drama *The Clearing* and the Mysterious Woman in the independent psychological thriller *Sleep*.

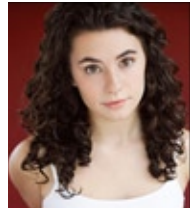
**Chester Poon** (Son 2, u/s Joshua, Matthew, Dionysus) is a recent graduate of The Studio/New York 2-year conservatory and is thrilled to be working with such talented people here in his first production at The Flea Theater. Past favorites include Shakespeare's *Romeo and Juliet* (Teatro La Tea), Charles Busch's *Psycho Beach Party* (The Workshop Theatre), Arthur Miller's *The Crucible* (The New Ohio Theater), and Claire Tran's *Doi Moi* (PRTT). When not working as an actor, Chester is also a personal trainer, a martial arts enthusiast, and a great appreciator of food.



**Ivano Pulito** (Jeremiah), a Tribeca native, has been following The Flea Theater since it's inception in 1996. He has dreamt of joining the company for years, and that dream came true a year ago. He is honored to be making his NYC stage debut in *Job*. In college he performed in Adam Bock's *Five Flights*, Suzanne Lori-Park's *365 Days/365 Plays* and the musical, *Babes in Arms*. Over the past year he has been seen in various roles in *#serials@theflea*.



**Marie Claire Roussel** (Esther) is so proud to be a part of this exciting production! Marie Claire was last seen at The Flea Theater in *These Seven Sicknesses* (Nurse 3). Other NY credits include: *The Lower Depths* (Nastya) at the Connelly Theatre, *Reefer Madness* (Mary) at the Roy Arias Theater, and *Lysistrata* (Myrrhine) for NYC Fringe. [www.MarieClaireRoussel.com](http://www.MarieClaireRoussel.com)



**Stephen Stout** (Satan) is the co-creator of *#serials@theflea*. The Flea: *These Seven Sicknesses*, *The Electric Lighthouse*. NYC: *Salamander Leviathan* (Joe's Pub, Ars Nova), *Clown Bar* by Adam Szymkowitz (Rising Phoenix Rep, dir. Kip Fagan), *File Under: Superwolf* by Bekah Brunstetter (ART/NY) ...*things i found on craigslist* by christopher oscar peña (Theater for the New City), *Sex* (EST/Youngblood), *Yes We Can* (Downpayment Productions). Readings/workshops with Ensemble Studio Theatre, Labyrinth Theater Company, New York Theater Workshop, Red Bull Theater, and Theatre for a New Audience. Film: *Mystery Team* (Roadside Attractions/Sundance Film Festival), *Check Out* (HBO US Comedy Arts Festival). BFA: NYU.



**Jennifer Tsay** (Rachel) is a recent graduate of The Studio / New York and a new Bat. Other Flea Theater credits include *#serials@theflea* and other recent NY credits include *Psycho Beach Party* (Chicklet), *The Imaginary Invalid* (Louison), and *The Crucible* (Ann Putnam). Jennifer has appeared in *Bored to Death*, *One Life to Live* and the independent feature *We Are the Hartmans*. She was also a producer for the documentary film *Divided Families*. [www.jennifertsay.com](http://www.jennifertsay.com)



**Will Turner** (u/s Job, God) previously at The Flea Theater: *These Seven Sicknesses* (The Orderly), *A Letter From Omdurman* (Wyatt Earp), *#serials@theflea* (Vogler, Jesus, Greg). New York: *Cow Play* and *Friends Don't Let Friends*. Will is a graduate of Yale University, where he served as artistic director of The Control Group. He is currently working on a farcical adaption of *Hamlet* and playing with The Lobbyists. He likes hugs.



# THE CREATIVE TEAM

**Thomas Bradshaw** (Playwright) His plays have been produced at regional theaters, in NYC as well as in Europe. Most recently, his play *Burning* ran successfully at the New Group in New York City. In 2011, the Goodman Theater produced his play *Mary*, which they had previously commissioned. *The Bereaved*, produced by Partial Comfort, was named one of the Best Plays of 2009 in Time Out New York. In 2008, two of his plays premiered in NYC: *Southern Promises*, at Performance Space 122 in September, and *Dawn*, at The Flea Theater in November, and both were listed among the Best Performances of Stage and Screen for 2008 in The New Yorker. His plays *Purity*, *Prophet*, *Strom Thurmond is Not A Racist* and *Cleansed* were produced in NYC and LA. A German translation of *Dawn* was presented at Theater Bielefeld in Germany in October 2008 and published by Theater Der Zeit in that same month. Mr. Bradshaw received his M.F.A. from Mac Wellman's playwriting program and is Professor of Playwriting at Northwestern University. He has been featured as one of Time Out New York's ten playwrights to watch, as one of Paper Magazine's Beautiful People, and Best Provocative Playwright by the Village Voice. He has received Fellowships from The Lark Play Development Center, Soho Rep (Streslin Fellow), and New York Theater Workshop. He was the Playwright in Residence at The Soho Theatre in London in February 2009, where he wrote *The Ashes*. Thomas Bradshaw has received commissions from Soho Theatre (London), The Goodman Theater, Soho Repertory Theater (New York), The Flea Theater, Theater Bielefeld (Germany), and Partial Comfort Productions. He is the recipient of a 2009 Guggenheim Fellowship, and the 2012 Award from the Foundation of Contemporary Art.

**Benjamin H. Kamine** (Director) is a stage director from Los Angeles. He has a passion for new work, and his recent directing credits include the world premieres of *Wars and Whores* by Jeffrey Barg and Sarah Ollove, *Gutter Space* by Keith Boynton, *Medea's Got Some Issues* by Emilio Williams, and *Cheesesteak Latkes* by Matt Ocks. He also directed the west coast premiere of *The Gift Horse* by Lydia R. Diamond (*Stick Fly*). He loves ancient cultures, with particular enthusiasm for work that explores his own (Judaism), and he cannot wait to get back to India, where he directed a cross-cultural production of Sophocles' *Philoctetes* in 2008. He is the Resident Director at the Jewish Plays Project and is a member of the Lincoln Center Theater Directors Lab. He also works throughout New York as a sound, lighting, and projection designer, and is a Guest Artist at the Lab School for Collaborative Studies. Previous directing credits for The Flea: *The Flying Latke* by Arthur Yorinks; *Kathleen Supove and the Electric Sheep*.

**Aaron Green** (Set Design) is a theatrical and visual artist based in New York City and is delighted to be designing at The Flea Theater. A recent graduate of Vassar College's Drama program, his previous scenic designs include: *Uncle Vanya*, *Who's Afraid of Virginia Woolf?*, *Death and the Maiden*, and *The Pillowman*. See more of his work at: [www.aaronethangreen.com](http://www.aaronethangreen.com)

**Jeremy S. Bloom** (Sound Design) is a sound designer, composer, and accordionist from Brooklyn, NY. Past design work includes *Homebody/Kabul* and *Who's Afraid of Virginia Wolf* at Vassar's Experimental Theatre, *In A Word* at Williamstown Theatre Festival's Workshop, and *The Greylock Theatre Project*. Jeremy has also contributed as an engineer at the Piper Theater Company, and Chicago The Musical's Broadway tour to Istanbul. As a composer, he writes for a variety of instrumentations and styles with



an emphasis on Balkan and Turkish folk music. Jeremy studied Political Science at Vassar College where he minored in music composition. More can be found at <http://www.jeremyb.com>

**Ashley Farra** (Costume Design) Costume Design: *The Israel Horowitz One Acts*, Ethikos Productions. *The Table Scene*, Nicolas Ward Production. *Sex On Sunday*, The Be Company. Associate Design: *By The Way Meet Vera Stark*, *All New People*, Second Stage Theatre. *Porgy and Bess*, A.R.T.

**Jonathan Cottle** (Lighting Design) has worked as a lighting and scenic designer at places such as the Incubator Arts Project, Abrons Arts Center, The Flea Theater, HERE Arts Center, the Bushwick Starr, Invisible Dog, Magic Futurebox and The Brick Theatre. He has worked with the companies: Foundry Theatre, Object Collection, Half Straddle, Target Margin, Tenement Street Workshop, Theatre Reconstruction Ensemble, Antimatter Collective and Te Illium. He is the resident lighting designer at the Flea.

**Justin Tyme** (Makeup Artist and Special Effects) Having worked professionally in all areas of make up artistry for the last twelve years, gives Justin an edge on make up artistry, FX and SFX that is hard to come by. With notable works in the fashion and entertainment world Justin has proven himself to be within the top of his field. Every project from high fashion to SFX make up is approached with the same dedication to provide the best possible representation of a clients needs. "You should always look the part" is Justin's motto toward life and his work. Please visit [www.justintymemakeup.com](http://www.justintymemakeup.com)

**Michael Wieser** (Fight Director) is proud to be back fight directing at The Flea Theater and working with the amazing Bats in this production of Job. Michael has also worked as fight director at The Flea Theater in both installments of *The Seven Sicknesses*; *Woyzeck* (Aporia Theater Company); *Comedy of Errors* and *The War Boys* (Williamstown Theatre Festival); *These Seven Sicknesses*, *Lear* and *Lesser Mercies* (Exit Pursued by a Bear).

**Joya Powell** (Choreographer) A native New Yorker, Joya Powell received her M.A. in Dance Education from New York University, and her B.A. in Latin American Studies and Creative Writing from Columbia University. Throughout her career she has danced with choreographers such as Katiti King, Neta Pulvermacher, Donlin Foreman and Paco Gomes. Her choreography has appeared on stages such as City Parks Dance, The Flea, DNA, Casa del Prado Theatre in San Diego and The Tank. Ms. Powell has taught dance in Brazil, Puerto Rico, and throughout NYC. As Artistic Director/Choreographer of Movement of the People Dance Company she is dedicated to connecting cultures and finding ways to empower underprivileged communities through dance. She is thrilled to share her passion for world dance with The Bats! And is thankful to The FLEA for this tremendous opportunity. [www.movementofthepeopledance.com](http://www.movementofthepeopledance.com)

**Courtney Ulrich** (Stage Manager) Courtney is a Director/Playwright/Stage Manager. Raised in London, she moved to the US to study Theater and Performance Studies at Georgetown University (2011) and has been in New York ever since. She has worked with The Foundry Theatre, Cornerstone Theater Company, Rising Circle Rep, Target Margin and The Culture Project among others.

# THE FLEA STAFF



**Jim Simpson** (Artistic Director and Founder) Jim was a child actor in his hometown of Honolulu, as a teenager worked with Jerzy Grotowski in Poland, and holds degrees from Boston University School for the Arts and the Yale Drama School. He's worked at many venues in New York City, Nationally and Internationally. Drama Desk cited for Downtown Adventurous Theater, Two-time OBIE-award winner, National Board of Review Excellence in Filmmaking, and cited for artistic leadership in Downtown New York by the Lower Manhattan Cultural Council.



**Carol Ostrow** (Producing Director) joined Jim Simpson at the helm of The Flea in 2001 and *The Guys* marked her return to Off-Off-Broadway. She was the OBIE-award winning Producing Director of the Classic Stage Company, where she produced *The Merchant of Venice*, directed by Jim Simpson, the world premiere of Ezra Pound's *Elektra*, directed by Carey Perloff as well as the acclaimed 30th anniversary production of Pinter's *The Birthday Party*, among others. She was also the founder and original Producing Director of The Powerhouse Theater at Vassar, now in its 28th season. In between, she has been an adjunct professor of theater at Vassar College, Chatham College and McGill University.

For The Flea, Carol has produced dozens of world premieres and has been responsible for sound fiscal management of the theater's \$1M budget for eleven years. In addition to expanding and professionalizing infrastructure at The Flea, she helped to develop the theater's current 18-member board of directors and has overseen the launch of a patron program that has raised more than \$300,000 in the past three years. She has produced the theater's successful galas and has helped The Flea win prestigious grants from The Andrew W. Mellon Theater Program, The National Endowment of The Arts, The Lower Manhattan Development Corporation, The Empire State Development Corporation and The Shubert Foundation, among many others.

Carol is a graduate of Vassar College and the Yale Drama School. She is a board member of LAVA, an acrobatic dance collective, serves on the President's Advisory Council of Vassar College and the Board of Advisors of the Yale Drama School, and on the executive committee of one of the oldest congregations in New York City, Central Synagogue. Married and the mother of four incredible young adults, she and her family count Pittsburgh, London, Montreal and now New York City once again as home.



**Beth Dembrow** (Managing Director) has been with The Flea since 2007 working on *Oh, The Humanity and other exclamations* by Will Eno, *Lower Ninth* by Beau Willimon, *Kaspar Hauser* by Liz Swados & Erin Courtney, *Love/Stories (or But You Will Get Used to It)* by Itamar Moses, *The Great Recession*, an evening of short plays by Thomas Bradshaw, Sheila Callaghan, Erin Courtney, Will Eno, Itamar Moses and Adam Rapp, *Girls in Trouble* by Jonathan Reynolds, *Parents' Evening* by Bathsbeba Doran, *She Kills Monsters* by Qui Nguyen, *These Seven Sicknesses* by Sean Graney and all other mainstage and downstairs productions. Prior to her arrival, she spent two and half years at Lincoln Center Theater where she worked on all mainstage and second stage productions, including the Tony-Award winning productions, *The Light in the Piazza* and Tom Stoppard's *The Coast of Utopia*. Other management experiences include various Broadway and Off Broadway with Snug Harbor Productions (Steven Chaikeelson and Brannon Wiles). Beth holds a B.A. from Cornell University and an M.F.A. in Theater Management and Producing from Columbia University.

**Liz Blessing** (Technical Director) Liz is happy to have found a home at The Flea Theater. Before coming to the Flea she was the Draftsperson for I. Weiss, creating construction drawings for rigging system installation on Broadway and beyond. Previous to that she was an Engineering Assistant for City Theatrical, Inc, where she helped test the W-DMX system. Liz has a B.S. from The College of William and Mary.



**Erin Daley** (Company Manager) comes to The Flea after spending last year producing Arena Stage's Eugene O'Neill Festival in Washington D.C. Prior to this; she spent three years as a coordinator in Los Angeles working in film and commercials before her love of theater tore her away. After cutting her teeth as an independent producer and director, Erin is thrilled to have found a home at The Flea where she can continue to work on exciting and innovative new theater. Erin is proud to have graduated from Skidmore College, Class of 2008.



**Dominic Spillane** (Audience Development Associate) began working with the Flea Theater in 2009 as an actor in *The Great Recession* performing in Sheila Callaghan's *Recess* directed by Kip Fagan, *Classic Kitchen Timer* by Adam Rapp, and *Severed* by Erin Courtney. In 2011 he and partner Stephen Stout created and produced the hit late-night play competition *#serials@theflea*, now in its second year running. As a producer Dominic created the short film "Falling Down" which toured 4 international film festivals, and the one-act festival *Dancing With Myself* at the Working Stage theater in Los Angeles. In 2012 Dominic directed *Bea Arthur and the Knights of the Round Table* by Joe Tracz (Ars Nova's ANT Fest), and *Lighthouse* by Charlotte Miller (Rattlestick Playwrights Theater's TheaterJam). He has also directed short plays by Stacy Davidowitz and Leslye Headland.



**David Sernick** (Marketing Associate) is excited to join the team at The Flea. He graduated from Indiana University with a B.A. in Political Science and Theatre & Drama and a Certificate in Arts Administration. From 2009 – 2012 David was the Marketing Associate at Barrington Stage Company where he cultivated younger audiences with new media strategies thanks to a Future Audiences Grant from TCG. David founded Black Swan Theatre in Grand Rapids, MI and InPulse Productions in Bloomington, IN where he also directed, produced and occasionally acted. Other directing credits include assistant directing at Barrington Stage Company and directing for

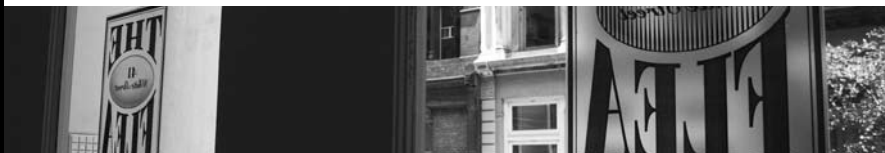


# WHAT IS THE FLEA?

The Flea is our theater: two small, unique performance spaces, located here at 41 White Street in Tribeca. The Flea regularly presents diverse, cutting-edge, and multi-disciplinary work, and has rapidly become a vital part of the city's cultural landscape. A state-of-the-art performance facility, The Flea has presented over 100 plays, 50 dance events, and 50 concerts since its founding fifteen years ago.

With talent, dedication, and a black belt in shoestring budgeting, we have reached our fifteenth season. Founded in 1996 by a group of acclaimed downtown theater artists, the award-winning Flea Theater was originally formed out of the purely artistic impulse to create "a joyful hell in a small space." We quickly became a downtown beacon for creative artists of every discipline, and soon a more formal mission was born: to raise the standards of Off-Off-Broadway for artists and audiences alike. Comfortable seats and decent dressing rooms became as much a part of our mission as talented artists and big ideas.

Now, in 2011, with a special achievement Drama Desk Award, an Otto, and two OBIE Awards to our credit, The Flea continues to embody the spirit of adventure and experiment that has defined Off-Off-Broadway since its inception. Part playground, part laboratory, and part training ground, we are home to emerging artists developing their ideas, mid-career artists solidifying their identities, and established artists going in new directions. With the continued participation of our founders and an ever-growing community of diverse and talented artists, our aim is to keep New York theater vital and to represent the wide range of what is possible Off-Off-Broadway.



## WHO & WHAT ARE THE BATS?

The Bats are our young resident company. Each year, over a thousand young actors audition for a place in this unique company. The Bats perform in long runs of challenging classics and new plays. Not a school, but a repertory company, The Bats also work to support all of the visiting artists at The Flea.



## WHAT IS OFF-OFF-BROADWAY?

Dating back almost fifty years, Off-Off-Broadway is distinguished by a spirit of adventure. It is where established artists go to take risks that the commercial arena does not allow, and it is where young, aspiring writers, directors, and performers learn their craft, develop their talents and begin their professional careers. Non-institutional and resolutely non-commercial, Off-Off-Broadway is as eclectic and varied as the city of New York. While other cities enjoy alternative theater and performance, none have communities as large and vital as New York's Off-Off-Broadway. Welcome and enjoy!

Visit [www.theflea.org](http://www.theflea.org) for videos, photos, and information on all things Flea!  
Find The Flea Theater on Facebook, Twitter & YouTube

# THE BOARD OF DIRECTORS

## **Chair**

Jamie Harris

## **President**

Jim Simpson

## **Secretary**

Douglas Liebhafsky

## **Treasurer**

Emmeline Wexer

Kyle Chepulis

Robert Eimicke

Paul J. Elston

Michael Graff

Andrea Miller

Carol Ostrow

David Prittie

Bernadette Speech

Tony Tramontin

Basil Walter

Sigourney Weaver

Katherine Weinhoff

Stephen Weinroth

Davis Weinstock

# THE FLEA CIRCUS CAMPAIGN

Fifteen years ago The Flea's founders undertook an artistic experiment, renting an old TriBeCa factory in the wilds of Lower Manhattan and opening the doors to the most iconoclastic and talented artists they could find. Since then The Flea has evolved into an award-winning theater known for presenting the very best of Off-Off-Broadway theater, music and dance.

We have also become an emblem for the resilience of Lower Manhattan, drawing more than 150,000 people to the area since the 9/11 attacks. To continue in that leadership role, we recently purchased a site nearby that is soon to become our permanent new home. Our goal is to continue producing our own intimate and exhilarating work while providing stability to dozens of other artists and performance groups. We are grateful to the following for their lead gifts to the project:

## VISIONARIES (\$500K+)

State of New York

Andrew M. Cuomo, Governor  
George E. Pataki, Governor  
Empire State Development Corporation  
Julie Shimer, Chairman  
City of New York  
Michael R. Bloomberg, Mayor  
New York City Council  
Christine C. Quinn, Speaker  
Margaret Chin, Council Member  
James Van Bramer, Council Member  
Borough of Manhattan New York  
Scott M. Stringer, President

Anonymous

The Lower Manhattan  
Development Corporation  
Carol Ostrow and Michael Graff  
Paul Elston and Frances Beinecke  
A.R. and Molly Gurney  
The September 11th Fund

## ANGELS (\$250K+)

Anonymous

Douglas Liebhafsky and Wendy Gimbel  
Sigourney Weaver and Jim Simpson  
Dormitory Authority  
of the State of New York  
Paul T. Williams, Jr., President  
International Creative  
Management, Inc.  
Kenes Rakishev and  
Aselle Tasmagambetova  
Davis and Betsy Weinstock

## PRODUCERS (\$50K+)

Lower Manhattan Cultural Council  
Walter Nick Howley  
Katherine and Samuel Weinhoff  
The Irene Diamond Fund  
Dennis Mehiel  
All The Way Foundation  
Liam Neeson and  
Natasha Richardson  
Omnicom  
David Richenthal  
United Talent Agency

## DIRECTORS (\$25K+)

New York State Council on the Arts  
Aby Rosen, Chair

Lisa Robb, Executive Director  
Jim and Suzy Cameron  
Kyle Chepulis  
The Fran and Ray Stark Foundation  
Marilyn and Jeffrey Katzenberg  
Kathleen Kennedy and Frank Marshall  
Massey Knakal Real Estate  
Ed and Patricia Matthews  
Gould Family Foundation  
David Prittie  
Daryl Roth and Jordan Roth  
Dan and Sue Rothenberg  
Edward Trach  
Basil Walter

## ARTISTS (\$10K+)

Roger Berlind  
André Bishop and  
the Lecomte du Nöuy Foundation  
Emma Sheaffer Charitable Trust  
Andrea and George Miller  
Newman's Own Foundation  
Kent Lawson and Carol Tambor

## PATRONS (\$5K+)

Anonymous  
Vivian Bower and Lawrence Shainberg  
William H. Draper III and  
Phyllis C. Draper  
Jane Gelfman  
Edwin and Lorna Goodman  
The Anrol Foundation  
Mary G. Gurney  
Sylvia G. & Benjamin F. Johnson and  
Sarah East Johnson  
Mark Kaplan  
Edward McKinley  
Mike Nichols and Diane Sawyer  
George Sheanshang  
Jeanne S. and Herbert J. Siegel  
Becky Tesich  
Emily and Lily Wiest

## FRIENDS (\$1K+)

Robert and Betsy Barbanell  
Agnes Martin Barley  
Tom and Meredith Brokaw  
David C. Bryan  
Beth Burnam  
Arthur and Linda Carter  
Michael J. Chepiga and

Pamela Rogers Chepiga  
in honor of Kathy White  
Al and Roma Connable  
Blythe Danner  
Robert L. Denton  
Arlene Donovan  
John and Karen Erickson  
Mr. and Mrs. John Galen  
Joseph F. Godfrey and Keith Halstead  
James and Toni Goodale  
Sarah C. Goodyear  
Jane Whitney Gruson  
Lynne Halliday and B.H. Barry  
Robert and Marilyn Harbage  
Patrick Herold  
Fenita Bilgoraj Heyman  
Cindy and Alan Horn  
Emily F. Johnson  
Marsha Berkowitz and Wayne Kabak  
Marianne and David Kaplan  
Jerome B. Kauff  
Stephen and Marina P. Kaufman  
Louise Lamphere  
Jerry Levine and Nina Tassler  
Paige and Nicky L'Hommedieu  
Kate H. Marber  
Israela Margalit  
Julian Mazor  
Michael Miller  
Robert and Evelyn Miller  
Susan Monserud and Ric Sonder  
Bernard W. Nussbaum  
Pakula Productions, Inc.  
Mary Ann and Bruno A. Quinson  
Deborah Schneider and Jim Tilley  
The Shana Alexander  
Charitable Foundation  
Jonathan Sheffer  
Barry Skovgaard and Marc Wolinsky  
Bernadette Speach and  
Jeffrey Schanzer  
Scott and Dhuane Stephens  
Bruce Sunstein  
David and Deborah Trainer  
Victoria G. Traube  
Ginny and Bob Walther  
Emmeline Wexer  
Marguerite C. Whitney  
F.A. Zunino

For more information on our Capital Project, please contact Carol Ostrow, (212) 226-0051 x104



# FOUNDATIONS, CORPORATIONS, GOVERNMENT & INDIVIDUAL SUPPORT

## \$50,000+

The National Endowment for the Arts  
The Poses Family Foundation

## \$25,000 - \$49,999

Bloomberg Philanthropies  
New York City Department of  
Cultural Affairs  
Warburg Pincus

## \$10,000 - \$24,999

Anonymous  
Daniel E. Rothenberg  
FDNY Foundation  
The Prospect Hill Foundation  
Stephen D. Weinroth  
The Shubert Foundation  
The Fan Fox and  
Leslie R. Samuels Foundation  
The Edward and Sally Van Lier Fund  
of the New York Community Trust

## \$5,000 - \$9,999

The Achilles Foundation  
Larry Condon  
Paul J. Elston and Frances Beinecke  
Wendy and David Hashmall  
The LeBaron Foundation  
Doug Liebhafsky  
The Lucille Lortel Foundation  
The Ettinger Foundation

## \$2,500 - \$4,999

The Angelson Family Fund  
The Axe-Houghton Foundation  
James Cameron  
The Dorothy Strelsin Foundation  
Robert Eimicke  
The John Golden Fund  
Andrea and George Miller  
Fred Poses

## \$1,000 - \$2,499

Gay & Harry Abrams  
Abrams Artists Agency  
American Express – Fall Downtown  
The Barbara Bell Cumming Foundation  
Nancy and Alan Brenner  
Jacqueline Brody  
Jonathan and Margot Davis  
Dramatists Guild Fund  
The Edith Meiser Foundation  
Elizabeth B. Elston  
The Friars Foundation  
Jane R. Gelfman  
Mr. & Mrs. Bernard Kamine  
Mark and Madeline Lebowitz  
The Mary Duke Biddle Foundation  
William Plapinger and Cassie Murray  
Nick and Julie Sakellariadis  
Cynthia King Vance and Lee Vance  
Mary and Jerome Vascellaro

## Partners (\$500+)

Marita and Michael Altman  
Lynn and Mark Angelson  
Anonymous  
Virginia Arcari  
Claudia Baez  
Suzanne Bales  
Robert and Betsy Barbanell  
Eric Seiler  
George and Jane Bunn  
Ellen Davis  
Jean Fitzgerald  
Fred and Susan Foster  
Bobby and Vicky Freeman  
Andrew Frey  
Mia Goldman and Michael Rotblatt  
Lorna B. Goodman and Edwin A. Goodman  
Elena and Everardo Goyanes  
Mike Hackett  
Steve Halle  
Bruce Hector

Anne Hennessey  
Rhoda Herrick  
James Higgins  
Robbi D. Holman  
Lise Jeantet  
David Kelly  
Zachary Kline  
James Krugman  
Carole Leavey  
Jame Willkomm and Marc Lesnick  
Shelly J. London  
Gregory Long  
LuEsther T. Mertz Advised Fund  
Murray A. Luftglass  
Caroline McCandless  
Sherry McCutcheon  
Andrea & Robert Meislin  
Payne Middleton  
Mercedes Niz  
Peter Owings  
Laurence Hazell and Mimi Quillin  
Steven Rand  
Benjamin Reiter  
Sarah Beinecke and Craig Richardson  
Robert Santos and Linda Carlson  
Gretchen Shugart  
Amy Stursberg  
Elizabeth Duggal Taghipour  
Stephanie Garry and Art Tatge  
Robert G. Thacker  
Edward Trach  
Julie Tjomi  
Catherine Van Emon  
Saluggi's  
Russ Weigel and Jane Reynolds  
Emmeline Wexer  
Susan Wilen  
Rebecca Zuck



## THE FLEA I.P.'S

In June of 2009, we established a new initiative called The Flea I.P.s. The Flea Theater represents a wide range of theatrical possibilities and our Flea I.P.s are the people who make these possibilities a reality. Comprised of our most loyal supporters, our Flea I.P.s participate in exclusive events that provide insider access, including private talk-backs and intimate dinners with the artists that call us home – just to name a few of the perks. The Flea I.P.s have committed their support for three full years, generously pledging \$5,000 each year.

Pssst! Interested? We'd love to welcome you to The Flea I.P.'s, too!

Please contact **Dominic Spillane** at 212.226.0051 x107 or [doms@theflea.org](mailto:doms@theflea.org) for more information.

The Flea proudly salutes our Flea I.P. members and thanks them for their unwavering support:

- |                      |                                    |                                 |
|----------------------|------------------------------------|---------------------------------|
| Catherine Adler      | Ellen M. Iseman                    | Catherine Schreiber and         |
| Frances Beinecke     | Shannon Wu and Joseph Kahn         | Miles Ruthberg                  |
| John Beinecke        | Eleanora Kennedy                   | Nanahya Santana and Hume Steyer |
| Heidi Ettinger       | Caroline Niemczyk                  | Katherine and Sam Weinhoff      |
| Michael Graff        | Carol Ostrow                       | Davis Weinstock                 |
| Jeanne and Tom Hardy | Peter Joseph and Elizabeth Scheuer |                                 |

# FLEA MEMBERS

## Donors (\$250 - \$499)

Gretchen Adkins  
Anonymous  
Jon Robin Baitz  
B.H. Barry  
Catherine Cahill and  
William Bernhard  
Rosanne and Ed Braun  
Susan Brittingham  
Melody Chamlee  
Valerie Cooke  
Leslie Danoff  
Barbara LeMay Darring  
Laurie Amory De Grazia  
Joanna B. Dean  
Kendra Decious  
Jamie DeRoy  
Donna Docuk  
Paige Donegan  
Sue B. Dorn  
Christine Doudna and  
Richard Grand-Jean  
John and  
Deborah Evangelakos  
Justin Fleming  
Thomas and  
Darlene Fridstein  
Bruce Goodrich  
David Griffin  
Mrs. James B.  
Gubelmann  
Lynne Halliday  
Janet Holkestead  
Amy Jo Jackson  
Joanne Jacobson  
Jerome Florists  
Wayne Kabak  
Carol Kaplan  
Peter Rose and  
Alicia Kershaw  
Bob and Ida Kowitz  
Roxanne Lecrivain  
Sahra Lese  
Walt and Diane Looney  
Leslie Mahon  
Kate H. Marber  
Andrea and Peter Marber  
James Marden  
Jacqueline Matthews  
Audrey Moore  
Seth Moskowitz  
Julia Nathan  
Randolph and  
Rona Nelson  
John O'Boyle  
Juan and Anne Ocampo  
Kirill Onishchenko  
Susan Peterson  
Roberta Weiss and  
Mitchell Rabinowitz  
Lorinda Radigonda  
Susan Reilly

Maury Rogoff  
Lisa Roumell and  
Mark Rosenthal  
Ellen and Norman Roth  
Margie Ruddick  
Kathleen E. Shannon  
Jim Simpson  
Jeremy Smith  
Mark Subias  
Diane Vaughan  
Vera Warnecke  
Michael Wolkowitz  
John E. Wulp  
Kim Yao

## Contributors (\$100 - \$249)

Suzanne Abercrombie and  
Tiffany Abercrombie  
Edward Albee  
Anonymous (2)  
Darius Babanoury  
Lynn Baker  
Richard and  
Susan Baldwin  
Barbara Bantivoglio  
Stephen Bernstein  
Barbara and Gary Bloom  
Sarah Bond  
Terry Gruber and  
Claudia Brown  
Susan and Paul Buck  
Jeffrey and Susan Chase  
Frank Christopher  
Robert S. Cook, Jr.  
Elyse Dayton  
Judy and Ira Dembrow  
Laura Desmarais  
Frank and Helga Doyle  
Sara and Fred Epstein  
Clarice Feinman  
George L. Fleming  
David Gittleman  
Mary and Gordon Gould  
Bonnie Graff  
Meaghan Gragg  
Faith Hackett  
Julia B. Hall  
John and Diane Haney  
Mary R. Hardin  
Alan Harper  
Anne and Gordon Herrald  
Harris and  
Rande Horowitz  
Indiana Market and  
Catering Inc.  
Thomas R. Keenan  
John Kilgore  
Stephen and Tina Lang  
Thomas Langston  
Liz and Woody Littlefield

Julia M. Loving  
Giselle Mahoney  
Richard H. Maidman  
Sheila and  
David Manischewitz  
Maureen McSherry  
Doreen Memolo  
Daria Moore  
Drs. Benjamin Natelson  
and Gudrun Lange  
Harriet Orley  
Roberto F. Ortiz  
Chip and J.R. Ossman  
Judy and Gary Pasquinnelli  
Jody and Gary Peterson  
Christopher and  
Lynne Ramsey  
Olivia and Steve Russell  
Peter and Lee Scott  
Eleanor W. Shakin  
Fran Smyth  
Leonard Hellenbrand and  
Judith S. Solomon  
Eric Somers  
J.G. Spanne  
Scott and  
Dhuane Stephens  
Deirdre Ann Sullivan  
Patricia Sullivan  
Thomas Synan  
Missie Taylor  
Susan and  
Charles Tribbitt  
Peter and  
Janie Giacomini Van  
Olinda  
Carol and Robert Walker  
Ruth S. Zachary and  
Eve Z. Mykytyn

## Supporters (\$50 - \$99)

Joseph Allen  
Anonymous (2)  
Susan Aranoff  
Dr. Kenneth Brooks Wells  
and M. Christina Benson  
Eleanor S. and  
Robert J. Berlin  
Nadia Bernstein  
Page Burkholder  
Deborah Carmichael  
Ronni Casty  
Evelyn Chen  
Ann and John Costello  
Edla Frankau Cusick  
Josh and Kerry Dorf  
M. Burton Drexler  
Annette Ferstenberg  
Susan Fleischer  
Ken and Kay Folks  
Charles Forma  
James Fraser and

Katherine Hanson  
Elizabeth Garnsey  
David Gilbert  
The Rev. James L. Gill  
Robert Goodman  
Fiona Graff and  
Martin Kurzweil  
Ann G. Green  
Susan and Alan Guma  
Arthur Haddock  
Kathleen Halvey  
Ryan Hart  
Jim Hoffman  
Diane Horan  
Stuart N. Hutchison III  
Benjamin Kamine  
Carol W. Kelley  
Jo Ann Kessler  
Gene Kilik  
David and Susan Kraus  
Rosanne Kumins  
Warren Liebold  
Jane Lin  
Janet Mardfin  
Israela Margalit  
Laurie Meckler  
Diane Miller  
Brigitte Reiss-Andersen  
Todd and Lori Rosen  
Laura Sametz  
Sarah Jane Smedley  
Scout Storey  
Yulia Tikhonova  
Phyllis Trager  
Clarke, Peggy and  
Claire Utermohle  
Sally Wardwell  
Laurie Williams  
Judith Wink and  
Michael Zumoff  
Dale and Robert Zeide

## Special thanks to our \$25 members.

## List as of August 23, 2012



# COMING SOON

*The Flea Theater presents*

## HERESY

A.R. Gurney's 7th World Premiere with *The Flea*

**September 29 - November 4**

Tues - Sat @ 7pm; Sat & Sun @ 3pm

A new look at an old story - Christ's imprisonment under Pontius Pilate. In A.R. Gurney's world it is post-Occupy Wall Street when a peaceful protestor with a populist message is detained. Now who will save him and who will save us? In typical Gurney fashion, he puts his light touch on our darkest despair.

**Tickets: On Sale NOW**

Check [www.theflea.org](http://www.theflea.org) for more info

*The Flea Theater presents*

## #SERIALS@THEFLEA: CYCLE 9

the hit late night play competition

**September 20 - October 6**

Thu - Sat @ 11pm

*#serials@theflea* is a raucous late night play competition featuring *The Bats* and some of NYC's hottest young playwrights. Live music and free beer help fuel this weekly event, which runs Thursday, Friday and Saturday nights. All tickets are only \$10.

**Tickets: \$10**

Available @ the door, cash only. Comes with a free beer from official sponsor Six Point Brewery.

# FLEA REWARDS

Use your Flea Member Card or ticket stub to take advantage of these special offers from our downtown partners.

**Macao Trading Co (311 Church St.)**

917-848-0117 / [macaonyc.com](http://macaonyc.com)  
Portuguese-Asian Fusion Restaurant  
Make a reservation to receive a complimentary pitcher of Sangria.

**Pane Pannelle (305 Church St.)**

212-219-4037 / [panepannelle.com](http://panepannelle.com)  
Italian Tapas Restaurant  
Get 10% off your bill with entree purchase

**Bread TriBeCa (301 Church St.)**

212-625-0200 / [breadtribeca.com](http://breadtribeca.com)  
Modern Italian Restaurant  
Get 10% off your bill with entree purchase

**Petrarca (34 White St.)**

212-625-2800 / [petrarcatribeca.com](http://petrarcatribeca.com)  
Italian Restaurant & Wine Bar  
Receive a 10% discount on your bill

**Da Mikele (275 Church St.)**

212-925-8800 / [damikele.com](http://damikele.com)  
Neapolitan-Inspired Italian Restaurant  
Receive a 10% discount on the bill

**Souths (273 Church St.)**

212-219-0640 / [southsnyc.com](http://southsnyc.com)  
Neighborhood Bar and Restaurant  
A complimentary glass of wine with the order of an entrée

**Billy's Bakery (75 Franklin St.)**

212-647-9958 / [billysbakerynyc.com](http://billysbakerynyc.com)  
Deserts and Other Baked Goodies  
Buy one cupcake & get the second 1/2 off

**Bubble Lounge (228 West Bway)**

212-431-3433 / [bubblelounge.com](http://bubblelounge.com)  
Champagne Bar  
Buy 1 drink & get 1 free or get 20% off a bottle of champagne

**Sweet Lily Spa (222 West Bway)**

212-925-5441 / [www.sweetlilyspa.com](http://www.sweetlilyspa.com)  
Nail Spa and Boutique  
10% off of Sweet Lily manicures

**Maslow 6 Wine Shop (211 West Bway)**

212-226-3127 / [www.maslow6.com](http://www.maslow6.com)  
Wine Shop  
Receive 10% off the price of wine

**Dance New Amsterdam (280 Broadway)**

212-625-8369 / [www.dnadance.org](http://www.dnadance.org)  
Progressive Dance Education  
Take 10% off classes and workshops

**Churrascaria (221 West Bway)**

212-925-6969 / [churrascariatribeca.com](http://churrascariatribeca.com)  
Brazilian Steakhouse  
Receive 10% off your meal

**Cercle Rouge (241 West Bway)**

212-226-6252 / [cerclerougeresto.com](http://cerclerougeresto.com)  
French Bistro  
Receive 10% off bill on a pre-show dinner before 7pm

**HERE Arts Center (145 Sixth Ave.)**

212-647-0202 / [www.here.org](http://www.here.org)  
Theater  
No convenience fee for HARP productions

**TriBeCa Grill (375 Greenwich St.)**

212-941-3900 / [myriadrestaurantgroup.com](http://myriadrestaurantgroup.com)  
American Grill  
Enjoy a complimentary sommelier's choice glass of wine with dinner.

**CHECK THEFLEA.ORG OR CALL 212-226-0051 x101 FOR THE LATEST UPDATES & DEALS.**

# Become a Member

## THE FLEA THEATER MEMBERS PROGRAM

Get Special Attention. Support The Flea. Be a Member.

Our theater is tiny and we sell out...fast. Members get guaranteed seats plus exclusive discounts, invites, drinks & inside info! All levels of membership are 100% tax-deductible.

### \$25 Member

No booking or convenience fees  
VIP ticket processing

### \$50+ Supporter

*All of the above, plus:*  
Exclusive discounts & deals to partner businesses  
First to know of exciting post or pre-show Flea events  
Special thanks in Flea programs

### \$100+ Contributor

*All of the above, plus:*  
Reserved seating for you and your guests  
Exchange tickets up to 24 hours in advance  
One complimentary drink at our bar before every show  
Reservations to *#serials@theflea* any night of performance

### \$250+ Donor

*All of the above, plus:*  
Invitations to readings and special Flea events  
One complimentary drink at our bar for your entire party

### \$500+ Partner

*All of the above, plus:*  
Access to Broadway house seats (purchase necessary)  
Dinner reservations at select Flea Partner restaurants  
Unlimited complimentary drinks

### \$1,000+ Patron

*All of the above plus:*  
Invitation to select Opening Night performances and cast parties

### Flea I.P.'s

Interested? Email [carolo@theflea.org](mailto:carolo@theflea.org) for more information!

**CLICK HERE, CALL 212.226.0051 x101, or MAIL/FAX the form below to join!**

I WANT TO JOIN THE FLEA! (Please check membership level below)

\$25 Member

\$50 Supporter

\$100 Contributor

\$250 Donor

\$500 Partner

\$1,000 Patron

NAME (as should be listed) \_\_\_\_\_

ADDRESS \_\_\_\_\_

CITY, STATE, ZIP \_\_\_\_\_

EMAIL \_\_\_\_\_ PHONE \_\_\_\_\_

CREDIT CARD # \_\_\_\_\_ EXP. \_\_\_\_\_ SECURITY CODE \_\_\_\_\_

Mail this form with a check to THE FLEA MEMBERS PROGRAM, 41 White Street, New York, NY 10013 or fax this form with your credit card information to (212) 965-1808. Questions or concerns? Call us at 212-226-0051 x107.