

SOPHOCLES  
7\_Surviving\_Plays

/Oedipus  
/In Trachis  
/In Colonus  
/Philoktetes  
/Ajax  
/Elektra  
/Antigone

\$40.00=  
5-HR/Marathon  
+Dinner

THE FLEA THEATER  
PRESENTS

THESE  
SEVEN  
SICK-  
NESSES

BY  
SEAN GRANEY

DIRECTED BY  
ED SYLVANUS  
ISKANDAR

FEATURING

THE BATS

STARTING JANUARY 19

ON



OFF



@ THE FLEA 41 WHITE STREET TRIBECA 212-352-3101 WWW.THEFLEA.ORG

© 2012 THE FLEA THEATER. NEW YORK, NEW YORK ALL RIGHTS RESERVED. GRAPHIC DESIGN: DAVID PRITTE



# THE FLEA THEATER

**JIM SIMPSON** ARTISTIC DIRECTOR    **CAROL OSTROW** PRODUCING DIRECTOR  
**BETH DEMBROW** MANAGING DIRECTOR

PRESENTS THE NEW YORK PREMIERE OF

# THESE SEVEN SICKNESSES

WRITTEN BY **SEAN GRANEY**

DIRECTED BY **ED SYLVANUS ISKANDAR**

FEATURING **THE BATS**

**JULIA NOULIN-MERAT** SET DESIGN    **CARL WIEMANN** LIGHTING DESIGN

**LOREN SHAW** COSTUME DESIGN    **PATRICK METZGER** SOUND DESIGN

**MICHAEL WIESER** FIGHT DIRECTION    **DAVID DABBON** MUSIC DIRECTION

**GREG VANHORN** DRAMATURG

**EDWARD HERMAN, KARA KAUFMAN** STAGE MANAGEMENT

*These Seven Sicknesses* was originally incubated in New York City during Lab 2 at Exit, Pursued by a Bear (EPBB), March 2011; Ed Sylvanus Iskandar, Artistic Director.

# THESE SEVEN SICKNESSES

## CAST

(IN ORDER OF APPEARANCE)

### PROLOGUE

Orderly.....	Will Turner
Nurse 1.....	Glenna Grant
New Nurse.....	Tiffany Abercrombie
Nurse 2.....	Eloise Eonnet
Nurse 3.....	Marie Claire Roussel
Nurse 4.....	Jenelle Chu
Nurse 5.....	Olivia Stoker

### OEDIPUS

Sick Woman.....	Cameran Hebb
Oedipus.....	Jeff Ronan
Antigone.....	Katherine Folk-Sullivan
Creon.....	Stephen Stout
Blind Seer.....	Holly Chou
Jocasta.....	Satomi Blair
Carrier.....	Tommy Crawford
Ismene.....	Cleo Gray
Polyneices.....	Yoni Ben-Yehuda
Eteokles.....	Bobby Foley

### IN TRACHIS

Dejanira.....	Kate Michaud
Hyllus.....	Miles Jacoby
Carrier.....	Tommy Crawford
Philoktetes.....	Seth Moore
Iole.....	Liz Tancredi
Herakles.....	Victor Joel Ortiz

### IN COLONUS

Antigone.....	Katherine Folk-Sullivan
Oedipus.....	Jeff Ronan
Theseus.....	Ugo Chukwu
Creon.....	Stephen Stout
Polyneices.....	Yoni Ben-Yehuda
Ismene.....	Cleo Gray
Blind Seer.....	Holly Chou
Ismene.....	Cleo Gray
Carrier.....	Tommy Crawford

### PHILOKTETES

Odysseus.....	Bobby Foley
Neoptolemus.....	Alex Herrald
Philoktetes.....	Seth Moore
Carrier.....	Tommy Crawford
Shade of Herakles.....	Victor Joel Ortiz
Shade of Dejanira.....	Kate Michaud

# THESE SEVEN SICKNESSES

## CAST CONTINUED

(IN ORDER OF APPEARANCE)

### AJAX

Sheep.....	Dave Brown
Sheep.....	Charlotte Bydwell
Sheep.....	Alexander Cook
Sheep.....	Ugo Chukwu
Sheep.....	Victoria Haynes
Sheep.....	Miles Jacoby
Sheep.....	Erik Olson
Sheep.....	Liz Tancredi
Ajax.....	Grant Harrison
Agamemnon.....	Sean McIntyre
Menelaus.....	Alex Grubbs
Odysseus.....	Bobby Foley
Eurysakes.....	Tony Vo
Tekmessa.....	Allison Buck
Carrier.....	Tommy Crawford
Philoktetes.....	Seth Moore

### ELEKTRA

Orestes.....	Erik Olson
Shade of Agamemnon.....	Sean McIntyre
Elektra.....	Betsy Lippitt
Chrysothemis.....	Charlotte Bydwell
Clytemnestra.....	Akyiaa Wilson
Aegisthus.....	Nate Washburn

### ANTIGONE

Antigone.....	Katherine Folk-Sullivan
Polyneices.....	Yoni Ben-Yehuda
Creon.....	Stephen Stout
Ismene.....	Cleo Gray
Haemon.....	Matt Barbot
Blind Seer.....	Holly Chou
Carrier.....	Tommy Crawford

### Understudies

Tiffany Abercrombie (*Nurse 3*), Matt Barbot (*Theseus, Sheep*),  
 Yoni Ben-Yehuda (*Agamemnon*), Satomi Blair (*Clytemnestra*), Dave Brown (*Hyllus, Orestes*),  
 Allison Buck (*Jocasta*), Jenelle Chu (*Nurse 2*), Ugo Chukwu (*Aegisthus, Menelaus*),  
 Alexander Cook (*Carrier*), Tommy Crawford (*Psychopomp*), Eloise Eonnet (*Nurse 1*),  
 Katherine Folk-Sullivan (*Elektra*), Glenna Grant (*Nurse 4*), Cleo Gray (*Iole, Tekmessa*),  
 Alex Grubbs (*Philoktetes*), Grant Harrison (*Polyneices, Haemon*), Victoria Haynes (*Antigone*),  
 Cameran Hebb (*Blind Seer, Sheep*), Alex Herrald (*Creon, Sheep*),  
 Miles Jacoby (*Neoptolemus*), Betsy Lippitt (*Ismene*), Sean McIntyre (*Herakles*),  
 Kate Michaud (*Chrysothemis*), Seth Moore (*Oedipus*), Victor Joel Ortiz (*Ajax*),  
 Jeff Ronan (*Eurysakes*), Marie Claire Roussel (*Nurse 5*), Olivia Stoker (*Nurse 3*),  
 Stephen Stout (*Sheep*), Liz Tancredi (*Sick Woman*), Nate Washburn (*Odysseus*),  
 Tony Vo (*Eteokles*), Akyiaa Wilson (*Dejanira*)

# THESE SEVEN SICKNESSES

## CREATIVE TEAM

Playwright.....	Sean Graney
Director.....	Ed Sylvanus Iskandar
Set Design.....	Julia Noulin-Merat
Lighting Design.....	Carl Wiemann
Costume Design.....	Loren Shaw
Sound Design.....	Patrick Metzger
Fight Director.....	Michael Wieser
Music Director.....	David Dabbon
Production Voice/Speech Coach.....	Amy Jo Jackson
Assistant Set Design.....	John Jalandoni
Assistant to Set Design.....	Jennifer Woo
Assistant Costume Design.....	Maeve Kelly
Assistant Dramaturg.....	Sarah Wansley
Graphic Design.....	David Prittie
Photography.....	Laura Kirsch
Stage Manager.....	Edward Herman
Stage Manager.....	Kara Kaufman
Set Design Intern.....	Laura Hoffman
Resident Director.....	Tom Costello
Resident Director.....	Ben Kamine

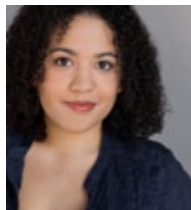
## FLEA STAFF

Artistic Director.....	Jim Simpson
Producing Director.....	Carol Ostrow
Managing Director.....	Beth Dembrow
Technical Director.....	Liz Blessing
Development Manager.....	Penn Genthner
Marketing & Membership Manager.....	Christopher Massimine
Company Manager.....	Sarah Wansley
Assistant Technical Director.....	Kyle Crose
Marketing Assistant.....	Crystal Arnette
Graphic Designer.....	David Prittie
Costume Manager.....	Holly Chou
Theater, Technical & Production Consultant.....	Kyle Chepulis
Accountant.....	Joel Faden & Company, Inc.
Attorney.....	Paul, Weiss, Rifkind, Wharton & Garrison LP/Carol Kaplan
Development Consultant.....	Rachel Colbert
Press Representative.....	Ron Lasko/Spin Cycle

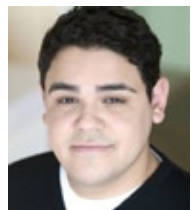
Special Thanks **Office Max, Technical Artistry, ThinkSo, Tribeca Lighting, Ted Caine (Attic Theatre), Asher Arnold, Chantal Pavageaux, Chef Kevin Chun and Rizo Popovic at Macao Trading Company, Julie Dugas at Billy's Bakery**

# THE CAST

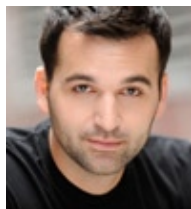
**Tiffany Abercrombie** (New Nurse; u/s Nurse 3) Credits include *#serials@theflea* (The Flea Theater), *Twelfth Night* (Accidental Shakespeare Co.) *Henry IV parts I & II*, *Under Milkwood*, *Twelfth Night*, *Hamlet* (Rebellious Subjects Theater), *Henry V* (Manhattan Shakespeare Project), *The Alchemist* (re-verse Theater), *Letters to the End of the World* (At Hand Theatre), *Les Liaisons Dangereuses*, *Three Birds Alighting on a Field*, *The Tempest*, *Troilus and Cressida*, *A Midsummer Night's Dream*. Training: BFA—NYU, RADA. For my mother.



**Matt Barbot** (Haemon; u/s Theseus, u/s Sheep) is thrilled to be with The Bats. He recently appeared in Red Shark/White Rabbit's *Macbeth* (Porter, Donalbain), The Management's *Songs for a Future Generation* (The Kid), and the STNJ Next Stage Ensemble's touring productions of *As You Like It* (Touchstone) and *The Rover* (Belleville). He will also be appearing as David in the upcoming webseries *Scout & Maggie*. As a playwright, his full length play *Infallibility* was workshopped at Theater for the New City; his short *End Times* was produced by The Krane Theater in Miami and LA; his short *\*Boldly Go\** was featured at Brooklyn's The Brick Theater.



**Yoni Ben-Yehuda** (Polyneices; u/s Agamemnon) graduated from The Actors Studio MFA program at Pace University in 2011. Shortly after graduating he became a member of The Flea Theater's Acting Company, The Bats. Yoni has just been cast as the lead in the feature film *Camp Revelation* that shoots in 2012. Yoni has put out two albums with Sony/RED Records, and has been featured on several albums that have sold Platinum over seas (including *The Light and The Shadow*) His latest album *Hebonics 101* was executive produced by hip hop Icon M.C Serch, and now has a video in Rotation on MTVu.



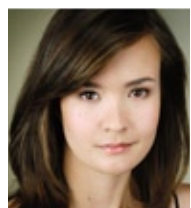
**Satomi Blair** (Jocasta; u/s Clytemnestra) has appeared at The Flea in *She Kills Monsters*, *American Sexy* (world premieres) and *#serials@theflea*. Founder of 4Hawk Productions, which is currently producing the documentary film *The Austin Pendleton Project: Where The Work Is*. Satomi is a member of Leviathan Lab, a graduate of Fordham University at Lincoln Center, and a Netflix subscriber. For additional acting and producing credits, visit [satomiblair.com](http://satomiblair.com)



**Dave Thomas Brown** (Sheep; u/s Orestes, u/s Hyllus) suffers from full blown Peter Pan syndrome and has absolutely no interest in a cure. Recent credits include: *The Abominable Blogologues* (Lively Productions), *Asking For Trouble* (Ensemble Studio Theatre), *Complete Works of Shakespeare Abridged* (Royal Pretenders). Dave does voiceovers for early education software programs and animated film. He is a proud graduate of the North Carolina School of the Arts, as well as a company member of The Flea Theater and Ensemble Studio Theatre.



**Allison Buck** (Tekmessa; u/s Jocasta): Allison is pleased to be in her fifth production as a Bat! Previous shows at The Flea include *She Kills Monsters* (Tilly), *Just Cause* (Coco), *Future Anxiety* (Shelby), and *Looking at Christmas* (Charmian). She graduated with a BA in Theater Arts from Cornell University.





# THE CAST

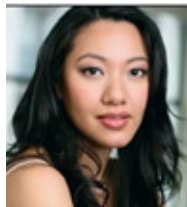


**Charlotte Bydwell** (Chrysothemis, Sheep) graduated from The Juilliard School with BFA in Dance in May 2009. She has studied acting with Anthony Abeson and completed the British Academy of Dramatic Arts summer course at Oxford University in August 2011. Charlotte has worked with Monica Bill Barnes & Company and Keigwin + Co, appearing at Jacob's Pillow, the American Dance Festival and The Joyce Theatre, among others. In May 2011, Charlotte premiered her one-woman show, *Woman of Leisure and Panic*, at P.S. 122, as part of the 8th Annual soloNOVA Festival. The show was nominated for a New

York Innovative Theatre Award for Outstanding Performance Art Production. Charlotte joined The Bats in October 2011 and is thrilled to be appearing in *These Seven Sicknesses*.



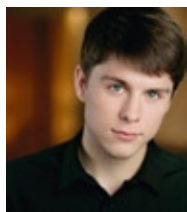
**Holly Chou** (Blind Seer) This is Holly's fourth season as a Bat. Previous roles at The Flea include Lucia in Joesph Addison's *Cato*, Jen in Thomas Bradshaw's *New York Living* as part of *The Great Recession*, Janice/Arlene/Betsy in A.R. Gurney's *Office Hours*, Betty/Match Girl in Steven Banks' *Looking at Christmas*, and Comrade Li in Laurel Haines' *Future Anxiety*. [www.hollychou.com](http://www.hollychou.com).



**Jenelle Chu** (Nurse 4; u/s Nurse 2) holds a BA from the University of Missouri Kansas City Conservatory of Music in Vocal Performance. Since moving to New York she has been studying acting with Michael Howard at the Michael Howard Studios. This is her first production at The Flea.



**Ugo Chukwu** (Theseus, Sheep; u/s Aegisthus, u/s Menelaus) Previous credits at The Flea include the world premieres of *Future Anxiety*, *She Kills Monsters* (understudy), and *#serials@theflea*. Other NYC credits include *Take Me Out*, *The Green Man*, and *King Lear*. Education: BFA in acting at Brooklyn College.



**Alexander Cook** (Sheep; u/s Carrier) graduated from Tufts University this past May with a degree in English. Deciding to pursue his life-long dream of acting, Alexander has returned home to New York City and is now making his New York stage debut in *These Seven Sicknesses*.



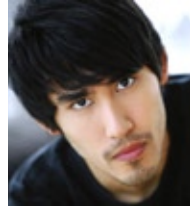
**Tommy Crawford** (Carrier; u/s Psychopomp) has been a Bat since Sheila Callaghan's *Recess*, in which he played a foot game while staving off starvation. The Flea: *Office Hours*, *The Great Recession*, *Just Cause*, *Parents' Evening* (u/s for James Waterston), *Nine Days Falling* (Workshop), *Woyzeck* (Workshop), *#serials@theflea*. Other New York: *Asking For Trouble* (EST), *The Rivals* (BMI Musical Workshop), *Take Her To See the Maco Lights* (The Lark Workshop), *La Bohème Spoken* and *The Green Knight* (Jeremy Bloom dir.), Sam French OOB. Regional: *Wars and Whores: The Henry IV Musical* (Philly Fringe), Williamstown Theatre Festival Workshop, *Hamlet* (Elm Shakespeare). Education: Yale University. [www.tommycrawford.com](http://www.tommycrawford.com)

# THE CAST

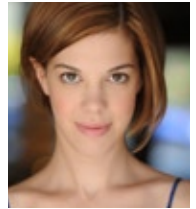
**Eloise Eonnet** (Nurse 2; u/s Nurse 1) became a Bat in Fall 2011. Recent credits include *#serials@theflea*, *Las Meninas*, *Tartuffe*, *Susie and Mark*, *Hippolytus* and *Statements after an Arrest Under the Immorality Act*. Regional Theater: *Cracking* and *90 Days* at the Williamstown Theater Festival. Eloise graduated from Barnard College with a degree in Psychology. For additional credits and training, visit [eloiseeonnet.com](http://eloiseeonnet.com)



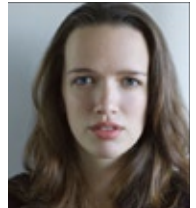
**Bobby Foley** (Eteokles & Odysseus) last appeared in *#serials@theflea*: cycles 2-5. In New York, he has also worked with Leviathan Lab and The Airmid Theatre Company. He graduated from Yale University with a BA in Theater Studies and also trained at the London Academy of Music and Dramatic Arts.



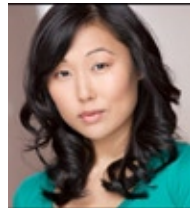
**Katherine Folk-Sullivan** (Antigone; u/s Elektra) World premieres at the Flea: *Office Hours* (A.R. Gurney), *The Great Recession* (Will Eno et al.), *Future Anxiety* (Laurel Haines), and *Just Cause* (Zack Russel). In *#serials@theflea*, Katherine has appeared in new work by Nick Jones, Chad Beckim, Nathan Leigh, and many others. BA in Cultural Studies from McGill University.



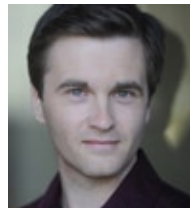
**Glenna Grant** (Nurse 1; u/s Nurse 4) is making her Flea debut in *These Seven Sicknesses*. Previous work includes *Three Sisters* (Glass Bandits Theater Co.), *Project '68* (workshop with LAByrnth Theater Company), and *Richard III* (Purchase College). Glenna holds a BFA in Acting from Purchase College, and is a founding member of the Glass Bandits Theater, a Brooklyn based experimental theatre group.



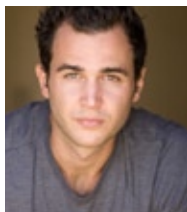
**Cleo Gray** (Ismene; u/s Iole, u/s Tekmessa) joined the Bats in June 2011 and has recently appeared in *#serials@theflea*. Cleo received her BFA in Acting from Montclair State University and has studied at Shanghai Theater Academy.



**Alex Grubbs** (Menelaus; u/s Philoktetes) was most recently in *Tea Party* at Columbia University's Schapiro Theatre and *Acedia* at Theatrelab in New York. He has appeared in *The 39 Steps* and *Barefoot in the Park* at Heritage Theatre Festival, *Ajax*, *Philoktetes* and *Women of Trachis* with Theatre of War at U.Va. and *The Glass Menagerie*, *A Midsummer Night's Dream*, *Dead Man's Cell Phone*, *The Imaginary Invalid* and *Fuddy Meers* at the U.Va. Drama Department. Alex has an MFA in Acting from the University of Virginia.







**Grant Harrison** (Ajax; u/s Polyneices, u/s Haemon) is thrilled to be in this production at The Flea. Recent credits: *Future Anxiety* and *#Serials@theflea*, both at The Flea and *Asking For Trouble* at EST. Grant has appeared in two short plays as a volunteer/mentor at The 52nd Street Project in Hell's Kitchen. Education: UCLA



**Victoria Haynes** (Sheep; u/s Antigone) is delighted to be making her debut at The Flea. She earned her BFA with Honors in Theater from NYU Tisch, where she studied at Stella Adler Studio. Her favorite theater roles include Dolly in *You Never Can Tell* (Gingold Theatrical Group), Paula in *I Was Tom Cruise* (NY Fringe Winner, Outstanding Play), Vera in *10 Little Indians* & Jo in *A Few Good Men* (both at Cortland Rep), Nina in *Nina Variations*, Mary Jane in *Jesus Hopped The A-Train*, Rachel in *Reckless* (Stella Adler Company). Film and television work includes *Rachel Getting Married*, *Identical*, and the upcoming short films

*Bottled*, *The Terrors of Basket-Weaving* and *The Game*, as well as a co-star role on *CSI:NY*. She also works with Brooklyn-based theater company Smith Street Stage.



**Cameran Hebb** (Sick Woman; u/s Blind Seer, u/s Sheep) is so thankful for the best Flea bite she's ever had in her life, with this new wave of theatrical endurance. She is a hardcore Tarheel from her education at the University of North Carolina- Chapel Hill. New York has afforded many life thoughts and experiences in all facets, but, theatrically, she has been rendezvousing with Redd Tale Theatre Company and their productions of *Triumph of Love*, *Macbeth* as well as Manhattan Theatre Mission's *keepingabreast*.



**Alex Herrald** (Neoptolemus; u/s Creon, u/s Sheep) At the Flea: *Just Cause*, *Future Anxiety*, and *#serials@theflea*. NY Theatre: *Fantastic Adventures of TGSM* (Ars Nova ANT Fest 2011), *Veritas* (Fringe Benefit Series), *Insurmountable Simplicities* (NY Fringe Festival), *Decadent Acts* (Planet Connections Festivity), *Buddy Holly at the Armory* (Prospect Theatre Company), *The House of Blue Leaves* (Gallery Players), *Galileo* (Milk Can Theatre Company), *The Tender Trap* (Retro Productions), *The Meaning of Life...* (Rope Swing Entertainment), *The Reckoning of Kit and Little Boots* (Gallery Players and Engine 37, NYIT Award winner); Film: *Hypno* (w/James Franco), *The Conservatory* (winner of first place College Emmy Award for Comedy), *Rooth and B*, *Paperclip*, and *Currents*.



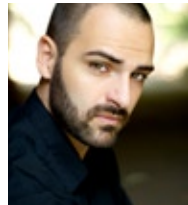
**Miles Jacoby** (Hyllus, Sheep; u/s Neoptolemus) is so excited to be making his New York City debut at The Flea. Having graduated from Yale University last May, Miles spent the summer at the Williamstown Theatre Festival and then recently performed at the New Orleans Fringe Festival in a new musical called *Zombies Actually...an undead musical*. Favorite roles at Yale included Roger in *Rent*, Bernard Nightingale in *Arcadia*, Floyd Collins in *Floyd Collins*, Mark in *The Shadow Box*, and Jerry Lukowski in *The Full Monty*. For more information and credits, please visit [www.milesjacoby.com](http://www.milesjacoby.com)

# THE CAST

**Betsy Lippitt** (Elektra; u/s Ismene) has appeared at The Flea in the world premieres of *Future Anxiety*, *Just Cause*, *Looking at Christmas*, *Office Hours*, *Girls in Trouble*, *Unum* by Will Eno as part of *The Great Recession*, and *#serials@theflea*. Other recent credits include *Blue Bearded Lover* (Symphony Space's Selected Shorts on NPR) and several commercials with the dynamic duo, Chen+Wong! For more info visit [www.betsy-lippitt.com](http://www.betsy-lippitt.com).



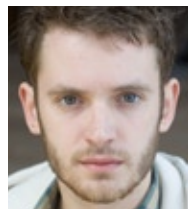
**Sean McIntyre** (Agamemnon; u/s Herakles) is thrilled to be a part of this talented company. Previous productions at The Flea include *She Kills Monsters*, *Just Cause*, and *#serials@theflea*. Other NYC credits include *Raw Love* (Theater for the New City), *Foreplays* (FullStop Collective), and *A Midsummer Night's Dream* (Pulse Ensemble). He has a degree in Theater from James Madison University.



**Kate Michaud** (Dejanira; u/s Chrysothemis) At The Flea: *The Great Recession* (world premiere by Will Eno, dir. Jim Simpson), *Just Cause* (world premiere), *#serials@TheFlea* (proud member of Daytime Planet). NYC Theater: *The Sister* (The Brick, dir. Jess Chayes), *Miss Julie* (Columbia University), *Ground to Cloud* (FringeNYC, dir. Christine Marie), *365 Days/365 Plays* (FullStop Collective), *Waxing West* (by Saviana Stanesco, dir. Lee Gundersheimer). Film: *Subhysteria*, *Unscripted*, *Interrupted*. Training: The Strasberg Institute (awarded scholarship by Anna Strasberg), The National Theater Institute at The Eugene O'Neill Theater Center, La Sorbonne, Connecticut College. Seeking representation. [www.KateMichaud.com](http://www.KateMichaud.com).



**Seth Moore** (Philoktetes; u/s Oedipus) is an actor/writer/musician/artist living here in New York City. He is a theater junkie and thus is beyond excited to have a hand in this ambitious undertaking (his third production here at The Flea). Seth received a BFA in acting from the University of Michigan, where he also studied playwriting. Past credits include *Rat in the Skull* (Naylor, 1st Irish theater festival), *Our Lady of 121st street* (Pinky, U of M mainstage), *Future Anxiety* (Flea). He can also be seen in *#Serials@theflea*, the Flea's late-night theater extravaganza (most recently in Donald Prescod's *The 1's and 2's*, as Trevor).



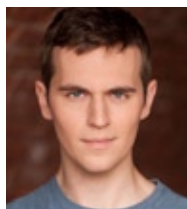
**Erik Olson** (Orestes, Sheep) is a graduate of NYU's Tisch and Atlantic Theater Company's Acting School. He is thrilled to be working on his first show at the Flea. Previous credits include *Our Town* (Wally Webb) at Williamstown Theatre Festival, and *Psycho Beach Party* (Star Cat) with Pipeline Theatre Company. He is co-founder of emerging downtown theater company The Bower Group.



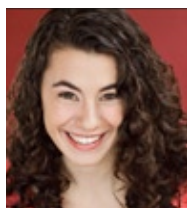


**Victor Joel Ortiz** (Herakles; u/s Ajax) was born in Puerto Rico and raised in Miami, Florida. He has a BFA in Acting from Florida International University and has studied under world-class teachers including Fred Kareman, Terry Schreiber and Emmy award winning Director Peter Miner. His credits include *All My Children*, *As The World Turns*, *One Life to Live*, and *Men In Black III* opposite Will Smith and Josh Brolin. He was also cast in a staged reading of *All About Eve* opposite Cynthia Nixon and Annette Bening. Victor was featured by Backstage as one of five nationwide actors in their monthly article *Take-5*.

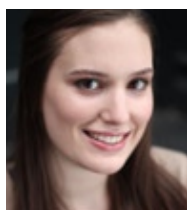
He is pleased to make his Flea Theater debut as a member of The Bats in Sean Graney's *These Seven Sicknesses*. For more on him visit [VictorJoelOrtiz.com](http://VictorJoelOrtiz.com).



**Jeff Ronan** (Oedipus; u/s Eurysakes) National Tour: *Chamber Theatre's Encore!* NYC: *The Last Days of Judas Iscariot* (Sanguine Theatre Co), *The Tragedie of Cardenio* (Squeaky Bicycle Prod), *The Last Supper* (Rising Sun Theatre), *Asymmetry* (Puffy Shirt Prod), and his play *The Mulberry Bush* (Manhattan Rep). Regional: *Seven Homeless Mammoths* (Two River Theatre), *Humbug* (Premiere Stages), *...Welcomes Charlie Chaplin* (St. George Productions) and *Measure for Measure* (NE Shakespeare Festival). For additional acting and writing credits, visit [jeffronan.com](http://jeffronan.com)



**Marie Claire Roussel** (Nurse 3; u/s Nurse 5) is proud to be making her Flea debut with this cast of wonderful people. Marie Claire's previous credits include: *Reefer Madness* (Mary) at the Roy Arias Theatre Center, *Lysistrata* (Myrrhine) in NYC Fringe, *Romeo and Juliet* (Juliet) at Shakespeare & Co., *Uncle Vanya* (Sonya) at the Moscow Arts Theatre, and *Eurydice* (Eurydice) with Skidmore College Theatre.



**Olivia Stoker** (Nurse 5; u/s Nurse 3) is thrilled to make The Flea her first stop since graduating from Princeton in May. She is an experienced jazz singer and Italian Commedia dell'Arte performer. She wrote and performed a one woman Commedia show, *A Broad Abroad* (LeMoyne Page Award). Favorite theater roles include Bunny (*House of Blue Leaves*), Amy (*In The Wake*), Becky/Debbie/Denise (*Heidi Chronicles*), Lady MacDuff (*Macbeth*), Mde Dilly (*On the Town*) (Rising Star Award). She has studied at LAMDA and University of Bologna, Italy.

**Stephen Stout** (Creon; u/s Sheep ) is co-creator of the always-sold-out late night hit *#serials@theflea*. He previously appeared in *The Great Recession* and *Love/Stories* at The Flea. Other recent NY: *Sex* (EST/Youngblood), *Salamander Leviathan* (Ars Nova), *Clown Bar* by Adam Szymkovicz (Rising Phoenix Rep, dir. Kip Fagan), *File Under: Superwolf* by Bekah Brunstetter (ART/NY), *...things i found on craigslist* by christopher oscar peña (Theatre for a New City), and *The Spanish Tragedy* (Red Bull Theatre - Revelation Readings Series). Film credits include: *Mystery Team* (Roadside Attractions/Official Selection Sundance Film Festival) and *Checkout* (HBO US Comedy Arts Festival). BFA: NYU.



# THE CAST

**Liz Tancredi** (Iole, Sheep; u/s Sick Woman) is thrilled to be in her first production at The Flea! Recent credits include *A Christmas Carol* with Manhattan Children's Theater, *Snow White and the Seven Dwarfs* and *Babes in Arms* with The Berkshire Theatre Festival, Landford Wilson's *The Rimers of Eldritch* and Shakespeare's *The Two Gentlemen of Verona* at Syracuse University. Liz holds a BFA in Acting from Syracuse University and spent a semester studying at Shakespeare's Globe in London where she performed in *As You Like It*.



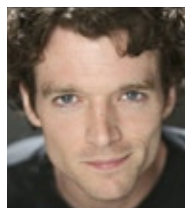
**Will Turner** (Psychopomp) New York: *Cow Play* (NYFringe), *Friends Don't Let Friends* (LTR). While an undergraduate at Yale, he developed and performed a one-man version of *Henry V* (dir. Joseph Roach) and served as artistic director of the undergraduate experimental theater group.



**Tony Vo** (Eurysakes; u/s Eteokles) This is Tony's debut at The Flea and in NYC! Regional Theater credits include: The Fox in *The Little Prince* (Colorado Shakespeare Fest) and Chip Tolentino in *The 25th Annual Putnam County Spelling Bee* (The Hangar Theater). Tony studied acting at Ithaca College and is a Eugene O'Neill Theater Center alumni.



**Nate Washburn** (Aegisthus; u/s Odysseus) is thrilled to be a member of The Bats and to be making his Flea debut in *These Seven Sicknesses*. He was recently seen as Laertes in *Hamlet* and Claudio in *Much Ado* at the American Globe Theater and in the New York premiere of *Books on Tape* at the 2011 Fringe Festival. He has been in several films and commercials and played the murderer Bennie Frier in a recent episode of *Wicked Attraction*.



**Akyiaa Wilson** (Clytemnestra; u/s Dejanira) is a proud Bat having premiered in 2009's *Girls In Trouble* and coming off 15 riotous weeks of #serials@theFlea. She is most proud of her past work as Feste in *12th Night of the Living Dead*, and as a part of the N.Y.'s Fringe Festival in her co-creation, *No Such Roses Sonnets that are Nothing like the Sun*. Other standouts include Shakespeare in the Parking Lot's *Measure for Measure*, at the Public Theater, in the 52nd St. Project's *O, No You Didn't*, as Hermia in *A Midsummer Night's Dream*, and Mother in *Blood Wedding*. She holds a BFA from Syracuse University.



# THE CREATIVE TEAM

**Sean Graney** (Playwright) is happy to have his play at The Flea. He is a freelance director/playwright in Chicago, and is the Founding Artistic Director of The Hypocrites, with which he has directed many shows. He was a participant in the NEA/TCG Career Development Program for Directors 2004/06. He won two Jeff Citations for Direction, and garnered several Jeff Nominations for adaptation. In NY, as a playwright, *The 4th Graders Present an Unnamed Love-Suicide* was presented at 59E59. He wishes to thank you for spending your time and money on theater. If you care to know more, please send an email: sean@seangraney.com

**Ed Sylvanus Iskandar** (Director) is Founding Artistic Director of Exit, Pursued by a Bear (EPBB), a socially immersive theatrical experience where the party is the play. Recent directing work includes Amy Freed's *Restoration Comedy*, Sean Graney's *These Seven Sicknesses*, Jason Williamson's *Lesser Mercies* and *Arok of Java*, *King Lear* and *Dido, Queen of Carthage* (the latter two starring Billy Porter). Ed has staged over ninety plays in the U.S. and U.K., including Kooman and Dimond's *Homemade Fusion* starring Tony nominee Patina Miller (Zipper Factory); *Goat Song for Asa Jacobs* (Oregon Shakespeare Festival); *The Red Umbrella* (Drama League); *Translations* and *Don Juan* (Stanford Summer Theater); and *Brand, After Miss Julie* and *Don Carlos* (Carnegie Mellon). Ed has taught courses in acting, directing, opera, Shakespeare and theatre production at Stanford and Carnegie Mellon. Ed is an Emerging Artist Fellow with the New York Theatre Workshop, a Drama League Directing Fellow, a two-time Resident Directing Fellow at the Oregon Shakespeare Festival, an alumnus of the Lincoln Center Directors Lab, and the proud recipient of the Robert M. Golden Medal for distinguished achievement in the creative arts and the Sherifa Omade Edoga Prize for work involving social issues. BA, Stanford University and MFA, Carnegie Mellon University. ed@epbb.org

**Julia Noulin-Mérat** (Set Design) is the principal designer at Noulin-Merat Studio, a NYC design firm that has designed over a 100 productions. Her theater work includes *Penelope of Ithaca*, *November*, *Rocky Horror Show* with The Hangar Theatre; *Moonchildren*, *Dark Rapture*, *The Argument* with The Attic Theater; *Lesser Mercies*, *These Seven Sicknesses*, *King Lear*, *Arok of Java* with Exit, Pursued by a Bear. Her opera work includes *Madama Butterfly* with El Paso Opera and Opera New Jersey; *Così fan Tutte*, *Lucia di Lammermoor* with Commonwealth Opera; *Say It Ain't So Joe*, *Heart of a Dog*, *Loose Wet Perforated* with Guerilla Opera; *Xerxes* with the Academy of Music; *The Telephone*, *LRRH* with Opera Boston and *Carmen* with Buck Hill Skytop Music Festival. Her television work includes *Guiding Light* (CBS) and *Inside the Actors Studio: Jim Carrey* (Bravo). She is the resident set designer for The Attic Theatre and Exit, Pursued by a Bear and the Director of Design and Production for Guerilla Opera. www.noulinmerat.com

**Carl Wiemann** (Lighting Design) is a lighting designer for theater, dance, opera, and architecture. He was a member of the 2011 Lincoln Center Theater Directors Lab, is resident lighting designer at Exit Pursued by a Bear, and lighting director for dance company The Chase Brock Experience. In 2009, Carl founded Sense, an emerging practice in architectural lighting design that specializes in high-end retail, residential, institutional, hospitality, and public realm architectural design. Building on his freelance theater and architectural design affiliations, Carl is also a member of the Board of Directors of the Designers' Lighting Forum of New York (DLFNY), an organization devoted to promoting the power of light in design. carlwiemann.com | cwiemann@gmail.com

**Loren Shaw** (Costume Design) has been working in theater and film in NYC for the last 3 years after finishing her graduate degree at Carnegie Mellon University. She is an active collaborator with Exit Pursued by a Bear and has worked on various projects including *Mirror Mirror* (assistant to Eiko Ishioka), *Bourne Legacy* (costume assistant), *Freckleface Strawberry* (assistant designer/ New world Stages), *The Duchess of Malfi* (assistant designer/ Red Bull Theatre), *Everything, Nothing, Always WALLA!* By Emily Mast (costume designer / part of PERFORMA 09). Special thanks to Adam, Sarah, Celina, Kenny, Kenisha and the Bourne team.

# THE CREATIVE TEAM

**Patrick Metzger** (Sound Design) is a freelance composer and sound designer living in New York City, and is currently The Flea Theater's Resident Sound Designer. His previous work at the Flea includes *Kathy Supové & the Electric Sheep* (Sound Technician), *She Kills Monsters* (Assistant Sound Designer), and *Future Anxiety* (Sound Designer). He has also designed sound for *The Birthday Boys* (Access Theater), *Shipwrecked* (Penguin Rep), *Skin Flesh Bone* (The Secret Theatre), *Trixie and Monkey: All or Nothing* (Ars Nova), *Dreamers of the Day* (Roy Arias Theater Complex), and *Billy Carver and the Children in Mind* (Manhattan Theatre Source). He was assistant sound designer for *Middletown* (Vineyard Theatre) and *Divine Sister* (Soho Playhouse). His original music has been featured in *Motherhood Out Loud* (Hartford Stage), *Work:Dance:Display* (Greenwich House Music School), *Amuse Bouche NYC*, *A Doctor In Spite of Himself* (Bent Quill Players), and *Alice Sit By the Fire* (Adaptive Arts at IRT Theater). Visit [www.myspace.com/patrickmetzger](http://www.myspace.com/patrickmetzger). Contact: [patrick.ross.metzger@gmail.com](mailto:patrick.ross.metzger@gmail.com)

**Michael Wieser** (Fight Director) is thrilled to be working with The Flea Theatre for the first time. He is the resident Fight Director and fellow actor at Exit Pursued By a Bear Theatre Collective. New York: *These Seven Sickenesses*, *Lesser Mercies*, *King Lear* with Billy Porter, Regional: *Comedy of Errors Williamstown* (Theatre Festival), *The War Boys* (WTF), and *Tape* (WTF). Michael draws inspiration from his backgrounds in the Filipino martial art of Kali, American boxing as well as contemporary dance and ballet. He is very proud of every single actor in this company and has watched them turn into warriors.

**David Dabbon** (Music Director) Broadway: *Sondheim on Sondheim* (Additional Orchestrations/ Grammy Nomination -Cast Album); *She Loves Me* Roundabout Benefit Concert (Dance Arranger); *Audra McDonald at Carnegie Hall* (Carnegie Hall - Orchestrator). *Sweet Bye and Bye* (Original Cast Album: PS Classics - Vocal Director). Composer: *All God's Creatures* (Film); *Alison Is Having a Really Bad Day* (T.V. Pilot); *All Happy Housewives*, *Sleep With the Milkman*, (Musical) *Greetings From Coco-Boco!* (Children's Musical). Education: MM Carnegie Mellon University, BM Hartt School of Music.

**Greg VanHorn** (Dramaturg) is the co-founder, literary director, and resident dramaturg for Exit, Pursued by a Bear. For EPBB, he was production dramaturg for *Dido*, *Queen of Carthage*, *Restoration Comedy*, *These Seven Sickenesses*, *Lesser Mercies*, *Arok of Java*, and for Amy Freed's workshop of *Right to the Top*. He has worked for Warner Brothers Studios, Ars Nova Theater (NYC), and the Sundance Institute, in addition to serving as dramaturg and literary associate for Stanford Summer Theater. Other projects with Ed Iskandar include *The Red Umbrella*, *Don Carlos*, *Goat Song for Asa Jacobs*, *Ether Steeds* and *BoyGirlBoyGirl*. Email: [greg@epbb.org](mailto:greg@epbb.org)

**Ed Herman** (Stage Manager) is excited to be working with The Flea and The Bats. Additional credits- Stage manager: *The Dumbwaiter* (NAATCO), *Lascivious Something* (Les Vignes), *Heroes and Other Strangers* (Fringe NYC 2011), *Romeo & Juliet* (SinkorSwim Rep), *The Great Divide* (Metropolitan Playhouse); Production assistant: *Beyond Therapy* (Westport Country Playhouse), *The Whipping Man* (MTC), *The Little Foxes* (NYTW), *Bachelorette* (Second Stage), *A Boy and His Soul* (The Vineyard).

**Kara Kaufman** (Stage Manager) is a New York City native and recent Harvard grad. She is thrilled to return to The Flea, where she has also stage managed *American Sexy*, *The Great Recession*, *Love/Stories* (or, but you will get used to it), and *Kaspar Hauser*. Other recent credits include *Lush Valley* (HERE), *Paternity* (Cherry Lane), *Hold Music* (Living Theatre), *One Arm and a Leg* (Theater for a New City) and *water; or, the secret lives of objects* (14th Street Y Theatre). Many thanks and much love to the T7S team, her amazing friends, and mom.



# THE CREATIVE TEAM

**Amy Jo Jackson** (Production Voice/Speech Coach): As dialect coach: *Looking at Christmas* (The Flea Theater); *The Irish Plays* (The Cell); *Shout! The Mod Musical* (Lake Dillon); *Cabaret* (BoCo); *Savage In Limbo* (The Bowery Electric - Appolonia Productions). Also a professional actor/singer, Amy Jo has been a private acting, dialect, and voice/speech coach since 2004. Students can be seen in various commercials, films, regional theatre, and national tours, as well as Off-B'way and in Broadway's *Chicago*, *Evita*, and *Priscilla, Queen of the Desert*. [www.amyjojackson.com](http://www.amyjojackson.com)

**Tom Costello** (Resident Director) is a freelance director in NYC. At Pipeline Theatre Company he has directed *Sleepless City* by Tim Chawaga, *Shakespeare the Dead* by Alex Mills (also Dream Up Festival) and *Bubble and Squeak* by Evan Twohy which was a finalist in the Samuel French Off-Off Broadway Festival. He has directed numerous productions for Atlantic Acting School where he is also a faculty member. This summer, he assisted on *Bluebird* at the Atlantic Theater Company and has served as Associate Artistic Director for Babel Theatre Project. BFA in Drama from NYU/Tisch.

**Benjamin Kamine** (Resident Director) is a stage director from Los Angeles. Recent directing credits include the world premieres of *Wars and Whores* by Jeffrey Barg and Sarah Ollove (Philly Fringe Pick), *Gutter Space* by Keith Boynton, *Boundaries* by Elizabeth Jordan, and *Cheesesteak Latkes* by Matt Ocks. He directed the west coast premiere of *The Gift Horse* by Lydia R. Diamond (*Stick Fly*) and his cross-cultural production of Sophocles' *Philoctetes* went to India in 2008. Kamine received the StageSceneLA Award for Outstanding Direction of a Comedy-Drama in 2010 for his production of *Seascape with Sharks and Dancers* by Don Nigro. He is the Resident Director at the Jewish Plays Project and is a member of the Lincoln Center Theater Directors Lab. He also works throughout New York as a sound, lighting, and projection designer, and is a Guest Artist at the Lab School for Collaborative Studies.

# THE FLEA STAFF



**Jim Simpson** (Artistic Director) is the Founder and Artistic Director of The Flea Theater (2004 Drama Desk cited for Downtown Adventurous Theater). Two-time OBIE-award winner, 2002 National Board of Review Excellence in Filmmaking, and cited for artistic leadership in Downtown New York by the Lower Manhattan Cultural Council in 2002. Jim has directed over 70 works for the theater and has also directed for film and television. Venues include nine seasons at the Williamstown Theater Festival, Alley Theater, Hartford Stage, Yale Rep, Actor's Theater of Louisville, Eisenhower Theater at the Kennedy Center, Lincoln Center, Playwrights Horizons, EST, CSC, MCC, the London International Theater Festival and the Melbourne Fringe Festival. Jim was a child actor in his hometown of Honolulu, as a teenager worked with Jerzy Grotowski in Poland, and holds degrees from Boston University School for the Arts and the Yale Drama School. Most recently, Jim directed A. R. Gurney's *Crazy Mary* at Playwrights Horizons, Will Eno's *Oh, The Humanity...*, the revival of Peter Handke's *Offending The Audience*, Addison's *CATO*, Thomas Bradshaw's *Dawn*, Gurney's *A Light Lunch* and *Office Hours*, Will Eno's *UNUM* as part of The Flea's *The Great Recession*, Jonathan Reynolds' *Girls in Trouble*, Bathsheba Doran's *Parents' Evening* & Steven Banks' *Looking at Christmas*.



**Carol Ostrow** (Producing Director) joined Jim Simpson at the helm of The Flea in 2001 & *The Guys* marked her return to Off-Off-Broadway. She was the OBIE-award winning Producing Director of the Classic Stage Company, where she produced *The Merchant of Venice*, directed by Jim Simpson, the world premiere of Ezra Pound's *Elektra*, directed by Carey Perloff as well as the acclaimed 30th anniversary production of Pinter's *The Birthday Party*, among others. She was the founder and original Producing Director of The Powerhouse Theater at Vassar, now in its 24th season. In between, she has also been an adjunct professor of theater at Vassar College, Chatham College and McGill University. For The Flea, Carol has produced A.R. Gurney's *O Jerusalem*, *Mrs. Farnsworth*, *Screen Play*, *Post Mortem*, *A Light Lunch* and *Office Hours*, Elizabeth Swados' *JABU* and the Swados/Erin Courtney collaboration *Kaspar Hauser*, Will Eno's *Oh, The Humanity and other exclamations*, Mac Wellman's *Cellophane* and *Two September*, Roger Rosenblatt's *Ashley Montana Goes Ashore in the Caicos...* and *The Oldsmobiles*, Adam Rapp's *Bingo with The Indians*, Itamar Moses' *Love/Stories (or But You Will Get Used to It)*, Beau Willimon's *Lower Ninth*, Thomas Bradshaw's *Dawn*, Polly Draper's *Getting Into Heaven*, Len Jenkin's *Like I Say* and *Margo Veil*, Talking Band's *The Parrot*, the holiday extravaganza *'Twas the Night Before*, short plays by Christopher Durang, among others, the recent Flea commission, *The Great Recession*, an evening of short plays by Thomas Bradshaw, Sheila Callaghan, Erin Courtney, Will Eno, Itamar Moses and Adam Rapp, Jonathan Reynolds' *Girls in Trouble*, Bathsheba Doran's *Parents' Evening*, and Steven Banks' *Looking at Christmas*. She is also behind the numerous dance and music programs presented at The Flea. Carol is a graduate of Vassar College and the Yale Drama School. She is a board member of LAVA, an acrobatic dance collective, serves on the President's Advisory Council of Vassar College and the Board of Advisors of the Yale Drama School, and is one of the newest trustees to one of the oldest congregations in New York City, Central Synagogue. Married and the mother of four incredible young adults, she and her family count Pittsburgh, London, Montreal and now New York City once again as home.



**Beth Dembrow** (Managing Director) has been with The Flea since 2007, working on all mainstage and downstairs productions including *Los Angeles* by Julian Sheppard, *Oh, The Humanity and other exclamations* by Will Eno, *Lower Ninth* by Beau Willimon, *Kaspar Hauser* by Liz Swados & Erin Courtney, *Love/Stories (or But You Will Get Used to It)* by Itamar Moses, *The Great Recession*, an evening of short plays by Thomas Bradshaw, Sheila Callaghan, Erin Courtney, Will Eno, Itamar Moses and Adam Rapp, *Girls in Trouble* by Jonathan Reynolds, *Parents' Evening* by Bathsheba Doran. Prior to The Flea, she spent two and half years at Lincoln Center Theater where she worked on all mainstage and second

stage productions, including the Tony-Award winning productions, *The Light in the Piazza* and Tom Stoppard's *The Coast of Utopia*. Other management experiences with Snug Harbor Productions (Steven Chaikelson and Brannon Wiles) include: *Elaine Stritch at Liberty* (Broadway); *Harlem Song*, Salman Rushdie's *Midnight's Children* (Apollo Theater); *Private Jokes*, *Public Places*; *The Tricky Part* (Off and Off-off Broadway). Beth holds a BA from Cornell University and an MFA in Theater Management and Producing from Columbia University.

**Liz Blessing** (Technical Director) Liz is happy to have found a home at The Flea Theater. Before coming to the Flea she was the Draftsperson for I. Weiss, creating construction drawings for rigging system installation on Broadway and beyond. Previous to that she was an Engineering Assistant for City Theatrical, Inc, where she helped test the W-DMX system. Liz has a BS from The College of William and Mary.



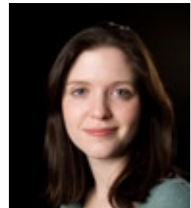
**Penn Genthner** (Development Manager) joined the staff of The Flea Theater after over five years at the Pasadena Playhouse in Southern California, where he held the titles of Grants Manager, Tour Coordinator, and Archivist. In these various roles, he helped the company secure major state and institutional funding and deepen public knowledge about its rich and under-celebrated history. As the Playhouse's historian, Penn was frequently invited to speak about theater history for various clubs and community organizations, including serving as a guest lecturer at Occidental College. He has worked around the country as Development Consultant to the LA-based Furious Theatre Company and Nom de Guerre Theatre Guild, as well as at Minnesota's Guthrie Theatre and the Park Playhouse in Columbus, OH. He has served on the Board of Directors of the Pasadena Playhouse Alumni & Associates and the New York non-profit Caring Cameras. He graduated from Bennington College in 2005 with a BA in Theater.



**Chris Massimine** (Marketing & Membership Manager) is an award-winning producer who's been involved in the management and marketing of productions ranging from festivals through Broadway. He's worked with Roundabout Theatre Company, The Dramatists Guild of America, LAByrnth Theater Company, Charlotte Wilcox Company, NIKO Companies, Personal Space Theatrics, The Margaret Cho Show, Theater Resources Unlimited, Origin Theatre Company, and WPPAC. His marketing consultant work in mainstream entertainment has led to successful promotional campaigns for musical artists including Jason Mraz, Amy Winehouse, Jenny Lewis and with companies such as Viacom and GE.



**Sarah Wansley** (Company Manager) recently directed an ensemble for *#serials@theflea*. As a Directing and Producing Assistant at the McCarter Theatre, Sarah assisted such inspiring directors as Tina Landau, Emily Mann and Roger Rees, and directed a ten-minute play as part of McCarter's Youth Ink festival. She is also the founding Artistic Director of Aporia Theater. With Aporia, Sarah has directed and produced *Follow Me Down* at The Flea, *The Disappearance of Jonah* in the DC Fringe Festival, *Bare Naked Drama* at the Cherry Pit and Jimmy's No. 43, and *No Exit* at the Cherry Lane Studio. Sarah graduated summa cum laude from Columbia University with a BA in English Lit and is a member of the 2011 Lincoln Center Directors Lab.



**Kyle Crose** (Assistant Technical Director) has worked as the Technical Director for the St Louis Ballet, and has installed theatrical lighting systems, fly systems, sound, and curtain systems all over the Kansas City area. He was technical director of three spaces in New Orleans with the Jefferson Performing Arts Society. This is his first permanent position in NYC and he is proud to be working with such a talented crew. In his spare time Kyle likes to run, not from anything in particular but for reasonably long distances and at reasonably high speeds. Kyle is still an active freelancer and also a strong believer in shameless self promotion, so if you need any technical theatre work done, don't hesitate to e-mail me!

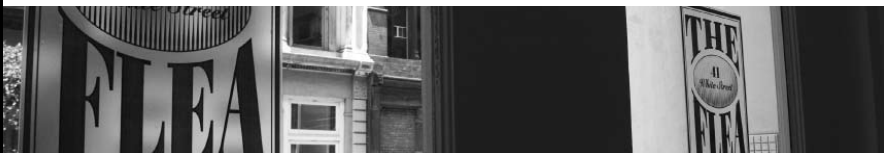


# WHAT IS THE FLEA?

The Flea is our theater: two small, unique performance spaces, located here at 41 White Street in Tribeca. The Flea regularly presents diverse, cutting-edge, and multi-disciplinary work, and has rapidly become a vital part of the city's cultural landscape. A state-of-the-art performance facility, The Flea has presented over 100 plays, 50 dance events, and 50 concerts since its founding sixteen years ago.

With talent, dedication, and a black belt in shoestring budgeting, we have reached our fifteenth season. Founded in 1996 by a group of acclaimed downtown theater artists, the award-winning Flea Theater was originally formed out of the purely artistic impulse to create "a joyful hell in a small space." We quickly became a downtown beacon for creative artists of every discipline, and soon a more formal mission was born: to raise the standards of Off-Off-Broadway for artists and audiences alike. Comfortable seats and decent dressing rooms became as much a part of our mission as talented artists and big ideas.

Now, in 2012, with a special achievement Drama Desk Award, an Otto, and two OBIE Awards to our credit, The Flea continues to embody the spirit of adventure and experiment that has defined Off-Off-Broadway since its inception. Part playground, part laboratory, and part training ground, we are home to emerging artists developing their ideas, mid-career artists solidifying their identities, and established artists going in new directions. With the continued participation of our founders and an ever-growing community of diverse and talented artists, our aim is to keep New York theater vital and to represent the wide range of what is possible Off-Off-Broadway.



## WHO & WHAT ARE THE BATS?

The Bats are our young resident company. Each year, over a thousand young actors audition for a place in this unique company. The Bats perform in long runs of challenging classics and new plays. Not a school, but a repertory company, The Bats also work to support all of the visiting artists at The Flea.



## WHAT IS OFF-OFF-BROADWAY?

Dating back almost fifty years, Off-Off-Broadway is distinguished by a spirit of adventure. It is where established artists go to take risks that the commercial arena does not allow, and it is where young, aspiring writers, directors, and performers learn their craft, develop their talents and begin their professional careers. Non-institutional and resolutely non-commercial, Off-Off-Broadway is as eclectic and varied as the city of New York. While other cities enjoy alternative theater and performance, none have communities as large and vital as New York's Off-Off-Broadway. Welcome and enjoy!

Visit [www.theflea.org](http://www.theflea.org) for videos, photos, and information on all things Flea!  
Find "The Flea Theater" on Facebook, Twitter & YouTube

# THE BOARD OF DIRECTORS

## **Chair**

Paul J. Elston

## **President**

Jim Simpson

## **Secretary**

Carol Ostrow

## **Treasurer**

Emmeline Wexer

Kyle Chepulis

Robert Eimicke

Michael Graff

Jamie Harris

Douglas Liebhafsky

Andrea Miller

David Prittie

Bernadette Speech

Basil Walter

Sigourney Weaver

Katherine Weinhoff

Davis Weinstock

# THE FLEA CIRCUS CAMPAIGN

Fifteen years ago The Flea's founders undertook an artistic experiment, renting an old TriBeCa factory in the wilds of Lower Manhattan and opening the doors to the most iconoclastic and talented artists they could find. Since then The Flea has evolved into an award-winning theater known for presenting the very best of Off-Off-Broadway theater, music and dance.

We have also become an emblem for the resilience of Lower Manhattan, drawing more than 150,000 people to the area since the 9/11 attacks. To continue in that leadership role, we recently purchased a site nearby that is soon to become our permanent new home. Our goal is to continue producing our own intimate and exhilarating work while providing stability to dozens of other artists and performance groups. We are grateful to the following for their lead gifts to the project:

## \$1,000,000 +

Anonymous

City of New York, Manhattan Borough President's Office, at the request of Scott Stringer

Empire State Development Corporation, at the request of Governor George E. Pataki

The Lower Manhattan Development Corporation

NYC Executive Funds

## \$500,000 – \$999,999

Michael Graff & Carol Ostrow

A. R. & Molly Gurney

New York City Council,

at the request of Jimmy Van Bramer

New York City Council, at the request of Margaret Chin

The September 11th Fund,

through the Office of Mayor Michael R. Bloomberg

## \$250,000 – \$499,999

Anonymous

Douglas Liebhafsky & Wendy Gimbel

Sigourney Weaver & Jim Simpson

## \$100,000 – \$249,999

Kyle Chepulis

Paul J. Elston & Frances Beinecke

International Creative Management, Inc.

David Prittie

State of New York, at the request of State Senator Tom Duane

Basil Walter

Davis Weinstock & Elizabeth Hawes

## \$50,000 – \$99,999

Walter Howley

Lower Manhattan Cultural Council

Katherine & Samuel Weinhoff

## \$25,000 – \$49,999

Jim & Suzy Cameron

Massey Knakal Real Estate

New York State Council on the Arts

Daryl Roth & Jordan Roth

Dan & Sue Rothenberg

Edward Trach

## \$1,000 – \$24,999

Roger Berling

Tom & Meredith Brokaw

Beth Burnam

Arthur & Linda Carter

Al & Roma Connable

Blythe Danner

Emma Sheaffer Charitable Trust

John & Karen Erickson

Joseph F. Godfrey & Keith Halstead

James & Toni Goodale

Mary G. Gurney

Nancy & Alan Horn

Mark Kaplan

Kent Lawson & Carol Tambor

Paige & Nicki L'Hommedieu

Edward McKinley & Kathleen Lavidge

Andrea & George Miller

Michael Miller

Mike Nichols & Diane Sawyer

Jonathan Sheffer

Bernadette Speach & Jeffrey Schanzer

Bruce Sunstein

David & Deborah Trainer

Victoria G. Traube

Emmeline Wexer

## Under \$1,000

Robert Ackerman & Carol Weston

Alliance of Resident Theatres/New York

Helen W. Brann & Faith Stewart-Gordon

Christopher Bumcrot & Evelyn R. Gurney

Peter & Panda Coley

Mary & Gordon Gould

Benjamin S. Gurney & Ann Baskowski

George G. & Constance W. Gurney

Stephen R. Gurney

Howard Kaminsky

Claire W. Labine

Frederick S. & Amy G. Nicholas

Alan Shayne & Norman Sunshine

Sally Wardwell

For more information on our Capital Project, please contact Carol Ostrow, (212) 226-0051 x104

State of the Arts



NYSCA

Lower  
Manhattan  
Cultural  
Council

The September 11th Fund





# FOUNDATIONS, CORPORATIONS, GOVERNMENT & INDIVIDUAL SUPPORT

## \$50,000+

Bloomberg Philanthropies

## \$25,000 - \$49,999

National Endowment for the Arts  
NYC Department of Cultural Affairs  
Warburg Pincus

## \$10,000 - \$24,999

Anonymous  
Edward and Sally Van Lier Fund of the  
New York Community Trust  
Fan Fox and Leslie R. Samuels Foundation  
FDNY Foundation  
Steven and Donna Gartner  
Harold and Mimi Steinberg Charitable  
Trust  
Prospect Hill Foundation  
Daniel E. Rothenberg  
Shubert Foundation

## \$5,000 - \$9,999

Achilles Foundation  
Bank of America Merrill Lynch  
Barbara and Richard Booth  
Monica and Stefano Corsi  
LeBaron Foundation  
Douglas Liebhafsky & Wendy Gimbel  
Lucille Lortel Foundation, Inc.  
New York State Council on the Arts  
Nick and Julie Sakellariadis

## \$2,500 - \$4,999

Angelou Family Fund  
Axe-Houghton Foundation  
James Cameron  
Larry Condon  
Dorothy Strelsin Foundation  
Foundation for Contemporary Arts  
The John Golden Fund  
Andrea & George Miller  
Gigi Sharp and George Gilpin  
Elizabeth Duggal Taghipour

## \$1,000 - \$2,499

Gay & Harry Abrams / Abrams Artists  
Agency  
Catherine and Fred Adler  
American Express – Fall Downtown  
Barbara Bell Cumming Foundation  
Eric Seiler & Darcy Bradbury  
Jacqueline Brody  
Dramatists Guild Fund  
Edith Meiser Foundation  
Robert Eimicke and Roslyn Black  
Harold Smith and James Franzen  
Friars Foundation  
Jane R. Gelfman  
JoAnn and Bernard Kruger  
Carla Solomon and Nino Magliocco  
Laurie and Jay Mandelbaum  
Randolph and Rona Nelson  
William Plapinger and Cassie Murray  
Mary Ann & Bruno A. Quinson

Wendy M. Siegel  
Harry and Jennifer Stout  
Cynthia King Vance and Lee Vance  
Mary and Jerome Vascellaro  
Emmeline Wexer

## Partners (\$500+)

Catherine Cahill and William Bernhard  
George and Jane Bunn  
William W. Cobbs  
Fred and Susan Foster  
Bobby and Vicky Freeman  
Mia Goldman and Michael Rotblatt  
Elena and Everardo Goyanes  
Michael Hackett  
Mr. & Mrs. Bernard Kamine  
Jane Willkomm and Marc Lesnick  
Walt and Diane Looney  
Payne Middleton  
New York Foundation for the Arts, Inc.  
Douglas, Nancy and Molly Elena Ostrow  
Laurence Hazell and Mimi Quillin  
Steven Rand  
Sarah Beinecke and Craig Richardson  
Saluggi's  
Jeremy Smith  
Robert G. Thacker  
Edward Trach  
Russ Weigel and Jane Reynolds

## THE FLEA I.P.'S

In June of 2009, we established a new initiative called The Flea I.P.s. The Flea Theater represents a wide range of theatrical possibilities and our Flea I.P.s are the people who make these possibilities a reality. Comprised of our most loyal supporters, our Flea I.P.s participate in exclusive events that provide insider access, including private talk-backs and intimate dinners with the artists that call us home – just to name a few of the perks. The Flea I.P.s have committed their support for three full years, generously pledging \$5,000 each year.

Psssst! Interested? We'd love to welcome you to The Flea I.P.'s, too!

Please contact **Penn Genthner** at 212.226.0051 x 110 or [penng@theflea.org](mailto:penng@theflea.org) for more information.

The Flea proudly salutes our founding Flea I.P. members & thanks them for their unwavering support:

Frances Beinecke

John Beinecke

Ginny Benzak

Lois Chiles

Douglas Durst

Paul Elston

Heidi Ettinger

Ali Wambold & Monica Gerard-Sharp

Michael Graff

Celeste Guth

Jeanne & Tom Hardy

Wendy & David Hashmall

Loretta Hennessey

Shannon Wu & Joseph Kahn

Eleanora Kennedy

Sahra Lese

Caroline Niemczyk

Carol Ostrow

Peter Joseph & Elizabeth Scheuer

Catherine Schreiber & Miles

Ruthberg

Melissa Vail & Norm Selby

Nanahya Santana & Hume Steyer

Katherine & Sam Weinhoff

Stephen & Cathy Weinroth

Davis & Betsy Weinstock



## FLEA MEMBERS

**Donors (\$250 - \$499)**

Edward Albee  
 Rosanne and Ed Braun  
 Nancy and Alan Brenner  
 Barbara LeMay Darring  
 Joanna B. Dean  
 Kendra Decious  
 Jamie DeRoy  
 Sue B. Dorn  
 John and Deborah Evangelakos  
 Bruce Goodrich  
 Mrs. James B. Gubelmann  
 Lynne Halliday and B.H. Barry  
 Joanne Jacobson  
 Jerome Florists  
 Carol Kaplan  
 Peter Rose and Alicia Kershaw  
 Mark and Madeline Lebwohl  
 Gregory Long  
 Kate H. Marber  
 Seth Moskowitz  
 Roberta Weiss and Mitchell Rabinowitz  
 Ellen and Norman Roth  
 Kathleen E. Shannon  
 Jim Simpson  
 Eric Somers  
 Stephanie Garry and Art Tatge  
 John E. Wulp  
 Dan and Cammy Zamlong

**Contributors (\$100 - \$249)**

Anonymous (2)  
 Darius Babanoury  
 Richard and Susan Baldwin  
 Robert and Betsy Barbanell  
 Barbara and Gary Bloom  
 Sarah Bond  
 Lesley Broder and Jeff Picarello  
 Terry Gruber and Claudia Brown  
 Susan and Paul Buck  
 Ronni and Ron Casty  
 Jeffrey and Susan Chase  
 Frank Christopher  
 Lawrence and Ronnie Cohen  
 Robert S. Cook, Jr.  
 Ellen Davis  
 Laurie Amory de Grazia  
 Judy and Ira Dembrow  
 Frank and Helga Doyle  
 Sara and Fred Epstein  
 A. Figmat  
 George L. Fleming

Cheryl and Henry Frommer  
 David Gittleman  
 Betty and Josh Goldberg  
 Mary and Gordon Gould  
 Bonnie Graff  
 Faith Hackett  
 Julia B. Hall  
 John and Diane Haney  
 Mary R. Hardin  
 Anne and Gordon Herral  
 Harris and Randee Horowitz  
 Indiana Market and Catering, Inc.  
 Lawrence P. Kenny  
 Klaus and Peggy Lackner  
 Stephen and Tina Lang  
 Carole Leavey  
 Mark and Susan Lippitt  
 Liz and Woody Littlefield  
 Giselle Mahoney  
 Sheila and David Manischewitz  
 Stephen and Carolyn McCandless  
 Maureen McSherry  
 Doreen Memolo  
 Judith Milhous  
 David Mirkin  
 Daria and David Moore  
 Charles and Molly Mosely  
 Drs. Benjamin Natelson and Gudrun Lange  
 Bruce Colbath and Carol O'Rourke  
 Harriet Orley  
 Roberto F. Ortiz  
 Chip and J.R. Ossman  
 Judy and Gary Pasquinelli  
 Chris and Rata Patsiga  
 Paul, Weiss, Rifkind, Wharton and Garrison Charitable Gift Fund  
 Jody and Gary Peterson  
 Christopher and Lynne Ramsey  
 Colin Ramsey  
 Karen and Andy Rhodes  
 Margaret Ruddick  
 Olivia and Steve Russell  
 Peter and Lee Scott  
 Sharon Semenza and Bill Robinson  
 Eleanor W. Shakin  
 Jane Dawson Shang  
 Jane and Greg Smith  
 Fran Smyth

Leonard Hellenbrand and Judith S. Solomon  
 Scott and Dhuane Stephens  
 Deidre Ann Sullivan  
 Thomas Synan  
 Missie Taylor  
 Susan and Charles Tribbitt  
 Peter and Jane Giacomini Van Olinda  
 Carol and Robert Walker  
 Edward B. Whitney  
 Susan Wilen  
 Susan J. Wright  
 Ruth S. Zachary and Eve Z. Mykytyn

**Supporters (\$50 - \$99)**

Joseph Allen  
 Anonymous (3)  
 Susan Aranoff  
 Bonnie Barenholtz  
 Stuart L. and Mary V. Bell  
 Drs. Kenneth Brooks Wells and M. Christina Benson  
 Eleanor S. and Robert J. Berlin  
 Susan Crowe  
 Edla Frankau Cusick  
 Josh and Kerry Dorf  
 M. Burton Drexler  
 Annette Ferstenberg  
 Charles Forma  
 James Fraser and Katherine Hanson  
 Elizabeth Garnsey  
 Melissa Gibbs  
 David Gilbert  
 Rev. James L. Gill  
 Fiona Graff and Martin Kurzweil  
 Susan and Alan Guma  
 Arthur Haddock  
 Kathleen Halvey  
 Ryan Hart  
 Anne Hennessey  
 Jim Hoffman  
 Nan Hoffman  
 Norman Holland  
 Paul Howard  
 Stuart N. Hutchison III  
 Benjamin Kamine  
 Carol W. Kelley  
 Jo Ann Kessler  
 Gene Kilik  
 David and Susan Kraus  
 Rosanne Kumins

Pam Laskin and  
 Ira Reiser  
 Rebecca Lehrer and Neil Alger  
 Warren Liebold  
 Mark and Katherine Linder  
 John Harrison  
 Gail Lussier  
 Janet Mardfin  
 Todd and Lori Rosen  
 Laura Sametz  
 Sarah Jane Smedley  
 Andre Spears  
 Jeanne and Steven Stelman  
 Debra Toppeta  
 Phyllis Trager  
 Laurence Traub  
 Clarke, Peggy and Claire Utermohle  
 Judith Wink and Michael Zumoff  
 Dale and Robert Zeide

Special thanks to our \$25 members

*List as of January 16, 2012*

# COMING SOON

*The Flea Theater presents*

## DANCE CONVERSATIONS 2012

Flea's Spring Dance Festival

March 12-25

curated by Nina Winthrop and Taimi Strehlow

**Dance Conversations** is a free performance and discussion festival that presents works-in-progress by dance artists experimenting with new ideas and new forms. Each performance event in the series features the works of 4 emerging and mid-career choreographers. Film nights feature over an hour of dance films by emerging and celebrated filmmakers. Each performance is followed by an open discussion between the artists and the audience, moderated by guest choreographers and other leaders in the field of dance.

## Like what you see at The Flea Theater?

*Be sure to find us on Facebook and Twitter.*

[www.facebook.com/thefleatheater](http://www.facebook.com/thefleatheater)

[www.twitter.com/thefleatheater](http://www.twitter.com/thefleatheater)

*We want to learn more about you and stay in touch. Tell us what you like, ask questions, voice concerns, engage with The Bats, engage with the staff, view exclusive content and opportunities for contests, discounts, and more.*

## FLEA REWARDS

Use your Flea Member Card or ticket stub to take advantage of these special offers from our downtown partners.

### **Macao Trading Co (311 Church St.)**

917-848-0117 / [macaonyc.com](http://macaonyc.com)

Make a reservation to receive a complimentary pitcher of Sangria.

### **Stuzzicheria (305 Church St.)**

212-209-4037 / [stuzzicheriatribeca.com](http://stuzzicheriatribeca.com)

Get 10% off bill when you purchase an entrée at this Italian tapas restaurant.

### **Bread TriBeCa (301 Church St.)**

212-334-0200 / [breadtribeca.com](http://breadtribeca.com)

Get 10% off your bill with entree purchase

### **Petrarca (34 White St.)**

212-625-2800 / [petrarcatribeca.com](http://petrarcatribeca.com)

Receive a 10% discount on your bill at this Italian restaurant & wine bar

### **White and Church (281 Church St.)**

212-226-1607 / [whiteandchurch.com](http://whiteandchurch.com)

Enjoy a free dessert with the order of an entrée

### **Da Mikele (275 Church St.)**

212-925-8800 / [damikele.com](http://damikele.com)

Receive a 10% discount on the bill

### **Souths (273 Church St.)**

212-219-0640 / [southsnyc.com](http://southsnyc.com)

Sip on a complimentary glass of wine with the order of an entrée

### **Billy's Bakery (75 Franklin St.)**

212-647-9958 / [billysbakerynyc.com](http://billysbakerynyc.com)

Buy one cupcake & get the second 1/2 off.

### **Edison Park Fast (15 Worth St.)**

1-888-PARK-FAST / [parkfast.com](http://parkfast.com)

First, get a parking ticket at the garage & then get a special ticket voucher at The Flea box office to park for only \$10.

### **Jerry's Café (90 Chambers St.)**

212-608-1700 / [jerryscafenyc.com](http://jerryscafenyc.com)

Get a free specialty drink with an entrée .

### **Bubble Lounge (228 West Bway)**

212-431-3433 / [bubblelounge.com](http://bubblelounge.com)

Buy 1 drink & get 1 free or get 20% off a bottle of champagne

### **Franklin Cafe (222 West Bway)**

212-343-3838 / [caffe-buon.com](http://caffe-buon.com)

Get 10% off your bill with the purchase of an entrée at this cozy Italian eatery.

### **Churrascaria (221 West Bway)**

212-925-6969 / [churrascariatribeca.com](http://churrascariatribeca.com)

Enjoy 10% off your meal at New York's foremost Brazilian steakhouse.

### **Cercle Rouge (241 West Bway)**

212-226-6252 / [cerclerougeresto.com](http://cerclerougeresto.com)

Have a pre-show dinner at this fine French bistro before 7pm and enjoy 10% off bill.

### **TriBeCa Grill (375 Greenwich St.)**

212-941-3900 / [myriadrestaurantgroup.com](http://myriadrestaurantgroup.com)

Enjoy a complimentary sommelier's choice glass of wine with dinner.

### **Nobu (105 Hudson St.)**

212-219-0500 / [myriadrestaurantgroup.com](http://myriadrestaurantgroup.com)

Enjoy Japanese cuisine at its finest and enjoy a complimentary sommelier's choice glass of wine with dinner.

### **Centrico (211 West Bway)**

212-431-0700 / [myriadrestaurantgroup.com](http://myriadrestaurantgroup.com)

Enjoy a complimentary sommelier's choice glass of wine with dinner.

### **Corton (239 West Bway)**

212-219-2777 / [myriadrestaurantgroup.com](http://myriadrestaurantgroup.com)

Enjoy a complimentary sommelier's choice glass of wine with dinner

**CHECK [THEFLEA.ORG](http://THEFLEA.ORG) OR  
CALL 212-226-0051 x101  
FOR THE LATEST UPDATES &  
DEALS.**

# Become a Member

## THE FLEA THEATER MEMBERS PROGRAM

Get Special Attention. Support The Flea. Be a Member.

Our theater is tiny and we sell out...fast. Members get guaranteed seats plus exclusive discounts, invites, drinks & inside info! All levels of membership are 100% tax-deductible.

### \$25 Member

20% discount on tickets to Flea shows  
No booking or convenience fee  
Guaranteed ticket availability & VIP ticket processing

### \$50+ Supporter

All of the above, plus:  
Exclusive discounts & deals to partner businesses  
Special thanks in Flea programs

### \$100+ Contributor

All of the above, plus:  
Reserved seating for you and your guests  
Exchange tickets up to 24 hours in advance  
Complimentary drinks at our bar before every show

### \$250+ Donor

All of the above, plus:  
Invitations to readings and special events

### \$500+ Partner

All of the above, plus:  
Access to Broadway house seats (purchase necessary)  
Dinner reservations at select Flea partner restaurants

### \$1,000+ Patron

All of the above plus:  
Invitation to select Opening Night performances and cast parties  
Unlimited complimentary drinks  
Autographed show poster for a Flea production of your choice

**CLICK HERE, CALL 212.226.0051 x101,  
or MAIL/FAX the form below to join!**

I WANT TO JOIN THE FLEA! (Please check membership level below)

\$25 Member

\$50 Supporter

\$100 Contributor

\$250 Donor

\$500 Partner

\$1,000 Patron

NAME (as should be listed) \_\_\_\_\_

ADDRESS \_\_\_\_\_

CITY, STATE, ZIP \_\_\_\_\_

EMAIL \_\_\_\_\_ PHONE \_\_\_\_\_

CREDIT CARD # \_\_\_\_\_ EXP. \_\_\_\_\_ SECURITY CODE \_\_\_\_\_

Mail this form with a check to THE FLEA MEMBERS PROGRAM, 41 White Street, New York, NY 10013 or fax this form with your credit card information to (212) 965-1808. Questions or concerns? Call us at 212-226-0051 x102.