



Written By
**Kim
Davies**

Directed By
**Tom
Costello**

Featuring
**The
Bats**

**S
M
O
K
E**

Aug. 22
through
Sept. 28

the
flea



THE FLEA THEATER

JIM SIMPSON ARTISTIC DIRECTOR **CAROL OSTROW** PRODUCING DIRECTOR
PRESENTS THE WORLD PREMIERE OF

SMOKE

WRITTEN BY **KIM DAVIES**

DIRECTED BY **TOM COSTELLO**

ANDREW DIAZ SET DESIGN **DAISY LONG** LIGHTING DESIGN

BETH GOLDENBERG COSTUME DESIGN **LEE KINNEY** SOUND DESIGN

JESSE GEGUZIS FIGHT DIRECTION **BEN ANDERSEN** STAGE MANAGER

STEPHEN SIMALCHIK TECHNICAL DIRECTOR

RON LASKO/SPIN CYCLE PRESS REPRESENTATIVE

CAST

Julie.....**Madeleine Bundy**
John.....**Stephen Stout**

UNDERSTUDIES

John..... **Ivan Dolido**
Julie.....**Adelind Horan**

CREATIVE TEAM

Playwright..... **Kim Davies**
Director **Tom Costello**
Set Designer..... **Andrew Diaz**
Lighting Designer.....**Daisy Long**
Costume Designer **Beth Goldenberg**
Sound Designer **Lee Kinney**
Fight Direction **Jesse Geguzis**
Stage Manager..... **Ben Andersen**

SPECIAL THANKS:

Technical Artistry, ThinkSo, Tribeca Lighting, Souths,
Ben Kamine, Erin Courtney, Mac Wellman, Kristen Corey,
David Haugen

FLEA STAFF

Artistic Director	Jim Simpson
Producing Director	Carol Ostrow
General Manager	Joshua Cohen
Technical Director	Stephen Simalchik
Company Manager	Erin Daley
Marketing Manager	David Sernick
Development Associate	Alvin C. Taylor
Audience Development Associate	Ellen Joffred
Assistant Technical Director	Brandon Stock
Graphic Designer	WIDE
Videographer	Crystal Arnette
Photographer	Hunter Canning
Costume Manager	Josh Boerman
Theater, Technical & Production Consultant	Kyle Chepulis
Accountant	Joel Faden & Company, Inc.
Attorney	Carol M. Kaplan/Mitchell, Silberberg & Knupp LLP
Development Consultant	Rachel Colbert
Press Representative	Ron Lasko/Spin Cycle

CAST

(IN ALPHABETICAL ORDER)

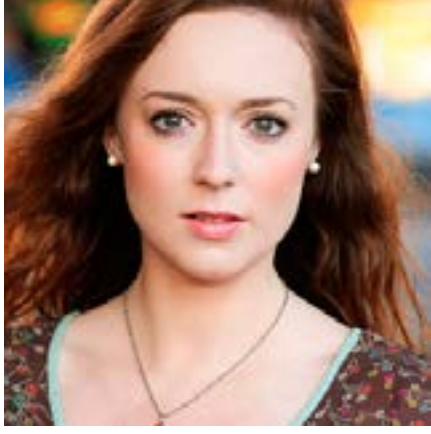


Madeleine Bundy (Julie) has been a member of The Bats for over two years. *The Flea: a cautionary tail* (brandi), *The Shakes: Romeo and Juliet* (Juliet), *#serials@theflea*, *These Seven Sicknesses* (U/S Nurse). Productions written by T. Adamson: *Dead in Brooklyn*, *Math: a tiny play about Heidegger*, *Lamp*, *NotSabbatical*. Other productions: *Trans Siberian Railway* (dir. Alex Keegan), *Snows of Kilimanjaro* (dir. Joel Soren), and *Stranger Things* by Amy Herzog. Madeleine is a voice-over actor as well as a designer. BFA NYU.



Stephen Stout (John) recently appeared as Professor Bhaer in Chiara Atik's *Women* (The PIT, Hollywood Fringe Festival - Best of Fringe). As a member of The Bats, he has appeared as Peter in *The Mysteries*, Foppington in *Restoration Comedy*, Creon in *These Seven Sicknesses* (all dir. Ed Sylvanus Iskandar), Satan in Thomas Bradshaw's *Job, a cautionary tail*, and readings and workshops by Rob Askins, Len Jenkin, Sam Marks, A. Rey Pamatmat, Mac Wellman, Gary Winter and Lauren Yee. He is the co-founder and co-producer of *#serials@theflea*. His recent NYC credits include: *Salamander Leviathan* (Joe's Pub, Ars Nova), *untitled degradation play* (Rising Phoenix Rep), *Clown Bar* (Rising Phoenix Rep, dir. Kip Fagan) and various odds and ends with Ensemble Studio Theatre/Youngblood. Readings/workshops with Exit, Pursued by a Bear, Labyrinth Theater Company, The Lark, New York Theater Workshop, Red Bull Theater, The Roundabout Theater Company and Theatre for a New Audience. Film: *Mystery Team*. BFA NYU.

UNDERSTUDIES



Adelind Horan (Julie) Recent credits include: *The Mysteries* (The Flea), *Unsex Me Here* (Dixon Place), *Equus* (Gallery Players), *Baudelaire in a Box* (Theatre Oobleck), tour of her solo show about mountaintop removal in Appalachia, *Cry of the Mountain* (“Best Documentary Show”

United Solo Festival 2012). Film: *Flytrap*, *The Typo*, *Regarding the Dollhouse*. Webseries: *The Margo and the Universe* and *The Pioneers*. Training: LAMDA, BA: Hampshire College, improv: UCB.

<http://adelind.com>



Ivan Dolido (John) is from Northern California. He attended the Atlantic Acting School. This is his first production at The Flea.

CREATIVE TEAM

Kim Davies (Playwright) is a member of Youngblood and an affiliated artist with New Georges. Short works, including *Untitled Play about Balls*, *Miss Authenticity*, and *The Love of Richard Nixon*, have been produced with the Ensemble Studio Theatre, the Weasel Festival, and the 24 Hour Plays. *St. Baldred’s School for Girls* ran for 4 episodes at #serials@TheFlea. Her plays have received readings and development with the Flea Theater, Partial Comfort Productions, and the Lark, among others. She is a recent graduate of Mac Wellman and Erin Courtney’s MFA in playwriting at Brooklyn College.

Tom Costello (Director) Originally from Ithaca, NY, Tom has been a freelance director in New York since receiving his BFA in Drama from NYU/Tisch. He is a Resident Director at The Flea where he

directed *The Wundelsteipen* (and other difficult roles for young people); twice for #serials@theflea: *Lucifer ex Machina* by Sevan K. Greene and *Undesirables* by Jeff Ronan; twice for The Shakes: *Romeo and Juliet – Act 3* and *The Honest Whore – Act 3*; *The Flying Latke* (co-director, 2011). He is an ensemble member of Pipeline Theatre Company where he has directed *Sleepless City* by Tim Chawaga, *Shakespeare the Dead* by Alex Mills (Dream Up Festival) and *Bubble and Squeak* by Evan Twohy which was a finalist in the 2011 Samuel French Off-Off Broadway Festival. He has also directed Libra Theater Company's *The Thirteenth Commandment* by Joshua H. Cohen and devised two plays for Dramatic Adventure Theatre's ACTION trips to Slovakia and Ecuador. Faculty member at Atlantic Acting School where he has directed numerous productions.

Andrew Diaz (Set Designer) is a set and props designer making prop magic out of his living room in Brooklyn. Recent set designs: *My Daughter Keeps Our Hammer* (The Flea), *An American Family Takes A Lover* (The Cell), *Revenge and Guilt* (After Midnight). Andrew has been a props designer for numerous theater companies, including: New York Theatre Workshop, Carnegie Hall, Classic Stage Company, Primary Stages, The Public, Theater For A New Audience, Cherry Lane Theater, Rattlestick Playwrights Theater, among others. BFA University of Arizona School Of Theater Arts.

www.andrewdiazdesign.squarespace.com

Daisy Long (Lighting Designer) Upcoming: *The Elephant in Every Room I Enter* (LaMama). Recent: *17 Orchard Point*; *I Wanna Destroy You* (The Beckett; Theatre Row); *The Physicists*; *Platonov* (Columbia University); *The Witchelor* (Atlantic Acting School; Ars Nova); *Phaeton*; *The Trojan Women* (NYU); *Redshift* (The Wild Project); *Here Be Sirens* (Dixon Place). Education: Yale University. Many thanks to The Flea and to the *Smoke* team!

Beth Goldenberg (Costume Designer) Design credits include *the little*

match girl passion and *Stabat Mater* (Glimmerglass); *My Daughter Keeps Our Hammer* (The Flea); *We Are Proud to Present A Presentation...* (Fordham); and *Family Play (1979-Present)* and *The Play About My Dad* (CollaborationTown). Assistant design credits include works on Broadway and at Glimmerglass Opera, Opera Theatre of St. Louis, Theatre For A New Audience, The Shakespeare Theatre, and Classic Stage Co. MFA, NYU/Tisch. www.bethgoldenbergl.com

Lee Kinney (Sound Designer) has directed, designed, and composed in New York, Pennsylvania, Ohio, and Canada. He has had the privilege of working with David Cromer, Daniel Fish, and Daniel Kluger, and has directed and assisted at MCC Theater, Rattlestick Theater, The Flea, La MaMa ETC, Stella Adler Studio, and NY Madness. Recent credits: *Cover* (MITF), *Encounters: the la ronde project* (Kid Brooklyn/IRT), *Our Town* (Green-wood Cemetery). MFA: Ohio University (Directing).

Jesse Geguzis (Fight Director) Broadway; *Disgraced*. Off-Broadway; *The Long Shrift*, *To The Bone*, *Basilica*, *The Hilltown Plays* (Obie Award), *Ode to Joy*, (Rattlestick Playwrights Theater), *The Muscles in our Toes* (Labyrinth), *Intimacy* (The New Group), *And I and Silence* (Signature Theatre), *The Patron Saint of Sea Monsters* (Playwrights Horizons), *Small Engine Repair* (MCC Theater), *School for Wives* (Two River Theater), *La Ruta* (The Working Theatre), *Wild* (Sanguine Theatre Company), *The Gin Baby* (Kid Brooklyn/ Mermaid Sand Productions), *La Ronde Project* (Kid Brooklyn). Jesse has most recently been seen performing at The Foundry Theater, The Barrow Group, and Cherry Lane Theater. www.JesseGeguzis.com

Ben Andersen (Stage Manager) is a theatrical stage manager based out of NYC. New York: *Marie Antoinette* (Soho Rep.), *Harbor*, *A Lifetime Burning* (Primary Stages), *Fen*, *The Cripple of Inishman*, *Twelfth Night* (The Julliard School), *A Map to Somewhere Else* (Everyday Inferno).

Regional: New London Barn Playhouse (NH), Berkshire Theatre Festival (MA), Mirror Repertory (VT). B.A. Ithaca College. Thanks to Tom, Kim, Maddy, and Steve. Love to Mom, Dad, David, and Jenny.

THE FLEA STAFF



Jim Simpson (Artistic Director and Founder) Jim was a child actor in his hometown of Honolulu, as a teenager worked with Jerzy Grotowski in Poland, and holds degrees from Boston University School for the Arts and the Yale Drama School. He's worked at many venues in New York City, Nationally and Internationally. Drama Desk cited for Downtown Adventurous Theater, Two-time OBIE-award winner, National Board of Review Excellence in Filmmaking, and cited for artistic leadership in Downtown New York by the Lower Manhattan Cultural Council.



Carol Ostrow (Producing Director) joined Jim Simpson at the helm of The Flea in 2001 and The Guys marked her return to Off-Off-Broadway. She was the OBIE-award winning Producing Director of the Classic Stage Company as well as the founder and original Producing Director of The Powerhouse Theater at Vassar, now in its 28th season. In between, she has been an adjunct professor of theater at Vassar College, Chatham College and McGill University. For The Flea, Carol has produced dozens of world premieres and has been responsible for sound fiscal management of the theater's \$1.3 M budget for thirteen years. She is also overseeing The Flea's capital campaign that will result in a new performing arts center for The Flea to be launched in the fall of 2015. Carol is a graduate of Vassar College and the Yale Drama School. She serves on the President's Advisory Council of Vassar College and the Board of Advisors of the Yale Drama School, and on the Board of Central Synagogue as well as the National Psoriasis Foundation and Lava. She is also a Wall Street Journal Expert, where she writes on small businesses for the paper's online edition. Married and the mother of four incredible and launched young adults, she and her family count Pittsburgh, London, Montreal and now New York City once again as home.

Joshua Cohen (General Manager) previously worked at Roundabout,



holds degrees from Amherst College and NYU/Tisch, and has been a stage manager/lighting designer in downtown modern dance. He is also a writer for the theater, a Jonathan Larson Grant winner whose work includes *The Thirteenth Commandment* (Libra Theater Co., seven NYIT Award nominations, two wins); lyrics, *Keep On Walkin'* (Anna Zornio Children's Theater Playwriting Award); and book/lyrics, *Tamar of the River* (Prospect Theater Co., two Drama Desk nominations; world premiere recording, Yellow Sound Label). He lives in Washington Heights with his wife Anne and daughter Miriam.

Stephen Simalchik (Technical Director) joins the staff as the new



Technical Director. He is a graduate of Williams College with a B.A. in Theatre and has worked Off and Off-off Broadway as a production manager and technical supervisor. Recent projects include Clubbed Thumb's Summerworks festival, Transport Group's successful revival of *I Remember Mama*, the fellowship play, musical and free theatre at the Williamstown Theatre Festival, and sound designs for Omar Sangare's adaptations of *The Crucible* and soon, *Princess Ivana*. He has collaborated with Target Margin, Signature Theatre Company, Berkshire Fringe Festival, I/O New Music Festival, and others. Stephen is also a lifelong musician with a deep affinity for new music, and looks forward to bringing works of theater to fruition with The Flea.

Erin Daley (Company Manager) Prior to The Flea, Erin produced



the Eugene O'Neill festival at Arena Stage and spent three years as a coordinator in Los Angeles working in film and commercials. After cutting her teeth as an independent producer and director, Erin is thrilled to have found a home at The Flea where she can continue to work with exciting and innovative artists. Erin is proud to

have graduated from Skidmore College, Class of 2008.

David Sernick (Marketing Manager) graduated from Indiana University with a BA in Political Science, Theatre & Drama along with a Certificate in Arts Administration. From 2009 – 2012 David was the Marketing Associate at Barrington Stage Company where he cultivated younger audiences with new media strategies thanks to



a Future Audiences Grant from TCG. David founded Black Swan Theatre Project in Grand Rapids, MI and InPulse Productions in Bloomington, IN where he directed, produced and occasionally acted. David currently produces the Darkroom Series with New Light Theater Project.



Ellen Joffred (Audience Development Associate) is thrilled to be joining The Flea! Having worked in locations as disparate as Norristown, PA and Toulouse France, Ellen is now happily rooting herself in NYC. Most recently, she worked for two years in CAA's Theatre Department. Ellen is a member of LMDA, NAMP, TCG and The Plumes. She holds a BA in French and Theatre from Dickinson College, and an MFA in Dramaturgy from Columbia University.



Alvin C. Taylor (Development Associate) comes to The Flea Theater from Carnegie Hall's Weill Music Institute where he served as their first Fellow. He holds a Bachelor of Arts degree in Instrumental Music from Mississippi State University and a Masters of Education in Higher Education Administration from The University of Southern Mississippi. He also serves as Program Assistant for Jazz at Lincoln Center's youth music education program, WeBop. Alvin is excited to call New York City and The Flea home. He currently lives in the Upper West Side with his wife, Annie, a lighting designer and production manager.

WHAT IS THE FLEA?

The Flea is our theater: two unique and intimate performance spaces, located here at 41 White Street in Tribeca. But The Flea is also an award-winning producing organization, founded in 1996, that offers more than 250 cutting-edge theatrical and multi-disciplinary performances each year and gives voice to some of the most exciting and innovative writers of our time.

Founded from the purely artistic impulse to create “joyful hell in a small space,” our body of work has earned us accolades from across the globe including two Obie Awards for Best Production, an Otto for Courageous Political Theater, and a Drama Desk Award Special Award for our commitment to adventurous theater. Our 2001 production of *The Guys*, a raw artistic response to the events of 9/11, became a phenomenon that played to sold-out houses for 13 months and quickly cemented our leadership role in the downtown, Off-Off-Broadway and Lower Manhattan communities.

The Flea is a beacon for adventurous audiences and creative artists of all stripes, from the young striver to the legendary veteran. More than 150,000 people have come to The Flea to witness the rare spark created when artists are given free rein to play, experiment and invent—often in ways that the commercial theater can’t support. And it is that spark that fulfills our mission, pure and simple: to embody the spirit of adventure and excitement that has defined Off-Off-Broadway since its inception.



WHO & WHAT ARE THE BATS?

The Bats is our critically acclaimed resident company, cast anew each year from over 1,000 aspiring young actors. Voted “Best Off-Off-Broadway Company to Act In” by Backstage, being a Bat offers young artists the rare opportunity to break into the field with real life experience, performing in front of an audience on a regular basis and working to support The Flea and its visiting artists. All in one night, a Bat may tear your ticket, pour you a drink and rivet your soul to the stage.



WHAT IS OFF-OFF-BROADWAY?

Dating back almost fifty years, Off-Off-Broadway began informally--an alternative, non-commercial environment where new ideas and projects were born out of energetic and often happenstance encounters. Hundreds of well-known artists credit this adventurous and free-spirited time with their falling in love with theater, and getting good at what they do.

Visit www.theflea.org for information on all things Flea!

Find The Flea Theater on Facebook, Tumblr, Twitter & YouTube

THE BOARD OF DIRECTORS

Chair

Jamie Harris

President

Jim Simpson

Secretary

Douglas Liebhafsky

Treasurer

Emmeline Wexer

Kyle Chepulis

Robert Eimicke

Paul J. Elston

Michael Graff

Wendy Harrison Hashmall

Andrea Miller

Carol Ostrow

David Prittie

Nanahya Santana

Linda Schupack

Jeremy Smith

Joanna Smith

Bernadette Speach

Tony Tramontin

Basil Walter

Sigourney Weaver

Katherine White Weinhoff

Stephen Weinroth

Davis Weinstock

THE FLEA CAMPAIGN

Fifteen years ago The Flea's founders undertook an artistic experiment, renting an old TriBeCa factory in the wilds of Lower Manhattan and opening the doors to the most iconoclastic and talented artists they could find. Since then The Flea has evolved into an award-winning theater known for presenting the very best of Off-Off-Broadway theater, music and dance.

We have also become an emblem for the resilience of Lower Manhattan, drawing more than 150,000 people to the area since the 9/11 attacks. To continue in that leadership role, we recently purchased a site nearby that is soon to become our permanent new home. Our goal is to continue producing our own intimate and exhilarating work while providing stability to dozens of other artists and performance groups. We are grateful to the following for their lead gifts to the project:

VISIONARIES (\$500K+)

Anonymous
 State of New York
 Andrew M. Cuomo, Governor
 George E. Pataki, Governor
 Empire State Development Corporation
 Julie Shimer, Chairman
 City of New York
 Michael R. Bloomberg, Mayor
 New York City Council
 Christine C. Quinn, Speaker
 Margaret Chin, Council Member
 James Van Bramer, Council Member
 Borough of Manhattan New York
 Scott M. Stringer, President
 The Lower Manhattan
 Development Corporation
 Carol Ostrow & Michael Graff
 Paul Elston & Frances Beinecke
 Howard Gilman Foundation
 A.R. & Molly Gurney
 The September 11th Fund

ANGELS (\$250K+)

Anonymous
 Douglas Liebhafsky & Wendy Gimbel
 Sigourney Weaver & Jim Simpson

PRODUCERS (\$50K+)

The Irene Diamond Fund
 Dormitory Authority
 of the State of New York
 Paul T. Williams, Jr., President
 Walter Nick Howley
 Lower Manhattan Cultural Council
 Dennis Mehiel
 All The Way Foundation
 Liam Neeson
 In Memory of Natasha Richardson
 Omnicom
 David Richenthal

Kenes Rakishev &
 Aselle Tasmagambetova
 United Talent Agency
 Stephen & Cathy Weinroth
 Davis & Betsy Weinstock

DIRECTORS (\$25K+)

New York State Council on the Arts
 Aby Rosen, Chair
 Lisa Robb, Executive Director
 Jim & Suzy Cameron
 Kyle Chepulis
 Susan Cooper Cronyn
 Linda Schupack & David Good
 Wendy & David Hashmall
 International Creative
 Management, Inc.
 Marilyn & Jeffrey Katzenberg
 Kathleen Kennedy & Frank Marshall
 Massey Knakal Real Estate
 Ed & Patricia Matthews
 Gould Family Foundation
 David Prittie
 Daryl Roth & Jordan Roth
 Dan & Sue Rothenberg
 Ted Snowdon
 The Fran & Ray Stark Foundation
 Edward Trach
 Basil Walter

ARTISTS (\$10K+)

Roger Berlind
 André Bishop &
 the Lecomte du Noüy Foundation
 Ellen McCourt
 Andrea & George Miller
 Newman's Own Foundation
 Emma Sheaffer Charitable Trust
 Kent Lawson & Carol Tambor
 Celeste & Tony Tramontin
 Katherine & Samuel Weinhoff

PATRONS (\$5K+)

Anonymous
 Robert Eimicke & Roslyn Black
 Lawrence Shainberg & Vivian Bower
 Marshall & Nina Brickman
 E.L. & Helen Doctorow
 William H. Draper III &
 Phyllis C. Draper
 Kristin & Gary Friedman
 Jane Gelfman
 Edwin & Lorna Goodman
 The Anrol Foundation
 Mary G. Gurney
 Sylvia G. & Benjamin F. Johnson and
 Sarah East Johnson
 Lise Jeantet
 in honor of Francois Truffaut
 Mark Kaplan
 Edward McKinley
 Cassie Murray and
 William Plapinger
 Nanahya Santana & Hume Steyer
 Susan Sarandon
 Mike Nichols & Diane Sawyer
 George Sheanshang
 Jeanne S. & Herbert J. Siegel
 The Dorothy Strelsin Foundation
 Becky Tesich
 Emily & Lily Wiest
 William Morris Endeavor Entertainment

FRIENDS (\$1K+)

Marla Mayer & Chris Ahearn
 Robert & Betsy Barbanell
 Agnes Martin Barley
 Tom & Meredith Brokaw
 Arthur H. Brooks
 David C. Bryan
 Beth Burnam
 Arthur & Linda Carter
 Michael J. Chepiga &
 Pamela Rogers Chepiga
 in honor of Kathy White
 Marya Cohn
 Al & Roma Connable
 Blythe Danner
 Robert L. Denton
 Arlene Donovan
 John & Karen Erickson
 Mr. & Mrs. John Galen
 Joseph F. Godfrey & Keith Halstead
 James & Toni Goodale

Sarah C. Goodyear
 Jane Whitney Gruson
 Christopher Bumcrot & Evelyn R. Gurney
 Lynne Halliday & B.H. Barry
 Robert & Marilyn Harbage
 Patrick Herold
 Fenita Bilgoraj Heyman
 Cindy & Alan Horn
 Emily F. Johnson
 Marsha Berkowitz & Wayne Kabak
 Marianne & David Kaplan
 Jerome B. Kauff
 Stephen & Marina P. Kaufman
 Louise Lamphere
 in honor of Basil Walter
 Claire & David Lane
 Harry Moses & Randy Lehrer
 Jerry Levine & Nina Tassler
 Paige & Nicky L'Hommedieu
 Kate H. Marber
 Israela Margalit
 Julian Mazor
 Michael Miller
 Robert & Evelyn Miller
 Juliet and Michael Patsalos-Fox
 Susan Monserud & Ric Sonder
 Bernard W. Nussbaum
 Pakula Productions, Inc.
 Gilbert Parker
 David B. Pearce, M.D.
 Mary Ann & Bruno A. Quinson
 Holland Taylor
 Deborah Schneider & Jim Tilley
 The Shana Alexander
 Charitable Foundation
 Jonathan Sheffer
 Barry Skovgaard & Marc Wolinsky
 Bernadette Speech &
 Jeffrey Schanzer
 Scott & Dhuane Stephens
 Michael & Marjorie Stern
 Bruce Sunstein
 David & Deborah Trainer
 Victoria G. Traube
 Ginny & Bob Walther
 Emmeline Wexer
 Marguerite C. Whitney
 Rachael Worby
 F.A. Zunino

List as of 8/14/14

We apologize if you have been left off this list.

Please contact Alvin C. Taylor at alvint@theflea.org for any corrections.

For more information on our Capital Project, please contact Carol Ostrow, (212) 226-0051 x104



THE FLEA I.P.'S

In June of 2009 The Flea launched a unique patron program called The Flea IPs - an elite and dedicated group that helps to make the dreams of The Flea a reality. Flea IPs gain insider access through exclusive events including private talk-backs, intimate artist dinners, master classes and first-look readings. Flea IPs commit their support by generously pledging \$5,000 each year.



Interested? We'd love to make you a Flea IP too!

Please contact Carol Ostrow at 212.226.0051 x104 or carolo@theflea.org for more information.

The Flea proudly salutes our Flea I.P. members and thanks them for their unwavering support:

John & Gaily Beinecke
Roger Berlind
Lois Chiles
Larry Condon
Jonathan Reynolds & Heidi Ettinger
Carol Ostrow & Michael Graff
A.R. & Molly Gurney
Celeste Guth
Lorie & Nick Howley
Eleanora & Michael Kennedy
Elizabeth Olofson & Daniel Kurtz
Tina & Stephen Lang
Wendy Gimbel & Douglas Liebafsky
Gregory Long
Andrea & George Miller
Elizabeth Olofson
Marcie & Robert Orley
Fred Poses
Sue Rothenberg
Stephen & Livia Russell
David Good & Linda Schupack
Lisa & Michael Senter
Jeremy Smith
Nanahya C. Santana & Hume Steyer
Tony & Celeste Tramontin
Jim Simpson & Sigourney Weaver
Katherine & Sam Weinhoff
Stephen & Cathy Weinroth
Davis & Betsy Weinstock
Nina Winthrop

FOUNDATIONS, CORPORATIONS, GOVERNMENT & INDIVIDUAL SUPPORT

\$50,000+

The Poses Family Foundation

\$25,000 - \$49,999

Catherine & Frederick Adler

Bloomberg Philanthropies

New York City Department of
Cultural Affairs

Doris Duke Charitable Foundation

Shubert Foundation

Carol Ostrow & Michael Graff

Warburg Pincus

\$10,000 - \$24,999

Anonymous

Roger Berlind

JPMorgan Chase Foundation

Lois Chiles

Elizabeth Olofson & Daniel Kurtz

Wendy Gimbel & Douglas Liebhafsky

National Endowment for the Arts

The New York State Council on the Arts

The Prospect Hill Foundation

Sue Rothenberg

Livia & Stephen Russell

The Fan Fox &

Leslie R. Samuels Foundation

The Shubert Foundation

Sigourney Weaver & Jim Simpson

Jeremy Smith

Nanahya C. Santana & Hume Steyer

The Dorothy Strelsin Foundation

The Harold & Mimi Steinberg Charitable Trust

Katherine & Samuel Weinhoff

Cathy & Stephen Weinroth

Robert Wilson

The Edward & Sally Van Lier Fund

of the New York Community Trust

\$5,000 - \$9,999

Trey Beck

Stephanie Stiefel & Robert Cohen

Larry Condon

Donna & Steven Gartner

Linda Schupack & David Good

Edwin & Lorna Goodman

A.R. & Molly Gurney

Celeste Guth

Wendy & David Hashmall

Lauralee & Walter N. Howley

Eleanora & Michael Kennedy

Kristina & Stephen Lang

Sahra Lese

The Leon Levy Foundation

The Lucille Lortel Foundation

Andrea & George Miller

NYS Council on the Arts

Marcie & Robert Orley

Cassie Murray & William Plapinger

Heidi Ettinger & Jonathan Reynolds

Lisa & Michael Senter

Celeste & Tony Tramontin

Betsy & Davis Weinstock

Cornelia Winthrop

\$2,500 - \$4,999

The Axe-Houghton Foundation

The Barbara Bell Cumming Foundation

Jim and Suzy Cameron

Jennie & Richard DeScherer

Roslyn Black & Robert Eimicke

Mertz Gilmore Foundation
 The John Golden Fund
 The Walter & Elise Haas Fund
 The Frederick Loewe Foundation
 Alice & Benjamin Reiter
 Joanna Smith

\$1,000 - \$2,499

Anonymous (5)
 Harry & Gay Abrams / Abrams Artists Agency
 Gaily & John Beinecke
 The Mary Duke Biddle Foundation
 Mr. Vernon Block & Mrs. Deborah McGraw-Block
 Tom & Michelle Bradley
 Beth Burnam
 Larry Condon

Daniel Davis
 Ellen Davis
 Margot & Jonathan Davis
 Dramatists Guild Fund
 Christopher Durang
 Vicki & Bobby Freeman
 The Friars Foundation
 Thomas & Darlene Fridstein
 Barbara & Mark Gerson
 Mr. & Mrs. Bernard Kamine
 John Kilgore
 Jane Willkomm & Marc Lesnick
 Gregory Long
 Dorothy Loudon Foundation
 Israela Margalit
 Debbie McGraw
 Shelly & Neil Mitchell



We apologize if you have been left off this list.

Please contact Alvin C. Taylor at alvint@theflea.org for any corrections.

FLEA MEMBERS

\$250 Donor

Anonymous
 Amy & Howard Seife
 Barbara Pook
 Bart Friedman & Wendy A. Stein
 Bernadette Speach & Jeffrey Schanzer
 Bonnie Graff
 Bruce Goodrich
 Byron & Anita Wien
 Carol M. Kaplan
 Catherine Cahill & William Bernhard
 Chase Brock
 Cherrie Nanninga & Reno Cappello
 Clay Baenziger
 Cyndy Dietel Krieger
 David & Sheila Manischewitz
 Diane Compagno Miller
 Ellen & Norman Roth
 George & Jane Bunn
 Gina Gibney
 Gornisht-Hefen Fund
 Harris & Randee Horowitz
 Henry Finder, Kwame Anthony Appiah
 Ida & Bob Kowit
 Increase Mather
 Jan Guifarro
 Janet & George Felleman
 Jeff Zimmerman & Sharon Weinberg
 Joanna & Tony Dean
 Joe Godfrey & Keith Halstead
 Jonathan Weiner
 Judith Krupp
 Kate Marber & Robert Norman
 Kathleen E. Shannon
 Laurie & Arthur Sackler
 Laurie Cohen

Linda Blacken
 Lisa Roumell & Mark Rosenthal
 Marilyn Armel
 Melissa Wohlgemuth
 Missie Rennie
 Mr. Douglas H. Ostrow
 Peg McGetrick
 Peter W. Stamos, Jerome Florists Inc.
 Robert & Betsy Barbanell
 Seth Meyer & Nathaniel Speer
 Seth Moskowitz
 Stacey Morse
 Stefanie Takacs & Howard Zeiderman
 Thomas Cauchois
 Willy Holtzman

\$100 Contributor

Anonymous (8)
 Abigail Winship
 Aliza & Maury Wind
 Alan Wertheimer
 Andrea Darriau
 Ann & Richard Beatty
 Arline E. Vogel & Harry S. Precourt
 Ashley Jacobson
 Barbara & Gary Bloom
 Barbara Faith Alperin
 Ben F. & Sylvia G. Johnson
 Benjamin Seiler
 Betty & Joshua Goldberg
 Billy Lazarus
 Bruce Fagin
 Carole Pesner
 Caroline & Kevin Smith
 Charles Forma
 Christopher Cayaba

Claire Werner
 Clarice Feinman
 Cynthia Harris
 Daniel & Louise O'Connell
 Daria & David Moore
 David & Lucy Carson
 David & Siobhan Olson
 David Budinger
 David Parshall
 David S. & Hellen Hirsch
 Debra Kozee C & S International Insurance
 Brokers
 Dhuane Stephens
 Douglas Balder
 Dr. Benjamin Natelson & Dr. Gudrun Lange
 E. Kilik
 Ed & Carla Slomin
 Edward Albee
 Edward Whitney
 Elaine Montgomery
 Eleanor Shakin
 Elizabeth Propp
 Elizanbeth Stanton
 Ennius E. Bergsma & Judy A. Bergsma
 Fran & Jim Dowling
 Fran Smyth
 Frances Beatty Adler
 Frances Pandolfi
 Frank & Patricia Lenti
 Gail Gordon
 Gale & Jim Jacobsohn
 Gary & Kathryn Purwin
 Gary Tucker
 Gerald Bamman & Cecil MacKinnon
 Grey & Michael Hirschfeld
 Gwynne Stoddart
 Harriet & Gregg Orley
 Harry & Eugenie Havemeyer
 Heather Sandifer
 Helga & Frank Doyle
 Howard Kaminsky
 Ida Cole
 Isaac Kruger & family
 Jack Gangi
 James Jackson
 Jane G. Stevens
 Jane Weiss & Barry Hoffman
 Jeremy Zimmer
 Jason Goldstein
 Joana Vicente & Jason Kliot
 Joanne Jacobson
 Jodi & Robert Harrison
 Joelle Noulin merit
 John & Diane Haney
 Jonthan Brady
 Jorge Cao & Don Thomas
 Joseph Allen
 Joseph Sadove & Jenny Genin
 Judith & DeWitt Baker

Judith & Gary Pasquinelli
 Judith & Richard Merbaum
 Judith Wink & Michael Zumoff
 Judy & Ira Dembrow
 Karen & Andy Rhodes
 Katherine Hanson & James Fraser
 Katherine Janca
 Kathleen Halvey
 Kendra Decious
 Laurie Meckler, MD
 Linda Rousseau
 Lisa Milligan & Don Marcus
 Lisa Van Curen
 Marcia L Smith
 Maria & Richard Thulin
 Marjorie Ellenbogan
 Marjorie P. Rosenthal
 Mark Rossier
 Marlene Marko
 Martha J. Fleischman
 Mary Ann Doyle
 Mary R. Hardin
 Matt Pagel & Corey Revilla
 Meaghan Gragg
 Meryl & Robert Meltzer
 Michael S. Luongo & Stephen Foreman
 Mickey Diener & Lisa Bennett
 Misty Anderson
 Mr. & Mrs. Dan Sernick
 Murray Luftglass
 Naomi Azulay
 Paul Cushman
 Peter & Helena
 Preston Stahly
 R. Clay Ballard
 Rabbi Peter & Kerry Rubinstein
 Richard & Claudia Alcorn
 Richard & Sue Baldwin
 Richard H.M. & Gail Lowe Maidman
 Richard Lehman & Kathleen Feely
 Rita Iskandar De Braux
 Rob Stuart
 Robert D. Sholiton
 Roberta Lee Scott
 Roger W. Oliver
 Ronald S. Covar
 Ronni Casty
 Ryan Hart
 Sara & Fred Epstein
 Sarah Bond
 Sarah Reines & Rich Bornstein
 Seth D. Shulman
 Stephen & Anita Theoharis
 Stephen Friedman
 Steven Banks
 Steven Ingerman
 Sue B. Dorn
 Susan & Jeffrey Chase
 Susan & Arthur Fleischer Jr.

Susan & Paul Buck
 Susan Klock
 Suzanne Westfall
 The DRAMA BOOK SHOP
 The Ramsey Family
 Tony Markward & Kim Ng
 Vincent Abrahams
 Walter Foery & Ransom Wilson
 Walter Gilbert
 Wayne M. Winnick
 Wayne Ransier & Sharon Tomaselli
 William Pike

\$50 Supporters

Anonymous (5)
 A Luminous Mind Productions
 Alice Ericsson
 Anjeli Chapman
 Ann & John Costello
 Anna Bogyay
 Arlette Baker
 Arlo Blocher
 Art Carey
 Barbara & Alex Waugh
 Barbara P. Mossman & Sheldon Fried
 Benjamin H. Kamine
 Betty & Jay Poppo
 Bill Gill
 Brigitte Reiss-Andersen
 Burton Zwick
 Carla Lord
 Carol & Allan Carlton
 Carol DeBear
 Carol W. Kelley
 Carolyn Benbow
 Carolyn Bross
 Carrie Sackett
 Christine Boeke
 Christopher Vega
 Coleman & Kim Conkling
 Dayna Lucas
 Diana Prechter
 Diane & Barry Eisenstat
 Dominic & Maren Spillane
 Douglas Kreitzberg
 Elizabeth A. Dooley
 Elizabeth Gasior
 Ellen Joffred
 Ellie & Bob Berlin
 Emily Graff
 Evelyn Chen & Johnson Tang
 Gail Berry
 Gail Griswold
 Helene Foley
 J. Marvin Watts
 Jack Hoey
 Jane & Greg Smith
 Jane Gilbert

Jann Leeming
 Jennifer Cecere
 Jim Hoffman
 Jo Walker
 Joan Budish
 Jody Peterson
 John Wiecks
 Joseph Ackerson
 Joseph Meyers
 Josephine A Pulito-Spencer
 Joy Blouin
 Judith & Alexander Blanton
 Julie Brown
 Julie L. Mellby
 Kako Hatakeyama
 Kaori Kitao
 Kelly Wines & Scott Freishtat
 Ken Byrne
 Linda Kahn
 Liz Horwitz
 Marjorie Pollack
 Martin Domb
 Mary K Fischer
 Mary Voce
 MaryAnn & Jack Routledge
 Melanie Matthews
 Melany Gray
 Miles Jacoby
 Milton B. Rubin
 Miriam Charney & Roger Maltby
 Mr. & Mrs. Richard T. Bialek
 Nicole Kovacs
 Paul & Joanne Howard
 Paul Cunningham
 Paul Liebowitz
 Paul Michael Fontana
 Phyllis Goldberg
 Roberto F. Ortiz
 Roger Schmid
 Rosanne Kumins
 Rose Bonczek
 Rosemarie Conforte & William Seizer
 Ruth Zachary
 Samantha Kaplan
 Sarah Graff & Adam Snetman
 Shirley A. Wright
 Stephen Charen
 Stuart N. Hutchison III
 Susan & Stephen Schneider
 Susan Bernfield
 Susan Brittingham
 Todd & Lori Rosen
 Toshi Abe & Nancy E. Hall
 Vincent Bivona
 Walter Gilbert
 Walter Kass
 Wilma & Bernard Maskit
 Zachary Snow

FLEA REWARDS

Use your Flea Member Card or ticket stub to take advantage of these special offers from our downtown partners.

Petrarca (34 White St.)

212-625-2800 / petrarcatribeca.com

Italian Restaurant & Wine Bar

Receive a 10% discount on your bill

Da Mikele (275 Church St.)

212-925-8800 / damikele.com

Neapolitan-Inspired Italian Restaurant

Receive a 10% discount on the bill

Souths (273 Church St.)

212-219-0640 / southsnyc.com

Neighborhood Bar and Restaurant

A complimentary glass of wine with the order of an entrée

Billy's Bakery (75 Franklin St.)

212-647-9958 / billysbakerynyc.com

Deserts and Other Baked Goodies

Buy one cupcake & get the second 1/2 off

Maslow 6 Wine Shop (211 West Bway)

212-226-3127 / www.maslow6.com

Wine Shop

Receive 10% off the price of wine

Cercle Rouge (241 West Bway)

212-226-6252 / cerclerougeresto.com

French Bistro

Recieve 10% off bill on a pre-show dinner before 7pm

TriBeCa Grill (375 Greenwich St.)

212-941-3900/myriadrestaurantgroup.com

American Grill

Enjoy a complimentary sommelier's choice glass of wine with dinner.

Nish Nush

(88 Reade Street, corner of Church)

212-964-1318/www.nishnushnyc.com

Fresh, gourmet hummus, falafel, baklava and more – 10% off with your membership card!

Sun In Bloom (165 Church St.)

212-791-6700/suninbloom.wordpress.com

Gluten-Free, Vegan & Raw Food Kitchen in Tribeca & Brooklyn- 10% off with your membership card!

**CHECK THEFLEA.ORG OR CALL
212-226-0051 x101 FOR
THE LATEST UPDATES & DEALS.**

THE FLEA THEATER MEMBERS PROGRAM

Get Special Attention. Support The Flea. Be a Member.

Our theater is tiny and we sell out...fast. Members get guaranteed seats plus exclusive discounts, invites, drinks & inside info! All levels of membership are 100% tax-deductible.

Become a Member

\$25 Member

No booking or convenience fees
VIP ticket processing

\$50+ Supporter

All of the above, plus:
Exclusive discounts & deals to partner businesses
First to know of exciting post or pre-show Flea events
Special thanks in Flea programs

\$100+ Contributor

All of the above, plus:
Reserved seating for you and your guests
Exchange tickets up to 24 hours in advance
One complimentary drink at our bar before every show
Reservations to #serials@theflea any night of performance

\$250+ Donor

All of the above, plus:
Invitations to readings and special Flea events
One complimentary drink at our bar for your entire party

\$500+ Partner

All of the above, plus:
Access to Broadway house seats (purchase necessary)
Dinner reservations at select Flea Partner restaurants
Unlimited complimentary drinks

\$1,000+ Patron

All of the above plus:
Invitation to select Opening Night performances and cast parties

Flea I.P's

Interested? Email carolo@theflea.org for more information!

CALL 212.226.0051 x101, or MAIL/FAX the form below to join!

I WANT TO JOIN THE FLEA! (Please check membership level below)

_____ \$25 Member

_____ \$50 Supporter

_____ \$100 Contributor

_____ \$250 Donor

_____ \$500 Partner

_____ \$1,000 Patron

NAME (as should be listed) _____

ADDRESS _____

CITY, STATE, ZIP _____

EMAIL _____ PHONE _____

CREDIT CARD # _____ EXP. _____ SECURITY CODE _____

Mail this form with a check to THE FLEA MEMBERS PROGRAM, 41 White Street, New York, NY 10013 or fax this form with your credit card information to (212) 965-1808. Questions or concerns? Call us at 212-226-0051 x107.