

SHE KILLS MONSTERS



the
flea

a new play by
Qui Nguyen
directed by
Robert Ross Parker
featuring
The Bats



THE FLEA THEATER

JIM SIMPSON ARTISTIC DIRECTOR **CAROL OSTROW** PRODUCING DIRECTOR

BETH DEMBROW MANAGING DIRECTOR

PRESENTS THE WORLD PREMIERE OF

SHE KILLS MONSTERS

WRITTEN BY **QUI NGUYEN**

DIRECTED BY **ROBERT ROSS PARKER**

FEATURING **THE BATS**

NICK FRANCONI SET & LIGHTING DESIGN **JESSICA PABST** COSTUME DESIGN

SHANE RETTIG SOUND DESIGN **DAVID VALENTINE** PUPPET DESIGN

EMILY EDWARDS CHOREOGRAPHY **MIKE CHIN** FIGHT DIRECTION

KATE SINCLAIR FOSTER PROP & ASST. SET DESIGN

MICHELLE KELLEHER STAGE MANAGEMENT

SHE KILLS MONSTERS

CAST

(IN ALPHABETICAL ORDER)

Agnes.....	Satomi Blair
Tilly.....	Allison Buck
Chuck.....	Jack Corcoran
Steve.....	Edgar Eguia
Orcus.....	Raúl Sigmund Julia
Miles.....	Bruce A. Lemon
Kalliope.....	Megha Nabe
Lillith.....	Margaret Odette
Vera/Succubus.....	Brett Ashley Robinson
Farrah/Narrator/Succubus.....	Nicky Schmidlein

Understudies

Ugo Chukwu (*Orcus, Steve*), Cleo Gray (*Kalliope, Lillith*), Annabel Lalonde (*Vera, Farrah*)
Sean McIntyre (*Miles, Chuck*), Tedra Millan (*Tilly*), Margaret Odette (*Agnes*)

CREATIVE TEAM

Playwright.....	Qui Nguyen
Director.....	Robert Ross Parker
Set & Lighting Design.....	Nick Francone
Sound Design.....	Shane Rettig
Costume Design.....	Jessica Pabst
Puppet Design.....	David Valentine
Prop & Asst. Set Design.....	Kate Sinclair Foster
Fight Director.....	Mike Chin
Asst. Fight Director.....	Jim Ludlum
Asst. Sound Design.....	Patrick Metzger
Asst. Lighting Design.....	Daniel Winters
Graphic Design.....	Jaime Vallés
Photography.....	Joan Marcus
Choreography.....	Emily Edwards
Stage Manager.....	Michelle Kelleher
Asst. Stage Manager.....	Kristan Seemel
Asst. Stage Manager.....	Brandon Stock
Asst. Stage Manager.....	Danya Taymor

FLEA STAFF

Artistic Director.....	Jim Simpson
Producing Director.....	Carol Ostrow
Managing Director.....	Beth Dembrow
Technical Director.....	Liz Blessing
Development Manager.....	Penn Genthner
Marketing & Membership Manager.....	Dane Joseph
Company Manager.....	Sarah Wansley
Assistant Technical Director.....	Kyle Crose
Graphic Designer.....	David Prittie
Costume Manager.....	Holly Chou
Theater, Technical & Production Consultant.....	Kyle Chepulis
Accountant.....	Joel Faden & Company, Inc.
Attorney.....	Paul, Weiss, Rifkind, Wharton & Garrison LP/Carol Kaplan
Development Consultant.....	Rachel Colbert
Press Representative.....	Ron Lasko/Spin Cycle

Special Thanks **Office Max, Technical Artistry, ThinkSo, Tribeca Lighting, Sallugi's, Da Mikele, Souths**
Allegra LaViola Gallery

THE CAST



Satomi Blair (Agnes) has appeared at The Flea in *American Sexy* (world premiere) and *#serials@theflea*, and will play “Jocasta” in the upcoming *These Seven Sicknesses*. Founder of 4Hawk Productions, which is currently producing the documentary film *The Austin Pendleton Project: Where The Work Is*. Satomi is a member of Leviathan Lab, a graduate of Fordham University at Lincoln Center, and a Netflix subscriber. For additional acting and producing credits, visit satomiblair.com



Allison Buck (Tilly) Other shows at The Flea include *Looking at Christmas* (Charmian), *Future Anxiety* (Shelby), and *Just Cause* (Coco). She is slated to perform in The Flea’s next show, *These Seven Sicknesses* as Tekmessa. She received a BA in Theater Arts from Cornell University.



Ugo Chukwu (u/s Orcus, Steve) was last seen in the world premiere of *Future Anxiety* at The Flea. Other credits include *Why Pluto is a Planet* (Samuel French Off-Off Bway Festival), *King Lear* (Teatro LaTea), *Take Me Out* (Heights Players), and the late night hit *#serials@theflea* (The Flea), in which he’s had the pleasure of playing Queen Elizabeth and various sea creatures. BFA: Brooklynn College.



Jack Corcoran (Chuck) is a recent graduate of the Boston University School of Theatre. He also received training at the London Academy of Music and Dramatic Arts. Jack has appeared at The Flea in *Looking at Christmas*. Other credits include *Hound*, *Waiting for Godot*, *Arcadia*, *Antony and Cleopatra*, *A Man of No Importance*, *The Provok’d Wife*, and *The Weavers*.



Edgar Eguia (Steve) International Tour: *Yo Gabba Gabba Live!* NYC: *The Third Pulpit* (Strawberry One Act Festival); *The Passion Play* (Park Performing Arts Center); *Something Wicked* (Richmond Shepard Theatre); *Goliath* (Planet Connections Theatre Festivity) and *The Taming of the Shrew* (DMTheatrics). Tours: The National Theatre for Children & George Street Playhouse. Training: Stella Adler Studio of Acting.

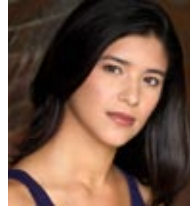


Cleo Gray (u/s Kalliope, Lillith) joined the Bats in June 2011 and has recently appeared in *#serials@theflea*. Cleo received her BFA in Acting from Montclair State University and has studied at Shanghai Theater Academy.

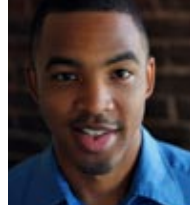


Raúl Sigmund Julia (Orcus) Previous productions at The Flea: *The Great Recession*, *Girls In Trouble* (u/s), *Office Hours*, *Looking At Christmas*, *Future Anxiety*, and *Just Cause*.

Annabel Lalonde (u/s Vera, Farrah) is making her debut at The Flea. She has also been seen in *Notice Me* by Blair Singer (The Wild Project), *The Dispute* (NAATCO), and *The Subway Plays* (HB Playwrights), among others. In her free time, she enjoys writing children's books and mulling cider.



Bruce A. Lemon (Miles) was most recently seen on tour in *Sunjata Kamaleyna* with the McCarter Theatre and *#serials@theflea*. New York: *Big Tex*, *Orestes 2.0*, *The Blacks* (dir. Hope Clarke), *Richard III*, *Hecuba*. Film: *Gang Tapes* (Lions Gate Films), *Killing The Dog* (Six Part Productions), *The Prospect Heights Affair* (Sepia Studios). M.F.A. in Acting, The New School for Drama 2010. Born and raised in Watts, Los Angeles, CA.



Sean McIntyre (u/s Miles, Chuck) Former Flea credits include *Just Cause* (Officer) and *#serials@theflea*. Other NYC credits include *Raw Love* (Theater for the New City), *Foreplays* (FullStop Collective), and *A Midsummer Night's Dream* (Pulse Ensemble). He holds a BA in Theatre from James Madison University.



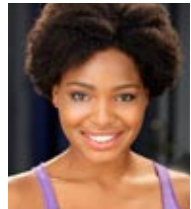
Tedra Millan (u/s Tilly) While earning her BFA in Acting from the University of Michigan, Tedra studied with SAFD Fight Master Erik Fredricksen, and is eager to use her certified stage combat skills in *SKM*. After graduating, Tedra worked as Miley Cyrus' stand in for Lisa Azuelos' American remake of *LOL* and was offered a part, granting her SAG eligibility. Since moving to NYC, Tedra has performed in Rising Sun Performance Company's *Cravings* and their 10th Anniversary *Mash-up*.



Megha Nabe (Kalliope) moved to NYC after completing her MFA in Theater from the University of Iowa. She has been a resident actor with The Bats since early 2011, and has been a performer in The Flea's late night episodic show, the *#serials@theflea*, since March.



Margaret Odette (Lillith, u/s Agnes) A native NYer. Credits: *Bright Lights*, *Tent City* (New Perspectives); *Sign Me* (Looking Glass NY); *A Midsummer Night's Dream* (Columbia); *Butterfly, Butterfly, Kill Kill Kill!* (NY Fringe); *CoMotion* (Blessed Unrest); *Hair* (Brown); *Game of Luv and Chance* (Ruffled Feathers); and *The Bluest Eye* (Providence Black Rep; Motif Award recipient). Margaret has performed as a backup dancer for recording artist M.I.A. & studied with William Esper & Roz Coleman in NYC. She is a Weston Award recipient.



Brett Ashley Robinson (Vera/Succubus) Recent credits: *Fornicated by The Beatles* (ART emerging artist festival), *Heist!*, *Post Wave Spectacular* (Humana Festival, Actors Theatre of Louisville), *A Midsummer Nights Dream*, *A Christmas Story*, *A Christmas Carol* (Actors Theatre of Louisville).



THE CAST



Nicky Schmidlein (Farrah, Narrator, Succubus) This is Nicky's third production at the Flea Theater. She grew up in Annapolis, Maryland and studied drama at NYU's Stella Adler Studio and Stonestreet Studio. She is very excited to be working with such talent and vision at The Flea, and she hopes to continue working with people who are so determined to create.

THE CREATIVE TEAM

Qui Nguyen (Playwright) is a playwright, screenwriter, and Co-Artistic Director of the OBIE Award-winning geek theatre company, Vampire Cowboys. Recent scripts include the hip-hop musical *Krunk Fu Battle Battle* (East West Players), *Soul Samurai* (Ma-Yi Theater & Vampire Cowboys), *Bike Wreck* (Ensemble Studio Theater), *Aliens versus Cheerleaders* (Keen Teens), and the critically acclaimed Vampire Cowboys productions of *Fight Girl Battle World* and *Alice In Slasherland*. *Time Out New York* cited Qui as one of ten downtown "Playwrights to Watch" and *The NY Times* has praised Qui's writing as "culturally savvy comedy" and "ambitious entertainment." Qui is a proud member of New Dramatists, the Ma-Yi Writers Lab, Ensemble Studio Theatre, and The Playwrights Center. Recently, his writing was in HERE's production of *Lush Valley*, and coming this February 2012 will be the Off-Broadway run of *The Inexplicable Redemption of Agent G* at Theater Row being produced by Ma-Yi Theater and Vampire Cowboys.

Robert Ross Parker (Director) is the co-artistic director of the Obie winning Vampire Cowboys with Qui Nguyen. For Vampire Cowboys, he has directed *Vampire Cowboy Trilogy*, *A Beginner's Guide to Deicide*, *Living Dead in Denmark*, *Men of Steel*, *Fight Girl Battle World*, *Soul Samurai*, *Alice in Slasherland*, and *The Inexplicable Redemption of Agent G*. For the VC Saturday Night Saloon series, he wrote *Jimmy Starshooter Must Get Laid*, and *Radio Monster Theatre: The Further Adventures of Henry and Victor*. Other recent directing credits include *Goodbye Cruel World* (also adapter, Roundtable Ensemble) *Hamlet{solo}* (Edinburgh Fringe and Solo Nova at PS 122), and numerous projects for Ensemble Studio Theatre, where he was a young director in residence. As an actor, Robert played the title role in The Flying Machine's *Frankenstein* at Soho Rep, and on tour, and played the March Hare in their production of *Alice in Wonderland*. He was the editor of *The Dramatist*, the Journal of the Dramatists Guild of America. MFA Ohio University.

Nick Francone (Set & Lighting Design) NY & regional design credits include work with the Obie Award winning Vampire Cowboys (resident scenic & lighting designer), The Public Theater, Ensemble Studio Theater, New Georges, Second Generation, Roundtable Ensemble, Opera Slavica, Prospect Theater Company, White Bird Productions, the Summer Play Festival, Theater Squared, Cincinnati Playhouse in the Park, Alter Ego, Six Figures, Ballet Hispanico, Stoneham Theatre, Dorset Summer Theater, ReVision Theater, Princeton University and many more. Associate Design Credits include the Tony Award winning set for *Wicked* (and all adaptations around the world), *The Pirate Queen*, *You're Welcome America*, *The Homecoming*, *Drunk Enough to Say I Love You*, *A Number*, and *Imagine This* with Eugene Lee, Scenic Coordination for Pope Benedict's visit (Yankee Stadium and St. Joseph's Seminary), and worldwide productions of *Billy Elliot* with Ian MacNeil.

Kate Sinclair Foster (Props & Asst. Set Design) is thrilled to be joining The Flea as the Resident Set Designer a second season. Favorite past projects include *Office Hours*, *American Sexy*, & *Just Cause* at The Flea (Set Design), pieces in Target Margin's Theater of Tomorrow and *Unknown Williams Lab* (Directing/Production Design), *Strike Anywhere* & *ANITYA's Macbeth Variations II* (Set Design), MCC Theatre Youth Company's Freshplay Festival (Set and Costume Design), Clubbed Thumb's Summerworks Festival (Lobby Design), *Lear* & *The Shipment* (Young Jean Lee's Theatre Company, Assistant Set Design) & Williams College's *Electra*, directed by Sam Gold (Set Design). B.A. in Theater & Art History from Williams College.

Jessica Pabst (Costume Design) is a NYC-based costume designer. Recent credits include *Be A Good Little Widow* (Ars Nova), *The Hallway Trilogy* (Rattlestick), *3 Pianos* (New York Theatre Workshop), *Ghosts in the Cottonwoods* (The Amoralists), *The Metal Children* (The Vineyard; Henry Hewes Design Nomination), *Roadkill Confidential*, *Vendetta Chrome*, *Quail* (Clubbed Thumb), *Office Hours*, *The Great Recession* and *Love/Stories or But You Will Get Used To It* (The Flea), *There are No More Big Secrets*, *That Pretty Pretty*, or *The Rape Play* (Rattlestick), *Winter's Journey*, *The Less We Talk*, *Dysphoria* (Hoi Polloi); *Crawl Fade into White* (13P); *Camino Real*, *The Great God Brown*, *Uncle Vanya* (Columbia). Jessica is a Clubbed Thumb Associate Artist. Her work has also appeared at NYU School of Opera, Atlantic Theatre School, HERE, Dixon Place, Tribeca Performing Arts, Red Bull Theatre, The Hangar Theatre, Dance Theatre Workshop, SPF, NYMF, and NY Fringe Festival. NYU Tisch School of the Arts.

Shane Rettig (Sound Design) New York: *The Inexplicable Redemption of Agent G*, *Alice in Slasherland* (Vampire Cowboys), *Sugar House*, *Microcrisis* (Ma-Yi), *One Arm*, *Marie and Bruce*, *A Lie of the Mind*, *The Starry Messenger*, *Groundswell*, *Mourning Becomes Electra*, *Rafta, Rafta...*, *The Music Teacher* (The New Group), *Civilization: All You Can Eat*, *Dearest Eugenia Haggis* (Clubbed Thumb), *Photograph 51*, *Lenin's Embalmers*, *2008-2010 Marathon* (EST), *In the Footprint*, *Nobody's Lunch* (The Civilians), *Goodbye Cruel World*, *Save the World* (Roundtable), *Perdita* (The Lion), *Dark Matters* (Rattlestick), *The Unknown* (NYMF), *Suitcase*, *Everything Will Be Different* (Soho Rep). Sound Design Exhibition in the 2007 Prague Quadrennial. Faculty: Rutgers University.

David Valentine (Puppet Design) Vampire Cowboys: *The Inexplicable Redemption of Agent G*, *Alice in Slasherland* (2010 NYIT Award nom.), *Soul Samurai*, *Fight Girl Battle World* (2008 American Theatre Wing's Henry Hewes Design Award nom.), *Living Dead in Denmark*, *A Beginners Guide to Deicide*. Other puppet work: *F#@king Up Everything* (NYMF 2009), YouTube's *Dr. Coolsex Comedy*, *Drama of Works*, McCarter Theatre, Enchantment Theatre Company, Theatre Ariel, French Woods Festival, Hershey Theme Park, and Puppet Heap. For more info: facebook.com/davidvalentinepuppets

Mike Chin (Fight Director) is a professional actor (AEA, AFTRA, SAG) as well as a sanctioned Master instructor & fight choreographer with the Society of American Fight Directors. He's taught/choreographed/consulted in the NY area on Broadway, off-Broadway and throughout the city, as well as at regional theatres across the country. Mr. Chin currently teaches at The Juilliard School, Muhlenberg College in Allentown, PA, Brooklyn College, Pace University and privately for Fights4. www.SAFD.org

Emily Edwards (Choreographer) is the resident choreographer for NJIT/Rutgers Musical Theater Program (*Pippin*, *Sweeney Todd*, *Once on This Island*), has choreographed several original shows in the city including *Jaws: The Musical*, and *Galactic Girl in: Attack of the Starbarians* (most recently performed at New York Comic Con), and is a choreographer for The Artists' Lab. When not creating dance, Emily performs both locally and internationally with her contemporary dance company Gehring Dancetheatre.

Michelle Kelleher (Stage Manager) is based out of NYC with credits in both New York and New Orleans. Past shows include *Future Anxiety* at The Flea, *Relativity*, *Lieutenant of Inishmore*, *Doubt* and the premiere run of John Biguenet's *Rising Water* at Southern Rep Theater, New Orleans. More recently she has worked as the Stage Manager on the NY premiere runs of *The Wendigo* (The Vagabond Theatre Ensemble), *Last Life* (at The Brick Theater and Ohio Theater), *Lavaman* (Aztec Economy), *The Prophet of Monto* (Solas Nua), *Wake Up, You're Dead!* (La MaMa E.T.C.) and *A World Apart* (Creation Production Company) as well as *Cold Keener* (Target Margin Theater), *Lack of Breath* (NY Fringe Festival), *Penang* (Boo Art Productions), *Gormanzee and Other Stories* (anna&meredith) and the first national tour of *History of the Word* (Off Broadway Booking). Michelle has also enjoyed several seasons as PSM for The Patchwork Players, a long running local children's theater ensemble in New Orleans now celebrating its twenty-sixth year. She studied at Tulane University where she received her Bachelor's Degree in Theater Production.

THE FLEA STAFF



Jim Simpson (Artistic Director) is the Founder and Artistic Director of The Flea Theater (2004 Drama Desk cited for Downtown Adventurous Theater). Two-time OBIE-award winner, 2002 National Board of Review Excellence in Filmmaking, and cited for artistic leadership in Downtown New York by the Lower Manhattan Cultural Council in 2002. Jim has directed over 70 works for the theater and has also directed for film and television. Venues include nine seasons at the Williamstown Theater Festival, Alley Theater, Hartford Stage, Yale Rep, Actor's Theater of Louisville, Eisenhower Theater at the Kennedy Center, Lincoln Center, Playwrights Horizons, EST, CSC, MCC, the London International Theater Festival and the Melbourne Fringe Festival. Jim was a child actor in his hometown of Honolulu, as a teenager worked with Jerzy Grotowski in Poland, and holds degrees from Boston University School for the Arts and the Yale Drama School. Most recently, Jim directed A. R. Gurney's *Crazy Mary* at Playwrights Horizons, Will Eno's *Oh, The Humanity...*, the revival of Peter Handke's *Offending The Audience*, Addison's *CATO*, Thomas Bradshaw's *Dawn*, Gurney's *A Light Lunch* and *Office Hours*, Will Eno's *UNUM* as part of The Flea's *The Great Recession*, Jonathan Reynolds' *Girls in Trouble*, Bathsheba Doran's *Parents' Evening* & Steven Banks' *Looking at Christmas*.



Carol Ostrow (Producing Director) joined Jim Simpson at the helm of The Flea in 2001 & *The Guys* marked her return to Off-Off-Broadway. She was the OBIE-award winning Producing Director of the Classic Stage Company, where she produced *The Merchant of Venice*, directed by Jim Simpson, the world premiere of Ezra Pound's *Elektra*, directed by Carey Perloff as well as the acclaimed 30th anniversary production of Pinter's *The Birthday Party*, among others. She was the founder and original Producing Director of The Powerhouse Theater at Vassar, now in its 24th season. In between, she has also been an adjunct professor of theater at Vassar College, Chatham College and McGill University. For The Flea, Carol has produced A.R. Gurney's *O Jerusalem*, *Mrs. Farnsworth*, *Screen Play*, *Post Mortem*, *A Light Lunch* and *Office Hours*, Elizabeth Swados' *JABU* and the Swados/Erin Courtney collaboration *Kaspar Hauser*, Will Eno's *Oh, The Humanity and other exclamations*, Mac Wellman's *Cellophane* and *Two September*, Roger Rosenblatt's *Ashley Montana Goes Ashore in the Caicos...* and *The Oldsmobiles*, Adam Rapp's *Bingo with The Indians*, Itamar Moses' *Love/Stories (or But You Will Get Used to It)*, Beau Willimon's *Lower Ninth*, Thomas Bradshaw's *Dawn*, Polly Draper's *Getting Into Heaven*, Len Jenkin's *Like I Say* and *Margo Veil*, Talking Band's *The Parrot*, the holiday extravaganza *'Twas the Night Before*, short plays by Christopher Durang, among others, the recent Flea commission, *The Great Recession*, an evening of short plays by Thomas Bradshaw, Sheila Callaghan, Erin Courtney, Will Eno, Itamar Moses and Adam Rapp, Jonathan Reynolds' *Girls in Trouble*, Bathsheba Doran's *Parents' Evening*, and Steven Banks' *Looking at Christmas*. She is also behind the numerous dance and music programs presented at The Flea. Carol is a graduate of Vassar College and the Yale Drama School. She is a board member of LAVA, an acrobatic dance collective, serves on the President's Advisory Council of Vassar College and the Board of Advisors of the Yale Drama School, and is one of the newest trustees to one of the oldest congregations in New York City, Central Synagogue. Married and the mother of four incredible young adults, she and her family count Pittsburgh, London, Montreal and now New York City once again as home.



Beth Dembrow (Managing Director) has been with The Flea since 2007, working on *Los Angeles* by Julian Sheppard, *Oh, The Humanity and other exclamations* by Will Eno, *Lower Ninth* by Beau Willimon, *Kaspar Hauser* by Liz Swados & Erin Courtney, *Love/Stories (or But You Will Get Used to It)* by Itamar Moses, *The Great Recession*, an evening of short plays by Thomas Bradshaw, Sheila Callaghan, Erin Courtney, Will Eno, Itamar Moses and Adam Rapp, *Girls in Trouble* by Jonathan Reynolds, *Parents' Evening* by Bathsheba Doran, and all other mainstage and downstairs productions. Prior to her arrival, she spent two and half years at Lincoln

Center Theater where she worked on all mainstage and second stage productions, including the Tony-Award winning productions, *The Light in the Piazza* and Tom Stoppard's *The Coast of Utopia*. Other management experiences with Snug Harbor Productions (Steven Chaikelson and Brannon Wiles) include: *Elaine Stritch at Liberty* (Broadway); *Harlem Song*, Salman Rushdie's *Midnight's Children* (Apollo Theater); *They Wrote That?*; *Private Jokes*, *Public Places*; *The Tricky Part*; *Our Fathers and Dudu Fisher's Something Old, Something New* (Off and Off-off Broadway). Beth holds a B.A. from Cornell University and an M.F.A. in Theater Management and Producing from Columbia University.

THE FLEA STAFF

Liz Blessing (Technical Director) Liz is happy to have found a home at The Flea Theater. Before coming to the Flea she was the Draftsperson for I. Weiss, creating construction drawings for rigging system installation on Broadway and beyond. Previous to that she was an Engineering Assistant for City Theatrical, Inc, where she helped test the W-DMX system. Liz has a B.S. from The College of William and Mary.



Penn Genthner (Development Manager) joined the staff of The Flea Theater after over five years at the Pasadena Playhouse in Southern California, where he held the titles of Grants Manager, Tour Coordinator, and Archivist. In these various roles, he helped the company secure major state and institutional funding and deepen public knowledge about its rich and under-celebrated history. As the Playhouse's historian, Penn was frequently invited to speak about theater history for various clubs and community organizations, including serving as a guest lecturer at Occidental College. He has worked around the country as Development Consultant to the LA-based Furious Theatre Company and Nom de Guerre Theatre Guild, as well as at Minnesota's Guthrie Theatre and the Park Playhouse in Columbus, OH. He has served on the Board of Directors of the Pasadena Playhouse Alumni & Associates and the New York non-profit Caring Cameras. He graduated from Bennington College in 2005 with a B.A. in Theatre.



Dane Joseph (Marketing & Membership Manager) Dane is extremely excited to be joining The Flea after recently completing his masters in Arts Administration at Columbia University. Most recently, Dane was a Production Associate at CNBC in Primetime Programming and Development, working on a host of shows & CNBC specials. Other experience includes Audience Development Associate at Paper Mill Playhouse and casting work for both Paper Mill and MelCap Casting on a variety of off-Broadway, Broadway, touring, regional, and film projects. Dane has also held positions at Bravo and Roundabout Theatre Company, and was a 2004 New York City Government Scholar. A Detroit native, Dane graduated magna cum laude from Seton Hall University with a B.A. in History & Economics.



Sarah Wansley (Company Manager) directed an ensemble for *#serials@theflea*. As a Directing and Producing Assistant at the McCarter Theatre, Sarah assisted such inspiring directors as Tina Landau, Emily Mann and Roger Rees, and directed a ten-minute play as part of McCarter's Youth Ink festival. She is also the founding Artistic Director of Aporia Theater. With Aporia, Sarah has directed and produced *Follow Me Down* at The Flea, *The Disappearance of Jonah* in the DC Fringe Festival, *Bare Naked Drama* at the Cherry Pit and Jimmy's No. 43, and *No Exit* at the Cherry Lane Studio. She also produced the sold-out run of *Art of Attack* in the New York Fringe Festival this year. Sarah graduated summa cum laude from Columbia University with a B.A. in English Lit.



Kyle Crose (Assistant Technical Director) has worked as the Technical Director for the St Louis Ballet, and has installed theatrical lighting systems, fly systems, sound, and curtain systems all over the Kansas City area. He was technical director of three spaces in New Orleans with the Jefferson Performing Arts Society. This is his first permanent position in NYC and he is proud to be working with such a talented crew. In his spare time Kyle likes to run, not from anything in particular but for reasonably long distances and at reasonably high speeds. Kyle is still an active freelancer and also a strong believer in shameless self promotion, so if you need any technical theatre work done, don't hesitate to e-mail me!

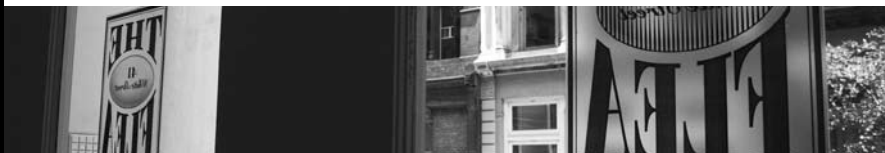


WHAT IS THE FLEA?

The Flea is our theater: two small, unique performance spaces, located here at 41 White Street in Tribeca. The Flea regularly presents diverse, cutting-edge, and multi-disciplinary work, and has rapidly become a vital part of the city's cultural landscape. A state-of-the-art performance facility, The Flea has presented over 100 plays, 50 dance events, and 50 concerts since its founding fifteen years ago.

With talent, dedication, and a black belt in shoestring budgeting, we have reached our fifteenth season. Founded in 1996 by a group of acclaimed downtown theater artists, the award-winning Flea Theater was originally formed out of the purely artistic impulse to create "a joyful hell in a small space." We quickly became a downtown beacon for creative artists of every discipline, and soon a more formal mission was born: to raise the standards of Off-Off-Broadway for artists and audiences alike. Comfortable seats and decent dressing rooms became as much a part of our mission as talented artists and big ideas.

Now, in 2011, with a special achievement Drama Desk Award, an Otto, and two OBIE Awards to our credit, The Flea continues to embody the spirit of adventure and experiment that has defined Off-Off-Broadway since its inception. Part playground, part laboratory, and part training ground, we are home to emerging artists developing their ideas, mid-career artists solidifying their identities, and established artists going in new directions. With the continued participation of our founders and an ever-growing community of diverse and talented artists, our aim is to keep New York theater vital and to represent the wide range of what is possible Off-Off-Broadway.



WHO & WHAT ARE THE BATS?

The Bats are our young resident company. Each year, over a thousand young actors audition for a place in this unique company. The Bats perform in long runs of challenging classics and new plays. Not a school, but a repertory company, The Bats also work to support all of the visiting artists at The Flea.



WHAT IS OFF-OFF-BROADWAY?

Dating back almost fifty years, Off-Off-Broadway is distinguished by a spirit of adventure. It is where established artists go to take risks that the commercial arena does not allow, and it is where young, aspiring writers, directors, and performers learn their craft, develop their talents and begin their professional careers. Non-institutional and resolutely non-commercial, Off-Off-Broadway is as eclectic and varied as the city of New York. While other cities enjoy alternative theater and performance, none have communities as large and vital as New York's Off-Off-Broadway. Welcome and enjoy!

Visit www.theflea.org for videos, photos, and information on all things Flea!
Find "The Flea Theater" on Facebook, Twitter & YouTube

THE BOARD OF DIRECTORS

Chair

Paul J. Elston

President

Jim Simpson

Secretary

Carol Ostrow

Treasurer

Emmeline Wexer

Kyle Chepulis

Robert Eimicke

Michael Graff

Jamie Harris

Douglas Liebhafsky

Andrea Miller

David Prittie

Bernadette Speech

Basil Walter

Sigourney Weaver

Katherine Weinhoff

Davis Weinstock

THE FLEA CIRCUS CAMPAIGN

Fifteen years ago The Flea's founders undertook an artistic experiment, renting an old TriBeCa factory in the wilds of Lower Manhattan and opening the doors to the most iconoclastic and talented artists they could find. Since then The Flea has evolved into an award-winning theater known for presenting the very best of Off-Off-Broadway theater, music and dance.

We have also become an emblem for the resilience of Lower Manhattan, drawing more than 150,000 people to the area since the 9/11 attacks. To continue in that leadership role, we recently purchased a site nearby that is soon to become our permanent new home. Our goal is to continue producing our own intimate and exhilarating work while providing stability to dozens of other artists and performance groups. We are grateful to the following for their lead gifts to the project:

\$1,000,000 +

Anonymous

City of New York, Manhattan Borough President's Office, at the request of Scott Stringer

Empire State Development Corporation, at the request of Governor George E. Pataki

The Lower Manhattan Development Corporation

NYC Executive Funds

\$500,000 – \$999,999

Michael Graff & Carol Ostrow

A. R. & Molly Gurney

New York City Council, at the request of Margaret Chin

New York City Council, at the request of Jimmy Van Bramer

The September 11th Fund,

through the Office of Mayor Michael R. Bloomberg

\$250,000 – \$499,999

Anonymous

Douglas Liebhafsky & Wendy Gimbel

Sigourney Weaver & Jim Simpson

\$100,000 – \$249,999

Kyle Chepulis

Paul J. Elston & Frances Beinecke

International Creative Management, Inc.

David Prittie

State of New York, at the request of State Senator Tom Duane

Basil Walter

Davis Weinstock & Elizabeth Hawes

\$50,000 – \$99,999

Lower Manhattan Cultural Council

Walter Howley

Katherine & Samuel Weinhoff

\$25,000 – \$49,999

Jim & Suzy Cameron

Massey Knakal Real Estate

New York State Council on the Arts

Daniel & Sue Rothenberg

\$1,000 – \$24,999

Tom & Meredith Brokaw

Arthur & Linda Carter

Al & Roma Connable

John & Karen Erickson

Joseph F. Godfrey & Keith Halstead

James & Toni Goodale

Mary G. Gurney

Carol Tambor & Kent Lawson

Edward McKinley & Kathleen Lavidge

Andrea & George Miller

Michael Miller

Mike Nichols & Diane Sawyer

Emma Sheaffer Charitable Trust

Bernadette Speach &

Jeffrey Schanzer

David & Deborah Trainer

Victoria G. Traube

Emmeline Wexer

Under \$1,000

Robert Ackerman & Carol Weston

Alliance of Resident Theatres/New York

Peter & Panda Coley

Mary & Gordon Gould

Benjamin S. Gurney & Ann Baskowski

Christopher Bumcrot & Evelyn R. Gurney

George G. & Constance W. Gurney

Stephen R. Gurney

Howard Kaminsky

Claire W. Labine

Frederick S. & Amy G. Nicholas

Alan Shayne & Norman Sunshine

Sally Wardwell

For more information on our Capital Project, please contact Carol Ostrow, (212) 226-0051 x104



FOUNDATIONS, CORPORATIONS, GOVERNMENT & INDIVIDUAL SUPPORT

\$50,000+

Bloomberg Philanthropies

\$25,000 - \$49,999

The National Endowment for the Arts
NYC Department of Cultural Affairs
Warburg Pincus

\$10,000 - \$24,999

American Theatre Wing
Fan Fox & Leslie R. Samuels Foundation
FDNY Foundation
Steven & Donna Gartner
Harold & Mimi Steinberg Charitable Trust
Jamie & Jeffrey Harris
Douglas Liebhafsky & Wendy Gimbel
Office Max
Prospect Hill Foundation
Shubert Foundation
Edward & Sally VanLier Fund of the
New York Community Trust

\$5,000 - \$9,999

Achilles Foundation
American Express – Fall Downtown
Bank of America Merrill Lynch
Barbara & Richard Booth
Monica & Stefano Corsi
Kent Lawson & Carol Tambor
Lucille Lortel Foundation
Andrea & George Miller
New York State Council on the Arts
Nick & Julie Sakellariadis

\$2,500 - \$4,999

The Axe-Houghton Foundation
James Cameron

Larry Condon
Jennie & Richard DeScherer
The Dorothy Strelsin Foundation
Foundation for Contemporary Arts
The John Golden Fund
Home Box Office, Inc.
William M. Hurt
Jockey Hollow Foundation
Rona & Randolph M. Nelson
Gigi Sharp & George Gilpin
Elizabeth Duggal Taghipour
Cathy & Stephen Weinroth

\$1,000 - \$2,499

Gay & Harry Abrams/
Abrams Artists Agency
Catherine & Fred Adler
John E. Tavss & Virginia Arcari
Eric Seiler & Darcy Bradbury
The Barbara Bell Cumming Foundation
The Dramatists Guild Fund
The Edith Meiser Foundation
Robert Eimicke & Roz Black
Frances Finlay
Harold Smith & James Franzen
The Friars Foundation
Jane R. Gelfman
Elena & Everardo Goyanes
Jennifer Granozio
JoAnn & Bernard Kruger
Judi & Douglas Krupp
Carla Solomon & Antonio Magiocco
Laurie & Jay Mandelbaum
Kathleen Murray & William Plapinger
Wendy M. Siegel
Harry & Jennifer Stout
Emmeline Wexer

Harry & Jennifer Stout
Emmeline Wexer

Partners (\$500+)

Anonymous
Elizabeth & David Beim
Frederick & Candace Beinecke
Catherine Cahill & William Bernhard
George & Jane Bunn
William W. Cobbs
Ellen Davis
Fred & Susan Foster
Geoffrey & Sarah Gund
Geoff Isles
Mr. & Mrs. Bernard Kamine
Carol M. Kaplan
Diane & Walt Looney
Payne Middleton
The New York Foundation for the Arts
Douglas, Nancy & Molly Ostrow
Laurence Hazell & Mimi Quillin
Sarah Beinecke & Craig Richardson
Jonathan F.P. Rose
Margaret Satchell, MD
Joanne & Daniel C. Smith
Charbel & Aida Tagher
Stephanie Garry & Art Tatge
Robert G. Thacker
Edward & Elizabeth Tirrell
Edward Trach
Jerome & Mary Vascellaro
Robert & Carol Walker
Saluggi's
Basil Walter
Steve & Nancy Schwartz-Weinstock

THE FLEA I.P.'S

In June of 2009, we established a new initiative called The Flea I.P.s. The Flea Theater represents a wide range of theatrical possibilities and our Flea I.P.s are the people who make these possibilities a reality. Comprised of our most loyal supporters, our Flea I.P.s participate in exclusive events that provide insider access, including private talk-backs and intimate dinners with the artists that call us home – just to name a few of the perks. The Flea I.P.s have committed their support for three full years, generously pledging \$5,000 each year.

Psssst! Interested? We'd love to welcome you to The Flea I.P.'s, too!
Please contact **Penn Genthner** at 212.226.0051 x 110 or penng@theflea.org for more information.

The Flea proudly salutes our founding Flea I.P. members & thanks them for their unwavering support:

- | | | |
|---------------------|--------------------------|---------------------------|
| Frances Beinecke | Michael Graff | Peter Joseph & |
| John Beinecke | Celeste Guth | Elizabeth Scheuer |
| Ginny Benzak | Jeanne & Tom Hardy | Catherine Schreiber & |
| Lois Chiles | Wendy & David Hashmall | Miles Ruthberg |
| Douglas Durst | Loretta Hennessey | Melissa Vail & Norm Selby |
| Paul Elston | Shannon Wu & Joseph Kahn | Nanahya Santana & |
| Heidi Ettinger | Eleanora Kennedy | Hume Steyer |
| Ali Wambold & | Sahra Lese | Katherine & Sam Weinhoff |
| Monica Gerard-Sharp | Caroline Niemczyk | Stephen & Cathy Weinroth |
| | | Davis & Betsy Weinstock |



FLEA MEMBERS

Donors (\$250-\$499)

Edward Albee
Margaret Ball
Joanna Dean
Jamie DeRoy
Sue B. Dorn
Frank & Helga Doyle
Deborah & John Evangelakos
Jacki Florin
Bobby & Vicki Freeman
Mark Richard Gensheimer
Bruce Goodrich
Howard & Bonnie Graff
Lynne Halliday & B.H. Barry
Harry & Eugenie Havemeyer
Joanne Jacobson
Bob & Ida Kowitz
Kate H. Marber
Seth Moskowitz
Felicity Nitz
Ray Cave & Pat Ryan
— Halcyon Foundation
Kathleen E. Shannon
Jeremy Smith
Jerome Florists
Marjorie & Michael Stern
Patricia Sullivan
The Planalp-Trevor
Charitable Trust
Jonathan Weiner
Dan Zamlong & Cammy Grusd

Contributors (\$100 - \$249)

David & Connie Allan
Anonymous (4)
Jacob S. Beinecke
Ennius E. Bergsma &
Judy A. Bergsma Owen
Helena & Peter Bienstock
Barbara Bloom
Lesley Broder & Jeff Picarello
The Bubble Lounge
C&S International Insurance
Brokers, Inc.
David & Lucy Carson
Ronni & Ron Casty
Jeffrey & Susan Chase
David Chau
Frank Christopher
Lawrence & Ronnie Cohen
Laurie Amory de Grazia
Sara & Fred Epstein
George L. Fleming
Dr. Anne Fribourg
Stephen Friedman

Cheryl & Henry Frommer
Betty & Josh Goldberg
Barbara Green
Greenwich House Senior Center
Faith Hackett
Julia B. Hall
John & Diane Haney
Mary R. Hardin
Ryan L. Hart
Anne Herral
Harris & Randee Horowitz
Adi Ignatius & Didna Elliott
Robin A. Jones
Marianne & David Kaplan
Lawrence P. Kenny
Alicia Kershaw & C. Peter Rose
Michele & Steve Klausner
Cynthia Krieger
Roseanne Kumins
Klaus & Peggy Lackner
Katharine Leech
Peter Lehner & Fritz Beshar
Sandy Linter
Mark & Susan Lippitt
Liz & Woody Littlefield
Gregory Long
Kate H. Marber
Sam & Susie MacFarlane
Sheila & David Manischewitz
Stephen & Carolyn McCandless
Doreen Memelo
Richard & Judith Merbaum
Judith Milhous
Fred & Elizabeth Minnich
David Mirkin
Susan J. Mitchell
David & Daria Moore
Leslie Morioka
Charles & Molly Mosely
Dr. Michael A. Myers
Gary S. Nelson
Bruce Colbath & Carol O'Rourke
Harriet Orley
Judith Honig Pasquinnelli
Chris & Rata Patsiga
Paul, Weiss, Rifkind, Wharton &
Garrison Charitable Gift Fund
Jody & Gary Peterson
William Pike
Colin Ramsey
Karen & Andy Rhodes
Mark Rossier
Ellen & Norman Roth
Frances Rubacha
Rabbi Peter J. &
Kerry Rubenstein
Margaret Ruddick
Sharon Semenza &
Bill Robinson
Eleanor W. Shakin
Jane Dawson Shang
Holly & Mark Siegel
Jane & Greg Smith
Fran Smyth
Judith Solomon &
Leonard Hellenbrand
Eric Somers
Laura Starr
Dhuan Stephens
Deidre Ann Sullivan
David I. Taylor
Jay Topkis
Susan & Charles Tribbitt
Peter & Janie Giacomini
Van Olinda
Margaret Warner
Russ Weigel & Jane Reynolds
Claire Warner
Edward B. Whitney
Wayne M. Winnick
Susan J. Wright
Ruth S. Zachary

Members (\$50-\$99)

Frances Beatty & Allen Adler
Joseph Allen
Marcia Anawalt
Anonymous (3)
Jonathan Arak
Karen W. Arenson
Judith & DeWitt Baker
Stuart L. & Mary V. Bell
Drs. Kenneth Brooks Wells &
M. Christina Benson
Gail Berry
Camille Broussard
Paul & Susan Buck
Charles & Helen Cairns
Linda Calandra
Susan Crowe
Allan & Erica Deutsch
Josh & Kerry Dorf
Lynn Shelly & Larry Ellmaker
Charles A. Forma
Melissa Gibbs
Gail Gordon
Fiona Graff & Martin Kurzweil
Robert D. Grant
Susan & Alan Guma

Michael Hackett
Irene Hamm
Jay Harris
Nan Hoffman
Norman Holland
Paul Howard
Mimi Z. Hurley
Buzz & Mary Ann Hutchison
Mary Jacobson
Bill & Karen Kaufmann
Carol W. Kelley
Eugene Kilik
David & Susan Kraus
Anika Larson
Pam Laskin & Ira Reiser
Rebecca Lehrer & Neil Alger
Mark & Katherine Linder
John Harrison
Gail Lussier
Janet Marffin
Bernard Maskit
Kent & Linda McKamy
Steve Oksas
Harold Prince
Gary Purwin
Henry Anthony Reilly
Matthew A. Rosen
Todd & Lori Rosen
Josh Sabarra
Susan & Stephen Schneider
Petra Schumacher
Roberta Lee Scott
Paul Shelly
Donald Shire
Lee Shull
Diana Son
André Spears
Elizabeth Stanton
Jeanne & Steven Stellman
Debra Toppeta
Lawrence Traub
Clarke, Peggy &
Claire Utermohle
Samantha Van Allen
Robert & Judith Waldman
J. Marvin Watts
Judith Wink & Michael Zumoff

**Special thanks to our
\$25 members**

List as of November 4, 2011

COMING SOON

The Flea Theater presents

#SERIALS@THEFLEA: CYCLE 5

the hit late night play competition

December 1-17

Thu - Sat @ 11pm

#serials@theflea is a raucous late night play competition featuring The Bats and some of NYC's hottest young playwrights. Live music and free beer help fuel this weekly event, which runs Thursday, Friday and Saturday nights. All tickets are only \$10.

Tickets: \$10

Available @ the door, cash only. Comes with a free beer from official sponsor Six Point Brewery.

The Flea Theater presents

THESE SEVEN SICKNESSES

January 19 - March 4

Wed - Sat @ 6:30pm; Sun @ 4pm

Thebes needs a cure. Sophocles' seven surviving plays—*Oedipus, In Trachis, Philoktetes, In Colonus, Ajax, Elektra & Antigone*—combine to create a stunning portrait of the human condition, where the intermingling of chance & fate yields disquieting results. A witty & relevant adaptation of the classics, *THESE SEVEN SICKNESSES* is an epic examination of the past & a window on the present.

Tickets: On Sale December 2011

Check www.theflea.org for more info

FLEA REWARDS

Use your Flea Member Card or ticket stub to take advantage of these special offers from our downtown partners.

Macao Trading Co (311 Church St.)

917-848-0117 / macaonyc.com

Make a reservation to receive a complimentary pitcher of Sangria.

Stuzzicheria (305 Church St.)

212-209-4037 / stuzzicheriatribeca.com

Get 10% off bill when you purchase an entrée at this Italian tapas restaurant.

Bread TriBeCa (301 Church St.)

212-334-0200 / breadtribeca.com

Get 10% off your bill with entree purchase

Petrarca (34 White St.)

212-625-2800 / petrarcatribeca.com

Receive a 10% discount on your bill at this Italian restaurant & wine bar

White and Church (281 Church St.)

212-226-1607 / whiteandchurch.com

Enjoy a free dessert with the order of an entrée

Da Mikele (275 Church St.)

212-925-8800 / damikele.com

Receive a 10% discount on the bill

Souths (273 Church St.)

212-219-0640 / southsnyc.com

Sip on a complimentary glass of wine with the order of an entrée

Billy's Bakery (75 Franklin St.)

212-647-9958 / billysbakerynyc.com

Buy one cupcake & get the second 1/2 off.

Edison Park Fast (15 Worth St.)

1-888-PARK-FAST / parkfast.com

First, get a parking ticket at the garage & then get a special ticket voucher at The Flea box office to park for only \$10.

Jerry's Café (90 Chambers St.)

212-608-1700 / jerryscafenyc.com

Get a free specialty drink with an entrée .

Bubble Lounge (228 West Bway)

212-431-3433 / bubblelounge.com

Buy 1 drink & get 1 free or get 20% off a bottle of champagne

Franklin Cafe (222 West Bway)

212-343-3838 / caffebuon.com

Get 10% off your bill with the purchase of an entrée at this cozy Italian eatery.

Churrascaria (221 West Bway)

212-925-6969 / churrascariatribeca.com

Enjoy 10% off your meal at New York's foremost Brazilian steakhouse.

Cercle Rouge (241 West Bway)

212-226-6252 / cerclerougeresto.com

Have a pre-show dinner at this fine French bistro before 7pm and enjoy 10% off bill.

TriBeCa Grill (375 Greenwich St.)

212-941-3900 / myriadrestaurantgroup.com

Enjoy a complimentary sommelier's choice glass of wine with dinner.

Nobu (105 Hudson St.)

212-219-0500 / myriadrestaurantgroup.com

Enjoy Japanese cuisine at its finest and enjoy a complimentary sommelier's choice glass of wine with dinner.

Centrico (211 West Bway)

212-431-0700 / myriadrestaurantgroup.com

Enjoy a complimentary sommelier's choice glass of wine with dinner.

Corton (239 West Bway)

212-219-2777 / myriadrestaurantgroup.com

Enjoy a complimentary sommelier's choice glass of wine with dinner

**CHECK THEFLEA.ORG OR
CALL 212-226-0051 x101
FOR THE LATEST UPDATES &
DEALS.**

Become a Member

THE FLEA THEATER MEMBERS PROGRAM

Get Special Attention. Support The Flea. Be a Member.

Our theater is tiny and we sell out...fast. Members get guaranteed seats plus exclusive discounts, invites, drinks & inside info! All levels of membership are 100% tax-deductible.

\$25 Member

20% discount on tickets to Flea shows
No booking or convenience fee
Guaranteed ticket availability & VIP ticket processing

\$50+ Supporter

All of the above, plus:
Exclusive discounts & deals to partner businesses
Special thanks in Flea programs

\$100+ Contributor

All of the above, plus:
Reserved seating for you and your guests
Exchange tickets up to 24 hours in advance
Complimentary drinks at our bar before every show

\$250+ Donor

All of the above, plus:
Invitations to readings and special events

\$500+ Partner

All of the above, plus:
Access to Broadway house seats (purchase necessary)
Dinner reservations at select Flea partner restaurants

\$1,000+ Patron

All of the above plus:
Invitation to select Opening Night performances and cast parties
Unlimited complimentary drinks
Autographed show poster for a Flea production of your choice

**CLICK HERE, CALL 212.226.0051 x101,
or MAIL/FAX the form below to join!**

I WANT TO JOIN THE FLEA! (Please check membership level below)

\$25 Member

\$50 Supporter

\$100 Contributor

\$250 Donor

\$500 Partner

\$1,000 Patron

NAME (as should be listed) _____

ADDRESS _____

CITY, STATE, ZIP _____

EMAIL _____ PHONE _____

CREDIT CARD # _____ EXP. _____ SECURITY CODE _____

Mail this form with a check to THE FLEA MEMBERS PROGRAM, 41 White Street, New York, NY 10013 or fax this form with your credit card information to (212) 965-1808. Questions or concerns? Call us at 212-226-0051 x102.