



SARAH FLOOD IN SALEM MASS

Written by **Adriano Shaplin**
Directed by **Rebecca Wright**
Featuring **The Bats**





THE FLEA THEATER

JIM SIMPSON ARTISTIC DIRECTOR **CAROL OSTROW** PRODUCING DIRECTOR

BETH DEMBROW MANAGING DIRECTOR

PRESENTS THE WORLD PREMIERE OF

SARAH FLOOD IN SALEM MASS

WRITTEN BY **ADRIANO SHAPLIN**

DIRECTED BY **REBECCA WRIGHT**

FEATURING **THE BATS**

CAITLIN LAINOFF SET DESIGN **DANTE OLIVIA SMITH** LIGHTING DESIGN

NIKKI DELHOMME COSTUME DESIGN **ADRIANO SHAPLIN** SOUND DESIGN

JACOB HALPERN WEITZMAN STAGE MANAGEMENT

CAST

(IN ALPHABETICAL ORDER)

Thomas Putnam.....	Bradley Anderson
Juyoung.....	Jamie Bock
Haley Joel Putnam.....	Tom Carman
Narrator.....	Matthew Cox
Makepeace Nurse.....	Yonghyun Choi
Goody Good.....	Whitney Conkling
Little Pride.....	Hannah Finn
Ann Sr. Putnam.....	Glenna Grant
John Paul Farmer.....	John Paul Harkins
Liz Pharaoh.....	Kana Hatakeyama
Old Becky Nurse.....	Christine Lee
Israel Pharaoh.....	Hank Lin
Samm Pride.....	Jeff Ronan
Laura Indian.....	Isabella Sazak
Ann Jr. Putnam.....	Michelle Silvani
Mercy.....	Mariette Strauss
Sarah Flood.....	Kate Thulin
Sheriff.....	Nate Washburn

UNDERSTUDIES

Pharaoh, John Paul Farmer, Haley Joel.....	Yong Hyun Choi
Sarah Flood, Laura, Ann Sr. Goody Good, Liz.....	Elizabeth May
Sheriff, Thomas Putnam, Pride, Narrator, Makepeace..	Jed Krivisky
Mercy, Ann Jr., Juyoung, Becky Nurse, Little Pride.....	Elly Smokler

Thank you to all The Bats who participated in the December 2012 workshop:

Isabella Sazak, Rachel Lin, Christin Eve Cato, Christine Lee, Elizabeth May,
Charlotte Bydwell, Olivia Stoker, John Paul Harkins, Ugo Chukwu,
Artem Kreimer, Nate Washburn, and Layla Khoshnoudi.

Additional thanks to Emilie Krause, Sarah Yoko Howard, Julia Frey,
Jeb Kreager, Drew Friedman, and ETC.

CREATIVE TEAM

Playwright.....	Adriano Shaplin
Director.....	Rebecca Wright
Set Designer.....	Caitlin Lainoff
Lighting Designer.....	Dante Olivia Smith
Costume Designer.....	Nikki Delhomme
Sound Designer.....	Adriano Shaplin
Stage Manager.....	Jacob Halpern Weitzman

FLEA STAFF

Artistic Director.....	Jim Simpson
Producing Director.....	Carol Ostrow
Managing Director.....	Beth Dembrow
Technical Director.....	Liz Blessing
Company Manager.....	Erin Daley
Development Associate.....	Alek Deva
Marketing Associate.....	David Sernick
Audience Development Associate.....	Dominic Spillane
Assistant Technical Director.....	Brandon Stock
Graphic Designer.....	Maria Shaplin
Videographer.....	Crystal Arnette
Photographer.....	Hunter Canning
Costume Manager.....	Josh Boerman
Sarah Flood Costume Manager.....	Sarah Anderson
Theater, Technical & Production Consultant.....	Kyle Chepulis
Accountant.....	Joel Faden & Company, Inc.
Attorney.....	Carol M. Kaplan/Mitchell, Silberberg & Knupp LLP
Development Consultant.....	Rachel Colbert
Press Representative.....	Ron Lasko/Spin Cycle

CAST

(IN ALPHABETICAL ORDER)



Bradley Anderson (Thomas Putnam) was most recently seen at Ensemble Studio Theater during the EST Marathon, where he played Joe in Clare Barron's *Solar Plexus*. He has also been in Willie Orbison's EST Brunch play *Targeting Tranquility*. At The Flea he has been in *#serials@theflea*, *The Shakes*, and last spring was in Tommy Smith's *White Hot*. He is currently working with Rob Askins to develop his latest play *Permission*. Brad holds an MFA from the University of Iowa.



Jamie Bock (Juyoung) was recently seen in *White Hot* by Tommy Smith at The Flea, as well as Smith's *Nectarine EP*. Additional Flea credits include *The Shakes* (*Romeo & Juliet* and *The Honest Whore*) and *#serials@theflea*. NYC credits: *Ocean Kingdom* (Magic Futurebox), *Home* (Theater for the New City), *Treefall* (Sargent Theater) and *Breakers* (Stage Left Studios). BFA NYU Tisch – Atlantic Theater Company. Special thanks to Rebecca, Adriano, Jacob, and the whole team at The Flea. www.jamiebock.com



Tom Carman (Haley Joel Putnam) is an actor and composer living in Brooklyn. Flea credits: *The Flying Latke*, *The Shakes: The Honest Whore*, *The Rose Garden Recipe* (workshop), and *The Nomad* (workshop). NYC credits: *Anthem* (Random Access Theatre), *Miss Julie* (Anne Troup dir.) and *Selection* (Wide Eyed Productions). DC credits: *The Tooth of Crime* (WSC Avant Bard), *The Graduate*

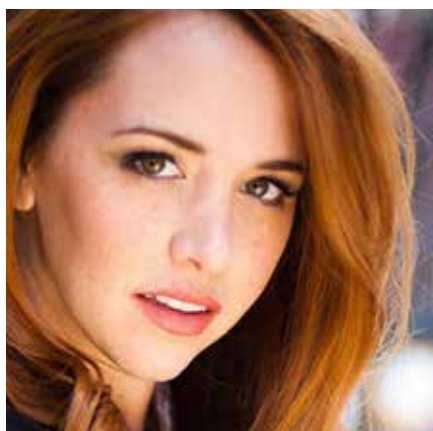
(Keegan Theatre), *The Oogatz Man* (Longacre Lea). Composing credits: *As You Like It* (Lean and Hungry Theatre), *The Tooth of Crime* (WSC Avant Bard), *The Ice Child* (Factory 449), and for ETC's Teen Summer Camp. Much love to all his family and friends who have supported him along the way.



Matthew Cox (Narrator) At The Flea: *Restoration Comedy* (Host/Tunbelly); #*serials@theflea*; *The Shakes: Romeo & Juliet Act III* (Friar Laurence). New York Theater Credits: *The Chicken Situation* (Samuel French OOB); *Brotherly Love* (Left Out Festival); *Blogologues* (Lively Productions). Matt is also a musician, writer, and improviser. He has studied at the Stella Adler Studio of Acting and The Upright Citizens Brigade. He performs on the improv teams Phat Brudder and the Fancy Dinner Club.



Yonghyun Choi (Makepeace Nurse, u/s Pharoah, Farmer, Haley Joel) is excited to make his theatrical debut at The Flea. He currently trains at Wynn Handman Studio, and is a graduate of the William Esper Studio and AMDA.



Whitney Conkling (Goody Good) was last seen as Narcissa in *Restoration Comedy* and New Nurse in *These Seven Sicknesses*, both directed by Ed Sylvanus Iskandar. She has worked regionally at T.U.T.S., Weathervane Rep., 11:11, and Gan-e-meed. Whitney is a proud Native Texan and while in Texas she was a country singer and an opening act for Clay Walker. She is a graduate of The Boston Conservatory. www.whitneyconkling.com



Hannah Finn (Little Pride) is an NYC based theater artist. Recent acting credits include *Jack the Bird* (Tugboat Collective), *The Shakes* (The Flea), *Oedipus Rex* (ATA), *Kisses from Fujiwhara* (Pencil Productions), and *#serials@theflea* (The Flea). Originally from San Francisco, CA, Hannah is a graduate of Oberlin College, where she earned her B.A. in Theater & Dance. Additional training: SITI Company, Berkeley Rep, Reed Birney.



Glenna Grant (Ann Sr. Putnam) is excited to be back onstage at The Flea! Previous NYC credits include *These Seven Sicknesses* (Nurse One), *The Electric Lighthouse* (Cynthia), *#serials@theflea*, *Project '68* (with LAByrinth Theater). In addition to her stage work, Glenna was seen earlier this year in a featured role on Fox Network's *The Following*, and has done voice work on several video games, including *Grand Theft Auto*, and *Red Dead Redemption*. Glenna holds a BFA in Acting from Purchase College, and is a founding member of the Brooklyn based experimental theater group, The Glass Bandits.



John Paul Harkins (John Paul Farmer) has appeared in over 40 productions in New York City, favorite roles include: Richard II, Horatio, John the Baptist, and Ensemble in Judith Malina's *Here We Are* at the Living Theater. Previous Flea credits include: *#serials@theflea*, *The Shakes* (Madman, County Paris) He was the understudy for playwright Adriano Shaplin during The Flea's production of *I Hate Fucking Mexicans*. John Paul also works in film, television, voice over, and modeling. He is also lead singer of the 90's grunge cover band 90 Proof.



Kana Hatakeyama (Liz Pharaoh) The Flea: *Mary-Kate Olsen is in Love* (upcoming, dir. Kristan Seemel), *The Shakes: The Honest Whore* (dir. Danya Taymor), *The Flying Latke*, *#serials@theflea*. Other NYC Theatre credits include: *The Sonic Life of Giant Tortoises* (La MaMa ETC), Tommy Smith's *Tangerine EP* (The Brick). Film: *Split* (dir. Deborah Kampmeier). A Duke University graduate with a BA in Theater & International Studies, Kana also trained at The Eugene O'Neill Theater Center & Michael Howard Studios and has studied traditional theater in her native country of Japan.



Christine Lee (Old Becky Nurse) is a singer, dancer, actor, and a Bat. She is very excited to dive into the world of Salem as Rebecca Nurse. She wants to thank all her fellow artists who inspired her while working on this unconventional and totally cool play. The Flea Theater: *Nectarine EP* (dir. Tommy Smith), *a cautionary tail*, *The Shakes: The Honest Whore* (dir. Benjamin Kamine). New York: *Show Way the Musical* (dir. Melissa Maxwell), Lola Luning's *First Steps* (dir. Andrea Andresakis). *Hecuba* (dir. Joyce Laoagan) Webseries: "Into Girls." www.actorchristinelee.com



Hank Lin (Israel Pharaoh) has performed in original works with Classic Stage Company/Plastic Theatre, Peculiar Works Project, Everyday Inferno, PlaylabNYC, and Coffee Black, as well as in *#serials@theflea*. He is a graduate of Brandeis University.



Jeff Ronan (Samm Pride) Previous credits at The Flea include *These Seven Sicknesses* (Oedipus), *The Shakes*, and *#serials@theflea*, where he has been featured as an actor and a writer. Regional: *Henry V*, *The Electric Baby*, and *Seven Homeless Mammoths* all with Two River Theater, *Red* with Re-Visions, and *The Shape of Things* and *Humbug* with Premiere Stages. Film/Web: *Dead Souls* (Chiller TV original movie), *Stunods* (stunodswebseries.com) and web cartoon *Astro-Cons* (blip.tv/astrocons). BFA from Kean University and training at Moscow Art Theatre School. Additional credits at Jeffronan.com



Isabella Sazak (Laura Indian) Jacques-Louis David in *Vainglorious*, Applied Mechanics, PIFA Festival; Isabella in *Isabella With Her Head in the Clouds* (a one-woman show), Dixon Place; Nina in *The Seagull*, Culbreth Theater; Co-Artistic Director of *Idly Bent Theater Company*; National Theater Institute; SITI Co; University of Virginia.



Michelle Silvani (Ann Jr. Putnam) is a proud native New Yorker. Happy to have been with The Bats since the creation of *#serials@theflea*, additional Flea credits include other late night mayhem *The Shakes*, musical workshops of Jenny Schwartz's *Iowa*, *I Hate Fucking Mexicans* - her first collaboration with Adriano Shaplin, and Tommy Smith's *Nectarine EP*. Other favorite roles have been Van's Sister from *Dog Sees God* at Adelphi University, where she received her B.F.A. in Acting, and Little Sally of *Urinetown*.



Mariette Strauss (Mercy) *The Flea: The Shakes* and *#serials@theflea*. Mariette just filmed *After Tomorrow* (dir. Jill Campbell) produced by Christine Vachon of 20/20/20 Killer Films. She has worked regionally with Michigan's Williamston Theatre and the Notre Dame Shakespeare Festival. Mariette is a proud Michigan State University graduate. She would like to thank the Flea family for making this possible and her family and friends for their endless love and support.



Kate Thulin (Sarah Flood) *The Flea: a cautionary tail* by christopher oscar peña, dir. Benjamin H. Kamine, development lab for *IOWA*, a new musical by Jenny Schwartz and Todd Almond. Kate has also performed with TheaterworksUSA and at Williamstown Theatre Festival. Recent film: Janky Clown Production's *High Maintenance* (w/ Hannibal Buress). Kate does improv and stand-up, and draws creepy cartoons for her blog, (mysisteriscoolerthanyou.tumblr.com). B.A. Vassar College. Coming up: Tugboat Collective/HERE Arts Center's *OBEDIENT STEEL* by Chloe Brown, dir. Rebecca Wear, HERE Arts Center, November 2013.



Nate Washburn (Sheriff) is a proud member of The Bats, other shows at The Flea include *These Seven Sicknesses* (Ed Iskandar), *American Song* (Jim Simpson and Arthur Yorinks), and many weeks of *#serials@theflea*. A Connecticut native, he was recently seen in *The Odyssey Experience* (McCarter Theatre), *Henry V* (Arkansas Rep) and *Love's Labour's Lost* (The Shakespeare Forum). His film and TV work include *Wicked Attraction* (Investigation Discovery) and *Can You Survive a Horror Movie?* (SyFy Channel) and *The Sonnet Project* (NY Shakespeare Exchange). He wishes the best to his friends and ultra-supportive family.

UNDERSTUDIES

(IN ALPHABETICAL ORDER)



Elizabeth May (Sarah Flood, Laura, Ann Sr. Goody Good, Liz) The Flea: *These Seven Sicknesses* and *#serials@theflea*. New York: *Stop the Virgens* at St. Ann's Warehouse, *Missionary in Manhattan* at Theatre for a New City, and *Musical Chairs* at The Brooklyn Lyceum. Regional: *Steel Magnolias* at Triad Stage, *Missionary in Manhattan* at Plays and Players, *The Adrienne*, *Cirque de Vol*, *Elsewhere*, and *Marcus JCCA*. Education: BFA in Acting from The University of North Carolina at Greensboro. Elizabeth is also a co-founder of The Ukulele Orchestra of Great Brooklyn. See more at www.GreatUke.com



Jed Krivisky (Sheriff, Thomas Putnam, Pride, Narrator, Makepeace) has been a resident actor with The Flea since September 2012 and has been seen in *The Shakes: The Honest Whore*, *The Shakes: Romeo and Juliet*, and *#serials@theflea*. Past regional credits include *A Funny Thing Happened on the Way to the Forum* (The Theater Barn), *Wrong Window* and *Next Fall* (Curtain Call Theatre) and the world premiere of *Good-Bye Mary Rose* (Cape Repertory Theatre). Jed has his BA in Fine and Performing Arts from Massachusetts College of Liberal Arts and is currently a resident of Westchester County.



Elly Smokler (Mercy, Ann Jr., Juyoung, Becky Nurse, Little Pride) Previously at The Flea: *The Flying Latke*, *The Shakes: The Honest Whore* and *Romeo and Juliet*, *#serials@theflea*. New York select credits: *Stop the Virgens* (St. Ann's Warehouse; dir. Adam Rapp); *Andre Washington* (The Chain Theatre); *Reconcile, Bitch* (Brooklyn Lyceum; dir. Lisa Szolovits). Various readings/workshops through select venues: The Flea, MCC Theater, and Joes Pub. Regional: *Two Slatterns And A King* (Williamstown Theatre Festival; dir. Knud Adams); *Sitstandwalkliedown* (Williamstown Theatre Festival; dir Phil Soltanoff). Elly graduated from Skidmore college with a degree in Acting. Thank you Alma.

CREATIVE TEAM

Adriano Shaplin (Playwright, Sound Designer) is a playwright, performer, sound designer, and artistic director of the Riot Group, an ensemble he co-founded in 1997. He is the author of 11 plays for the Riot Group including *Wreck the Airline Barrier*, *Pugilist Specialist*, *Victory at the Dirt Palace*, *Freedom Club* and *Sophie Gets the Horns*. In 2004 Adriano joined Pig Iron Theater Company to create the OBIE-award winning *Hell Meets Henry Halfway*, an adaptation of Witold Gombrowicz's *The Possessed*. In 2006 Adriano became the first International Playwright-in-Residence with the Royal Shakespeare Company and his first play for the RSC, *The Tragedy of Thomas Hobbes*, opened at Wilton's Music Hall in London in 2008. Adriano is a four-time recipient of the Scotsman Fringe First, a Sloan Foundation grant recipient, and has been commissioned by Playwrights Horizons, the Royal Shakespeare Company, New Paradise Laboratories, and Interact Theatre Company. His plays have been produced at the Soho Theater and Riverside Studios in London, the Arches in Glasgow, the Magic Theater in San Francisco, the Theater Der Welt Festival in Germany, the Philadelphia Live Arts Festival, Princeton University, the Edinburgh Fringe Festival, the Ice Factory Festival, 59e59 and The Culture Project. His most recent play, *Sophie Gets the Horns*, debuted at the Incubator Arts Project in May 2012. His plays have been published by Oberon Books, Playscripts Inc, and in the Yale School of Drama's Theater journal.

Rebecca Wright (Director) has directed and dramaturged for PlayPenn, the Lark Play Development Center, and InterAct Theatre Company. She has developed work with Philadelphia-based performers for First Person Arts, The Philadelphia Fringe Festival, Micro-Fest Philadelphia, and SoLow Festival. Recent directing credits include *Sophie Gets the Horns* with the Riot Group, *Merry*

Wives of Windsor with Shakespeare in Clark Park, *17 Border Crossings* with Lucidity Suitcase Intercontinental, and *Joan of Arc: Voices in the Fire* with graduating MFA students at Columbia University, co-directed with Kristin Linklater. Rebecca is a co-founder of Applied Mechanics, with whom she creates immersive performance pieces, including Philadelphia Fringe Festival hit *Overseers*, and the 26-person historical fantasia *Vainglorious: The Epic Feats of Notable Persons in Europe after the Revolution*. She is a recipient of a 2012 Independence Fellowship in the Arts and a graduate of Artists U.

Caitlin Lainoff (Set Designer) is an LA based scene and production designer and puppetry artist who received her MFA from CalArts. She has designed for theater, opera, television and film, in Los Angeles, Philadelphia and New York. She has been the Independent Shakespeare Company's scenic designer since 2010 and has been teaching at CSU Northridge since 2008. Sarah Flood is her second production design with the Riot Group; *Sophie Gets the Horns* premiered at Incubator Arts Project and was voted highbrow/brilliant by New York Magazine. She also devises experimental puppetry and recently participated in *Soulographie* at La MaMa.

Dante Olivia Smith (Lighting Designer) is a Lighting and Scenic Designer for theatre and dance. She is delighted to be at The Flea and to work with Rebecca again after a previous collaboration on *Joan: Voices in the Fire* (Columbia) New York: *Waiting for Waiting for Godot* (The Collective), *Carcass* (New Worlds Theatre) *Tender Napalm* and *Love in Transit* (The Shop), *Romeo and Juliet* (Empirical Rogue), *Stabat Mater Fabulosa* (Morningside Opera), *In the Company of Jane Doe* and *Modern Dance for Beginners* (Cake Productions). Notable productions include: the first production of Tony Kushner's *The Henry Box Brown Play*, various Mike Daisey Monologues and Umo Ensemble's *Final Broadcast*. In addition to

designing she is the Creator of *Pandora's Box Project*, a play from many voices and collaborative art project committed to promoting a more productive dialogue about reproductive justice. MFA in lighting design, NYU/Tisch. BFA in lighting and scenic design, Cornish College of the Arts.

Nikki Delhomme (Costume Designer) is a freelance costume designer who recently moved to New York. Her designs have been presented in New York, Chicago, and Los Angeles at companies that include: Yale Repertory Theatre, CalArts University, Disney's RedCat Theatre, A Noise Within, Maltz Jupiter Theatre, Los Angeles Theatre Center, Avant Musical Festival, Theatre at the Center Indiana, Light Opera Works, Piven Theatre Ensemble, Strawdog Theatre, Evanston Dance Ensemble, and the Appletree Theatre. Her work has been showcased at the Prague Quaddrenial. She is the recipient of the Donald and Zorka Oenslager award for Stage Design, the Elizabeth Schrader Award, and was nominated for a Joseph Jefferson Equity award (2008) and a Garland award (2010). MFA Yale University, BFA Carnegie Mellon University. www.nikkidelhomme.com

Jacob Halpern Weitzman (Stage Manager) spent the last year at the Actors Theatre of Louisville as a stage management intern. The 37th Annual Humana Festival of New American Plays: *The Humana Ten-Minute Plays*, *The Delling Shore*, and *Cry Old Kingdom*. Also at Actors: *The Whipping Man*, *Dracula*, and *A Christmas Carol*. Devised work at Actors: *America Boy*, Agatha Christie's *Lost and Drowned*, *The Free Life II*, and *Jimmy the Spray*. Off-Broadway: *In Transit* (Primary Stages) NYC: *Life Could Be A Dream* (NYMF) and *Twelfth Night* (Manhattan Shakespeare Project). Jacob holds a B.A. in Theatre Arts from Hendrix College where he stage managed *Violet: The Musical*, *The Trial*, *What's That? A Hat!*, and *The Hot Mikado*.

THE FLEA STAFF



Jim Simpson (Artistic Director and Founder) Jim was a child actor in his hometown of Honolulu, as a teenager worked with Jerzy Grotowski in Poland, and holds degrees from Boston University School for the Arts and the Yale Drama School. He's worked at many venues in New York City, Nationally and Internationally. Drama Desk cited for Downtown Adventurous Theater, Two-time OBIE-award winner, National Board of Review Excellence in Filmmaking, and cited for artistic leadership in Downtown New York by the Lower Manhattan Cultural Council.



Carol Ostrow (Producing Director) joined Jim Simpson at the helm of The Flea in 2001 and *The Guys* marked her return to Off-Off-Broadway. She was the OBIE-award winning Producing Director of the Classic Stage Company, where she produced *The Merchant of Venice*, directed by Jim Simpson, the world premiere of Ezra Pound's *Elektra*, directed by Carey Perloff as well as the acclaimed 30th anniversary production of Pinter's *The Birthday Party*, among others. She was also the founder and original Producing Director of The Powerhouse Theater at Vassar, now in its 28th season. In between, she has been an adjunct professor of theater at Vassar College, Chatham College and McGill University. For The Flea, Carol has produced dozens of world premieres and has been responsible for sound fiscal management of the theater's \$1M budget for eleven years. In addition to expanding and professionalizing infrastructure at The Flea, she helped to develop the theater's current 18-member board of directors and has overseen the launch of a patron program that has raised more than \$300,000 in the past three years. She has produced the theater's successful galas and has helped The Flea win prestigious grants from The Andrew W. Mellon

Theater Program, The National Endowment of The Arts, The Lower Manhattan Development Corporation, The Empire State Development Corporation and The Shubert Foundation, among many others. Carol is a graduate of Vassar College and the Yale Drama School. She is a board member of LAVA, an acrobatic dance collective, serves on the President's Advisory Council of Vassar College and the Board of Advisors of the Yale Drama School, and on the executive committee of one of the oldest congregations in New York City, Central Synagogue. Married and the mother of four incredible young adults, she and her family count Pittsburgh, London, Montreal and now New York City once again as home.



Beth Dembrow (Managing Director) has been with The Flea since 2007 working on *Oh, The Humanity and other exclamations* by Will Eno, *Lower Ninth* by Beau Willimon, *Kaspar Hauser* by Liz Swados & Erin Courtney, *Love/Stories (or But You Will Get Used to It)* by Itamar Moses, *The Great Recession*, an evening of short plays by Thomas Bradshaw, Sheila Callaghan, Erin Courtney, Will Eno, Itamar Moses and Adam Rapp, *Girls in Trouble* by Jonathan Reynolds, *Parents' Evening* by Bathsheba Doran, *She Kills Monsters* by Qui Nguyen, *These Seven Sicknesses* by Sean Graney and all other mainstage and downstairs productions. Prior to her arrival, she spent two and half years at Lincoln Center Theater where she worked on all mainstage and second stage productions, including the Tony-Award winning productions, *The Light in the Piazza* and Tom Stoppard's *The Coast of Utopia*. Other management experiences include various Broadway and Off Broadway with Snug Harbor Productions (Steven Chaikelson and Brannon Wiles). Beth holds a B.A. from Cornell University and an M.F.A. in Theater Management and Producing from Columbia University.



Liz Blessing (Technical Director) Liz is happy to have found a home at The Flea Theater. Before coming to the Flea she was the Draftsperson for I. Weiss, creating construction drawings for rigging system installation on Broadway and beyond. Previous to that she was an Engineering Assistant for City Theatrical, Inc, where she helped test the W-DMX system. Liz has a B.S. from The College of William and Mary.



Erin Daley (Company Manager) comes to The Flea after spending last year producing Arena Stage's Eugene O'Neill Festival in Washington D.C. Prior to this; she spent three years as a coordinator in Los Angeles working in film and commercials before her love of theater tore her away. After cutting her teeth as an independent producer and director, Erin is thrilled to have found a home at The Flea where she can continue to work on exciting and innovative new theater. Erin is proud to have graduated from Skidmore College, Class of 2008.



Dominic Spillane (Audience Development Associate) began working with The Flea Theater in 2009 as an actor in *The Great Recession* performing in Sheila Callaghan's *Recess* directed by Kip Fagan, *Classic Kitchen Timer* by Adam Rapp, and *Severed* by Erin Courtney. In 2011 he and partner Stephen Stout created and produced the hit late-night play competition *#serials@theflea*, now in its second year running. As a producer Dominic created the short film "Falling Down" which toured 4 international film festivals, and the one-act festival *Dancing With Myself* at the Working Stage theater in Los Angeles. In 2012 Dominic directed *Bea Arthur and the Knights of the Round Table* by Joe Tracz (Ars Nova's ANT Fest), and *Lighthouse* by Charlotte Miller (Rattlestick Playwrights Theater's TheaterJam). He has also directed short plays by Stacy Davidowitz and Leslye Headland.



David Sernick (Marketing Associate) graduated from Indiana University with a double BA in Political Science and Theatre & Drama along with a Certificate in Arts Administration. From 2009 – 2012 David was the Marketing Associate at Barrington Stage Company where he cultivated younger audiences with new media strategies thanks to a Future Audiences Grant from TCG. David founded Black Swan Theatre Project in Grand Rapids, MI and InPulse Productions in Bloomington, IN where he directed, produced and occasionally acted. Other directing credits include assistant directing at Barrington Stage Company and directing for Barrington Stage's inaugural 10×10 New Play Festival.



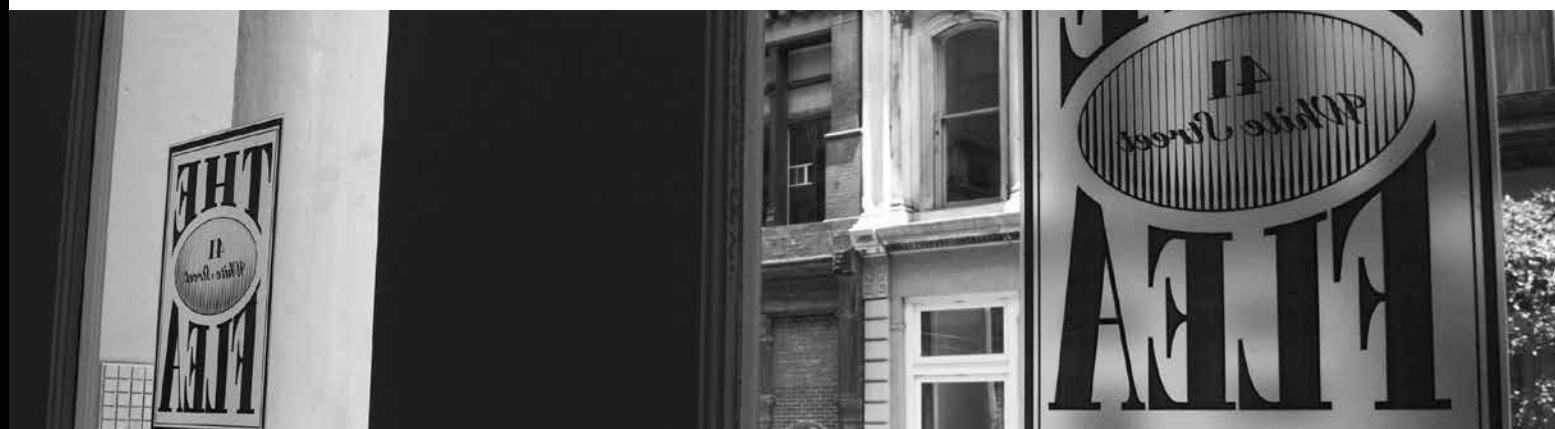
Alek Deva (Development Associate) received a degree in English with a focus in Poetry Writing from the University of North Carolina at Chapel Hill. During his tenure at UNC-CH, Alek worked nearly full time as the Master Electrician and in-house Lighting Designer at the University's world-class Memorial Hall, the main performance venue of Carolina Performing Arts. After working with numerous theater, dance, and music artists from around the world, he decided to make the transition to the other side of the curtain. Alek studied for a year at the University of North Carolina School of the Arts in their Performing Arts Management MFA program, during which time he produced a world premiere percussion and piano performance featuring award-winning percussionist Scott O'Toole and composer/pianist Alicia Willard. He most recently worked at the Weston Playhouse Theatre Company as their Marketing Associate, where he developed a dynamic and successful marketing campaign for world premiere musical *Pregnancy Pact* (by Gordon Leary and Julia Meinwald).

WHAT IS THE FLEA?

The Flea is our theater: two unique and intimate performance spaces, located here at 41 White Street in Tribeca. But The Flea is also an award-winning producing organization, founded in 1996, that offers more than 250 cutting-edge theatrical and multi-disciplinary performances each year and gives voice to some of the most exciting and innovative writers of our time.

Founded from the purely artistic impulse to create “joyful hell in a small space”, our body of work has earned us accolades from across the globe including two Obie Awards for Best Production, an Otto for Courageous Political Theater, and a Drama Desk Award Special Award for our commitment to adventurous theater. Our 2001 production of *The Guys*, a raw artistic response to the events of 9/11, became a phenomenon that played to sold-out houses for 13 months and quickly cemented our leadership role in the downtown, Off-Off-Broadway and Lower Manhattan communities.

The Flea is a beacon for adventurous audiences and creative artists of all stripes, from the young striver to the legendary veteran. More than 150,000 people have come to The Flea to witness the rare spark created when artists are given free rein to play, experiment and invent—often in ways that the commercial theater can’t support. And it is that spark that fulfills our mission, pure and simple: to embody the spirit of adventure and excitement that has defined Off-Off-Broadway since its inception.



WHO & WHAT ARE THE BATS?

The Bats is our critically acclaimed resident company, cast anew each year from over 1,000 aspiring young actors. Voted “Best Off-Off-Broadway Company to Act In” by Backstage, being a Bat offers young artists the rare opportunity to break into the field with real life experience, performing in front of an audience on a regular basis and working to support The Flea and its visiting artists. All in one night, a Bat may tear your ticket, pour you a drink and rivet your soul to the stage.



WHAT IS OFF-OFF-BROADWAY?

Dating back almost fifty years, Off-Off-Broadway began informally--an alternative, non-commercial environment where new ideas and projects were born out of energetic and often happenstance encounters. Hundreds of well-known artists credit this adventurous and free-spirited time with their falling in love with theater, and getting good at what they do.

Visit www.theflea.org for information on all things Flea!

Find The Flea Theater on Facebook, Tumblr, Twitter & YouTube

THE BOARD OF DIRECTORS

Chair

Jamie Harris

President

Jim Simpson

Secretary

Douglas Liebhafsky

Treasurer

Emmeline Wexer

Kyle Chepulis

Robert Eimicke

Paul J. Elston

Michael Graff

Wendy Harrison Hashmall

Andrea Miller

Carol Ostrow

David Prittie

Nanahya Santana

Linda Schupack

Bernadette Speach

Tony Tramontin

Basil Walter

Sigourney Weaver

Katherine White Weinhoff

Stephen Weinroth

Davis Weinstock

THE FLEA CIRCUS CAMPAIGN

Fifteen years ago The Flea's founders undertook an artistic experiment, renting an old TriBeCa factory in the wilds of Lower Manhattan and opening the doors to the most iconoclastic and talented artists they could find. Since then The Flea has evolved into an award-winning theater known for presenting the very best of Off-Off-Broadway theater, music and dance.

We have also become an emblem for the resilience of Lower Manhattan, drawing more than 150,000 people to the area since the 9/11 attacks. To continue in that leadership role, we recently purchased a site nearby that is soon to become our permanent new home. Our goal is to continue producing our own intimate and exhilarating work while providing stability to dozens of other artists and performance groups. We are grateful to the following for their lead gifts to the project:

VISIONARIES (\$500K+)

Anonymous
State of New York
Andrew M. Cuomo, Governor
George E. Pataki, Governor
Empire State Development Corporation
Julie Shimer, Chairman
City of New York
Michael R. Bloomberg, Mayor
New York City Council
Christine C. Quinn, Speaker
Margaret Chin, Council Member
James Van Bramer, Council Member
Borough of Manhattan New York
Scott M. Stringer, President
The Lower Manhattan
Development Corporation
Carol Ostrow & Michael Graff
Paul Elston & Frances Beinecke
A.R. & Molly Gurney
The September 11th Fund

ANGELS (\$250K+)

Anonymous
Douglas Liebhafsky & Wendy Gimbel
Sigourney Weaver & Jim Simpson

PRODUCERS (\$50K+)

Lower Manhattan Cultural Council
The Irene Diamond Fund
Dormitory Authority
of the State of New York
Paul T. Williams, Jr., President
Walter Nick Howley
Lower Manhattan Cultural Council
Dennis Mehiel
All The Way Foundation

International Creative
Management, Inc.
Liam Neeson
In Memory of Natasha Richardson
Omnicom
David Richenthal
Kenes Rakishev &
Aselle Tasmagambetova
United Talent Agency
Katherine & Samuel Weinhoff
Stephen & Cathy Weinroth
Davis & Betsy Weinstock

DIRECTORS (\$25K+)

New York State Council on the Arts
Aby Rosen, Chair
Lisa Robb, Executive Director
Jim & Suzy Cameron
Kyle Chepulis
Linda Schupack & David Good
Wendy & David Hashmall
Marilyn & Jeffrey Katzenberg
Kathleen Kennedy & Frank Marshall
Massey Knakal Real Estate
Ed & Patricia Matthews
Gould Family Foundation
David Prittie
Daryl Roth & Jordan Roth
Dan & Sue Rothenberg
Ted Snowdon
The Fran & Ray Stark Foundation
Edward Trach
Basil Walter

ARTISTS (\$10K+)

Roger Berlind
André Bishop &

the Lecomte du Noüy Foundation
 Ellen McCourt
 Andrea & George Miller
 Newman's Own Foundation
 Emma Sheaffer Charitable Trust
 Kent Lawson & Carol Tambor
 Celeste & Tony Tramontin

PATRONS (\$5K+)

Anonymous
 Robert Eimicke & Roslyn Black
 Vivian Bower & Lawrence Shainberg
 Marshall & Nina Brickman
 E.L. & Helen Doctorow
 William H. Draper III &
 Phyllis C. Draper
 Kristin & Gary Friedman
 Jane Gelfman
 Edwin & Lorna Goodman
 The Anrol Foundation
 Mary G. Gurney
 Sylvia G. & Benjamin F. Johnson and
 Sarah East Johnson
 Mark Kaplan
 Edward McKinley
 Susan Sarandon
 Mike Nichols & Diane Sawyer
 George Sheanshang
 Jeanne S. & Herbert J. Siegel
 The Dorothy Strelsin Foundation
 Becky Tesich
 Emily & Lily Wiest

FRIENDS (\$1K+)

Marla Mayer & Chris Ahearn
 Robert & Betsy Barbanell
 Agnes Martin Barley
 Tom & Meredith Brokaw
 Arthur H. Brooks
 David C. Bryan
 Beth Burnam
 Arthur & Linda Carter
 Michael J. Chepiga &
 Pamela Rogers Chepiga
 in honor of Kathy White
 Marya Cohn
 Al & Roma Connable
 Blythe Danner
 Robert L. Denton
 Arlene Donovan
 John & Karen Erickson
 Mr. & Mrs. John Galen

Joseph F. Godfrey & Keith Halstead
 James & Toni Goodale
 Sarah C. Goodyear
 Jane Whitney Gruson
 Christopher Bumcrot & Evelyn R. Gurney
 Lynne Halliday & B.H. Barry
 Robert & Marilyn Harbage
 Patrick Herold
 Fenita Bilgoraj Heyman
 Cindy & Alan Horn
 Emily F. Johnson
 Marsha Berkowitz & Wayne Kabak
 Marianne & David Kaplan
 Jerome B. Kauff
 Stephen & Marina P. Kaufman
 Louise Lamphere
 in honor of Basil Walter
 Claire & David Lane
 Harry Moses & Randy Lehrer
 Jerry Levine & Nina Tassler
 Paige & Nicky L'Hommedieu
 Kate H. Marber
 Israela Margalit
 Julian Mazor
 Michael Miller
 Robert & Evelyn Miller
 Susan Monserud & Ric Sonder
 Bernard W. Nussbaum
 Pakula Productions, Inc.
 Gilbert Parker
 David B. Pearce, M.D.
 Mary Ann & Bruno A. Quinson
 Holland Taylor
 Deborah Schneider & Jim Tilley
 The Shana Alexander
 Charitable Foundation
 Jonathan Sheffer
 Barry Skovgaard & Marc Wolinsky
 Bernadette Speach &
 Jeffrey Schanzer
 Scott & Dhuane Stephens
 Michael & Marjorie Stern
 Bruce Sunstein
 David & Deborah Trainer
 Victoria G. Traube
 Ginny & Bob Walther
 Emmeline Wexer
 Marguerite C. Whitney
 Rachael Worby
 F.A. Zunino
List as of 8/22/13

We apologize if you have been left off this list.

Please contact Alek Deva at alekd@theflea.org for any corrections.

For more information on our Capital Project, please contact Carol Ostrow, (212) 226-0051 x104



THE FLEA I.P.'S

In June of 2009 The Flea launched a unique patron program called The Flea IPs - an elite and dedicated group that helps to make the dreams of The Flea a reality. Flea IPs gain insider access through exclusive events including private talk-backs, intimate artist dinners, master classes and first-look readings. Flea IPs commit their support for three full years, generously pledging \$5,000 each year.



Interested? We'd love to make you a Flea IP too!

Please contact Carol Ostrow at 212.226.0051 x104 or carolo@theflea.org for more information.

The Flea proudly salutes our Flea I.P. members and thanks them for their unwavering support:

Catherine Adler
Trey Beck
John & Gaily Beinecke
Lois Chiles
Larry Condon
Jonathan Reynolds & Heidi Ettinger
Douglas Liebafsky & Wendy Gimbel
Lorna B. & Edwin A. Goodman
Carol Ostrow & Michael Graff
Celeste Guth
Wendy Hashmall
Lorie & Nick Howley
Ellen M. Iseman
Eleanora & Michael Kennedy
Sahra Lese
Larry Kanter & Shelly J London
Andrea & George Miller
Elizabeth Olofson
Stephen & Livia Russell
Jeremy T. Smith
Nanhya C. Santana & Hume Steyer
Tony & Celeste Tramontin
Katherine & Sam Weinhoff
Stephen & Cathy Weinroth

FOUNDATIONS, CORPORATIONS, GOVERNMENT & INDIVIDUAL SUPPORT

\$50,000+

The National Endowment for the Arts
The Poses Family Foundation

David Good & Linda Schupack
The Dorothy Strelsin Foundation

\$25,000 - \$49,999

Catherine Adler
Bloomberg Philanthropies
JPMorgan Chase Foundation
New York City Department of
Cultural Affairs
Warburg Pincus

\$1,000 - \$2,499

Anonymous
Gay & Harry Abrams
Abrams Artists Agency
Claudia Baez
The Barbara Bell Cumming Foundation
Nancy & Alan Brenner
Beth Burnam
Jonathan & Margot Davis
Dramatists Guild Fund
Elizabeth B. Elston
The Friars Foundation
Thomas & Darlene Fridstein
Jane R. Gelfman
Mark & Madeline Lebwohl
The Mary Duke Biddle Foundation
Shelly & Neil Mitchell
William Plapinger & Cassie Murray
The New York Stock Exchange Foundation
Nick & Julie Sakellariadis
Robert Santos & Linda Carlson
Harry Stout
Cynthia King Vance & Lee Vance

\$10,000 - \$24,999

Anonymous
Douglas Liebhafsky & Wendy Gimbel
The Prospect Hill Foundation
Dan & Sue Rothenberg
The Fan Fox &
Leslie R. Samuels Foundation
The Shubert Foundation
Nanahya C. Santana & Hume Steyer
Katherine & Samuel Weinhoff
Stephen & Cathy Weinroth
The Edward & Sally Van Lier Fund
of the New York Community Trust

\$5,000 - \$9,999

Trey Beck
Larry Condon
Paul J. Elston & Frances Beinecke
The Ettinger Foundation
Edwin & Lorna Goodman
Wendy & David Hashmall
Lorie & Nick Howley
Ellen M. Iseman
in honor of Helen Frankenthaler
Larry Kanter & Shelly J. London
The Lucille Lortel Foundation
Andrea & George Miller
The New York State Council on the Arts
Celeste & Tony Tramontin

\$500+

Anonymous
Marita & Michael Altman
Lynn & Mark Angelson
Virginia Arcari
Suzanne Bales
Robert & Betsy Barbanell
Jacqueline Brody
George & Jane Bunn
Ellen Davis
Jean Fitzgerald
Christopher Flinn & Daniela Del Boca
Fred & Susan Foster
Bobby & Vicki Freeman
Andrew Frey
Steven & Donna Gartner
Mia Goldman & Michael Rotblatt
Geoffrey & Sarah Gund
Robbi D. Holman
Lise Jeantet
Mr. & Mrs. Bernard Kamine
Carol Kaplan
John Kilgore
Jame Willkomm & Marc Lesnick
Gregory Long
LuEsther T. Mertz Advised Fund

\$2,500 - \$4,999

The Angelson Family Fund
The Axe-Houghton Foundation
James Cameron
Richard & Jennie DeScherer
Robert Eimicke & Roslyn Black
The John Golden Fund
The Walter & Elise Haas Fund
Stephen & Kristina Lang
The Frederick Loewe Foundation
Fred & Nancy Poses

Murray A. Luftglass
 Caroline McCandless
 Sherry McCutcheon
 Jane Read Martin & Douglas McGrath
 Stephen McNabb
 Payne Middleton
 Elaine Montgomery
 Laurence Hazell & Mimi Quillin
 Mitchell Rabinowitz & Roberta Weiss
 Steven Rand
 Benjamin & Alice Reiter
 Saluggi's

Eric Seiler & Darcy Bradbury
 Gretchen Shugart
 South's Bar & Restaurant
 Charbel & Aida Tagher
 Elizabeth Duggal Taghipour
 Stephanie Garry & Art Tatge
 Edward Trach
 Mary & Jerome Vascellaro
 Emmeline Wexer
 Ellen Freudenheim & Daniel Wiener
 Dan & Cammy Zamlong
List as of 8/22/13



We apologize if you have been left off this list.
 Please contact Alek Deva at alekd@theflea.org for any corrections.

FLEA MEMBERS

\$250 Donors

Anonymous (1)
 Richard & Susan Baldwin
 Catherine Cahill & William Bernhard
 Ronni J. Casty
 Linda & Tom Cauchois
 Frank & Helga Doyle
 Margaret Einhorn & Machel Lasky
 Sara & Fred Epstein
 Alice Ericsson
 John & Deborah Evangelakos
 Wendy Federman
 Richard V. Girodano & Khairul E. Astwood
 Mrs. James B. Gubelman
 Bob Honsinger
 The Jacoby Family
 Wayne S. Kabak
 Virgie & Walter Klein
 Pat & Nathan Kornfeld
 Judith Krupp
 Kenneth D. Levien
 Alison Mandelker-Burnett
 David & Sheila Manischewitz
 Barbara & Alan Marks
 Peg McGetrick
 Seth J. Meyer & Nathaniel V. Speer
 Carl Moellenberg
 Judy Myers & Ira Schwartz
 Douglas, Nancy, & Molly Ostrow
 Kent Cole & Diana Prechter
 Missie Rennie
 Lisa Roumell & Mark Rosenthal
 Ellen & Norman Roth
 Laurie Sackler
 Barbara J Smith & Lance Goberman
 Robert Stein
 Julie & Jim Tynion
 Chris Vroom
 Susan Wilen
 Melissa Wohlgemuth

\$100 Contributors

Anonymous (5)
 Edward Albee
 Joseph Allen
 Marilyn Armel
 Peter & Susan Axelrod
 Gerry Bamman
 Doug & Sarah Banker
 Judy & Ennius Bergsma
 Barbara & Gary Bloom
 John J. Bolebruch
 Sarah Bond
 Lesley Broder
 JuLondre Karlveon Brown
 David Budinger
 Jean Bundy
 Jane & George Bunn
 Christopher Cayaba
 Susan & Jeffrey Chase
 Mr. & Mrs. Coleman Conkling
 Douglas Cramer
 David Dallon
 Bonnie Milligan
 Laurie DeGrazia
 Bunny Dell
 Judy & Ira Dembrow
 Sue B. Dorn
 M. Burton Drexler
 Laurel Elliot
 Star Eonnet
 Clarice Feinman
 George Fleming
 Ken & Kay Folks
 Charles A. Forma
 James Fraser & Katherine Hanson
 Stephen Friedman
 Henry Frommer & Cheryl Tuttle
 Jack Gangi
 Barbara & Mark Gerson
 Betty & Joshua Goldberg

Randi Goldmann & Marty Forman
 Jason Goldstein
 Mary & Gordon Gould
 Emily C. Graff
 Bonnie Graff
 Anabel Graff
 Meaghan Gragg
 Sean Graney
 Jean Gross
 Kathleen A. Halvey
 Marc Happel
 Ryan Hart
 Anne & Gordon Herral
 Blake & Catherine Holden
 Jim & Gale Jacobsohn
 Ashley Jacobson
 Katherine Janca
 Sarah East Johnson
 Gene Kilik
 Ralph Kleinman
 Susan Klock
 Dan Kohn
 Wendie & Bud Kroll
 Susan Lagomarsino
 Billy Lazarus
 Ann Leary
 Jane Huey-Chai Lin
 Mark & Susan Lippitt
 Carla Lord
 Murray Luftglass
 Robert David Norman & Kate H. Marber
 Tom Marvel
 Stephen & Carolyn McCandless
 Loretta McCarthy
 Nello & Mary McDaniel
 John McDermott
 Andrew & Su-Ellyn McMaster
 Judith & Richard Merbaum
 Judith Milhous
 Harriet Millan
 Thomas Molner
 Elaine Montgomery
 Daria & David Moore
 Seth Moskowitz
 Eve Mykytyn
 Drs. Benjamin Natelson & Gudrun Lange
 Peter Chance
 Nelle Nugent
 Deborah O'Brien
 David & Siobhan Olson
 Harriet & Gregg Orley
 Roberto F. Ortiz
 Frances Pandolfi
 Judy & Gary Pasquinelli
 Christopher Patsiga
 Dr. Susan R. Peterson
 Miriam Poser
 Elizabeth Propp

Sarah H. Reines
 Richard & Mary Ronan
 Todd & Lori Rosen
 James Rothman
 Peter & Lee Scott
 Amy Ralston Seife
 Eleanor Shakin
 Kathleen Shannon
 Philip Smith
 Marcia L Smith
 Dainni Spalding
 Preston Stahly
 Alec Stais
 Jeanne & Steven Stellman
 Thomas Synan
 Jay Topkis
 Rahul Tripathi
 Indiana Market & Catering
 Douglas Ver Mulm
 Claire S. Werner
 Edward B. Whitney
 Rita Wolf, Kiran & Anjeli Chapman
 Elaine Yaffe
 Jeremy Zimmer

\$50 Supporters

Anonymous (7)
 Toshi Abe & Nancy Hall
 Joseph Ackerson
 Jeanette & Robert Aginian
 Marie & Harold Alexander
 Misty Anderson
 Judith & DeWitt Baker
 Stephanie D'Alton Barrett
 Carolyn Benbow
 Kenneth Brooks Wells & M. Christina Benson
 Margaret Berkes
 Elinor & Robert Berlin
 Nadia Bernstein
 Helena & Peter Bienstock
 Linda Blacken
 Judith & Alexander Blanton
 Jay & Dena Bock
 Christine Boeke
 Anna Bogyay
 Peter Brew
 Leslie Susan Brittingham
 Sheldon & Carolyn Bross
 Joan Budish
 Bridget K. Burke
 Carol & Allan Carlton
 Steven Charen
 Elizabeth Cho & Lucas Dixon
 Tom Costello
 John & Ann Costello
 Karen Crawford
 Susan Crowe
 Marina Cruz

Leslie Danoff
 Kim Davies
 Emma Davis
 Alek Deva
 Mickey Diener & Lisa Bennett
 Charles Dische
 Martin Domb
 Josh & Kerry Dorf
 Diane & Barry Eisenstat
 Judith Ferber
 Annette Ferstenberg
 M. K. Fischer
 Paul Michael Fontana
 Joyce Friedland
 Elizabeth Garnsey
 Walter Gilbert
 Marlowe Holden
 Alan & Susan Guma
 Jon Haber & Bonnie Levin
 Elizabeth Littlefield
 Robert & Jodi Harrison
 Walton Deva & Laurie Fendell
 Anne Herman
 Beverly Hodgson
 James Hoffman
 Donna Hogben
 John Holden
 Nina Horowitz
 Lily Hou
 Allen Hubby
 Alasdair Hunter
 Stuart N. Hutchison
 K.C. Hyland
 Linda Kahn
 Benjamin Kamine
 Andrea Kaplan

Kaori Kitao
 Mia Leo & Dick Kuczkowski
 Rosanne Kumins
 Melissa & Peter Lacijan
 Ed & Marilyn Levin
 Warren Liebold
 Elizabeth Littlefield
 Dayna Lucas
 Melanie Matthews
 Jeanne Miller
 Audrey Moore
 Kirill Onishchenko
 William Pike
 Ron & Claire Radice
 wayne ransier, sharon tomaselli
 Bill & Chris Reynolds
 Lillian Roth
 Milton B. Rubin
 Sherry Schwartz
 Josie Sentner
 Anindita Sinha
 Dorothy Slater-Brown
 Sarah Jane Smedley
 Fran Smyth
 Dominic Spillane
 Gena Stein
 Clarke, Peggy & Claire Utermohle
 Catherine Versegi
 Judith & Robert Waldman
 Alan Watkins
 Barbara & Alex Waugh
 JoAnn Weisel
 Kelly Wines & Scott Freishtat
 John Moon & Abby Winship

List as of 9/23/13

UP NEXT @ THE FLEA

A satire about love and growing up and "being real".

MARY-KATE OLSEN IS IN LOVE

by MALLERY AVIDON directed by KRISTAN SEEMEL

WORLD PREMIERE / NOVEMBER 1 - DECEMBER 8

TICKETS ON SALE NOW!



FLEA REWARDS

Use your Flea Member Card or ticket stub to take advantage of these special offers from our downtown partners.

Macao Trading Co (311 Church St.)

917-848-0117 / macaonyc.com
Portuguese-Asian Fusion Restaurant
Make a reservation to receive a complimentary pitcher of Sangria.

Pane Pannelle (305 Church St.)

212-219-4037 / panepannelle.com
Italian Tapas Restaurant
Get 10% off your bill with entree purchase

Bread TriBeCa (301 Church St.)

212-334-0200 / breadtribeca.com
Modern Italian Restaurant
Get 10% off your bill with entree purchase

Petrarca (34 White St.)

212-625-2800 / petrarcatribeca.com
Italian Restaurant & Wine Bar
Receive a 10% discount on your bill

Da Mikele (275 Church St.)

212-925-8800 / damikele.com
Neapolitan-Inspired Italian Restaurant
Receive a 10% discount on the bill

Souths (273 Church St.)

212-219-0640 / southsnyc.com
Neighborhood Bar and Restaurant
A complimentary glass of wine with the order of an entrée

Billy's Bakery (75 Franklin St.)

212-647-9958 / billysbakerynyc.com
Deserts and Other Baked Goodies
Buy one cupcake & get the second 1/2 off

Bubble Lounge (228 West Bway)

212-431-3433 / bubblelounge.com
Champagne Bar
Buy 1 drink & get 1 free or get 20% off a bottle of champagne

Sweet Lily Spa (222 West Bway)

212-925-5441 / www.sweetlilyspa.com
Nail Spa and Boutique
10% off of Sweet Lily manicures

Maslow 6 Wine Shop (211 West Bway)

212-226-3127 / www.maslow6.com
Wine Shop
Receive 10% off the price of wine

Dance New Amsterdam (280 Broadway)

212-625-8369 / www.dnadance.org
Progressive Dance Education
Take 10% off classes and workshops

Churrascaria (221 West Bway)

212-925-6969 / churrascariatribeca.com
Brazilian Steakhouse
Receive 10% off your meal

Cercle Rouge (241 West Bway)

212-226-6252 / cerclerougeresto.com
French Bistro
Receive 10% off bill on a pre-show dinner before 7pm

HERE Arts Center (145 Sixth Ave.)

212-647-0202 / www.here.org
Theater
No convenience fee for HARP productions

TriBeCa Grill (375 Greenwich St.)

212-941-3900 / myriadrestaurantgroup.com
American Grill
Enjoy a complimentary sommelier's choice glass of wine with dinner.

CHECK THEFLEA.ORG OR CALL 212-226-0051 x101 FOR THE LATEST UPDATES & DEALS.

THE FLEA THEATER MEMBERS PROGRAM

Get Special Attention. Support The Flea. Be a Member.

Our theater is tiny and we sell out...fast. Members get guaranteed seats plus exclusive discounts, invites, drinks & inside info! All levels of membership are 100% tax-deductible.

Become a Member

\$25 Member

No booking or convenience fees
VIP ticket processing

\$50+ Supporter

All of the above, plus:
Exclusive discounts & deals to partner businesses
First to know of exciting post or pre-show Flea events
Special thanks in Flea programs

\$100+ Contributor

All of the above, plus:
Reserved seating for you and your guests
Exchange tickets up to 24 hours in advance
One complimentary drink at our bar before every show
Reservations to #serials@theflea any night of performance

\$250+ Donor

All of the above, plus:
Invitations to readings and special Flea events
One complimentary drink at our bar for your entire party

\$500+ Partner

All of the above, plus:
Access to Broadway house seats (purchase necessary)
Dinner reservations at select Flea Partner restaurants
Unlimited complimentary drinks

\$1,000+ Patron

All of the above plus:
Invitation to select Opening Night performances and cast parties

Flea I.P's

Interested? Email carolo@theflea.org for more information!

CALL 212.226.0051 x101, or MAIL/FAX the form below to join!

I WANT TO JOIN THE FLEA! (Please check membership level below)

_____ \$25 Member

_____ \$50 Supporter

_____ \$100 Contributor

_____ \$250 Donor

_____ \$500 Partner

_____ \$1,000 Patron

NAME (as should be listed) _____

ADDRESS _____

CITY, STATE, ZIP _____

EMAIL _____ PHONE _____

CREDIT CARD # _____ EXP. _____ SECURITY CODE _____

Mail this form with a check to THE FLEA MEMBERS PROGRAM, 41 White Street, New York, NY 10013 or fax this form with your credit card information to (212) 965-1808. Questions or concerns? Call us at 212-226-0051 x107.