



THE FLEA THEATER PRESENTS

# FUTURE ANXIETY

BY LAUREL HAINES

DIRECTED BY JIM SIMPSON

FEATURING THE BATS

A WILDLY CONCEIVABLE VISION OF THE APOCALYPSE

APRIL 15 THROUGH MAY 26 @ THE FLEA

41 WHITE STREET TRIBECA 212-352-3101 [WWW.THEFLEA.ORG](http://WWW.THEFLEA.ORG)



# THE FLEA THEATER

**JIM SIMPSON** ARTISTIC DIRECTOR    **CAROL OSTROW** PRODUCING DIRECTOR

**BETH DEMBROW** MANAGING DIRECTOR

PRESENTS THE WORLD PREMIERE OF

# FUTURE ANXIETY

WRITTEN BY **LAUREL HAINES**

DIRECTED BY **JIM SIMPSON**

**KYLE CHEPULIS** SET DESIGN    **BRIAN ALDOUS** LIGHTING DESIGN

**PATRICK METZGER** SOUND DESIGN    **SYDNEY GALLAS** COSTUME DESIGN

**KATE SINCLAIR FOSTER** PROP DESIGN    **MICHELLE KELLEHER** STAGE MANAGER

**NICOLE GREENE** ASSISTANT DIRECTOR    **MIMI QUILLIN** CHOREOGRAPHER

DEVELOPED AT THE LARK PLAY DEVELOPMENT CENTER, NEW YORK CITY

# FUTURE ANXIETY

(IN ALPHABETICAL ORDER)

Ernie.....	Brett Aresco
Shelby.....	Allison Buck
Comrade Li.....	Holly Chou
Karl.....	Ugo Chukwu
Sonia.....	Katherine Folk-Sullivan
Ensemble.....	Grant Harrison
Vince.....	Alex Herrald
Ensemble.....	Josephine Huang
Lorna.....	Amanda Idoko
Malcolm.....	Raúl Sigmund Julia
Ensemble.....	Yvette King
Wesley.....	Vin Kridakorn
Mae.....	Maren Langdon
Nina.....	Betsy Lippitt
Ensemble.....	Seth Moore
Christine.....	Joy Notoma
Jake.....	Reynaldo Piniella
Julius.....	Donaldo Prescod
Tracy.....	Anita Sabherwal
Flo.....	Joann Sacco
Homeless Joe.....	Keola Simpson
The Commander.....	Hansel Tan
Lillian.....	Monica Wyche

## CREATIVE TEAM

Playwright.....	Laurel Haines
Director.....	Jim Simpson
Set Design.....	Kyle Chepulis
Lighting Design.....	Brian Aldous
Sound Design.....	Patrick Metzger
Prop Design.....	Kate Sinclair Foster
Costume Design.....	Sydney Gallas
Choreography.....	Mimi Quillin
Stage Manager.....	Michelle Kelleher
Assistant Stage Manager.....	Theresa Giannetti
Assistant Director.....	Nicole Greene
Assistant Costume Design.....	Christine Hottinger
Photography.....	Richard Termine

## FLEA STAFF

Artistic Director.....	Jim Simpson
Producing Director.....	Carol Ostrow
Managing Director.....	Beth Dembrow
Technical Director.....	Liz Blessing
Development Manager.....	Penn Genthner
Marketing & Membership Manager.....	Dane Joseph
Assistant to the Producing Director.....	Sarah Wansley
Assistant Technical Director.....	Kyle Crose
Graphic Designer.....	David Prittie
Theater, Technical & Production Consultant.....	Kyle Chepulis
Accountants.....	Joel Faden & Company, Inc.
Attorney.....	Paul, Weiss, Rifkind, Wharton & Garrison LP/Carol Kaplan
Development Consultant.....	Rachel Colbert
Press Representative.....	Ron Lasko/Spin Cycle

Special Thanks **Office Max, Technical Artistry, ThinkSo, Tribeca Lighting, Whole Foods, Natural Resources Defense Council, Earth Day Network, Earth Day New York**

# THE CAST



**Brett Aresco** (Ernie) is very excited to tackle another timely project at The Flea. He was recently involved with Stephen Banks' *Looking at Christmas* (Dir. Jim Simpson) and the long-running late night *#serials@theflea*. Previous Flea productions include *Girls in Trouble* (Dir. Jim Simpson) and *The Great Recession* (Dirs. Kip Fagan, Adam Rapp). Other credits include *La Boheme (Spoken)* (The Cell; dir. Jeremy Bloom) & *The Member of the Wedding* (Westport Country Playhouse; dir. Joanne Woodward). B.A. Duke University, 2009.



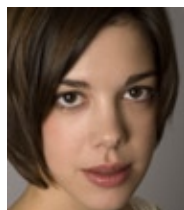
**Allison Buck** (Shelby) is delighted to be in her second show as a Bat! She first appeared at The Flea as Charmian in *Looking at Christmas* this past December. Other favorite roles include: Rosalind in *As You Like It*, Wilhelmina Murray in *The Passion of Dracula*, and The Woolly Mammoth in *The Skin of Our Teeth*. Allison holds a B.A. in Theatre Arts from Cornell University.



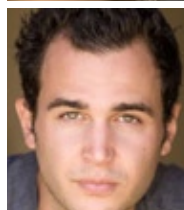
**Holly Chou** (Comrade Li) has been with The Flea for three seasons. Previous shows as a Bat include *Cato*, *The Great Recession*, *Office Hours*, & *Looking at Christmas*. Other credits include shows with Superwolf, Jeremy Bloom (New York), Sleepwalkers Theater, Woman's Will (San Francisco), & Four Larks (Melbourne). She has appeared in new works by A.R. Gurney, Steven Banks, Thomas Bradshaw, Mac Wellman & Bekah Brunstetter.



**Ugo Chukwu** (Karl) is excited & honored to be surrounded by such a talented group of young artists here at The Flea. NYC credits: *King Lear* (Teatro Latea), *Take Me Out* (The Heights Players), *The Green Man* (2010 Frigid Festival), *A Midsummer Night's Dream* (Roosevelt Island Theater). Regional credits: *The Tempest* and *The Cherry Orchard* (Bakerloo Theater Company). Training: B.F.A. (with honors) in acting from Brooklyn College.



**Katherine Folk-Sullivan** (Sonia) has appeared at The Flea in *Office Hours* by A.R. Gurney & *The Great Recession (Unum)* by Will Eno. Last spring she understudied for *Parents' Evening* by Bathsheba Doran. During her time as a Bat, Katherine has been fortunate to work with Len Jenkin, Mac Wellman, Jeremy Bloom & Chad Beckim. She is an avid participant in *#serials@theflea*. Later this season, she will also be appearing in the world premiere of *Just Cause* by Zack Russell. A Philadelphia native, Katherine has a B.A. in Cultural Studies from McGill Univ.

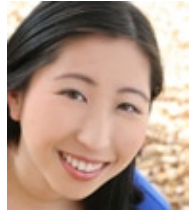


**Grant Harrison** (Ensemble) recently graduated from UCLA, where he studied acting. After graduation in June 2010, he came to New York where he re-confirmed his interests in ping-pong, baseball & finely aged ginger ale.



**Alex Herral** (Vince) Theater credits: *#serials@theflea*, *Insurmountable Simplicities* (NY Fringe), *Decadent Acts* (Planet Connections Festivity), *Buddy Holly at the Armory* (Prospect Theatre Co.), *The House of Blue Leaves* (Gallery Players), *Galileo* (Urban Stages w/Milk Can Theatre Co.), *The Tender Trap* (Retro Prod.), *The Meaning of Life...* (Rope Swing Ent.), *The Reckoning of Kit & Little Boots* (Gallery Players & Engine 37, NYIT award-winner); *Dinner with Ahmed* (American Theatre of Actors); *Romeo & Juliet* (Drilling CompaNY). Film credits include *Hypno* (w/James Franco), *The Conservatory* (2008 College Emmy), *Rooth & B*, *Paperclip & Currents*.

**Josephine Huang** (Ensemble) is an actor, singer, and musician. Last seen at The Flea in *The Great Recession* (*Unum* by Will Eno, *Recess* by Sheila Callaghan), as well as writing/performing in *#serials@theflea*. Past work: Celia in *Passion in the Park* (Aporia Theater), Cybil in *The Altruists* (DTM Prod.), & Nurse in *Sunday in the Park With George*. Film/TV: *Sesame Street*, *Three* (NYU). Training: Stella Adler Studio, B.F.A. Acting (Univ. of Florida). Much love to my ever supportive friends & family. [www.jhuangnyc.com](http://www.jhuangnyc.com)



**Amanda Idoko** (Lorna) was last seen at The Flea in *#serials@theflea*. Other NYC credits: *Punching Glass* (Sam; winner Best Actress in the 2011 Strawberry One Act Festival); *King Lear* (Regan) at Teatro LATEA; *Romeo & Juliet* w/The Drilling Company. Regional credits: *Servant of Two Masters* (Beatrice), *The Body Project* (Nia), *God's Ear* (Lenora), *As You Like It* (Celia) & *Alice in Wonderland* (Alice). Amanda is also an emerging playwright & has had her work produced at The Manhattan Repertory Theater & The Hudson Guild Theater. Education: Cornell.



**Raul Sigmund Julia** (Malcolm) Previous productions at The Flea: *The Great Recession*, *Girls In Trouble* (u/s), *Office Hours*, *Looking At Christmas* & *#serials@theflea*.



**Yvette King** (Ensemble) NY credits: *The Man With American Skin* (by Bat Seth Moore); *#serials@theflea*; Words in Beckett's *Words & Music* & Bernarda in *The House of Bernarda Alba* (Full Circle Arts Collective); *Does Anyone Know Sarah Paisner* at The Gene Frankel Theater; *SonofabitchStew & The Asshole Differential* by Moira Cutler (Wow Cafe Theater/Dixon Place); *The N Word & You will remember me* (Afrikan Women's Repertory); and *Who's Got Game* (The Riant Theater).



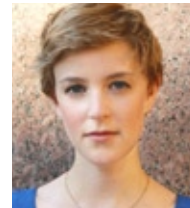
**Vin Kridakorn** (Wesley) makes his debut at The Flea, and is thrilled to be a part of this production. New York credits: *#serials@theflea*, *Hamlet* (Gallery Players), *Taming of the Shrew* (Queens Players), *Walkabout Yeolha* (North American Premiere, Riverside Theater), *Tape* (Dance New Amsterdam), *Spoon River Anthology* (Roy Arias Theater), *Tea for Father* (Premiere, The Tank). Film: "Play Name" (Seattle Int'l Film Fest, New Fest) MFA: The Actors Studio. [www.vin-kridakorn.net](http://www.vin-kridakorn.net)



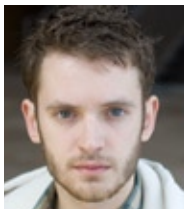
**Maren Langdon** (Mae) Recent theater work includes Itamar Moses' *Love/Stories* (or *But You Will Get Used To It*), A.R. Gurney's *Office Hours*, *#serials@theflea*, *The Great Recession*, and *Girls in Trouble*, all at The Flea. Maren is a graduate of Skidmore College.



**Betsy Lippitt** (Nina) has appeared at The Flea in the world premieres of *Looking at Christmas*, *Office Hours*, *Girls in Trouble*, and *The Great Recession* (*Unum*). Other recent credits: *Blue Bearded Lover* (Symphony Space's Selected Shorts on NPR), *The Einstein Project* (Berkshire Theatre Festival) & *Jane Eyre* (Jane). B.F.A.: NYU Tisch/Stella Adler. [www.betsy-lippitt.com](http://www.betsy-lippitt.com)



# THE CAST



**Seth Moore** (Ensemble) is an actor, playwright, artist and musician. He received his B.F.A. in performance from U. of Michigan & is thrilled to be working at The Flea. Credits include: *American Sexy* (The Flea) & Naylor in *Rat in the Skull* (Wallfly Theater), Pinky in *Our Lady of 121st Street* (U of M), Warren in *This is Our Youth* (Basement Arts) & Goyi in *Madmen & Specialists* (U of M). He is also the co-founder of “Prophet in your Pocket”, a group that creates poetry-based pieces.



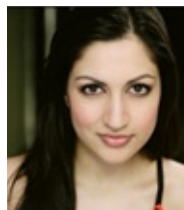
**Joy Notoma** (Christine) was last seen in *#serials@theflea*. Her favorite roles include Viola (*Twelfth Night*) & Phebe (*The Darker Face of the Earth*). Joy made her NY debut in *In Conflict*, a piece about Iraq War veterans that was produced by the Culture Project & received a Fringe First Award at the Edinburgh International Fringe Festival. Joy is proud to be a member of the talented Bats and is honored to have a theatrical “home.”



**Reynaldo Piniella** (Jake) was previously seen at The Flea in *#serials@theflea* & *The Great Recession*. Credits: *Mr. Hirsch Died Yesterday*, *Hamletmachine* (Castillo Theatre), *Romeo & Juliet* (Wings Theatre), *Oedipus Rex* (Faux Real Theatre Co.), *The Etymology of Bird* (CityParks Summerstage), *All's Well on a Midsummer's...* (Hudson Shakespeare), *The Toilet* (New Federal), *Stuck* (SUPERWOLF). Films & commercials: BET, Nintendo, New York Magazine, Pearson Education, FUSE TV, Discovery Channel, Biography Channel & Def Jam. [www.reynaldopiniella.com](http://www.reynaldopiniella.com)



**Donald Prescod** (Julius) has appeared in productions of *Angels in America*, *Orestes 2.0*, *Burn This*, *Richard III*, Tony Kushner's *The Illusion*, and an original production of *Patrick's Story* by acclaimed writer Kyle Bradstreet. This marks his first main stage production with The Flea Theater. Thanks Jim!



**Anita Sabherwal** (Tracy) is thrilled to be in the premiere of *Future Anxiety*. Theater: *#serials@theflea*, *BritBits* (Mind the Gap Theatre), *East Village Chronicles* (Metropolitan Playhouse), *Seven Eleven* (Desipina); Film/TV: *Motherland* (premiering @ IFC Cinema on April 25th), *One Life to Live* (ABC), *Cyberchase* (PBS); Internet: *Head in the Oven* - Episode 2 (UCB), *Wallstrip -Wipro*; Episode Hosting: MTV *Iggy* (Pilot), green carpet celeb interviews @ *The High Times Magazine Awards*. Training: AADA & LAMDA.



**Joann Sacco** (Flo) most recently performed in *#serials@theflea* & in Adirondack Shakespeare's Bookend Project of *Titus Andronicus* and *The Tempest*. She has also worked at the American Shakespeare Center, The Drilling Company, and ShakespeareNYC. She studies acting with Steve Perlmutter, and is a Resident Actor at the Shakespeare Forum.



**Keola Simpson** (Homeless Joe) wore a ridiculous toupee in *The Great Recession*; sang horrific lyrics at 1AM while recklessly flapping around a stuffed bird in *#serials@theflea*; went on one time while understudying the perfectly named role of “Man” in *Parents' Evening*; used a less-than-consistent accent while playing Wyatt Earp in the workshop for *A Letter From Omdurman*. All of this for The Flea Theater. Keola studied acting at Fullerton College & directing at California State Univ., Fullerton. Both schools ask him for money. His diploma is scotch-taped to his Mom's refrigerator in Hawaii. Go surfing. Aloha.

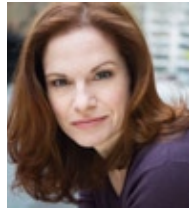
**Hansel Tan** (The Commander) Off Broadway: *The Ohmies* (Carlin), NYC: *#serials@theflea*, *Paper Angels* (Lum), *The Lewis Carroll Project* (The White Rabbit), *Line* (Dolan), Regional: *Big Love* (Bella), *Bat Boy* (Bat Boy), *We Can't Reach You*, Hartford (Merle Evans), *No Eggshells Outside* (Cocker), *Ex/Agora* (Goddess), *Sidney Trefusis* (Smashed!), International: *tick... tick.. BOOM!* (Jon), *The Tempest* (Caliban), *Into The Woods* (Wolf), *Full Tank* (Sergeant Leroy), *Happy Endings: ABV3* (Samuel/Kuang Ming), *Homesick* (Patrick Koh), *Never The Sinner* (Nathan Leopold).

www.HanselTan.com



**Monica Wyche** (Lillian) received her M.F.A. in Acting from the U. of South Carolina. In NYC, she has worked with Prospect Theatre, terraNOVA, id Theatre Co., New Dramatists & Manhattan Rep, among others. Regional credits: *Agnes in Bug*, *Nancy in Frozen* (Trustus Theatre), Merteuil in *Les Liaisons Dangereuses* (Workshop Theatre, SC) & work with the Aquila Theatre Co. & Milwaukee Rep. This summer, she will appear in *H. apocalypsus* with at the Piccolo Spoleto Festival. TV: *Army Wives*.

www.monicawyche.com



## THE CREATIVE TEAM

**Laurel Haines** (Playwright) writes plays and musicals. Her play *The Dianalogues*, about the public's obsession with Princess Diana, has been produced in the U.S., Canada, Great Britain, and South Africa, and is published in *Women Playwrights: The Best Plays of 2003* (Smith and Kraus) and *Best Women's Monologues for the Millennium* (Applause Books). *Future Anxiety*, a dystopian comedy she wrote after thinking too much about plastic bags, was developed in the Lark Playwrights Week 2009, had staged readings at Chicago Dramatists, the Great Plains Theatre Conference, and Stage Left Theater, and was a finalist for the National New Play Network's Smith Prize. She has written book and lyrics for musicals including *Stones of Wisdom*, a puppet musical for young people commissioned by First Stage Children's Theater in Milwaukee, WI, and *Beach Wars*, co-authored by Nan Hoffman and Howard Pfeifer and presented at the Stages Festival 2006 in Chicago. Other plays include *Gun in the Funnies* (staged reading in Kitchen Dog Theatre's New Works Festival 2009), *Raw Footage* (Arizoni Award, Best Original Script 2000), and *Potatoes and Radio City* (Collaboraction Sketchbook 2004 and 2005). Laurel has a B.A. in Anthropology from Brown University and an M.F.A. from ASU, where she studied with Guillermo Reyes. She recently moved back to New York after many years in Arizona and Chicago. Laurel is a member of the Dramatists Guild.

**Jim Simpson** (Director) is the Founder and Artistic Director of The Flea Theater (2004 Drama Desk cited for Downtown Adventurous Theater). Two-time OBIE-award winner, 2002 National Board of Review Excellence in Filmmaking, and cited for artistic leadership in Downtown New York by the Lower Manhattan Cultural Council in 2002. Jim has directed over 70 works for the theater and has also directed for film and television. Venues include nine seasons at the Williamstown Theater Festival, Alley Theater, Hartford Stage, Yale Rep, Actor's Theater of Louisville, Eisenhower Theater at the Kennedy Center, Lincoln Center, Playwrights Horizons, EST, CSC, MCC, the London International Theater Festival and the Melbourne Fringe Festival. Jim was a child actor in his hometown of Honolulu, as a teenager worked with Jerzy Grotowski in Poland, and holds degrees from Boston University School for the Arts and the Yale Drama School. Most recently, Jim directed A. R. Gurney's *Crazy Mary* at Playwrights Horizons, Will Eno's *Oh, The Humanity...*, the revival of Peter Handke's *Offending The Audience*, Addison's *CATO*, Thomas Bradshaw's *Dawn*, Gurney's *A Light Lunch* and *Office Hours*, Will Eno's *UNUM* as part of The Flea's *The Great Recession*, Jonathan Reynolds' *Girls in Trouble*, Bathsheba Doran's *Parents' Evening*, and Steven Banks' *Looking at Christmas*.

**Kyle Chepulis** (Set Design), a Flea Theater co-founder, has worked with Jim Simpson on many theatrical productions as well as helping to design and build the theater. Kyle has worked as a set and lighting designer on a multitude of theatrical productions and worldwide events, most recently Mac Wellman's *1965UU* at The Chocolate Factory and his upcoming *3 2's*, or *AFAR* at Dixon Place. He has received an EDDie, Obie and Bessie awards for his design work. His company, Technical Artistry, provides lighting design and technical consultation to museums, exhibitions, galleries and the arts.

# THE CREATIVE TEAM

**Brian Aldous** (Lighting Design) has worked at the Flea since its founding. Among the shows he's lit here are *Mrs. Farnsworth*, *Post Mortem*, *Ashley Montana...*, *The Oldsmobiles* and *The Parent's Evening*. Other New York companies he has worked for include Cucaracha, EnGarde Arts, Circle Repertory, Jean Cocteau Repertory, the Hudson Guild and Manhattan Ensemble, all mostly gone, as well as Playwrights Horizons, MCC, Signature, DTW, Soho Rep, NYTW, Tada!, Primary Stages, Symphony Space and Triskelion Arts, all mostly still around. He also lit a show almost old enough to drink: the still running Blue Man Group Tubes.

**Patrick Metzger** (Sound Design) is a sound designer & composer. He has designed sound for *Trixie and Monkey: All or Nothing* (Ars Nova), *Dreamers of the Day* (Roy Arias Theater Complex), and *Billy Carver and the Children in Mind* (Manhattan Theatre Source). He was assistant sound designer for *Middletown* (Vineyard Theatre) and *Divine Sister* (Soho Playhouse). His original music has been featured in *Motherhood Out Loud* (Hartford Stage), *Alice Sit By the Fire* (Adaptive Arts at IRT Theater), *The Good Woman of Setzuan* (Adaptive Arts), *Universal Robots*, and *Roar of the Crowd* (both at Manhattan Theatre Source). [www.ilike.com/artist/Patrick+Metzger](http://www.ilike.com/artist/Patrick+Metzger)

**Sydney Gallas** (Costume Design) is a New York based Costume Designer and Theatrical Director. Recent costume designs include: *The Tremendous Tremendous* (The Mad Ones), *The Argument* (The Attic), *#serials@theflea*, *Ivanov* (Columbia University), *Ghost Sonata* (Columbia University), *Map of Virtues* (Williamstown Theatre Festival), *Abraham Lincoln: Vampire Hunter* (Online Book Trailer), *The Tempest* (The New School), *Anemone: Past Tiger* (Playwrights Horizons Theatre School). Assistant credits include: *Deep Throat: The Sex Scandal* (Off-Broadway), *Take Flight* (McCarter Theatre Center), *13 the Musical* (Broadway), *Drowsy Chaperone* (National Tour), *Legally Blonde* (Broadway). Sydney will be returning to Williamstown Theatre Festival this summer as an assistant costume designer. She is an Alumna of NYU's Tisch School of the Arts where she studied at Playwrights Horizons Theatre School and the Technical Production Track. [web.mac.com/sydgallas](http://web.mac.com/sydgallas)

**Nicole Greene** (Assistant Director) is a resident director with The Flea & a professional freelance theater artist working in many areas. Directing: *#serials@theflea*, *Conversations with Eternity* (Stony Brook). Stage Management: *The Lewis Carroll Project* (The Tank), *Edible* (IAP), 4th Arts Block Festival, *Looking at Christmas: film shoot* (The Flea). Design: *Project Brand New* (HERE), *Epona's Labyrinth* (HERE).

**Mimi Quillin** (Choreography) is best known for her work as a dancer and actress on Broadway, Off-Broadway and abroad. Broadway credits begin with *Sweet Charity* starring Debbie Allen. Mimi played a Big Spender girl, and as well as assisted Bob Fosse and Gwen Verdon on the revival's production. While working as his assistant, Fosse named Mimi as the recipient of an acting scholarship to the Lee Strasberg Institute. Off-Broadway she played The General's Mare in Hudson Guild's *The Balcony* by Genet; Cindy, the "queen of the ballbusters" in *Carnal Knowledge* by Jules Feiffer starring Judd Nelson & Jon Crier; and the title role in Nancy Friday's *My Secret Garden* based on her sexy best selling book.

**Kate Sinclair Foster** (Prop Design) is thrilled to be joining The Flea as the Resident Set Designer this season. Favorite past projects include *Office Hours* (Set Design, The Flea) pieces in Target Margin's Theater of Tomorrow and *Unknown Williams Lab* (Directing/Production Design), *Strike Anywhere & ANITYA's Macbeth Variations II* (Set Design), MCC Theatre Youth Company's Freshplay Festival (Set and Costume Design), Clubbed Thumb's Summerworks Festival (Lobby Design), *Lea & The Shipment* (Young Jean Lee's Theatre Company; Assistant Set Design) & Williams College's *Electra*, directed by Sam Gold (Set Design). Kate holds a B.A. in Theater and Art History from Williams College.

**Michelle Kelleher** (Stage Manager) is based out of NYC with credits in both New York and New Orleans. Past shows include *Relativity*, *Lieutenant of Inishmore*, *Doubt* and the premiere run of John Biguenet's *Rising Water* at Southern Rep Theater, New Orleans. More recently she has worked as the Stage Manager on the NY premiere runs of *The Wendigo* (The Vagabond Theatre Ensemble), *Last Life* (at The Brick Theater and Ohio Theater), *Lavaman* (Aztec Economy), *The Prophet of Monto* (Solas Nua), *Wake Up, You're Dead!* (La MaMa E.T.C.) and *A World Apart* (Creation Production Company) as well as *Cold Keener* (Target Margin Theater), *Lack of Breath* (NY Fringe Festival), *Penang* (Boo Art Productions), *Gormanzee and Other Stories* (anna&meredith) and the first national tour of *History of the Word* (Off Broadway Booking). Michelle has also enjoyed several seasons as PSM for The Patchwork Players, a long running local children's theater ensemble in New Orleans now celebrating its twenty-sixth year. She studied at Tulane University where she received her Bachelor's Degree in Theater Production.



# THE FLEA STAFF

**Jim Simpson** (Artistic Director) is the Founder and Artistic Director of The Flea Theater (2004 Drama Desk cited for Downtown Adventurous Theater). Two-time OBIE-award winner, 2002 National Board of Review Excellence in Filmmaking, and cited for artistic leadership in Downtown New York by the Lower Manhattan Cultural Council in 2002. Jim has directed over 70 works for the theater and has also directed for film and television. Venues include nine seasons at the Williamstown Theater Festival, Alley Theater, Hartford Stage, Yale Rep, Actor's Theater of Louisville, Eisenhower Theater at the Kennedy Center, Lincoln Center, Playwrights Horizons, EST, CSC, MCC, the London International Theater Festival and the Melbourne Fringe Festival. Jim was a child actor in his hometown of Honolulu, as a teenager worked with Jerzy Grotowski in Poland, and holds degrees from Boston University School for the Arts and the Yale Drama School. Most recently, Jim directed A. R. Gurney's *Crazy Mary* at Playwrights Horizons, Will Eno's *Oh, The Humanity...*, the revival of Peter Handke's *Offending The Audience*, Addison's *CATO*, Thomas Bradshaw's *Dawn*, Gurney's *A Light Lunch* and *Office Hours*, Will Eno's *UNUM* as part of The Flea's *The Great Recession*, Jonathan Reynolds' *Girls in Trouble*, Bathsheba Doran's *Parents' Evening* & Steven Banks' *Looking at Christmas*.



**Carol Ostrow** (Producing Director) joined Jim Simpson at the helm of The Flea in 2001 & *The Guys* marked her return to Off-Off-Broadway. She was the OBIE-award winning Producing Director of the Classic Stage Company, where she produced *The Merchant of Venice*, directed by Jim Simpson, the world premiere of Ezra Pound's *Elektra*, directed by Carey Perloff as well as the acclaimed 30th anniversary production of Pinter's *The Birthday Party*, among others. She was the founder and original Producing Director of The Powerhouse Theater at Vassar, now in its 24th season. In between, she has also been an adjunct professor of theater at Vassar College, Chatham College and McGill University. For The Flea, Carol has produced A.R. Gurney's *O Jerusalem*, *Mrs. Farnsworth*, *Screen Play*, *Post Mortem*, *A Light Lunch* and *Office Hours*, Elizabeth Swados' *JABU* and the Swados/Erin Courtney collaboration *Kaspar Hauser*, Will Eno's *Oh, The Humanity and other exclamations*, Mac Wellman's *Cellophane* and *Two September*, Roger Rosenblatt's *Ashley Montana Goes Ashore in the Caicos...* and *The Oldsmobiles*, Adam Rapp's *Bingo with The Indians*, Itamar Moses' *Love/Stories (or But You Will Get Used to It)*, Beau Willimon's *Lower Ninth*, Thomas Bradshaw's *Dawn*, Polly Dramer's *Getting Into Heaven*, Len Jenkin's *Like I Say and Margo Veil*, Talking Band's *The Parrot*, the holiday extravaganza *'Twas the Night Before*, short plays by Christopher Durang, among others, the recent Flea commission, *The Great Recession*, an evening of short plays by Thomas Bradshaw, Sheila Callaghan, Erin Courtney, Will Eno, Itamar Moses and Adam Rapp, Jonathan Reynolds' *Girls in Trouble*, Bathsheba Doran's *Parents' Evening*, and Steven Banks' *Looking at Christmas*. She is also behind the numerous dance and music programs presented at The Flea. Carol is a graduate of Vassar College and the Yale Drama School. She is a board member of LAVA, an acrobatic dance collective, serves on the President's Advisory Council of Vassar College and the Board of Advisors of the Yale Drama School, and is one of the newest trustees to one of the oldest congregations in New York City, Central Synagogue. Married and the mother of four incredible young adults, she and her family count Pittsburgh, London, Montreal and now New York City once again as home.



**Beth Dembrow** (Managing Director) has been with The Flea since 2007, working on *Los Angeles* by Julian Sheppard, *Oh, The Humanity and other exclamations* by Will Eno, *Lower Ninth* by Beau Willimon, *Kaspar Hauser* by Liz Swados & Erin Courtney, *Love/Stories (or But You Will Get Used to It)* by Itamar Moses, *The Great Recession*, an evening of short plays by Thomas Bradshaw, Sheila Callaghan, Erin Courtney, Will Eno, Itamar Moses and Adam Rapp, *Girls in Trouble* by Jonathan Reynolds, *Parents' Evening* by Bathsheba Doran, and all other mainstage and downstairs productions. Prior to her arrival, she spent two and half years at Lincoln Center Theater where she worked on all mainstage and second stage productions, including the Tony-Award winning productions, *The Light in the Piazza* and Tom Stoppard's *The Coast of Utopia*. Other management experiences with Snug Harbor Productions (Steven Chaikelson and Brannon Wiles) include: *Elaine Stritch at Liberty* (Broadway); *Harlem Song*, Salman Rushdie's *Midnight's Children* (Apollo Theater); *They Wrote That?*; *Private Jokes*, *Public Places*; *The Tricky Part*; *Our Fathers and Dudu Fisher's Something Old, Something New* (Off and Off-off Broadway). Beth holds a B.A. from Cornell University and an M.F.A. in Theater Management and Producing from Columbia University.



# THE FLEA STAFF



**Liz Blessing** (Technical Director) Liz is happy to have found a home at The Flea Theater. Before coming to the Flea she was the Draftsperson for I. Weiss, creating construction drawings for rigging system installation on Broadway and beyond. Previous to that she was an Engineering Assistant for City Theatrical, Inc, where she helped test the W-DMX system. Liz has a B.S. from The College of William and Mary.



**Penn Genthner** (Development Manager) joined the staff of The Flea Theater after over five years at the Pasadena Playhouse in Southern California, where he held the titles of Grants Manager, Tour Coordinator, and Archivist. In these various roles, he helped the company secure major state and institutional funding and deepen public knowledge about its rich and under-celebrated history. As the Playhouse's historian, Penn was frequently invited to speak about theater history for various clubs and community organizations, including serving as a guest lecturer at Occidental College. He has worked around the country as

Development Consultant to the LA-based Furious Theatre Company and Nom de Guerre Theatre Guild, as well as at Minnesota's Guthrie Theatre and the Park Playhouse in Columbus, OH. He has served on the Board of Directors of the Pasadena Playhouse Alumni & Associates and the New York non-profit Caring Cameras. He graduated from Bennington College in 2001 with a B.A. in Theatre.



**Dane Joseph** (Marketing & Membership Manager) Dane is extremely excited to be joining The Flea after recently completing his master's in Arts Administration at Columbia University. Most recently, Dane was a Production Associate at CNBC in Primetime Programming and Development, working on a host of shows & CNBC specials. Other experience includes Audience Development Associate at Paper Mill Playhouse and casting work for both Paper Mill and MelCap Casting on a variety of off-Broadway, Broadway, touring, regional, and film projects. Dane has also held positions at Bravo and Roundabout Theatre Company, and

was a 2004 New York City Government Scholar. A Detroit native, Dane graduated magna cum laude from Seton Hall University with a B.A. in History & Economics.



**Sarah Wansley** (Assistant to the Producing Director) directed an ensemble for *#serials@theflea*. As a Directing and Producing Assistant at the McCarter Theatre, Sarah assisted such inspiring directors as Tina Landau, Emily Mann and Roger Rees, and directed a ten-minute play as part of McCarter's Youth Ink festival. She is also the founding Artistic Director of Aporia Theater. With Aporia, Sarah has directed and produced *Follow Me Down* at The Flea, *The Disappearance of Jonah* in the DC Fringe Festival, *Bare Naked Drama* at the Cherry Pit and Jimmy's No. 43, and *No Exit* at the Cherry Lane Studio. She also

produced the sold-out run of *Art of Attack* in the New York Fringe Festival this year. Sarah graduated summa cum laude from Columbia University with a B.A. in English Lit.



**Kyle Crose** (Assistant Technical Director) has worked as the Technical Director for the St Louis Ballet, and has installed theatrical lighting systems, fly systems, sound, and curtain systems all over the Kansas City area. He was technical director of three spaces in New Orleans with the Jefferson Performing Arts Society. This is his first permanent position in NYC and he is proud to be working with such a talented crew. In his spare time Kyle likes to run, not from anything in particular but for reasonably long distances and at reasonably high speeds. Kyle is still an active freelancer and also a strong believer in shameless

self promotion, so if you need any technical theatre work done, don't hesitate to e-mail me!

# WHAT IS THE FLEA?

The Flea is our theater: two small, unique performance spaces, located here at 41 White Street in Tribeca. The Flea regularly presents diverse, cutting-edge, and multi-disciplinary work, and has rapidly become a vital part of the city's cultural landscape. A state-of-the-art performance facility, The Flea has presented over 100 plays, 50 dance events, and 50 concerts since its founding fifteen years ago.

With talent, dedication, and a black belt in shoestring budgeting, we have reached our fifteenth season. Founded in 1996 by a group of acclaimed downtown theater artists, the award-winning Flea Theater was originally formed out of the purely artistic impulse to create "a joyful hell in a small space." We quickly became a downtown beacon for creative artists of every discipline, and soon a more formal mission was born: to raise the standards of Off-Off-Broadway for artists and audiences alike. Comfortable seats and decent dressing rooms became as much a part of our mission as talented artists and big ideas.

Now, in 2011, with a special achievement Drama Desk Award, an Otto, and two OBIE Awards to our credit, The Flea continues to embody the spirit of adventure and experiment that has defined Off-Off-Broadway since its inception. Part playground, part laboratory, and part training ground, we are home to emerging artists developing their ideas, mid-career artists solidifying their identities, and established artists going in new directions. With the continued participation of our founders and an ever-growing community of diverse and talented artists, our aim is to keep New York theater vital and to represent the wide range of what is possible Off-Off-Broadway.



# WHO & WHAT ARE THE BATS?

The Bats are our young resident company. Each year, over a thousand young actors audition for a place in this unique company. The Bats perform in long runs of challenging classics and new plays. Not a school, but a repertory company, The Bats also work to support all of the visiting artists at The Flea.



# WHAT IS OFF-OFF-BROADWAY?

Dating back almost fifty years, Off-Off-Broadway is distinguished by a spirit of adventure. It is where established artists go to take risks that the commercial arena does not allow, and it is where young, aspiring writers, directors, and performers learn their craft, develop their talents and begin their professional careers. Non-institutional and resolutely non-commercial, Off-Off-Broadway is as eclectic and varied as the city of New York. While other cities enjoy alternative theater and performance, none have communities as large and vital as New York's Off-Off-Broadway. Welcome and enjoy!

Visit [www.theflea.org](http://www.theflea.org) for videos, photos, and information on all things Flea!  
Find "The Flea Theater" on Facebook, Twitter & YouTube

# THE BOARD OF DIRECTORS

Chair

**Paul J. Elston**

President

**Jim Simpson**

Secretary

**Carol Ostrow**

Treasurer

**Emmeline Wexer**

Kyle Chepulis

Michael Graff

Jamie Harris

Kent Lawson

Douglas Liebhafsky

Andrea Miller

David Prittie

Bernadette Speech

Carol Tambor

Basil Walter

Sigourney Weaver

Katherine Weinhoff

Davis Weinstock

# THE FLEA CIRCUS CAMPAIGN

Fifteen years ago The Flea's founders undertook an artistic experiment, renting an old TriBeCa factory in the wilds of Lower Manhattan and opening the doors to the most iconoclastic and talented artists they could find. Since then The Flea has evolved into an award-winning theater known for presenting the very best of Off-Off-Broadway theater, music and dance.

We have also become an emblem for the resilience of Lower Manhattan, drawing more than 150,000 people to the area since the 9/11 attacks. To continue in that leadership role, we recently purchased a site nearby that is soon to become our permanent new home. Our goal is to continue producing our own intimate and exhilarating work while providing stability to dozens of other artists and performance groups. We are grateful to the following for their lead gifts to the project:

## **\$1,000,000 +**

The City of New York, Manhattan Borough President's Office, at the request of Scott Stringer  
Empire State Development Corporation, at the request of Governor George E. Pataki

## **\$500,000 – \$999,999**

Michael Graff & Carol Ostrow The Lower Manhattan Development Corporation  
A. R. & Molly Gurney The September 11th Fund through the Office of Mayor Michael R. Bloomberg  
New York City Council, at the request of Margaret Chin  
New York City Council, at the request of Jimmy Van Bramer

## **\$250,000 – \$499,999**

Anonymous Sigourney Weaver & Jim Simpson

## **\$100,000 – \$249,999**

Kyle Chepulis Paul J. Elston & Frances Beinecke Douglas Liebhafsky & Wendy Gimbel  
State of New York, at the request of State Senator Tom Duane David Prittie Basil Walter  
Davis Weinstock & Elizabeth Hawes International Creative Management, Inc.

## **\$50,000 – \$99,999**

The Lower Manhattan Cultural Council Andrea & George Miller  
Carol Tambor & Kent Lawson Katherine & Samuel Weinhoff

## **\$25,000 – \$49,999**

Jim & Suzy Cameron Massey Knakal Real Estate  
New York State Council on the Arts Daniel & Sue Rothenberg

## **\$1,000 – \$24,999**

Tom & Meredith Brokaw John & Karen Erickson Joseph F. Godfrey & Keith Halstead  
Mary G. Gurney Edward McKinley & Kathleen Lavidge Michael Miller  
Mike Nichols & Diane Sawyer Bernadette Speach & Jeffrey Schanzer Emma Sheaffer Charitable Trust  
David & Deborah Trainer Victoria G. Traube Emmeline Wexer

## **Under \$1,000**

Robert Ackerman & Carol Weston Alliance of Resident Theatres/New York  
Christopher Bumcrot & Evelyn R. Gurney Peter & Panda Coley Mary & Gordon Gould  
George G. & Constance W. Gurney Benjamin S. Gurney & Ann Baskowski Stephen R. Gurney  
Howard Kaminsky Frederick S. & Amy G. Nicholas Sally Wardwell

For more information on our Capital Project, please contact Carol Ostrow, (212) 226-0051 x104



The September



# FOUNDATIONS, CORPORATIONS, GOVERNMENT & INDIVIDUAL SUPPORT

## \$50,000+

Bloomberg LP

John Golden Fund  
Home Box Office, Inc.  
Dorothy Strelsin Foundation

Catherine Cahill & William Bernhard  
George & Jane Bunn  
William W. Cobbs  
Richard V. Giordano  
Elena & Everardo Goyanes  
Mrs. James B. Gubelmann  
Geoffrey & Sarah Gund  
Geoff Isles

## \$25,000 - \$49,999

NYC Department of Cultural Affairs  
Warburg Pincus

## \$1,000 - \$2,499

Gay & Harry Abrams/  
Abrams Artists Agency  
Catherine G. Adler  
Jody & Brian Berger  
Robert Browne  
James Cameron  
Barbara Bell Cumming Foundation  
Dramatists Guild Fund  
Edith Meiser Foundation  
Foundation for Contemporary Arts  
Francis Finlay

Carol Kaplan  
Jane Read Martin & Douglas McGrath  
Stephanie Zessos & John McGuire  
Andrea & Robert Meislin  
Memorial Foundation for the Arts  
Christian & Elizabeth Oberbeck  
Petrarca Restaurant  
Planalp-Trevor Charitable Trust  
Laurence Hazell & Mimi Quillin  
Sarah Beinecke & Craig Richardson  
Jonathan F.P. Rose

## \$10,000 - \$24,999

American Theatre Wing  
Anonymous  
Douglas Liebhafsky & Wendy Gimbel  
Office Max  
Prospect Hill Foundation  
Fan Fox & Leslie R. Samuels Foundation  
Shubert Foundation  
Harold & Mimi Steinberg Charitable Trust

Friars Foundation  
Harold Smith & James Franzen  
Jennifer Granozio  
Judi & Douglas Krupp  
Carla Solomon & Antonio Magliocco  
Rona + Randolph M. Nelson  
New York State Office of Parks, Recreation  
& Historic Preservation, at the request  
of Senator Thomas Duane  
Kathleen Murray & William Plapinger  
Harry & Jennifer Stout

Julie Sakellariadis  
Margaret Satchell, MD  
Joanne & Daniel C. Smith  
South's Restaurant  
David J. Stone  
Charbel & Aida Tagher  
Edward & Elizabeth Tirrell  
Edward Trach  
Jerome & Mary Vascellaro  
Robert & Carol Walker  
Basil Walter  
Steve & Nancy Schwartz-Weinstock  
Maura & Nick Wollner

## \$5,000 - \$9,999

20th Century Fox  
— in honor of Sigourney Weaver  
Achilles Foundation  
American Express — Fall Downtown  
A.R. & Molly Gurney  
Kent Lawson & Carol Tambor  
LeBaron Foundation  
Lucille Lortel Foundation  
Andrea & George Miller  
New York State Council on the Arts

## Partners (\$500+)

Anonymous  
Betsy Barbanell  
Elizabeth & David Beim  
Frederick & Candace Beinecke

## \$2,500 - \$4,999

Virginia & John Arcari  
Axe-Houghton Foundation  
Jennie & Richard DeScherer  
Jockey Hollow Foundation

## THE FLEA I.P.'S

In June of 2009, we established a new initiative called The Flea I.P.s. The Flea Theater represents a wide range of theatrical possibilities and our Flea I.P.s are the people who make these possibilities a reality. Comprised of our most loyal supporters, our Flea I.P.s participate in exclusive events that provide insider access, including private talk-backs and intimate dinners with the artists that call us home — just to name a few of the perks. The Flea I.P.s have committed their support for three full years, generously pledging \$5,000 each year.



Pssst! Interested? We'd love to welcome you to The Flea I.P.'s, too!

Please contact **Penn Genthner** at 212.226.0051 x 110 or [penng@theflea.org](mailto:penng@theflea.org) for more information.

The Flea proudly salutes our founding Flea I.P. members & thanks them for their unwavering support:

Frances Beinecke

Michael Graff

Catherine Schreiber &

John Beinecke

Celeste Guth

Miles Ruthberg

Ginny Benzak

Jeanne & Tom Hardy

Melissa Vail & Norm Selby

Lois Chiles

Wendy & David Hashmall

Nanahya Santana &

Douglas Durst

Loretta Hennessey

Hume Steyer

Paul Elston

William M. Hurt

Katherine & Sam Weinhoff

Heidi Ettinger

Shannon Wu & Joseph Kahn

Stephen & Cathy Weinroth

Fiddlehead Theatre Co.

Eleanora Kennedy

Davis & Betsy Weinstock

(Meg Fofonoff)

Sahra Lese

Ali Wambold &

Caroline Niemczyk

Monica Gerard-Sharp

Peter Joseph & Elizabeth Scheuer

# FLEA MEMBERS

## Donors (\$250-\$499)

Edward Albee  
Richard & Sue Baldwin  
Margaret Ball  
Barbara Bantivoglio  
Ennius E. Bergsma & Judy A. Bergsma Owen  
Ellen Davis  
Joanna Dean  
Frank and Helga Doyle  
David Emil  
Deborah and John Evangelakos  
Jacki Floren  
Bobby & Vicki Freeman  
Steven Gartner  
Jane Gelfman  
Mark Richard Genshiemer  
Bruce Goodrich  
Howard & Bonnie Graff  
Julia B. Hall  
Lynne Halliday  
Melinda Hardin  
Harry & Eugenie Havemeyer  
Georgianne Heller  
Bob and Ida Kowitz  
Gregory Long  
Shelley & Neil Mitchell  
Felicity Nitz  
Rabbi Peter J. & Kerry Rubenstein  
Ray Cave and Pat Ryan —  
Halcyon Foundation  
Kathleen E. Shannon  
Marjorie & Michael Stern  
Patricia Sullivan  
Elizabeth Duggal Taghipour  
Stephanie & Arthur Tatge  
Jonathan Weiner  
Emmeline Wexer

## Contributors (\$100 - \$249)

David & Connie Allan  
Anonymous  
Sharon Aresco  
Jacob S. Beinecke  
Helena & Peter Bienstock  
Barbara Bloom  
Sarah Bond  
Jackie Brody  
David & Lucy Carson  
Ronni & Ron Casty  
Susan & Jeffrey Chase  
The Bubble Lounge  
Lawrence & Ronnie Cohen  
Laurie Amory de Grazia  
Judy and Ira Dembrow  
Sarah Garfunkel &  
Adam Dembrow  
Sue Dorn  
Sara & Fred Epstein  
Carlo Fiorletta / GIAA  
George L. Fleming  
Dr. Anne Fribourg  
Stephen Friedman

Cheryl Tuttle & Henry Frommer  
Burton & Rita Goldberg  
Ellen Goldsmith-Vein  
Barbara Green  
Greenwich House Senior Center  
Gloria Griffith  
John and Diane Haney  
Mary R. Hardin  
Tim & Gail Harty  
Anne Herrald  
Harris & Randee Horowitz  
Adi Ignatius & Didna Elliott  
Joanne Jacobson  
Robin A. Jones  
Marianne & David Kaplan  
Lawrence P. Kenny  
Alicia Kershaw & C. Peter Rose  
Michele & Steve Klausner  
C&S International Insurance  
Brokers, Inc.  
Cynthia Krieger  
Roseanne Kumins  
Dr. Gudrun Lange &  
Benjamin Natelson  
Katharine Leech  
Peter Lehner and Fritz Beshar  
Sandy Linter  
Mark & Susan Lippitt  
Liz & Woody Littlefield  
Gregory Long  
Sam & Susie MacFarlane  
Sheila & David Manischewitz  
Kate Marber  
Doreen Memelo  
Richard & Judith Merbaum  
Dr. Michael A. Myers  
Judith Milhous  
Fred & Elizabeth Minnick  
David Mirkin  
Susan J. Mitchell  
Anonymous  
Elaine Montgomery  
Daria and David Moore  
Leslie Morioka  
Charles & Molly Mosely  
Lulie Lapore & Seth Mostkowitz  
Gary S. Nelson  
Gary & Judith Honig Pasquinelli  
Chris & Rata Patsiga  
Paul, Weiss, Rifkind, Wharton &  
Garrison Charitable Gift Fund  
Jody & Gary Peterson  
William Pike  
Denise and Jonathan Rabinowitz  
Colin Ramsey  
Karen & Andy Rhodes  
Mark Rossier  
Ellen & Norman Roth  
Frances Rubacha  
Peter & Kerry Rubenstein  
Margaret Ruddick  
Joseph Sadove

Eleanor W. Shakin  
Holly & Mark Siegel  
Jeremy Smith  
Fran Smyth  
Judith Solomon &  
Leonard Hellenbrand  
Eric Somers  
Laura Starr  
Dhuane Stephens  
Bruce Sunstein  
David I. Taylor  
Jay Topkis  
Dr. & Mrs. James Vogel  
Margaret Warner  
Claire Werner  
Edward B. Whitney  
Susan Wilen  
Wayne M. Winnick  
Ruth S. Zachary

## Members (\$50-\$99)

Carl Adkins  
Frances Beatty & Allen Adler  
Barbara Faith Alperin  
Marcia Anawalt  
Anonymous  
Jonathan Arak  
Karen W. Arenson  
Mary & Robert Ascheim  
Stuart L. & Mary V. Bell  
Gail Berry  
Adam Bloom  
Camille Broussard  
Paul and Susan Buck  
Charles & Helen Cairns  
Linda Calandra  
Jill Campbell  
Charles Carberry  
A. Figrant  
Karen & Ron Crawford  
Kendra Decious  
Allan & Erica Deutsch  
Charles Dische  
Josh & Kerry Dorf  
M. Burton Drexler  
Malcolm A. Duffy  
Lynn Shelly & Larry Ellmaker  
Clarice Feinman  
Susan Fleischer  
Charles A. Forma  
Melissa Gibbs  
Rev. James L. Gill  
Betty & Joshua Goldberg  
Gail Gordon  
Fiona Graff & Martin Kurzweil  
Robert D. Grant  
Susan & Alan Guma  
Michael Hackett  
Irene Hamm  
Jay Harris  
Ryan L. Hart  
Robert L. Hawk  
Norman Holland  
Leonora Hollman

Paul Howard  
Mimi Z. Hurley  
Buzz & Mary Ann Hutchison  
Mary Jacobson  
Bill and Karen Kaufmann  
Carol W. Kelley  
Eugene Kilik  
Kaori Kitao  
Anika Larsen  
Robert Lesser &  
Ann Louise Bardach  
John Harrison  
Janet Mardfin  
Bernard Maskit  
Kent & Linda McKamy  
Drs. Theodore F. &  
Crole M. Mucha  
Wendy Newman  
Steve Oksas  
Isabelle & Aharon Orlansky  
Harold Prince  
Gary Purwin  
Cooper Rathburn  
Henry Anthony Reilly  
Matthew A. Rosen  
Todd & Lori Rosen  
Josh Sabarra  
Susan & Stephen Schneider  
Petra Schumacher  
Roberta Lee Scott  
Rosemarie Conforte &  
William Seizer  
Paul Shelly  
Donald Shire  
Lee Shull  
Heather Slosar  
Caroline & Kevin R. Smith  
Diana Son  
Andre Spears  
Peggy Stafford  
Elizabeth Stanton  
Jeanne & Stephen Stelman  
Donald Thomas  
Samantha Van Allen  
Robert & Judith Waldman  
J. Marvin Watts  
Alex & Barbara Waugh  
Judith Wink & Michael Zumoff  
Shirley A. Wright

## Special thanks to our \$25 members

List as of April 15, 2011

## COMING SOON

*The Flea Theater presents  
the World Premiere of*

### **JUST CAUSE**

written & directed by **Zack Russell**

**May 6 - April 6**

Thur - Sat @ 9 PM | Sun - Mon @ 7 PM

(with added show 4/17 @ 9pm; no shows 4/16, 4/27-4/30)

*What is freedom, and how can I get some?* JUST CAUSE is a subversive comedy that follows a group of young revolutionary Brooklynites seeking violent change. Armed with iPhones, handguns, and inherited ideals, these would-be terrorists are determined to find meaning—by any means necessary.

*The Flea Theater presents*

### **QUELL YOUR FUTURE ANXIETY**

an evening to benefit The Flea

**May 16 @ 7 PM**

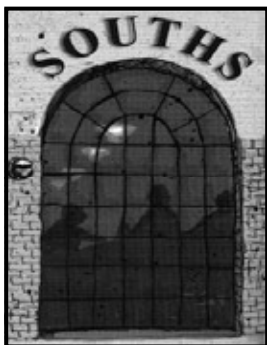
7 World Trade Center (250 Greenwich Street, NYC)

Imbibe with The Flea and enjoy delicious sustenance, delightful entertainment featuring The Bats and artists of The Flea and delectable live auction items all tailored to soothe a wrinkled brow and calm a tortured soul.

**Tickets: \$750 per person, \$7,500 for a table**

To purchase your tickets, visit [www.theflea.org](http://www.theflea.org) or call us at (212) 226-0051 ext. 102.

## WE RECOMMEND



273 CHURCH STREET  
212-219-0640

**PETRARCA**  
CUCINA E VINO

34 WHITE STREET  
212-625-2800

**Saluggi's**  
NEW YORK CITY

325 CHURCH STREET  
212-226-7900



228 WEST BROADWAY  
212-431-3433



# Become a Member

## THE FLEA THEATER MEMBERS PROGRAM

Get Special Attention. Support The Flea. Be a Member.

Our theater is tiny and we sell out...fast. Members get guaranteed seats plus exclusive discounts, invites, drinks & inside info! All levels of membership are 100% tax-deductible.

### \$25 Member

Guaranteed ticket availability  
Exclusive Member discounts  
Advance notice and reservations, prior to general public  
No booking or convenience fee

### \$50+ Supporter

All of the above, plus:  
Exchange your tickets up to 24 hours in advance  
Discounts at select Tribeca restaurants with Member Card  
Listing in show programs

### \$100+ Contributor

All of the above, plus:  
2 complimentary drinks at our bar for every show

### \$250+ Donor

All of the above, plus:  
4 complimentary drinks at our bar  
Invitations to readings and special events

### \$500+ Partner

All of the above, plus:  
Unlimited complimentary drinks  
Access to Broadway house seats  
Dinner reservations at select Tribeca restaurants, subject to availability

### \$1,000+ Patron

All of the above plus:  
Invitation to select Opening Night performances and cast parties

**CLICK HERE, CALL 212.226.0051 x101, or MAIL/FAX the form below to join!**

I WANT TO JOIN THE FLEA! (Please check membership level below)

\$25 Member

\$50 Supporter

\$100 Contributor

\$250 Donor

\$500 Partner

\$1,000 Patron

NAME (as should be listed) \_\_\_\_\_

ADDRESS \_\_\_\_\_

CITY, STATE, ZIP \_\_\_\_\_

EMAIL \_\_\_\_\_ PHONE \_\_\_\_\_

CREDIT CARD # \_\_\_\_\_ EXP. \_\_\_\_\_ SECURITY CODE \_\_\_\_\_

Mail this form with a check to THE FLEA MEMBERS PROGRAM, 41 White Street, New York, NY 10013 or fax this form with your credit card information to (212) 965-1808. Questions or concerns? Call us at 212-226-0051 x102.