



**but i cd only  
whisper**

**by Kristiana Rae Colón  
directed by David Monteagudo  
featuring The Bats**

**february 18 – march 14**

**the  
flea**



# THE FLEA THEATER

**NIEGEL SMITH** ARTISTIC DIRECTOR

**CAROL OSTROW** PRODUCING DIRECTOR

PRESENTS THE AMERICAN PREMIERE OF

# but i cd only whisper

BY **KRISTIANA RAE COLÓN**

DIRECTED BY **DAVID MONTEAGUDO**

FEATURING **THE BATS**

**CRYSTAL ARNETTE, AKEEM BAISDEN FOLKES, TOUSSAINT JEANLOUIS,  
KINETA KUNUTU, BRANDON RUBIN, MATT STANGO,  
CLEA DECRANE, JACK HORTON GILBERT,  
JUSTIN PHILLIPS, TERRALON WALKER**

**STARLET JACOBS** SCENIC DESIGN **ELAINE WONG** LIGHTING DESIGN

**ARI FULTON** COSTUME DESIGN **D.R. BAKER** SOUND DESIGN

**HYE YOUNG CHYUN** PROPS MASTER

**GERRY RODRIGUEZ** FIGHT CHOREOGRAPHY **MICHELLE COLE** CHOREOGRAPHY

**MICHAL V. MENDELSON** PRODUCTION MANAGER **KAILA HILL** STAGE MANAGER

**JOSEPH BARNES** TECHNICAL DIRECTOR **THIERRY LOGIC THOMPSON** GRAPHIC DESIGNER

**RON LASKO/SPIN CYCLE** PRESS REPRESENTATIVE

# CAST

beau willie brown ..... Toussaint Jeanlouis  
 crystal ..... Kineta Kunutu  
 drummond..... Brandon Rubin  
 geneviève ..... Crystal Arnette  
 marshall..... Matt Stango  
 marvin..... Akeem Baisden Folkes

# UNDERSTUDIES

beau willie brown/marvin..... Justin Phillips  
 crystal ..... Terralon Walker  
 drummond..... Nigel Smith  
 geneviève ..... Clea DeCrane  
 marshall..... Jack Horton Gilbert

# SPECIAL THANKS:

Ntozake Shange, Kevin Kittle, Cheryl Katz

# CREATIVE TEAM

Playwright.....	<b>Kristiana Rae Colón</b>
Director .....	<b>David Monteagudo</b>
Scenic Design.....	<b>Starlet Jacobs</b>
Lighting Design.....	<b>Elaine Wong</b>
Costume Design .....	<b>Ari Fulton</b>
Sound Design .....	<b>D.R. Baker</b>
Fight Choreographer .....	<b>Gerry Rodriguez</b>
Movement Choreographer .....	<b>Michelle Cole</b>
Props Master .....	<b>Hye Young Chyun</b>
Production Manager.....	<b>Michal V. Mendelson</b>
Stage Manager.....	<b>Kaila Hill</b>
Technical Director .....	<b>Joseph Barnes</b>

# FLEA STAFF

Artistic Director.....	<b>Niegel Smith</b>
Producing Director .....	<b>Carol Ostrow</b>
General Manager.....	<b>Joshua Cohen</b>
Artistic Associate .....	<b>Erin Daley</b>
Marketing Associate.....	<b>Ellie Philips</b>
Audience Development Associate.....	<b>Kayla Sklar</b>
Development Associate .....	<b>Charlie Madison</b>
Technical Director .....	<b>Ali Akbarian</b>
Assistant Technical Director.....	<b>Jen Medina-Gray</b>
Capital Project Manager .....	<b>Tim Catlett</b>
Costume Manager .....	<b>Grace Interlichia</b>
Graphic Designer.....	<b>Thierry Logic Thompson</b>
Videographer.....	<b>Scott Fetterman &amp; Crystal Arnette</b>
Photographer.....	<b>Hunter Canning</b>
Accountant.....	<b>Joel Faden &amp; Company, Inc.</b>
Attorney.....	<b>Carol M. Kaplan/Loeb and Loeb</b>
Development Consultant.....	<b>Rachel Colbert</b>
Theater, Technical & Production Consultant.....	<b>Kyle Chepulis</b>
Press Representative .....	<b>Ron Lasko/Spin Cycle</b>

# THE COMPANY



**CRYSTAL ARNETTE** (geneviève) This is Crystal's 6th season as a Bat at The Flea -- where she has been a mainstay in *#serials@theflea* & currently serves as its co-producer + roles in *Mary-Kate Olsen Is In Love*, *Looking At Christmas*, and *Just Cause*. Other credits: *The House of Von Macramé*, *F#@king Up Everything*, and *The Consequences*. Film & TV: *What We've Become*, *You Can't Kill Stephen King*, *Polaroid Girl*, "Power" (Starz), and "I Love You But I Lied" (Lifetime). Crystal creates video with Adventure We Can & fronts the folk-chamber-rock experiment Ladybird. She also really likes typography. BFA: UNCSA [crystalarnette.com](http://crystalarnette.com)



**AKEEM BAISDEN FOLKES** (marvin) Regional Credits: *Twelfth Night* directed by Tony Nominee Moritz von Stuelpnagel. New York Credits: *Queer Spawn* (HERE Arts Center), *Welcome Home Dean Charbonneau* w/ Ellen Burstyn (Atlantic Theater Company), *Austerity of Hope* (Abingdon Theatre), *Out of Joint* (The Lark), *Unexplored Interior* (The Flea), *The Green* (59E59 Theaters), *American Drum Circle* (The Actors' Studio), *Avant-Garde-Arama* (P.S. 122). Proud member of The Flea's Resident Acting Company, the Bats. For all the slick cats mixed up with the blank panthers.



**TOUSSAINT JEANLOUIS** (beau willie brown) Honored to be gifted with challenging work and being a new member of the wonderful Bat Company in the Flea Theater community. Alumni of Arizona State University (BA Theater) and California Institute of the Arts (MFA Acting). Most recently seen as an original Butler in *Queen of the Night* at The Diamond Horseshoe and Pastor Dave in Emma Stanton's *JITTERBUG* at Dixon Place. For more info [www.ToussaintJeanlouis.com](http://www.ToussaintJeanlouis.com)



**KINETA KUNUTU** (crystal) South African born Actor. Recent credits include; *Macbeth* (The Drilling Company), *Mandela* (East Harlem Repertory Company), *Romeo and Juliet*, *Richard II* (Hamlet Isn't Dead), *Robot For Christmas* (Stages on the Sound). This is Kineta's first bat production with the Flea Theater.

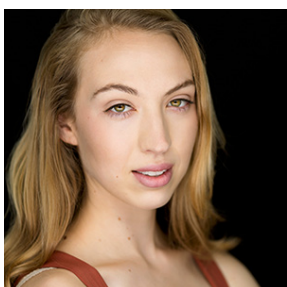


**BRANDON RUBIN** (drummond) is an MFA graduate from Mason Gross school of the arts he is thrilled to be making his Bat debut in such a beautiful piece. He was recently seen as Fool #4 in *The Judgement of Fools* by Bernardo Cubria at Intar Studios and Snug the Joiner in *A Midsummer Night's Dream* by William Shakespeare.



**MATT STANGO** (marshall) is a native New Yorker and graduate of LaGuardia high school and SUNY Purchase for acting. Other credits at The Flea include *The Mysteries* directed by Ed Sylvanus Iskandar, and *Agnosophobia* directed by Rachel Karp. Matt is honored to be working on such a brilliantly written and important play, alongside this incredibly talented cast. For more on Matt, visit [MattStango.com](http://MattStango.com)

## UNDERSTUDIES



**CLEA DeCRANE** (u/s geneviève) is super pumped to be a part of her first show with The Flea! Last year, she graduated from the BFA acting conservatory at Rutgers University. Her final year she starred in shows new and old directed by Moritz Von Steulpnagel, Knud Adams, and David Esbjornson. Since graduating, she's performed in EST's Youngblood production *Metrocards* and the New York premiere of Lynn Nottage's *Las Meninas*. Next up, she'll be understudying Nina in The Pearl's upcoming production of *Stupid F\*cking Bird* by Aaron Posner.



**JACK HORTON GILBERT** (u/s marshall) BFA in Theatre Performance Ohio University 2010. *The Flea: Student Body (u/s), The Feast (u/s), The Mysteries, The Cutthroat Series*, as well as the upcoming *Wolf in the River* written and directed by Adam Rapp. Select past credits include the Off-Broadway production of *Happily After Tonight*, Endtimes' annual, notorious *Naked Holidays*, and Ripple Effect's production of *Waiting For Lefty*.



**JUSTIN PHILLIPS** (u/s beau willie brown, u/s marvin) New York: *The Christians* (Playwrights Horizons), *Macbeth* (The Theatre Project), *Destiny Is Judd Nelson* (dir. Olivia Hartle, FringeNYC), *Raisin In The Sun, Dreamgirls* (Black Curtain Productions). Web Series: *Uncharted* (Jermaine) TV/Film: *Police State, Coming Out: A Documentary*. Proud Esper Studio graduate! @jphilzZz



**TERRALON WALKER** (u/s crystal) hails from Houston, TX. She received her Bachelors of Fine Arts from Mason Gross School of the Arts at Rutgers University in 2014. She has been in several projects since her graduation from Rutgers. To keep up with Terralon, follow her on Instagram @terralonwalker and visit [www.terralonwalker.com](http://www.terralonwalker.com)

## CREATIVE TEAM

**KRISTIANA RAE COLÓN** (playwright) is a poet, playwright, actor, educator, Cave Canem Fellow, and Executive Director of the #LetUsBreathe Collective. Her play *Octagon*, winner of Arizona Theater Company's 2014 National Latino Playwriting Award and Polarity Ensemble Theater's Dionysos Festival of New Work, had its world premiere at the Arcola Theater in London in September 2015. Her work was featured in Victory Gardens' 2014 Ignition Festival. In 2013, she toured the UK with her collection of poems promised instruments published by Northwestern

University Press. In autumn 2012, she opened her one-woman show *Cry Wolf* at Teatro Luna in Chicago while her play *but i cd only whisper* had its world premiere at the Arcola Theater in London. Kristiana is a member of the Goodman Playwrights Unit, a Resident Playwright at Chicago Dramatists and one half of the brother/sister hip-hop duo April Fools. She appeared on Season 5 of HBO's *Def Poetry Jam*.

**DAVID MONTEAGUDO** (director) David's work has been featured at The Flea Theater, Theater for the New City, The Tank, The PanAmerican Games, and elsewhere. He has developed new plays with Ma-Yi Theater, The Atlantic, N.Y.U., Columbia University, and The Barn Arts Collective. As Co-founder and Creative Director of State of Play he explores the intersections of theatrical conventions, play theory, and spectacle to craft new forms of live entertainment. Recognized by Come Out and Play 2015 - Best use of Narrative this work was most recently featured in a partnership with The Digital Media Lab at the Metropolitan Museum of Art.

**STARLET JACOBS** (scenic design) is currently the associate set designer on *DISASTER!* on Broadway. Some previous theater credits include: *Tonya & Nancy: The Rock Opera* (set designer), *Bright Star* (associate set designer), *Soul Doctor* (Prop Master), and *Fortress of Solitude* (associate set designer). She has worked as an art director on *Saturday Night Live!*, *The Tonight Show with Jimmy Fallon*, *Unbreakable Kimmy Schmidt* (assistant), on several web series and commercials, and on two recent comedy specials for Netflix and EPIX.

**ELAINE WONG** (lighting design) is originally from Mississauga, Ontario, and received her MFA in Lighting Design from Rutgers University's Mason Gross School of the Arts. Recent design credits: NYC: *One 1*, *Diving Lines*, *Much Ado About Nothing* (Snapped Productions); *Vietnam... Through My Lens* (LSNelson Productions); *BUBBA* (Black Angus Productions). NJ: *Tick Tick Boom* (American Theater Group); *Carmen* (State Repertory Opera of NJ); *Once Upon a Mattress* (Princeton Festival); *Tales of Hoffmann*



(Rider University). CO: *Moon Over Buffalo*, *Damn Yankees*, *The Secret Garden*, *Tarzan*, *Joseph*, and *Misterman* (Pagosa Springs Center for the Arts). [www.elainewong-LX.com](http://www.elainewong-LX.com).

**ARI FULTON** (costume design) is a New York based costume designer for stage and film. Design credits include: *Force Continuum*, *R/evolution*, *In the Next Room (or the vibrator play)*, *Wake*, *Machinal*, *Meantime*, *The Widow of Tom's Hill* and *Hurrah for the Next to Die*. Ms. Fulton is happy to be making her design debut at The Flea Theater.

**D.R. BAKER** (sound design) is a writer, composer, and sound artist. Flea credits include design for *The Get-A-Way* and *The System*, associate sound for *Happy Days*, and engineering for *Fulfillment*. Other credits include: *Karaoke Bacchae* (design, Meta PhysEd/Ice Factory); *Reread Another* (engineering, Target Margin Theater); and a season at The Monomoy Theatre in Chatham, MA. Dan plays guitar and sings for the band Friends in Distraction, and earned a BFA from Ohio University in 2014. Visit [danbakerisokay.com](http://danbakerisokay.com) for more.

**HYE YOUNG CHYUN** (props master) is a current member of The Bats which is the resident acting company at The Flea Theater. She has a background in puppetry, building and playwriting. She went to Mount Holyoke College for her undergrad and she recently graduated Sarah Lawrence College for her graduate studies. She is honored to be involved as part of the creative team. Thank you!

**GERRY RODRIGUEZ** (fight choreography) is a happy to represent Uncle Dave's Fight House. His most recent moments of violence include *Ropes* at Two River Theater, *Kill Floor* at LCT3, *Sommerfügl* for InViolet Theater and at theatres such as INTAR Theatre, The Working Theater, Playwrights Realm, The Representatives, Playhouse Creatures, Two River Theater, Cincinnati Playhouse among others. He is also an actor and proud member of InViolet Theater.

**MICHELLE COLE** (movement choreography) is a Brooklyn based dancer, choreographer, educator, and scholar. She has a Masters in Dance Education from New York University. She has danced, taught, performed and presented in Miami and Orlando, Florida, Chicago, Illinois, New York, and Uganda, Africa. Her dance repertoire includes Hip Hop, Modern/Contemporary, dances from cultures in Africa, Improvisation, Stepping and more. Her most current work, “INjustice” (2014) was inspired by social justice issues. She is currently Adjunct faculty at NYU Steinhardt’s Dance Education program in the Music and Performing Arts Department.

**MICHAL V. MENDELSON** (production manager) Michal is glad to be back at The Flea. Her other NY credits include The New School for Drama, New Georges, Red Fern Theatre, TerraNova Collective, New Dramatists, The Pearl Theatre, Studio 42, Ensemble Studio Theatre, Dog-Run Rep, and Worth Street Theatre. Regionally, she has stage managed for Wellfleet Harbor Actors Theatre, Berkshire Playwrights Lab, and Fairfield Theatre. She is a proud member of Actors Equity.

**KAILA HILL** (stage manager) is a recent graduate from Otterbein University with a BFA in Theatre: Design/Technology. She has previously worked with the Williamstown Theatre Festival in their 2014 season, the Sanguine Theatre Project Playwright Festival, Hard Spark’s *R&J&Z*, The Flea Theater, the Public Theatre, the NYC Fringe Festival, and Half Moon Theatre.

**JOSEPH BARNES** (technical director) is proud to be a part of the Flea Theater’s staff this winter. Joey is currently doing freelance theater and technical directing in New York. He has built sets for the Williamstown Theatre Festival, the Vineyard Theater, Vertical Player Repertory as well as several schools and summer stocks/theater camps. He has been building sets, hanging lights, running shows and stage managing for the past ten years. He recently was Technical Director of a production of *Blood Brothers* at the Vineyard. Joey is recent graduate of Colby College with a degree in East Asian Studies, and lives in Brooklyn, NY.

# THE FLEA STAFF



**NIEGEL SMITH** (Artistic Director) is a theater director & performance artist. His theater work has been produced by Classical Theatre of Harlem, HERE Arts Center, Hip Hop Theatre Festival, The Invisible Dog, Luna Stage, Magic Theatre, Mixed Blood, New York Fringe Festival, New York Live Arts, Phoenix Theatre Ensemble, The Public Theater, Summer Play Festival, Todd Theatre and Under the Radar, and his participatory performances have been produced by Abrons Arts Center, American Realness, Dartmouth College, Elastic City, The Invisible Dog, Jack, The New Museum, Prelude Festival, PS 122, the Van Alen Institute and Visual AIDS. He often collaborates with artist Todd Shalom and playwright/performer Taylor Mac.

Smith, a graduate of Dartmouth College, was the associate director of the Tony Award winning musical *FELA!*, assistant directed the off-broadway production of *The 25th Annual Putnam County Spelling Bee* and both the Broadway and off-broadway productions of Tony Kushner's *Caroline, or Change*. He has received residencies, grants and/or fellowships from Brooklyn Arts Council, Brooklyn Arts Exchange, Lower Manhattan Cultural Council, Sundance Theatre Lab, Theater Communications Group, Tucker Foundation, Van Lier Fund and VoxFest. Before surviving high school in Detroit, he grew up in the North Carolina piedmont, fishing with his dad, shopping with his mom and inventing tall-tale fantasies with his two younger brothers.



**CAROL OSTROW** (Producing Director) Carol Ostrow (Producing Director) joined founder Jim Simpson at the helm of The Flea in 2001 and *The Guys* marked her return to Off-Off-Broadway. She was the OBIE-award winning Producing Director of the Classic Stage Company as well as the founder and original Producing Director of The Powerhouse Theater at Vassar, now

in its 31st season. In between, she has been an adjunct professor of theater at Vassar College, Chatham College and McGill University. For The Flea, Carol has produced 15 seasons of world premiere productions and has been responsible for the sound management of the theater's increasing programming and budget. She is also overseeing The Flea's capital campaign that will result in a new performing arts center for The Flea to be launched in 2017. (Stay tuned!) Carol is a graduate of Vassar College and the Yale Drama School. She is a new trustee of Vassar and she also serves on the Board of Advisors of the Yale Drama School. Beyond her alma maters, she is a member of the board of Central Synagogue, the National Psoriasis Foundation, the MacDowell Colony and LAVA, an acrobatic dance collective in Brooklyn. She is also a Wall Street Journal Expert, where she writes on small business for the paper's online edition. Married and the mother of four incredible and launched young adults, she and her family count Pittsburgh, London, Montreal and now New York City once again as home.



**JOSHUA COHEN** (General Manager) previously worked at Roundabout, holds degrees from Amherst College and NYU/Tisch, and has been a stage manager/lighting designer in downtown modern dance. He is also a writer for the theater, a Jonathan Larson Grant winner whose work includes *The Thirteenth Commandment* (Libra Theater Co., seven NYIT Award nominations, two wins); lyrics, *Keep On Walkin'* (Anna Zornio Children's Theater Playwriting Award); and book/lyrics, *Tamar of the River* (Prospect Theater Co., two Drama Desk nominations; world premiere recording, Yellow Sound Label). He lives in Washington Heights with his wife Anne and two children.



**ERIN DALEY** (Artistic Associate) Prior to The Flea, Erin produced the Eugene O'Neill festival at Arena Stage and spent three years as a coordinator in Los Angeles working in film and commercials. After cutting her teeth as an independent producer and director, Erin is thrilled to have found a home at The Flea where she can continue to work with exciting and innovative artists. Erin is proud to have graduated from Skidmore College.



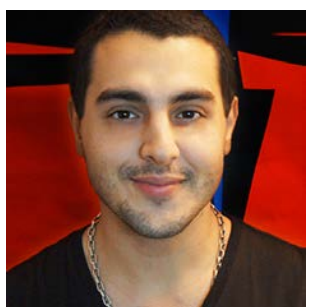
**ELLIE PHILIPS** (Marketing Associate) is a native New Yorker with a deep love for both acting and marketing. An alumna of Oberlin College, Ellie has worked as a graphic designer, marketing associate, social media advisor, and press rep with and for a variety of companies and productions, including her alma mater, Boneau/Bryan-Brown, Slightly Altered States, and Hedgepig Theater Ensemble. She is a proud former-member of the Bats, and is very excited to promote the fantastic work happening at The Flea. She is currently appearing in *Puffs: or Seven Increasingly Eventful Years...* at The People's Improv Theater. [www.eleanorphilips.com](http://www.eleanorphilips.com)



**KAYLA SKLAR** (Audience Development Associate) Passionate about non-profit theater, Kayla has previously worked at 59E59, Ars Nova, and The Public. She graduated from the University of Georgia with degrees in Digital Marketing and Mass Media, and is proud to have been the Artistic Director of The Thalian Blackfriars, one of UGA's oldest organizations. Having lived in Atlanta for most of her life, she's excited to finally call this wonderful city her home.



**CHARLIE MADISON** (Development Associate) is a recent graduate from Brandeis University, where he majored in both Psychology and Musical Theater Writing. While at Brandeis, Charlie wrote and directed an original play, *Lost Girls*, and an original full length musical, *Grace*. Other notable accomplishments include music directing his undergraduate a cappella group, Company B, and serving as Programs Assistant in the Brandeis Office of the Arts. Charlie began his experience in not-for-profit theater as an Artistic Intern at Central Square Theater (Cambridge, MA); since then he has served as the inaugural Summer Apprentice at the Arden Theatre Company (Philadelphia, PA) and was Manhattan Theatre Club's Fall 2015 Institutional Giving Intern. Out the office, Charlie enjoys singing his heart out, writing musicals and plays, and thrifting: his inspirations include Jeanine Tesori, Janet Jackson, Adam Guettel, and the one and only Mariah Carey.



**ALI AKBARIAN** (Technical Director) Born in Canada, Ali has always been captivated by the mechanics of his surroundings and curious as to how things work on the inside; logically and emotionally. After a glimpse of potential in 2006, Ali set out to the University of Florida and found a path in theatre. Immediately following his graduation at the top of his class in Scenic Design; he was contracted for a year long residency at one of the most successful regional theatres in the southeast, The Hippodrome. Ali was contracted as Production Manager by a leading Event Decor company in the southeast region months before the end of his residency. Excelling in the commercial market while managing over eight productions a week with over thirty staff members and over-hire in multiple spaces; Ali's future in theatre was fading away quickly. On December 20th, 2015 this realization was cemented into his soul and so the following week he sold his motorcycle, car, and three quarters of his apartment. By December 27th, 2015 Ali moved home, Brooklyn, New York!



**JEN MEDINA-GRAY** (Assistant Technical Director) is a 2014 graduate of Syracuse University with a BFA in Design and Technical Theatre. She studied set design and technical direction in school and aspires to be a positive force in the technical theatre world. After living in Portland, Maine for a year after school and going on a soul searching trip through Eastern Europe, Jen landed in NYC in September 2015 and has been at The Flea ever since.

# WHAT IS THE FLEA?

The Flea is our theater: two unique and intimate performance spaces, located here at 41 White Street in Tribeca. But The Flea is also an award-winning producing organization, founded in 1996, that offers more than 250 cutting-edge theatrical and multi-disciplinary performances each year and gives voice to some of the most exciting and innovative writers of our time.

Founded from the purely artistic impulse to create “joyful hell in a small space,” our body of work has earned us accolades from across the globe including two Obie Awards for Best Production, an Otto for Courageous Political Theater, and a Drama Desk Award Special Award for our commitment to adventurous theater. Our 2001 production of *The Guys*, a raw artistic response to the events of 9/11, became a phenomenon that played to sold-out houses for 13 months and quickly cemented our leadership role in the downtown, Off-Off-Broadway and Lower Manhattan communities.

The Flea is a beacon for adventurous audiences and creative artists of all stripes, from the young striver to the legendary veteran. More than 150,000 people have come to The Flea to witness the rare spark created when artists are given free rein to play, experiment and invent—often in ways that the commercial theater can’t support. And it is that spark that fulfills our mission, pure and simple: to embody the spirit of adventure and excitement that has defined Off-Off-Broadway since its inception.



# WHO & WHAT ARE THE BATS?

The Bats is our critically acclaimed resident company, cast anew each year from over 1,000 aspiring young actors. Voted “Best Off-Off-Broadway Company to Act In” by Backstage, being a Bat offers young artists the rare opportunity to break into the field with real life experience, performing in front of an audience on a regular basis and working to support The Flea and its visiting artists. All in one night, a Bat may tear your ticket, pour you a drink and rivet your soul to the stage.



# WHAT IS OFF-OFF-BROADWAY?

Dating back over fifty years, Off-Off-Broadway began informally--an alternative, non-commercial environment where new ideas and projects were born out of energetic and often happenstance encounters. Hundreds of well-known artists credit this adventurous and free-spirited time with their falling in love with theater, and getting good at what they do.

**Visit [www.theflea.org](http://www.theflea.org) for information on all things Flea!**

**Find The Flea Theater on Facebook, Tumblr, Twitter & YouTube.**

# THE BOARD OF DIRECTORS

## Chair

Linda Schupack

## President

Carol Ostrow

## Secretary

Douglas Liebhafsky

## Treasurer

Joanna Smith

Kyle Chepulis

Michael Graff

Jamie Harris

Wendy Harrison Hashmall

Andrea Miller

Stephanie Morimoto

David Prittie

Nanahya Santana

Jim Simpson

Jeremy Smith

Niegel Smith

Tony Tramontin

Basil Walter

Sigourney Weaver

Katherine White Weinhoff

Stephen Weinroth

Davis Weinstock

Emmeline Wexer



# THE FLEA I.P.'S

In June of 2009 The Flea launched a unique patron program called The Flea IPs - an elite and dedicated group that helps to make the dreams of The Flea a reality. Flea IPs gain insider access through exclusive events including private talk-backs, intimate artist dinners, master classes and first-look readings. Flea IPs commit their support by generously pledging \$5,000 each year.



**Interested? We'd love to make you a Flea IP too!**

Please contact Carol Ostrow at 212.226.0051 x104 or [carolo@theflea.org](mailto:carolo@theflea.org) for more information.

The Flea proudly salutes our Flea I.P. members and thanks them for their unwavering support:

**John & Gaily Beinecke**

**James Cameron**

**Lois Chiles**

**Heidi Ettinger & Jonathan Reynolds**

**Monica Gerard Sharp & Ali Wambold**

**Edwin A. & Lorna B. Goodman**

**A.R. & Molly Gurney**

**Jamie & Jeffrey Harris**

**Lauralee & Walter N. Howley**

**Larry Kanter & Shelly J London**

**Kristina & Stephen Lang**

**Sahra Lese**

**Douglas Liebhafsky & Wendy Gimbel**

**James L. Melcher**

**Andrea & George Miller**

**Carol Ostrow & Michael Graff**

**Fred and Nancy Poses**

**Sue Rothenberg**

**Linda Schupack**

**Jeremy T. Smith**

**Barbara Vogelstein**

**Sigourney Weaver & Jim Simpson**

# THE FLEA CAMPAIGN

Twenty years ago The Flea's founders undertook an artistic experiment, renting an old TriBeCa factory in the wilds of Lower Manhattan and opening the doors to the most iconoclastic and talented artists they could find. Since then The Flea has evolved into an award-winning theater known for presenting the very best of Off-Off-Broadway theater, music and dance.

We have also become an emblem for the resilience of Lower Manhattan, drawing more than 150,000 people to the area since the 9/11 attacks. To continue in that leadership role, we recently purchased a site nearby that is soon to become our permanent new home. Our goal is to continue producing our own intimate and exhilarating work while providing stability to dozens of other artists and performance groups. We are grateful to the following for their lead gifts to the project:

## VISIONARIES (\$500K+)

Anonymous  
 Borough of Manhattan New York  
 Scott M. Stringer, President  
 City of New York  
 Michael R. Bloomberg, Mayor  
 Empire State Development Corporation  
 Julie Shimer, Chairman  
 Ford Foundation  
 Howard Gilman Foundation  
 The Lower Manhattan  
 Development Corporation  
 New York City Council  
 Christine C. Quinn, Speaker  
 Margaret Chin, Council Member  
 James Van Bramer, Council Member  
 The September 11th Fund  
 State of New York  
 Andrew M. Cuomo, Governor  
 George E. Pataki, Governor  
 Carol Ostrow & Michael Graff  
 A.R. & Molly Gurney

## ANGELS (\$250K+)

Anonymous  
 LuEsther T. Mertz Advised Fund  
 Paul Elston & Frances Beinecke  
 Douglas Liebhafsky & Wendy Gimbel  
 Sigourney Weaver & Jim Simpson

## GUARDIANS (\$100K+)

Bloomberg Philanthropies  
 Dormitory Authority  
 of the State of New York

Paul T. Williams, Jr., President  
 Booth Ferris Foundation  
 International Creative  
 Management, Inc.  
 The Prospect Hill Foundation  
 Kenes Rakishev &  
 Aselle Tasmagambetova  
 Katherine & Samuel Weinhoff  
 Stephen & Cathy Weinroth  
 Davis & Betsy Weinstock

## PRODUCERS (\$50K+)

The Irene Diamond Fund  
 Lower Manhattan Cultural Council  
 United Talent Agency  
 Lauralee & Walter N. Howley  
 Dennis Mehiel  
 All The Way Foundation  
 Liam Neeson  
 In Memory of Natasha Richardson  
 David Richenthal  
 Celeste & Tony Tramontin

## DIRECTORS (\$25K+)

Massey Knakal Real Estate  
 New York State Council on the Arts  
 Aby Rosen, Chair  
 Lisa Robb, Executive Director  
 The Fran & Ray Stark Foundation  
 Jim & Suzy Cameron  
 Kyle Chepulis  
 Susan Cooper Cronyn  
 Wendy & David Hashmall  
 Marilyn & Jeffrey Katzenberg

Kathleen Kennedy & Frank Marshall  
 Ed & Patricia Matthews  
 Gould Family Foundation  
 David Prittie  
 Daryl Roth & Jordan Roth  
 Dan & Sue Rothenberg  
 Linda Schupack & David Good  
 Ted Snowdon  
 Edward Trach  
 Basil Walter

**ARTISTS (\$10K+)**

Newman's Own Foundation  
 Emma Sheaffer Charitable Trust  
 Roger Berlind  
 André Bishop  
 The Lecomte du Noüy Foundation  
 Kent Lawson & Carol Tambor  
 Ellen McCourt  
 Andrea & George Miller  
 Nanahya Santana & Hume Steyer  
 Jeremy Smith  
 Monica Gerard-Sharp & Ali Wambold

**PATRONS (\$5K+)**

Anonymous  
 William Morris Endeavor Entertainment  
 The Dorothy Strelsin Foundation  
 Marshall & Nina Brickman  
 Lois Chiles  
 Leslee G. Dart  
 E.L. & Helen Doctorow  
 William H. Draper III &  
 Phyllis C. Draper  
 Robert Eimicke & Roslyn Black  
 Kristin & Gary Friedman  
 Jane Gelfman  
 Edwin & Lorna Goodman  
 The Anrol Foundation  
 Mary G. Gurney  
 Sylvia G. & Benjamin F. Johnson and  
 Sarah East Johnson  
 Mark Kaplan  
 Kath Lavidge & Edward McKinley  
 Cassie Murray & William Plapinger  
 Susan Sarandon  
 Mike Nichols & Diane Sawyer  
 Lawrence Shainberg & Vivian Bower  
 George Sheanshang  
 Jeanne S. & Herbert J. Siegel

Julie & Andrew Stanton  
 Becky Tesich  
 Emily & Lily Wiest

**FRIENDS (\$1K+)**

The Shana Alexander  
 Charitable Foundation  
 Pakula Productions, Inc.  
 Robert & Betsy Barbanell  
 Agnes Martin Barley  
 Tom & Meredith Brokaw  
 Arthur H. Brooks  
 David C. Bryan  
 Beth Burnam  
 Arthur & Linda Carter  
 Michael J. Chepiga &  
 Pamela Rogers Chepiga  
 in honor of Kathy White  
 Marya Cohn  
 Al & Roma Connable  
 Blythe Danner  
 Robert L. Denton  
 Arlene Donovan  
 John & Karen Erickson  
 Mr. & Mrs. John Galen  
 Joseph F. Godfrey & Keith Halstead  
 James & Toni Goodale  
 Sarah C. Goodyear  
 Jane Whitney Gruson  
 Christopher Bumcrot & Evelyn R. Gurney  
 Lynne Halliday & B.H. Barry  
 Robert & Marilyn Harbage  
 Patrick Herold  
 Fenita Bilgoraj Heyman  
 Cindy & Alan Horn  
 Lise Jeantet  
 Emily F. Johnson  
 Marsha Berkowitz & Wayne Kabak  
 Marianne & David Kaplan  
 Jerome B. Kauff  
 Stephen & Marina P. Kaufman  
 Louise Lamphere  
 in honor of Basil Walter  
 Claire & David Lane  
 Jerry Levine & Nina Tassler  
 Paige & Nicky L'Hommedieu  
 Kate H. Marber  
 Israela Margalit  
 Marla Mayer & Chris Ahearn  
 Julian Mazor

Michael Miller  
 Robert & Evelyn Miller  
 Susan Monserud & Ric Sonder  
 Harry Moses & Randy Lehrer  
 Bernard W. Nussbaum  
 Gilbert Parker  
 Juliet & Michael Patsalos-Fox  
 David B. Pearce, M.D.  
 Mary Ann & Bruno A. Quinson  
 Ivan Reitman  
 In Memory of Harold Ramis  
 Deborah Schneider & Jim Tilley  
 Eleanor Shakin  
 Jonathan Sheffer  
 Barry Skovgaard & Marc Wolinsky  
 Bernadette Speach &

Jeffrey Schanzer  
 Andrew & Julie Stanton  
 Scott & Dhuane Stephens  
 Michael & Marjorie Stern  
 Bruce Sunstein  
 Holland Taylor  
 David & Deborah Trainer  
 Victoria G. Traube  
 Ginny & Bob Walther  
 Emmeline Wexer  
 Marguerite C. Whitney  
 Rachael Worby  
 F.A. Zunino

**List as of 2/17/16**

We apologize if you have been left off this list.

Please contact Charlie Madison at [charliem@theflea.org](mailto:charliem@theflea.org) for any corrections.

For more information on our Capital Project, please contact Carol Ostrow, (212) 226-0051 x104



# FOUNDATIONS, CORPORATIONS, GOVERNMENT & INDIVIDUAL SUPPORT

**\$50,000+**

The Poses Family Foundation  
 A.R. & Molly Gurney

**\$25,000 - \$49,999**

The National Endowment for the Arts  
 New York City Department  
 of Cultural Affairs  
 The Shubert Foundation  
 Venturous Theater Fund  
 of the Tides Foundation  
 Warburg Pincus

**\$10,000 - \$24,999**

The Janey Fund  
 The Prospect Hill Foundation  
 The Fan Fox  
 & Leslie R. Samuels Foundation  
 The Harold & Mimi Steinberg  
 Charitable Trust

**\$5,000 - \$9,999**

The Educational Foundation of America  
 Lucille Lortel Foundation  
 New York State Council on the Arts  
 The Dorothy Strelsin Foundation  
 James Cameron  
 Lois Chiles  
 Lauralee & Walter N. Howley  
 Kristina & Stephen Lang  
 Sahra Lese  
 Barbara Vogelstein

**\$2,500 - \$4,999**

Axe-Houghton Foundation  
 Barbara Bell Cumming Foundation  
 The John Golden Foundation  
 Leon Levy Foundation  
 Cassie Murray & William Plapinger  
 Miles Nordin  
 Esme Usdan

Mary & Jerome Vascellaro

**\$1,000 - \$2,499**

Dramatists Guild Fund  
 Friars Foundation  
 Mertz Gilmore Foundation  
 The Dorothy Loudon Foundation  
 South's  
 John & Gaily Beinecke  
 Virginia Benzak  
 Jackie Brody  
 Beth Burnam  
 Larry Condon  
 Bill & Phyllis Draper  
 Elizabeth Duggal Taghipour  
 Karen and Peter Jakes  
 Mark Lebwhol  
 Julian Mileta  
 Shelly & Neil Mitchell  
 Linda Carlson & Robert Santos  
 Alberta & Henry Strange  
 Aida & Charbel Tagher  
 Cynthia King Vance & Lee Vance  
 Beau Willimon

**\$500+**

The Geoffrey Gund Foundation  
 Petrarca

**FLEA MEMBERS**

**\$250 Donor**

Anonymous  
 Clay B.  
 Robert & Betsy Barbanell  
 Deborah & Bruce Berman  
 Linda Blacken  
 Rich Bornstein & Sarah Reines  
 Tracy & Spencer Brog  
 Jeffrey Cane  
 Lucy & David Carson  
 Kenneth G. Bartels & Jane Condon  
 Joanna Dean  
 Christine Doudna & Richard Grand-Jean  
 Sara & Fred Epstein  
 Alice Ericsson  
 William Farkas  
 Joe Godfrey & Keith Halstead

Marilyn Armel  
 Henry Finder & Kwame Anthony Appiah  
 Lois Conway  
 Blythe Danner  
 Robert J. & Katherine N. Del Tufo  
 Christopher Durang  
 George L. Fleming  
 Bobby & Vicki Freeman  
 Cammy Grusd & Dan Zamlong  
 Jan Guifarro  
 Evie Gurney & Chris Bumcrot  
 Bernard & Marcia Kamine  
 Marina & Stephen Kaufman  
 Gregory Long  
 Payne Middleton  
 Douglas & Nancy Ostrow  
 Marcia & William Pade  
 Betty Robbins  
 Carla Solomon & Antonio Magliocco Jr.

**List as of 2/17/2016**



We apologize if you have been left off this list.  
 Please contact Charlie Madison at  
[charliem@theflea.org](mailto:charliem@theflea.org) for any corrections.

Bruce Goodrich  
 Howard & Bonnie Graff  
 John & Diane Haney  
 C&S Int'l Insurance Brokers, Inc.  
 Harris & Randee Horowitz  
 International Creative Management, LLC  
 Dr. Daryl Isaacs  
 Irina Kashan  
 Staci Levine  
 Seth Meyer  
 Cherrie Nanninga  
 Harriet & Gregg Orley  
 John Rosenmiller  
 Marjorie Rosenthal  
 Ellen & Norman Roth  
 Laurie & Arthur Sackler  
 Kathleen E. Shannon

Caroline & Kevin Smith  
 Peter Stamos  
 Marjorie & Michael Stern  
 Gordon Stewart  
 Jonathan Weiner  
 Anita & Byron Wien  
 Rosemary Williams  
 Melissa Wohlgemuth

**\$100 Contributor**

Anonymous (7)  
 Edward Albee  
 Claudia Alcorn  
 Misty Anderson  
 Abby & Michael Auerbach  
 Ellie & Bob Berlin  
 Nadia Bernstein  
 Monty Blanchard & Leslie Tcheyan  
 Barbara & Gary Bloom  
 Rose Bonczek  
 Sarah Bond  
 Jonathan Brady  
 George Bunn  
 Linda Casper  
 Ronni Casty  
 Susan & Jeffrey Chase  
 Debra & Robert Chavez  
 Joshua & Anne Cohen  
 Ann & John Costello  
 Ellen Davis  
 Sue B. Dorn  
 Joe Dowling  
 Frank & Helga Doyle  
 Donna Epstein & Monte Peterson  
 Bruce Fagin  
 Susan Fleischer  
 Martha J. Fleischman  
 Charles Forma  
 Henry Fraimow & Jacqueline French  
 Tilo Fruth  
 Sealy & Timothy Gilles  
 Judith Ginsberg  
 Betty & Joshua Goldberg  
 Joan Goldfield  
 Carol Ostrow  
 Gordon Gould  
 Nan Graham  
 Susan Grant  
 Zach Grenier

Jennifer Haley  
 Kathleen Halvey  
 Katherine Hanson & James Fraser  
 Mary R. Hardin  
 Joe Hardy  
 Julie Harris  
 Jonathan Harrison  
 Susan Hilferty  
 Douglas Hillmer  
 Willy Holtzman  
 Gale Jacobsohn  
 Katherine Janca  
 Sarah East Johnson  
 Emily Johnson  
 Benjamin Kamine  
 Douglas Kreitzberg  
 JoAnn Kruger  
 Richard Kuczkowski  
 Rosanne Kumins  
 Ronald Laeremans  
 Susan Lagomarsino  
 Charles Linzner  
 Mark & Susan Lippitt  
 Keith Long  
 Murray Luftglass  
 Jane Macan  
 Cecil Mackinnon  
 Gaston Magrinat  
 Mike & Giselle Mahoney  
 Malikha Mallette  
 Kate H. Marber  
 Tom Marvel  
 Jeffrey Matchen  
 Jill Matichak  
 Patricia Mcelhone  
 Christopher McElroen  
 Elaine Montgomery  
 Ellen & Michael Mullen  
 Drs. Benjamin Natelson & Gudrun Lange  
 Julia Noulin Merat  
 Teri & Glenn Jampol  
 Gary Purwin  
 Christopher & Lynne Ramsey  
 Wayne A. Ransier  
 Joe Regan  
 Debbie Schrage  
 Roberta Lee Scott  
 Michael Seel  
 Eleanor Shakin

Todd Shalom  
 Peter Simon  
 Ann & Bill Smith  
 Fran Smyth  
 Matthew Smyth  
 Preston Stahly  
 Robert Stuart  
 Edward & Miranda Tinsley  
 Craig Troyer  
 Phyllis Urman-Klein  
 Lisa Van Curen  
 Kathryn Wagner  
 Sturgis Warner  
 Tobi & Scott Weinstein  
 Alan Wertheimer  
 Edward Whitney  
 Maury Wind  
 Cynthia Yang  
 Patricia Yarberry-Allen  
 Jeremy Zimmer  
 Peter Zingg

**\$50 Supporters**

Anonymous (7)  
 Marvin H. Albert  
 Karen Bernard  
 Susan Bernfield  
 Michael Borgmann  
 Gary Bradley  
 Steven Charen  
 Evelyn Chen & Johnson Tang  
 Fred Chernoff  
 John Cipoletti  
 Dr. Robert R. Cole  
 Paul Cole  
 Martin Domb  
 Drama Book Shop  
 Malcolm Duffy  
 Diane & Barry Eisenstat  
 Andrew Fink  
 MK Fischer  
 Helene Foley  
 Cly Fowkes  
 Stephen Friedman  
 Bill Gill  
 Carl Gonzalez  
 Emily Graff  
 Sarah Graff & Adam Snetman  
 John Graffeo

Jodi & Robert Harrison  
 Joanne C. Higgins  
 Paul & Joanne Howard  
 Stuart Hutchison III  
 Steven Ingerman  
 Cathy & Andy Jacobs  
 Jeffrey Jones  
 Carol W. Kelley  
 Ann Krsul  
 John Langdon  
 Allan Lefcowitz  
 Bernard & Steffi Liberman  
 Warren Liebold  
 Elaine Loeser  
 Dayna Lucas  
 Anita Mandl  
 Stephen Marchetta  
 Julie Mellby  
 Audrey E Moore  
 Karla Morse  
 Barbara & Dan O'Connell  
 Daniel & Lola O'Connell  
 Brandon J. Ortiz  
 Sam Perkins  
 Carole Pesner  
 Jody Peterson  
 Susan C. Philips  
 William Pike  
 Catherine Powell  
 Nancy Reynolds  
 Mary Schwab  
 Robert D. Sholiton  
 Jeanne & Steve Stellman  
 Alvin Taylor  
 Mary Voce  
 Kevin Walz  
 J. Marvin Watts  
 Nancy Wender  
 Leonora Wiener  
 Graham Winter  
 Rita Wolf  
 Ruth S. Zachary  
 Ellen & Allen Zerkin

**List as of 02/17/16**

We apologize if you have been left off this list.  
 Please contact Kayla Sklar at  
 kaylas@theflea.org for any corrections.

# FLEA REWARDS

Use your Flea Member Card or ticket stub to take advantage of these special offers from our downtown partners.

## **Petrarca (34 White St.)**

212-625-2800 / [petrarcatribeca.com](http://petrarcatribeca.com)

Italian Restaurant & Wine Bar

Receive a 10% discount on your bill

## **Da Mikele (275 Church St.)**

212-925-8800 / [damikele.com](http://damikele.com)

Neapolitan-Inspired Italian Restaurant

Receive a 10% discount on the bill

## **Souths (273 Church St.)**

212-219-0640 / [southsnyc.com](http://southsnyc.com)

Neighborhood Bar and Restaurant

A complimentary glass of wine with the order of an entrée

## **Billy's Bakery (75 Franklin St.)**

212-647-9958 / [billysbakerynyc.com](http://billysbakerynyc.com)

Deserts and Other Baked Goodies

Buy one cupcake & get the second 1/2 off

## **Añejo (301 Church St. at Walker)**

212-920-6270 / [anejotribeca.com](http://anejotribeca.com)

Mexican

A complimentary Plata margarita with any food purchase

## **Church Street Tavern (313 Church St.)**

212-804-7766 / [churchstreettavern.com](http://churchstreettavern.com)

Modern Manhattan Tavern

Recieve 10% off your bill

## **TriBeCa Grill (375 Greenwich St.)**

212-941-3900/[myriadrestaurantgroup.com](http://myriadrestaurantgroup.com)

American Grill

Enjoy a complimentary sommelier's choice glass of wine with dinner.

## **Nish Nush**

**(88 Reade Street, corner of Church)**

212-964-1318/[www.nishnushnyc.com](http://www.nishnushnyc.com)

Fresh, gourmet hummus, falafel, baklava and more – 10% off with your membership card!

## **Sun In Bloom (165 Church St.)**

212-791-6700/[suninbloom.wordpress.com](http://suninbloom.wordpress.com)

Gluten-Free, Vegan & Raw Food Kitchen in Tribeca & Brooklyn- 10% off with your membership card!

**CHECK [THEFLEA.ORG](http://THEFLEA.ORG) OR CALL  
212-226-0051 x101 FOR  
THE LATEST UPDATES & DEALS.**



# THE FLEA THEATER MEMBERS PROGRAM

Get Special Attention. Support The Flea. Be a Member.

Our theater is tiny and we sell out...fast. Members get guaranteed seats plus exclusive discounts, invites, drinks & inside info! All levels of membership are 100% tax-deductible.

Become a Member

## \$25 Member

No booking or convenience fees  
VIP ticket processing

## \$50+ Supporter

*All of the above, plus:*  
Exclusive discounts & deals to partner businesses  
First to know of exciting post or pre-show Flea events  
Special thanks in Flea programs

## \$100+ Contributor

*All of the above, plus:*  
Reserved seating for you and your guests  
Exchange tickets up to 24 hours in advance  
One complimentary drink at our bar before every show

## \$250+ Donor

*All of the above, plus:*  
Invitations to readings and special Flea events  
One complimentary drink at our bar for your entire party

## \$500+ Partner

*All of the above, plus:*  
Dinner reservations at select Flea Partner restaurants  
Unlimited complimentary drinks

## \$1,000+ Iconoclast

*All of the above plus:*  
Invitation to select Opening Night performances, select Flea Fêtes, and cast parties  
Access to Broadway house seats (purchase necessary)

## \$2,500+ Vanguard, Flea I.P's

**Interested? Email [carolo@theflea.org](mailto:carolo@theflea.org) for more information!**

**CALL 212.226.0051 x101, or MAIL/FAX the form below to join!**

I WANT TO JOIN THE FLEA! (Please check membership level below)

\_\_\_\_\_ \$25 Member

\_\_\_\_\_ \$50 Supporter

\_\_\_\_\_ \$100 Contributor

\_\_\_\_\_ \$250 Donor

\_\_\_\_\_ \$500 Partner

\_\_\_\_\_ \$1,000 Iconoclast

NAME (as should be listed) \_\_\_\_\_

ADDRESS \_\_\_\_\_

CITY, STATE, ZIP \_\_\_\_\_

EMAIL \_\_\_\_\_ PHONE \_\_\_\_\_

CREDIT CARD # \_\_\_\_\_ EXP. \_\_\_\_\_ SECURITY CODE \_\_\_\_\_

Mail this form with a check to THE FLEA MEMBERS PROGRAM, 41 White Street, New York, NY 10013 or fax this form with your credit card information to (212) 965-1808. Questions or concerns? Call us at 212-226-0051 x107.